



MINISTRY OF HEALTH



NATIONAL CENTER
OF PUBLIC HEALTH AND ANALYSES

**PUBLIC HEALTH
STATISTICS**
Annual Bulgaria
2023

Sofia, 2023

PUBLIC HEALTH STATISTICS, Bulgaria 2023, Annual

ISSN 1310–2931

Published by *National center of public health and analyses*
Sofia, 2023

Printed by *National center of public health and analyses*
Circulatuion 50

CONTENTS

I. POPULATION AND VITAL STATISTICS

1. Population on 31.XII.	7
2. Population by age on 31.XII.2022	8
3. Age structure of the population	9
4. Live births, deaths and natural growth	10
5. Births and abortions	12
6. Age specific fertility rates.....	12
7. Low birth weight newborns in medical establishments for 2022	13
8. Infant mortality.....	14
9. Perinatal, neonatal and postneonatal infant mortality	14
10. Stillbirths and infant deaths under 1 year.....	17
11. Mortality by age groups.....	18
12. Life expectancy in the Republic of Bulgaria	18

II. MORBIDITY AND MORTALITY BY CAUSES

1. Registered cases of certain infectious diseases subject to obligatory reporting.....	19
2. Diseases of active tuberculosis	20
3. Diseases of malignant neoplasms – new cases.....	21
4. New cases of malignant neoplasms by localization	23
5. Hospitalized patients (discharged and deceased) in hospitals by age.....	24
6. Hospitalized patients (discharged and deceased) in hospitals by classes of ICD-10 in 2022	25
7. Hospitalized patients (discharged and deceased) in hospitals 0-17 years of age by classes of ICD-10 in 2022	26
8. Hospitalized patients (discharged and deceased) in hospitals 18-64 years of age by classes of ICD-10 in 2022	27
9. Hospitalized patients (discharged and deceased) in hospitals over 65 years of age by classes of ICD-10 in 2022	28
10. Primary disability of persons over 16 years of age.....	29
11. Primary disability of persons under 16 years of age	30
12. Primary disability of persons over 16 years of age by class of diseases in 2022	31

13. Primary disability of persons under 16 years of age by class of diseases in 2022	32
14. Mortality by causes in 2022	33
15. Premature mortality in 2022	35
16. Premature mortality in 2022 – male	37
17. Premature mortality in 2022 – female	39
III. HEALTH FACILITIES	
1. Health facilities and hospital beds on 31.XII.2022	41
2. Beds in hospitals on 31.XII.2022 by type	43
3. Beds in hospitals and other healthcare establishments on 31.XII.2022 by type	46
IV. MEDICAL PERSONNEL	
1. Medical personnel	47
2. Physicians by speciality	49
V. ACTIVITIES OF THE HEALTH FACILITIES	
1. Activities of the inpatient wards of the hospital health care facilities in 2022	50
2. Utilization, turnover and average length of stay in health care facilities in 2022 by type of beds	52
3. Women in childbirth served at inpatient healthcare facilities	55
4. Abortions performed in health facilities in 2022 by age group and type of abortion	56
5. Abortions performed in health facilities	57
6. Persons served by the centers for urgent medical care and urgent wards	57
7. Number and type of surgeries of patients, discharged from hospitals in 2022	58
8. Number and type of surgeries of patients, discharged from hospitals in 2022 by type of healthcare facility	59
VI. ECONOMIC INDICATORS OF THE HEALTH FACILITIES FOR 2022	61

VII. REVIEW BY REGIONS

1. Population on 31.XII.2022	62
2. Live births in 2022	64
3. Deaths in 2022	65
4. Natural growth of population in 2022	66
5. Infant mortality in 2022	67
6. Registered cases of certain infectious diseases subject to obligatory reporting in 2022	68
7. Diseases of active tuberculosis in 2022	70
8. Diseases of malignant neoplasms in 2022 – new cases.....	71
9. Hospitalized patients (discharged and deceased) in hospitals in 2022	72
10. Hospitalized patients (discharged and deceased) in hospitals by residence in 2022	73
11. Beds in hospitals on 31.XII.2022	74
12. Beds in hospitals and other healthcare establishments on 31.XII.2022 by type	75
13. Medical personnel in health facilities on 31.XII.2022	77
14. Age structure of physicians (individuals) with basic employment contract as of 31.XII.2022	79
15. Age structure of healthcare professionals (individuals) with basic employment contract as of 31.XII.2022	80
16. Age structure of nurses (individuals) with basic employment contract as of 31.XII.2022	81
17. Persons served by the centers for urgent medical care and urgent wards in 2022	82
18. Childbirth care at inpatient healthcare facilities during 2022	83
19. Surgical patients, discharged from hospitals in 2022	84

VIII. INTERNATIONAL REVIEW

1. Birth rate, death rate and natural growth	85
2. Infant mortality rate.....	86
3. Medical personnel and hospital beds	87

Main Health-demographic Indicators for 2022

	Population on 31.12.2022 r.	6 447 710
Age structure of the population:	0-17 years of age	17.1%
	18-64 years of age	59.4%
	over 65 years of age	23.5%
	Crude birth rate	8.8‰
	Crude death rate	18.4‰
	Infant mortality	4.8‰
	Perinatal mortality	7.3‰
	Neonatal mortality	2.4‰
	Post neonatal mortality	2.4‰
Premature mortality:	total	19.2%
	male	25.5%
	female	12.5%
Life expectancy at birth for 2020-2022 years (in years)		71.90
	male	68.34
	female	75.81
	New cases and relapses of active tuberculosis	11.9‰‰
	New cases of malignant neoplasms	405.8‰‰
	Hospitalized patient	33 994.0‰‰
	0-17 years of age	21 875.8‰‰
	18-64 years of age	28 084.8‰‰
	over 65 years of age	57 762.7‰‰
	Hospitals (number)	319
	Beds in hospitals (number)	52 462
	Physicians (number)	29 599
	Auxiliary medical personnel (number)	44 493
	The highest proportion of doctors in the age group 55-64 years	33.8%
	The highest proportion of nurses in the age group 45-54 years	33.0%
	Persons served in need of urgent medical care	2 399 805
	Surgeries of patients discharged from hospitals	615 269

I. POPULATION AND VITAL STATISTICS

1. Population on 31.XII.¹⁾

<i>Year</i>	<i>Total</i>	<i>Male</i>	<i>Female</i>	<i>Urban</i>	<i>Rural</i>
<i>Number (thous.)</i>					
1970	8 514.9	4 256.6	4 258.3	4 509.8	4 005.1
1980	8 876.6	4 421.7	4 454.9	5 546.0	3 330.6
1990	8 669.3	4 270.0	4 399.3	5 817.9	2 851.4
2000	8 149.5	3 967.4	4 182.1	5 576.9	2 572.6
2005	7 718.8	3 743.4	3 975.4	5 416.6	2 302.2
2010	7 504.9	3 629.8	3 875.1	5 375.1	2 129.8
2015	7 153.8	3 477.2	3 676.6	5 227.2	1 926.6
2019	6 951.5	3 369.6	3 581.8	5 125.4	1 826.1
2020	6 916.5	3 349.7	3 566.8	5 043.2	1 873.4
2021	6 838.9	3 311.3	3 527.6	5 000.5	1 838.4
2022	6 447.7	3 099.5	3 348.2	4 746.7	1 701.0
<i>Percentage (%)</i>					
1970	100.0	50.0	50.0	53.0	47.0
1980	100.0	49.8	50.2	62.5	37.5
1990	100.0	49.3	50.7	67.1	32.9
2000	100.0	48.7	51.3	68.4	31.6
2005	100.0	48.5	51.5	70.2	29.8
2010	100.0	48.4	51.6	71.6	28.4
2015	100.0	48.6	51.4	73.1	26.9
2019	100.0	48.5	51.5	73.7	26.3
2020	100.0	48.4	51.6	72.9	27.1
2021	100.0	48.4	51.6	73.1	26.9
2022	100.0	48.1	51.9	73.6	26.4

¹⁾ NSI data

2. Population by Age on 31.XII.2022¹⁾

(number)

<i>Age</i>	<i>Total</i>	<i>Male</i>	<i>Female</i>	<i>Urban</i>	<i>Rural</i>
Total	6 447 710	3 099 503	3 348 207	4 746 710	1 701 000
0	56 526	28 880	27 646	42 142	14 384
1–4	229 534	117 908	111 626	172 347	57 187
5–9	304 395	156 208	148 187	228 754	75 641
10–14	322 964	165 924	157 040	241 363	81 601
15–19	301 621	155 885	145 736	222 914	78 707
20–24	272 140	139 483	132 657	206 531	65 609
25–29	280 313	144 284	136 029	212 705	67 608
30–34	382 108	196 834	185 274	295 372	86 736
35–39	429 760	221 886	207 874	336 153	93 607
40–44	458 811	237 094	221 717	356 606	102 205
45–49	508 887	259 762	249 125	392 829	116 058
50–54	486 516	245 946	240 570	360 986	125 530
55–59	439 672	216 155	223 517	316 634	123 038
60–64	459 080	215 903	243 177	326 642	132 438
65–69	454 324	200 541	253 783	318 417	135 907
70–74	423 021	173 091	249 930	291 353	131 668
75–79	309 750	116 283	193 467	207 370	102 380
80–84	187 902	64 318	123 584	122 573	65 329
85–89	102 407	32 102	70 305	68 545	33 862
90–94	32 684	9 631	23 053	22 698	9 986
95–99	4 942	1 304	3 638	3 524	1 418
100+	353	81	272	252	101

¹⁾ NSI data

3. Age Structure of the Population

(%)

Year	Total	Age groups		
		0–17	18–64	65+
Total				
1995	100.0	22.0	62.8	15.2
2000	100.0	19.5	64.1	16.4
2010	100.0	16.7	65.6	17.7
2015	100.0	16.6	63.0	20.4
2019	100.0	17.1	61.3	21.6
2020	100.0	17.2	61.0	21.8
2021	100.0	17.4	60.9	21.7
2022	100.0	17.1	59.4	23.5
Urban				
1995	100.0	22.9	65.6	11.5
2000	100.0	20.0	67.7	12.3
2010	100.0	16.9	68.5	14.6
2015	100.0	16.8	65.0	18.2
2019	100.0	17.4	62.8	19.8
2020	100.0	17.7	62.4	19.9
2021	100.0	17.9	62.2	19.9
2022	100.0	17.3	60.9	21.8
Rural				
1995	100.0	20.1	57.0	22.9
2000	100.0	18.6	56.3	25.1
2010	100.0	16.1	58.2	25.7
2015	100.0	16.0	57.4	26.6
2019	100.0	16.2	56.9	26.9
2020	100.0	15.9	57.5	26.6
2021	100.0	16.1	57.5	26.4
2022	100.0	16.3	55.4	28.3

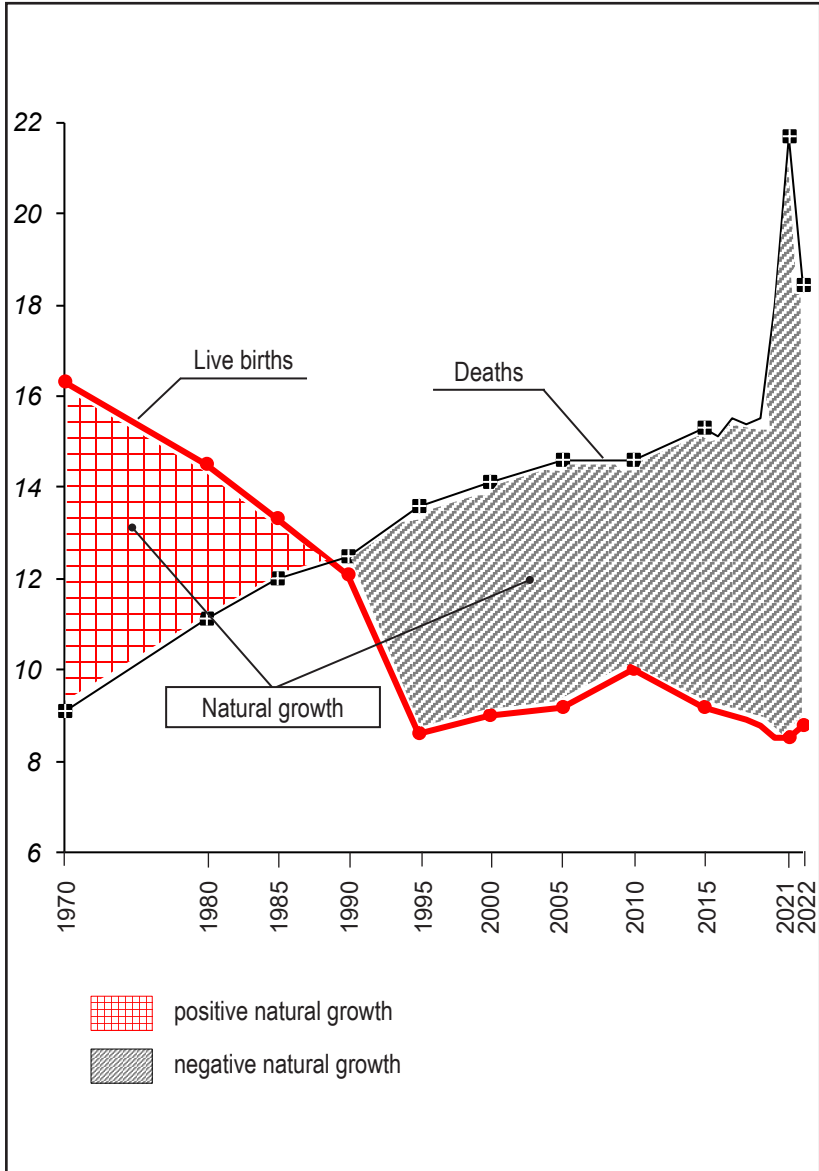
4. Live Births, Deaths and Natural Growth¹⁾

Year	Live births	Deaths	Natural growth	Live births	Deaths	Natural growth
	Number			Per 1000 population		
Total						
1980	128 190	97 950	30 240	14.5	11.1	3.4
1990	105 180	108 608	-3 428	12.1	12.5	-0.4
2000	73 679	115 087	-41 408	9.0	14.1	-5.1
2010	75 513	110 165	-34 652	10.0	14.6	-4.6
2015	65 950	110 117	-44 167	9.2	15.3	-6.2
2019	61 538	108 083	-46 545	8.8	15.5	-6.7
2020	59 086	124 735	-65 649	8.5	18.0	-9.5
2021	58 678	148 995	-90 317	8.5	21.7	-13.2
2022	56 596	118 814	-62 218	8.8	18.4	-9.6
Urban						
1980	86 664	45 153	41 511	15.7	8.2	7.5
1990	73 940	55 225	18 715	12.6	9.4	3.2
2000	52 789	64 184	-11 395	9.5	11.5	-2.0
2010	57 077	65 759	-8 682	10.6	12.2	-1.6
2015	49 486	67 749	-18 263	9.4	12.9	-3.5
2019	45 991	68 551	-22 560	8.9	13.3	-4.4
2020	43 829	79 952	-36 123	8.6	15.7	-7.1
2021	43 692	96 424	-52 732	8.7	19.2	-10.5
2022	41 986	76 261	-34 275	8.8	16.0	-7.2
Rural						
1980	41 526	52 797	-11 271	12.4	15.7	-3.3
1990	31 240	53 383	-22 143	10.9	18.6	-7.7
2000	20 890	50 903	-30 013	8.1	19.6	-11.5
2010	18 436	44 406	-25 970	8.6	20.7	-12.1
2015	16 464	42 368	-25 904	8.5	22.0	-13.4
2019	15 547	39 532	-23 985	8.5	21.6	-13.1
2020	15 257	44 783	-29 526	8.2	24.2	-16.0
2021	14 986	52 571	-37 585	8.1	28.3	-20.2
2022	14 610	42 553	-27 943	8.5	24.9	-16.4

¹⁾ NSI data

Live Births, Deaths and Natural Growth

(per 1000 population)



5. Births and Abortions

Year	Births	Abortions	Births	Abortions
	Number		Per 1000 women at 15–49	
1980	129 176	156 056	60.4	72.9
1990	105 821	144 644	49.2	67.2
2000	74 234	61 378	37.0	30.6
2010	76 105	31 548	42.9	17.8
2015	66 370	27 782	42.3	17.7
2019	61 882	21 864	41.9	14.8
2020	59 440	19 328	40.8	13.3
2021	59 069	19 353	41.0	13.4
2022	56 917	18 972	44.4	14.8

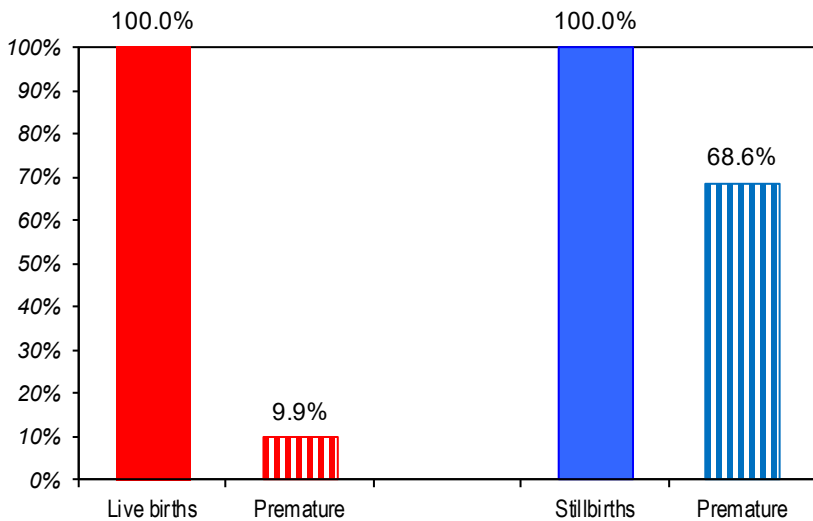
6. Age Specific Fertility Rates

(per 1000 women)

Age	1990	2000	2010	2015	2019	2020	2021	2022
Total	48.9	36.7	42.6	42.0	41.6	40.5	40.7	44.1
to 19	68.3	47.1	43.1	41.3	40.9	39.3	38.2	40.4
20–24	158.4	89.7	73.1	69.7	69.3	67.6	67.3	74.9
25–29	78.3	72.9	86.8	88.1	91.3	89.8	91.7	104.8
30–34	28.8	32.3	65.1	69.7	72.8	71.2	73.6	83.3
35–39	9.4	9.5	26.1	30.6	34.0	34.0	34.8	39.7
40–44	1.8	1.9	4.1	5.9	7.7	7.8	7.8	8.8
over 45	0.1	0.1	0.3	0.7	0.9	1.2	1.2	1.6

7. Low birth weight newborns in medical establishments for 2022

	<i>Live births</i>	<i>Stillbirths</i>
Births	53 149	315
incl. weight up to:		
2499-2000 grams	3 593	49
1999-1500 grams	1 017	64
1499-1000 grams	422	63
999-700 grams	187	31
под 700 grams	39	9



8. Infant Mortality¹⁾

<i>Year</i>	<i>Total</i>	<i>Urban</i>	<i>Rural</i>
Number			
1980	2 594	1 560	1 034
1990	1 554	1 020	534
2000	981	657	324
2010	708	461	247
2015	434	255	179
2019	342	218	124
2020	301	196	105
2021	326	195	131
2022	274	166	108
Per 1000 live births			
1980	20.2	18.0	24.9
1990	14.8	13.8	17.1
2000	13.3	12.4	15.5
2010	9.4	8.1	13.4
2015	6.6	5.2	10.9
2019	5.6	4.7	8.0
2020	5.1	4.5	6.9
2021	5.6	4.5	8.7
2022	4.8	4.0	7.4

9. Perinatal, Neonatal and Postneonatal Infant Mortality

(per 1000 live births)

	<i>1990</i>	<i>2000</i>	<i>2010</i>	<i>2015</i>	<i>2019</i>	<i>2020</i>	<i>2021</i>	<i>2022</i>
Perinatal ²⁾	11.1	12.2	11.4	9.1	7.8	7.9	8.8	7.3
Neonatal	7.7	7.5	5.2	4.0	3.1	2.8	3.1	2.4
Postneonatal ³⁾	7.1	5.9	4.2	2.6	2.5	2.3	2.4	2.4

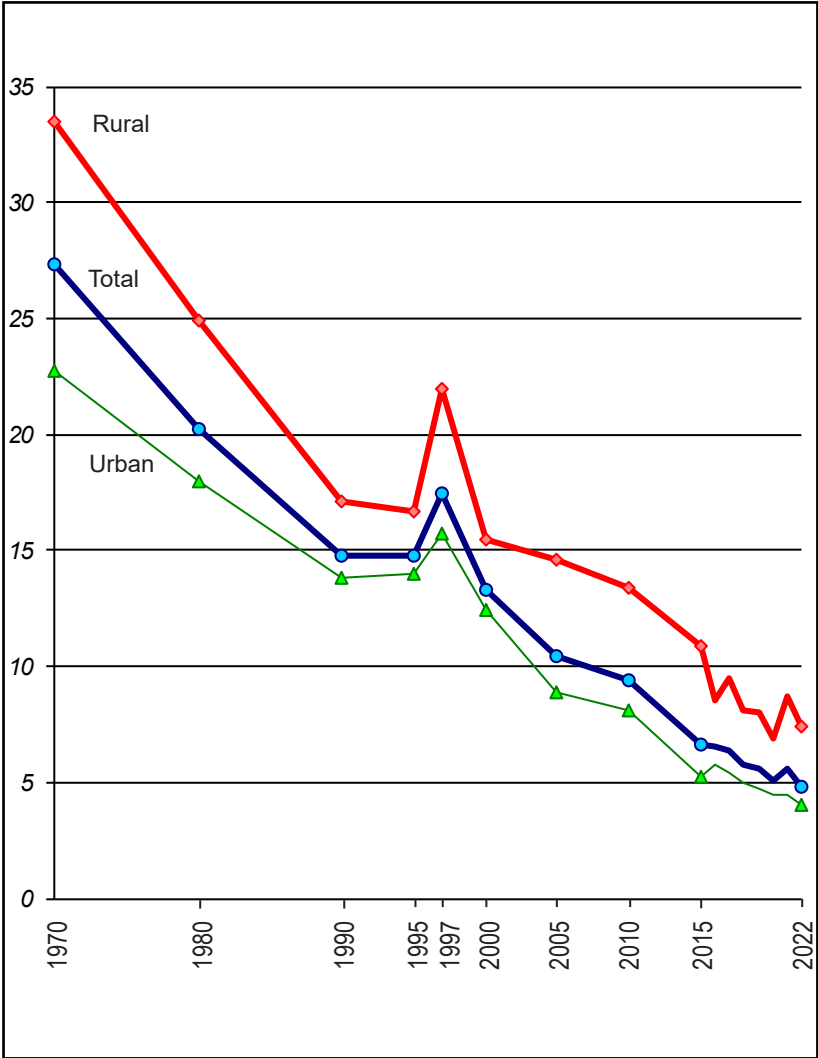
¹⁾ NSI data

²⁾ Per 1000 births.

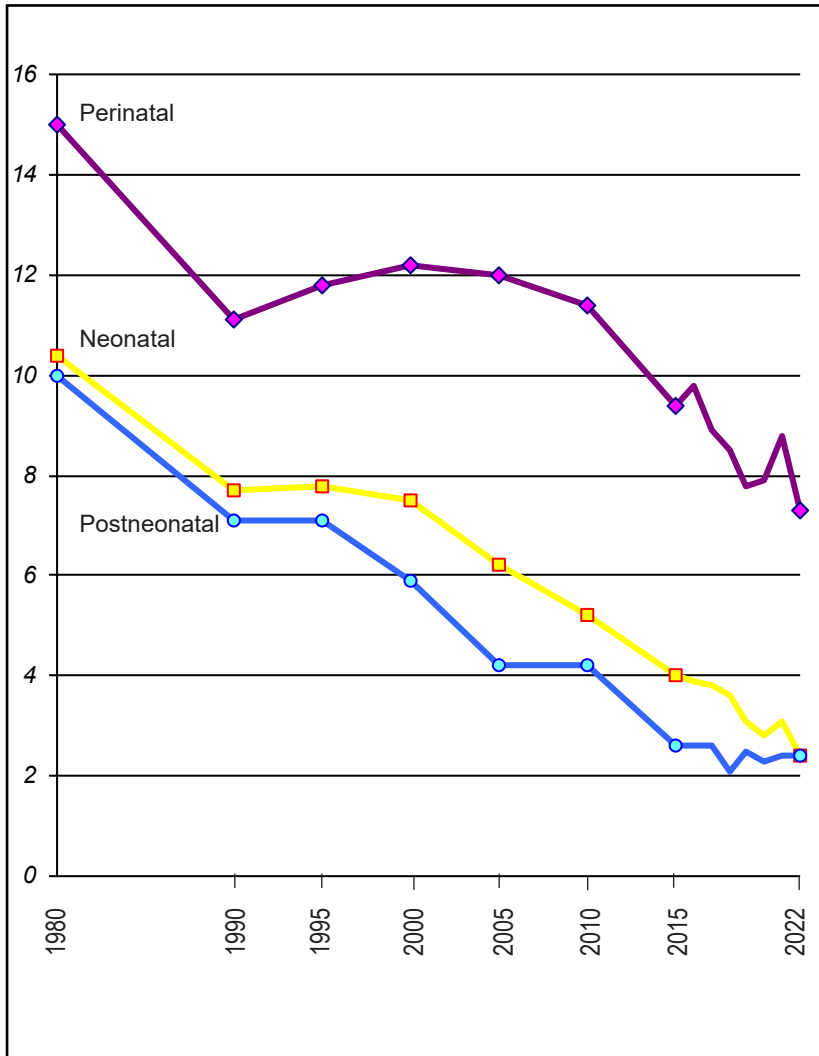
³⁾ Per 1000 live births, excl. deaths before 28th day.

Infant Mortality

(per 1000 live births)



Perinatal, Neonatal and Postneonatal Infant Mortality



10. Stillbirths and Infant Deaths Under 1 Year¹⁾

(number)

Year	Stillbirths	Infant deaths under 1 year			
		Total	Incl. :		
			0–6 days	7–27 days	28+ days
Total					
1980	986	2 594	957	372	1 265
1990	641	1 554	533	278	743
2000	555	981	348	201	432
2010	592	708	274	120	314
2015	420	434	183	81	170
2019	344	342	138	53	151
2020	354	301	115	53	133
2021	391	326	129	54	143
2022	321	274	97	40	137
Urban					
1980	606	1 560	640	245	675
1990	449	1 020	357	208	455
2000	365	657	237	141	279
2010	409	461	183	80	198
2015	284	255	105	51	99
2019	243	218	87	37	94
2020	231	196	77	39	80
2021	274	195	79	36	80
2022	210	166	58	28	80
Rural					
1980	380	1 034	317	127	590
1990	192	534	176	70	288
2000	190	324	111	60	153
2010	183	247	91	40	116
2015	136	179	78	30	71
2019	101	124	51	16	57
2020	123	105	38	14	53
2021	117	131	50	18	63
2022	111	108	39	12	57

¹⁾ NSI data

11. Mortality by Age Groups

(per 1000 population of the same age group)

Year	Total	Age groups								
		under 1 year ¹⁾	1-9	10-19	20-29	30-39	40-49	50-59	60-69	70+
1980	11.1	20.2	0.7	0.6	1.0	1.6	3.6	9.1	24.3	88.1
1990	12.5	14.8	0.6	0.6	1.1	1.8	4.3	10.0	23.5	93.4
2000	14.1	13.3	0.5	0.4	0.8	1.7	4.3	10.1	23.8	84.5
2010	14.6	9.4	0.3	0.4	0.7	1.3	3.7	9.4	20.1	80.2
2015	15.3	6.6	0.2	0.3	0.7	1.3	3.4	9.2	19.9	78.0
2019	15.5	5.6	0.2	0.3	0.7	1.3	3.4	8.8	20.1	72.6
2020	18.0	5.1	0.2	0.3	0.6	1.3	3.9	10.4	23.8	82.5
2021	21.7	5.6	0.2	0.3	0.9	1.6	4.5	12.3	29.0	98.9
2022	18.4	4.8	0.2	0.3	0.7	1.4	3.7	9.5	21.8	79.4

¹⁾ Per 1000 live births

12. Life Expectancy in the Republic of Bulgaria¹⁾

(in years)

Periods	Total	Male	Female
1935-1939	51.75	50.98	52.56
1974-1976	71.31	68.68	73.91
1989-1991	71.22	68.02	74.66
2000-2002	71.87	68.54	75.37
2005-2007	72.70	69.20	76.30
2010-2012	74.02	70.62	77.55
2015-2017	74.76	71.26	78.40
2016-2018	74.83	71.37	78.39
2018-2020	74.64	71.11	78.22
2019-2021	73.60	70.05	77.40
2020-2022	71.91	68.34	75.81

¹⁾ NSI data

II. MORBIDITY AND MORTALITY BY CAUSES

1. Registered Cases of Certain Infectious Diseases Subject to Obligatory Reporting

(per 100 000 population)

Cases	1980	1990	2000	2010	2020	2021	2022
Diphtheria	0.0	–	–	–	–	–	–
Scarlet fever	145.6	85.7	64.6	34.3	14.6	2.7	16.5
Measles	121.5	1.7	0.6	292.1	3.9	–	0.0
Pertussis	1.7	0.3	1.3	0.7	0.4	0.0	0.3
Rubeolla	779.1	147.3	348.2	0.5	–	–	–
Varicella	537.2	418.6	285.8	261.8	176.9	94.7	411.3
Mumps	73.6	1.5	28.8	4.2	0.2	0.2	0.2
Meningococcal meningitis and sepsis	1.2	0.9	1.1	0.2	0.1	0.0	0.0
Poliomyelitis	–	–	–	–	–	–	–
Q fever	0.0	0.4	1.8	0.2	1.5	0.5	0.2
Crimean-Congo haemorrhagic fever	0.1	0.1	0.1	0.1	0.0	–	0.0
Lyme disease	–	–	3.6	7.9	2.3	0.7	1.3
Malaria ¹⁾	1.4	0.5	0.2	0.1	0.1	0.1	0.1
Typhoid fever	0.0	0.0	–	0.0	–	0.0	0.0
Shigellosis	96.9	61.9	19.8	7.9	0.7	0.4	0.8
Viral hepatitis	110.8	274.2	104.8	39.9	24.0	13.9	9.8
Anthrax	0.1	0.1	0.2	0.0	–	0.0	–
Leptospirosis	0.2	0.3	0.4	0.1	0.0	0.1	0.1
Tetanus	0.2	0.1	0.0	0.0	0.0	0.0	–
Bacterial meningitis and meningoen­cephalitis	•	•	•	1.9	0.6	0.3	0.8
Viral meningitis and meningoen­cephalitis	•	•	•	3.2	1.0	0.6	0.8

¹⁾ All registered cases are imported.

2. Diseases of Active Tuberculosis

(per 100000 population)

<i>Form of disease</i>	<i>New cases and relapses¹⁾</i>							
	<i>1980</i>	<i>1990</i>	<i>2000</i>	<i>2010</i>	<i>2015</i>	<i>2020</i>	<i>2021</i>	<i>2022</i>
Total	37.0	25.9	41.0	30.3	21.9	13.0	9.9	11.9
Tuberculosis of the respiratory system	25.6	19.9	35.6	26.6	19.9	11.8	9.0	10.8
Tuberculosis of the bones and joints	2.2	1.0	1.0	0.5	0.2	0.1	0.1	0.2
Tuberculosis of the nervous system ²⁾	0.1	0.1	0.1	0.1	0.1	0.1	0.1	0.0
Other forms of tuberculosis	9.1	4.9	4.3	3.1	1.7	1.0	0.7	0.9

¹⁾ Until 2015 – only new cases

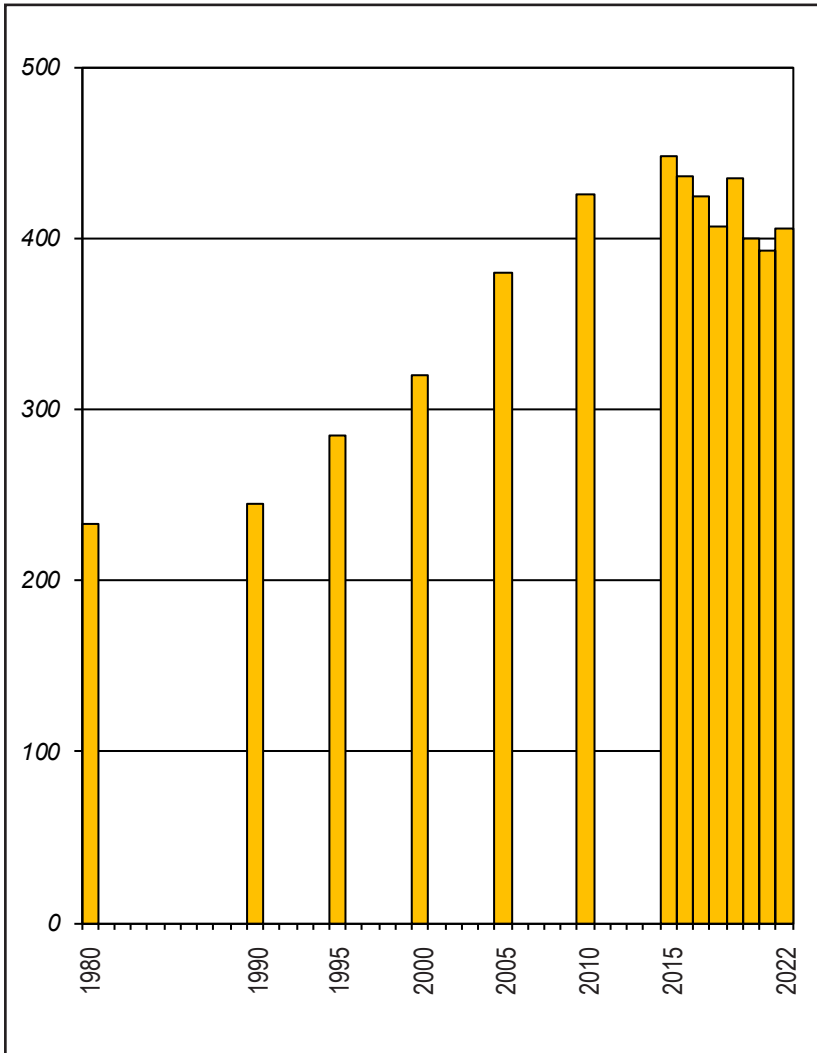
²⁾ Until 2004 – Meningitis and CNS tuberculosis (ICD-9)

3. Diseases of Malignant Neoplasms – New Cases

<i>Year</i>	Number	Per 100 000 population
1980	20 620	232.7
1990	22 038	252.8
1995	23 966	285.1
2000	26 156	320.1
2005	29 354	379.3
2010	32 067	425.6
2015	32 097	447.2
2016	31 041	435.5
2017	30 057	424.8
2018	28 573	406.7
2019	30 338	434.9
2020	27 687	399.3
2021	26 973	392.2
2022	26 235	405.8

New Cases of Malignant Neoplasms

(per 100 000 population)



4. New Cases of Malignant Neoplasms by Localization

<i>Localization ICD-10</i>	2021		2022	
	<i>Number</i>	<i>Per 100 000 population</i>	<i>Number</i>	<i>Per 100 000 population</i>
Total	26 973	392.2	26 235	405.8
Lips, oral cavity and pharynx	723	10.5	691	10.7
Incl. lips	118	1.7	99	1.5
Digestive organs	6 307	91.7	5 833	90.2
Incl. stomach	1 021	14.8	886	13.7
colon	2 148	31.2	2 023	31.3
rectosigmoid junction, rectum, anus and anal canal	1 527	22.2	1 492	23.1
Respiratory and intrathoracic organs	3 028	44.0	2 678	41.4
Incl. trachea, bronchus and lung	2 527	36.7	2 233	34.5
Bone and articular cartilage	38	0.6	34	0.5
Melanoma and other malignant neoplasms of skin	3 918	57.0	4 376	67.7
Mesothelial and soft tissue	252	3.7	233	3.6
Malignant neoplasm of breast	3 164	46.0	3 139	48.6
Incl. female breast	3 094	87.2 ¹⁾	3 093	92.2 ¹⁾
Female genital organs	2 598	73.2 ¹⁾	2 460	73.3 ¹⁾
Incl. cervix uteri	797	22.5 ¹⁾	750	22.3 ¹⁾
corpus uteri	1 090	30.7 ¹⁾	1 083	32.3 ¹⁾
ovary	558	15.7 ¹⁾	497	14.8 ¹⁾
Male genital organs	2 342	70.3 ²⁾	2 531	81.4 ²⁾
Incl. prostate	2 137	64.2 ²⁾	2 357	75.8 ²⁾
Urinary tract	2 192	31.9	2 119	32.8
Incl. bladder	1 498	21.8	1 433	22.2
Eye, brain and other parts of central nervous system	453	6.6	362	5.6
Thyroid and other endocrine glands	270	3.9	266	4.1
Ill-defined, secondary and unspecified sites	939	13.7	888	13.7
Lymphoid, haematopoietic and related tissue	749	10.9	625	9.7
Independent (primary) multiple sites	–	–	–	–

¹⁾ Per 100 000 females

²⁾ Per 100 000 males

5. Hospitalized Patients (discharged and deceased) in Hospitals by Age¹⁾

Year	Age group				
	Total	0-17	18+	incl.:	
				18-64	65+
Number					
2005	1 614 313	308 107	1 306 206	880 895	425 311
2010	1 917 199	328 306	1 588 893	1 010 719	578 174
2015	2 302 891	300 574	2 002 317	1 199 652	802 665
2017	2 331 264	290 231	2 041 033	1 185 167	855 866
2018	2 401 759	287 069	2 114 690	1 206 822	907 868
2019	2 412 523	287 540	2 124 983	1 198 247	926 736
2020	1 963 826	216 902	1 746 924	1 014 837	732 087
2021	2 013 020	216 641	1 796 379	1 030 485	765 894
2022	2 197 743	240 231	1 957 512	1 081 242	876 270
Per 100 000 population					
2005	20 857.0	22 576.3	20 489.0	17 459.0	31 986.7
2010	25 446.3	26 179.2	25 300.0	20 412.0	43 516.5
2015	32 082.7	25 342.4	33 416.8	26 418.9	55 315.8
2017	32 946.3	24 315.6	34 697.6	26 903.0	57 945.8
2018	34 188.6	24 098.2	36 249.0	27 766.8	61 032.6
2019	34 584.4	24 168.9	36 726.0	27 947.8	61 840.0
2020	28 321.6	18 225.3	30 413.5	23 935.8	48 673.8
2021	29 268.6	18 210.1	31 581.5	24 564.9	51 295.1
2022	33 994.0	21 875.8	36 473.5	28 084.8	57 762.7

¹⁾ Incl. healthy live births.

6. Hospitalized Patients (discharged and deceased) in Hospitals by Classes of ICD-10 in 2022

ICD-10	Classes	Number	Per 100000 population	Struc- ture (%)
	Total	2 197 743	33 994.0	100.0
	I.Certain infectious and parasitic diseases	22 613	349.8	1.0
	II.Neoplasms	189 495	2 931.1	8.6
	III.Diseases of the blood and blood-forming organs and certain disorders involving the immune mechanism	19 873	307.4	0.9
	IV.Endocrine, nutritional and metabolic diseases	63 228	978.0	2.9
	V.Mental and behavioural disorders	32 387	501.0	1.5
	VI.Diseases of the nervous system	55 330	855.8	2.5
	VII.Diseases of the eye and adnexa	73 114	1 130.9	3.3
	VIII.Diseases of the ear and mastoid process	30 964	478.9	1.4
	IX.Diseases of the circulatory system	264 681	4 094.0	12.1
	X.Diseases of the respiratory system	158 932	2 458.3	7.2
	XI.Diseases of the digestive system	204 811	3 168.0	9.3
	XII.Diseases of the skin and subcutaneous tissue	54 471	842.5	2.5
	XIII.Diseases of the musculoskeletal system and connective tissue	120 395	1 862.2	5.5
	XIV.Diseases of the genitourinary system	137 722	2 130.2	6.3
	XV.Pregnancy, childbirth and the puerperium	106 329	1 644.7	4.8
	XVI.Certain conditions originating in the perinatal period	19 201	297.0	0.9
	XVII.Congenital malformations, deformations and chromosomal abnormalities	7 523	116.4	0.3
	XVIII.Symptoms, signs and abnormal clinical and laboratory findings, not elsewhere classified	34 732	537.2	1.6
	XIX.Injury, poisoning and certain other conse- quences of external causes	134 164	2 075.2	6.1
	XXI.Factors influencing health status and contact with health services ¹⁾	405 835	6 277.3	18.5
	XXII.Codes for special purposes	61 943	958.1	2.8

¹⁾ Incl. 39 959 healthy live births.

7. Hospitalized Patients (discharged and deceased) in Hospitals 0-17 Years of Age by Classes of ICD-10 in 2022

ICD-10	Classes	Number	Per 100000 population	Struc- ture (%)
	Total	240 231	21 875.8	100.0
	I. Certain infectious and parasitic diseases	6 490	591.0	2.7
	II. Neoplasms	3 191	290.6	1.3
	III. Diseases of the blood and blood-forming organs and certain disorders involving the immune mechanism	2 184	198.9	0.9
	IV. Endocrine, nutritional and metabolic diseases	4 105	373.8	1.7
	V. Mental and behavioural disorders	858	78.1	0.4
	VI. Diseases of the nervous system	3 236	294.7	1.3
	VII. Diseases of the eye and adnexa	2 527	230.1	1.1
	VIII. Diseases of the ear and mastoid process	3 826	348.4	1.6
	IX. Diseases of the circulatory system	1 374	125.1	0.6
	X. Diseases of the respiratory system	71 481	6 509.2	29.8
	XI. Diseases of the digestive system	11 617	1 057.9	4.8
	XII. Diseases of the skin and subcutaneous tissue	4 253	387.3	1.8
	XIII. Diseases of the musculoskeletal system and connective tissue	2 186	199.1	0.9
	XIV. Diseases of the genitourinary system	8 829	804.0	3.7
	XV. Pregnancy, childbirth and the puerperium	6 597	600.7	2.7
	XVI. Certain conditions originating in the perinatal period	19 201	1 748.5	8.0
	XVII. Congenital malformations, deformations and chromosomal abnormalities	6 109	556.3	2.5
	XVIII. Symptoms, signs and abnormal clinical and laboratory findings, not elsewhere classified	11 528	1 049.7	4.8
	XIX. Injury, poisoning and certain other consequences of external causes	19 432	1 769.5	8.1
	XXI. Factors influencing health status and contact with health services ¹⁾	47 398	4 316.1	19.7
	XXII. Codes for special purposes	3 809	346.8	1.6

¹⁾ Incl. 39 959 healthy live births.

8. Hospitalized Patients (discharged and deceased) in Hospitals 18-64 Years of Age by Classes of ICD-10 in 2022

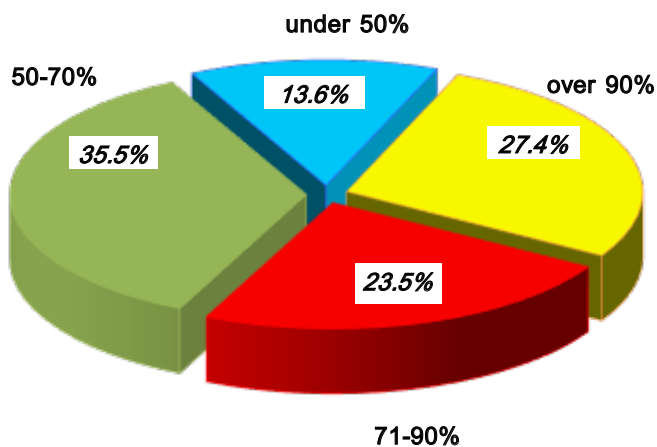
ICD-10	Classes	Number	Per 100000 population	Struc- ture (%)
	Total	1 081 242	28 084.8	100.0
	I.Certain infectious and parasitic diseases	11 542	299.8	1.1
	II.Neoplasms	98 532	2 559.3	9.1
	III.Diseases of the blood and blood-forming organs and certain disorders involving the immune mechanism	9 766	253.7	0.9
	IV.Endocrine, nutritional and metabolic diseases	37 918	984.9	3.5
	V.Mental and behavioural disorders	27 775	721.4	2.6
	VI.Diseases of the nervous system	30 765	799.1	2.8
	VII.Diseases of the eye and adnexa	21 870	568.1	2.0
	VIII.Diseases of the ear and mastoid process	17 305	449.5	1.6
	IX.Diseases of the circulatory system	97 587	2 534.8	9.0
	X.Diseases of the respiratory system	43 856	1 139.1	4.1
	XI.Diseases of the digestive system	111 966	2 908.3	10.4
	XII.Diseases of the skin and subcutaneous tissue	33 415	867.9	3.1
	XIII.Diseases of the musculoskeletal system and connective tissue	73 673	1 913.6	6.8
	XIV.Diseases of the genitourinary system	83 992	2 181.7	7.8
	XV.Pregnancy, childbirth and the puerperium	99 732	2 590.5	9.2
	XVI.Certain conditions originating in the perinatal period	x	x	x
	XVII.Congenital malformations, deformations and chromosomal abnormalities	1 217	31.6	0.1
	XVIII.Symptoms, signs and abnormal clinical and laboratory findings, not elsewhere classified	11 170	290.1	1.0
	XIX.Injury, poisoning and certain other conse- quences of external causes	67 557	1 754.8	6.3
	XXI.Factors influencing health status and contact with health services	182 751	4 746.9	16.9
	XXII.Codes for special purposes	18 853	489.7	1.7

**9. Hospitalized Patients (discharged and deceased)
in Hospitals over 65 Years of Age
by Classes of ICD-10 in 2022**

<i>ICD-10</i>	<i>Classes</i>	<i>Number</i>	<i>Per 100000 population</i>	<i>Struc- ture (%)</i>
	Total	876 270	57 762.7	100.0
	I. Certain infectious and parasitic diseases	4 581	302.0	0.5
	II. Neoplasms	87 772	5 785.8	10.0
	III. Diseases of the blood and blood-forming organs and certain disorders involving the immune mechanism	7 923	522.3	0.9
	IV. Endocrine, nutritional and metabolic diseases	21 205	1 397.8	2.4
	V. Mental and behavioural disorders	3 754	247.4	0.4
	VI. Diseases of the nervous system	21 329	1 406.0	2.4
	VII. Diseases of the eye and adnexa	48 717	3 211.4	5.6
	VIII. Diseases of the ear and mastoid process	9 833	648.2	1.1
	IX. Diseases of the circulatory system	165 720	10 924.1	18.9
	X. Diseases of the respiratory system	43 595	2 873.7	5.0
	XI. Diseases of the digestive system	81 228	5 354.5	9.3
	XII. Diseases of the skin and subcutaneous tissue	16 803	1 107.6	1.9
	XIII. Diseases of the musculoskeletal system and connective tissue	44 536	2 935.8	5.1
	XIV. Diseases of the genitourinary system	44 901	2 959.8	5.1
	XV. Pregnancy, childbirth and the puerperium	x	x	x
	XVI. Certain conditions originating in the perinatal period	x	x	x
	XVII. Congenital malformations, deformations and chromosomal abnormalities	197	13.0	0.0
	XVIII. Symptoms, signs and abnormal clinical and laboratory findings, not elsewhere classified	12 034	793.3	1.4
	XIX. Injury, poisoning and certain other consequences of external causes	47 175	3 109.7	5.4
	XXI. Factors influencing health status and contact with health services	175 686	11 581.0	20.1
	XXII. Codes for special purposes	39 281	2 589.3	4.5

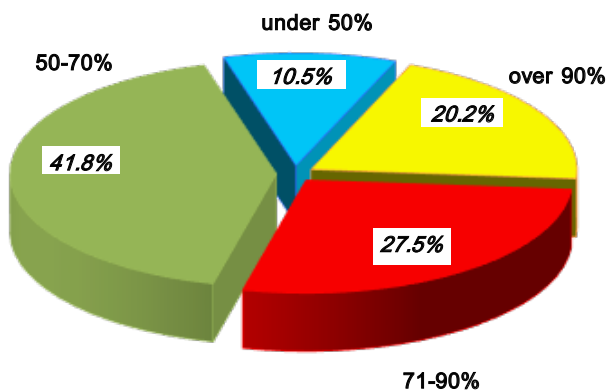
10. Primary Disability of Persons over 16 Years of Age

Year	Loss of capacity to work								Total	
	over 90%		71% – 90%		50% – 70%		under 50%		number	per 1000 population over 16 years of age
	number	%	number	%	number	%	number	%		
2001	29 335	36.8	31 394	39.3	14 847	18.6	4 227	5.3	79 803	12.1
2004	38 413	28.8	56 862	42.7	28 365	21.3	9 611	7.2	133 251	20.2
2005	28 451	24.7	44 452	38.6	28 837	25.0	13 438	11.7	115 178	17.5
2010	14 764	22.9	21 002	32.6	20 746	32.2	7 935	12.3	64 447	10.0
2015	14 308	21.7	19 838	30.2	22 031	33.5	9 574	14.6	65 751	10.8
2017	11 452	21.8	15 640	29.7	18 083	34.4	7 416	14.1	52 591	8.7
2018	11 831	22.3	15 163	28.6	18 140	34.2	7 927	14.9	53 061	8.9
2019	14 004	25.2	14 347	25.9	18 487	33.3	8 656	15.6	55 494	9.4
2020	13 751	26.0	13 527	25.6	17 765	33.6	7 836	14.8	52 879	9.0
2022	13 426	27.4	11 518	23.5	17 366	35.5	6 659	13.6	48 969	8.9



11. Primary Disability of Persons under 16 Years of Age

Year	Loss of capacity to work								Total	
	over 90%		71% – 90%		50% – 70%		under 50%		number	per 1000 population under 16 years of age
	number	%	number	%	number	%	number	%		
2001	2 570	37.8	1 757	25.8	1 735	25.5	740	10.9	6 802	5.1
2004	1 222	20.7	1 181	20.0	2 645	44.9	851	14.4	5 899	5.0
2005	801	17.1	•	•	•	•	819	17.5	4 674	4.0
2010	628	16.4	•	•	•	•	570	14.9	3 833	3.5
2015	526	10.5	815	16.2	2 351	46.9	1 322	26.4	5 014	4.7
2017	509	12.5	792	19.5	1 912	47.0	857	21.0	4 070	3.8
2018	559	14.3	829	21.2	1 770	45.2	757	19.3	3 915	3.7
2019	526	15.3	780	22.7	1 443	41.9	692	20.1	3 441	3.2
2020	546	17.7	815	26.5	1 238	40.2	480	15.6	3 079	2.9
2022	603	20.2	820	27.5	1 244	41.8	312	10.5	2 979	3.0



12. Primary Disability of Persons over 16 Years of Age by Class of Disease in 2022

(number)

ICD-10	<i>Classes</i>	<i>over 90%</i>	<i>71%–90%</i>	<i>50%–70%</i>	<i>under 50%</i>	<i>Total</i>
	Total	13 426	11 518	17 366	6 659	48 969
	I.Certain infectious and parasitic diseases	134	34	16	32	216
	II.Neoplasms	6 903	3 855	874	108	11 740
	IV.Endocrine, nutritional and metabolic diseases	74	283	1 422	1 130	2 909
	V.Mental and behavioural disorders	1 363	930	926	98	3 317
	VI.Diseases of the nervous system	423	406	826	169	1 824
	VII.Diseases of the eye and adnexa	514	295	733	168	1 710
	VIII.Diseases of the ear and mastoid process	59	67	587	212	925
	IX.Diseases of the circulatory system	2 356	3 506	5 782	2 276	13 920
	X.Diseases of the respiratory system	55	94	625	352	1 126
	XI.Diseases of the digestive system	176	336	408	121	1 041
	XIII.Diseases of the musculoskeletal system and connective tissue	526	1 100	3 022	1 263	5 911
	XIV.Diseases of the genitourinary system	285	87	310	107	789
	XVII.Congenital malformations, deformations and chromosomal abnormalities	6	22	76	33	137
	XIX.Injury, poisoning and certain other consequences of external causes	377	196	960	457	1 990
	Other classes	175	307	799	133	1 414

13. Primary Disability of Persons under 16 Years of Age by Class of Disease in 2022

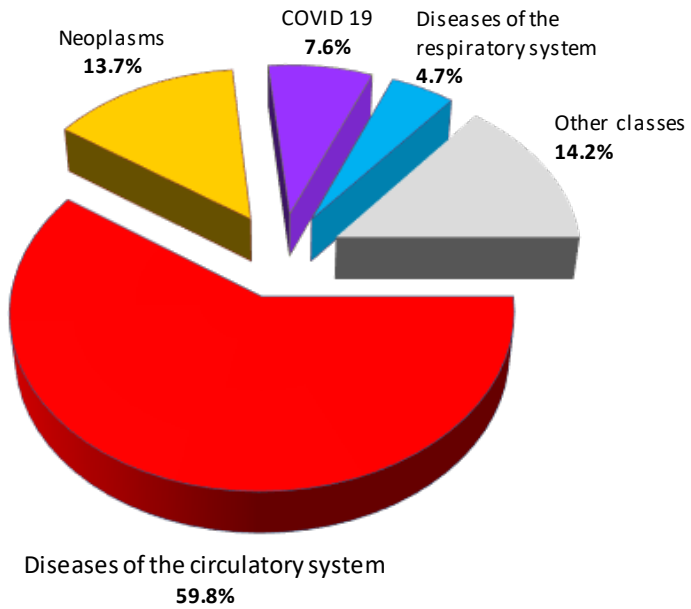
(number)						
ICD-10	Classes	over 90%	71%–90%	50%–70%	under 50%	Total
	Total	603	820	1 244	312	2 979
	I.Certain infectious and parasitic diseases	12	2	2	4	20
	II.Neoplasms	88	5	8	2	103
	III.Diseases of the blood and blood-forming organs and certain disorders involving the immune mechanism	10	12	5	1	28
	IV.Endocrine, nutritional and metabolic diseases	26	203	8	9	246
	V.Mental and behavioural disorders	140	355	280	71	846
	VI.Diseases of the nervous system	123	90	120	21	354
	VII.Diseases of the eye and adnexa	11	14	36	24	85
	VIII.Diseases of the ear and mastoid process	30	-	37	11	78
	IX.Diseases of the circulatory system	5	1	3	6	15
	X.Diseases of the respiratory system	2	2	283	72	359
	XI.Diseases of the digestive system	5	18	22	2	47
	XIII.Diseases of the musculoskeletal system and connective tissue	2	35	70	12	119
	XIV.Diseases of the genitourinary system	3	8	6	2	19
	XVII.Congenital malformations, deformations and chromosomal abnormalities	139	52	269	57	517
	XIX.Injury, poisoning and certain other consequences of external causes	-	4	13	8	25
	Other classes	7	19	82	10	118

14. Mortality by Causes in 2022

<i>Cause of death (ICD-10)</i>	<i>Number¹⁾</i>	<i>Per 100000 population</i>	<i>Struc- ture (%)</i>
Total	118 814	1 837.8	100.0
Certain infectious and parasitic diseases	450	7.0	0.4
Neoplasms	16 301	252.1	13.7
Diseases of the blood and blood-forming organs and certain disorders involving the immune mechanism	106	1.6	0.1
Endocrine, nutritional and metabolic diseases	1 288	19.9	1.1
Mental and behavioural disorders	85	1.3	0.1
Diseases of the nervous system	765	11.8	0.6
Diseases of the eye and adnexa	-	-	-
Diseases of the ear and mastoid process	-	-	-
Diseases of the circulatory system	71 069	1 099.3	59.8
Diseases of the respiratory system	5 586	86.4	4.7
Diseases of the digestive system	4 405	68.1	3.7
Diseases of the skin and subcutaneous tissue	47	0.7	0.0
Diseases of the musculoskeletal system and connective tissue	41	0.6	0.0
Diseases of the genitourinary system	1 646	25.5	1.4
Pregnancy, childbirth and the puerperium	7	0.1	0.0
Certain conditions originating in the perinatal period	125	1.9	0.1
Congenital malformations, deformations and chromosomal abnormalities	76	1.2	0.1
Symptoms, signs and abnormal clinical and laboratory findings, not elsewhere classified	5 391	83.4	4.6
External causes of morbidity and mortality	2 426	37.5	2.0
Codes for special purposes – COVID 19	9 000	139.2	7.6

¹⁾ NSI data

Mortality by Causes in 2022



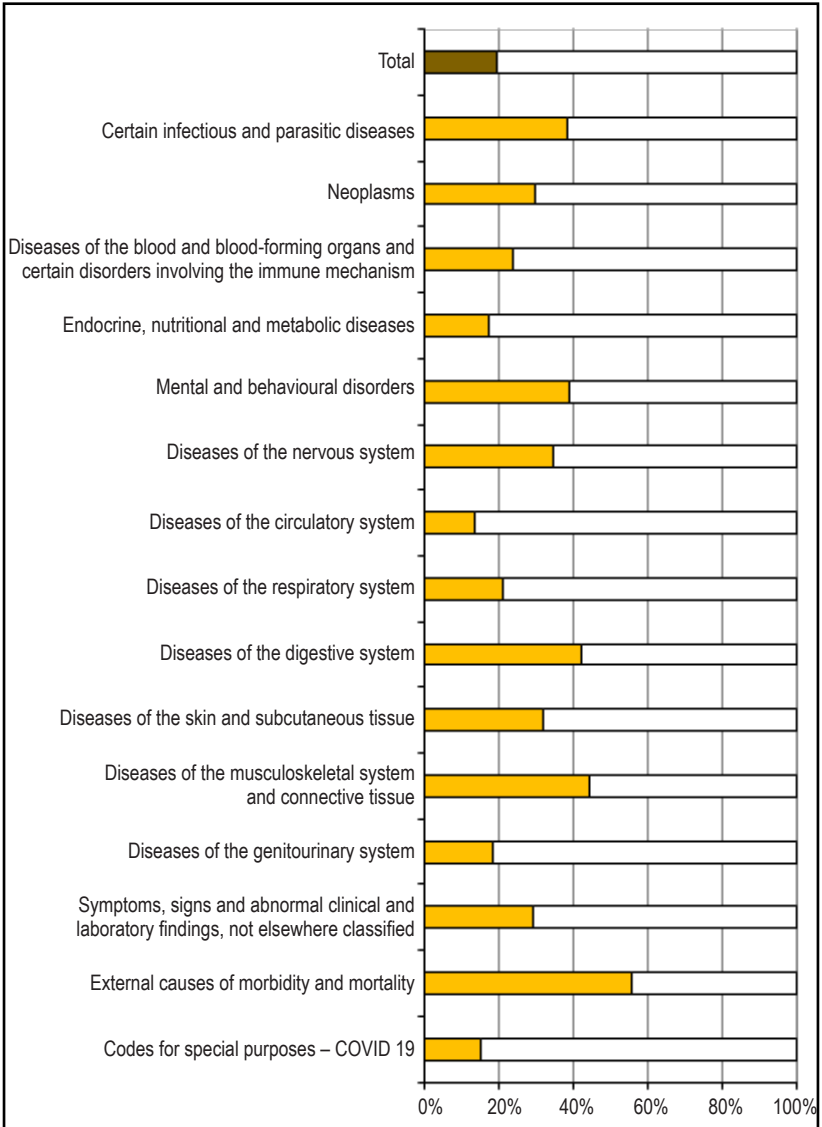
15. Premature mortality in 2022

Cause of death (ICD-10)	Deaths ¹⁾ (number)		Premature mortality (%)
	Total	Incl. up to 64 years	
Total	118 814	22 849	19.2
Certain infectious and parasitic diseases	450	172	38.2
Neoplasms	16 301	4 813	29.5
Diseases of the blood and blood-forming organs and certain disorders involving the immune mechanism	106	25	23.6
Endocrine, nutritional and metabolic diseases	1 288	219	17.0
Mental and behavioural disorders	85	33	38.8
Diseases of the nervous system	765	263	34.4
Diseases of the eye and adnexa	-	-	-
Diseases of the ear and mastoid process	-	-	-
Diseases of the circulatory system	71 069	9 543	13.4
Diseases of the respiratory system	5 586	1 163	20.8
Diseases of the digestive system	4 405	1 857	42.2
Diseases of the skin and subcutaneous tissue	47	15	31.9
Diseases of the musculoskeletal system and connective tissue	41	18	43.9
Diseases of the genitourinary system	1 646	296	18.0
Pregnancy, childbirth and the puerperium	7	7	100.0
Certain conditions originating in the perinatal period	125	125	100.0
Congenital malformations, deformations and chromosomal abnormalities	76	71	93.4
Symptoms, signs and abnormal clinical and laboratory findings, not elsewhere classified	5 391	1 564	29.0
External causes of morbidity and mortality	2 426	1 345	55.4
Codes for special purposes – COVID 19	9 000	1 320	14.7

¹⁾ NSI data

Premature mortality in 2022

(percentage)



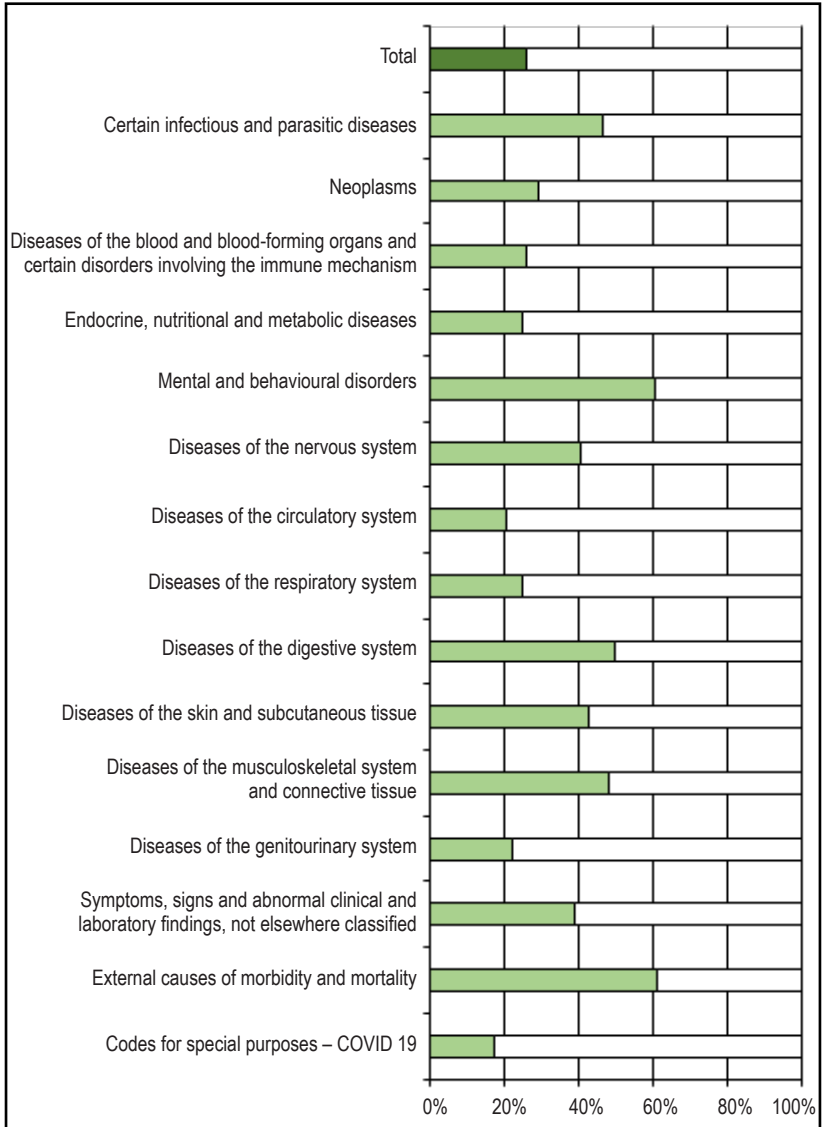
16. Premature mortality in 2022 – male

Cause of death (ICD-10)	Deaths ¹⁾ (number)		Premature mortality (%)
	Total	Incl. up to 64 years	
Total	61 656	15 732	25.5
Certain infectious and parasitic diseases	260	120	46.2
Neoplasms	9 178	2 684	29.2
Diseases of the blood and blood-forming organs and certain disorders involving the immune mechanism	55	14	25.5
Endocrine, nutritional and metabolic diseases	573	141	24.6
Mental and behavioural disorders	43	26	60.5
Diseases of the nervous system	411	166	40.4
Diseases of the eye and adnexa	-	-	-
Diseases of the ear and mastoid process	-	-	-
Diseases of the circulatory system	34 465	7 007	20.3
Diseases of the respiratory system	3 243	797	24.6
Diseases of the digestive system	2 962	1 471	49.7
Diseases of the skin and subcutaneous tissue	26	11	42.3
Diseases of the musculoskeletal system and connective tissue	27	13	48.1
Diseases of the genitourinary system	903	198	21.9
Pregnancy, childbirth and the puerperium	x	x	x
Certain conditions originating in the perinatal period	76	76	100.0
Congenital malformations, deformations and chromosomal abnormalities	47	46	97.9
Symptoms, signs and abnormal clinical and laboratory findings, not elsewhere classified	2 629	1 017	38.7
External causes of morbidity and mortality	1 786	1 090	61.0
Codes for special purposes – COVID 19	4 972	855	17.2

¹⁾ NSI data

Premature mortality in 2022 – male

(percentage)



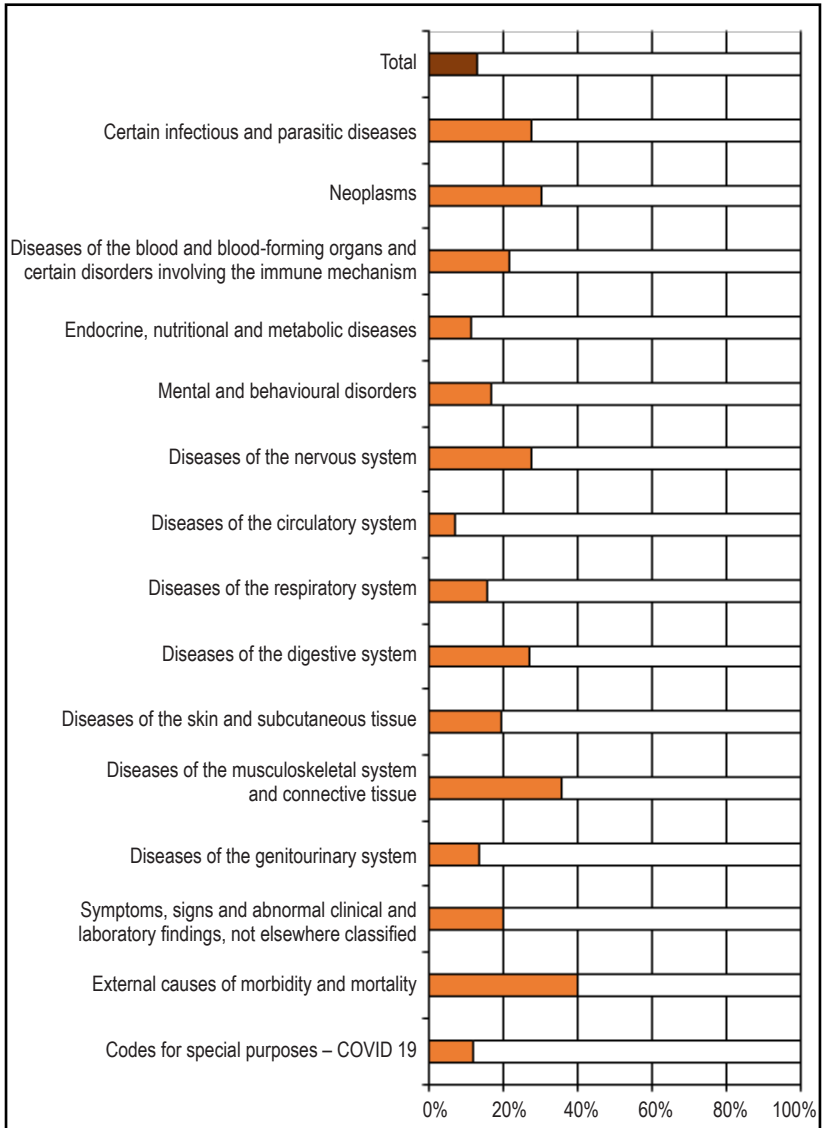
17. Premature mortality in 2022 – female

Cause of death (ICD-10)	Deaths ¹⁾ (number)		Premature mortality (%)
	Total	Incl. up to 64 years	
Total	57 158	7 117	12.5
Certain infectious and parasitic diseases	190	52	27.4
Neoplasms	7 123	2 129	29.9
Diseases of the blood and blood-forming organs and certain disorders involving the immune mechanism	51	11	21.6
Endocrine, nutritional and metabolic diseases	715	78	10.9
Mental and behavioural disorders	42	7	16.7
Diseases of the nervous system	354	97	27.4
Diseases of the eye and adnexa	-	-	-
Diseases of the ear and mastoid process	-	-	-
Diseases of the circulatory system	36 604	2 536	6.9
Diseases of the respiratory system	2 343	366	15.6
Diseases of the digestive system	1 443	386	26.7
Diseases of the skin and subcutaneous tissue	21	4	19.0
Diseases of the musculoskeletal system and connective tissue	14	5	35.7
Diseases of the genitourinary system	743	98	13.2
Pregnancy, childbirth and the puerperium	7	7	100.0
Certain conditions originating in the perinatal period	49	49	100.0
Congenital malformations, deformations and chromosomal abnormalities	29	25	86.2
Symptoms, signs and abnormal clinical and laboratory findings, not elsewhere classified	2 762	547	19.8
External causes of morbidity and mortality	640	255	39.8
Codes for special purposes – COVID 19	4 028	465	11.5

¹⁾ NSI data

Premature mortality in 2022 – female

(percentage)



III. HEALTH FACILITIES

1. Health Facilities and Hospital Beds on 31.XII.2022

<i>Type of health establishments</i>	<i>Number</i>	<i>Beds</i>
Health establishments for hospital care – total¹⁾	319	52 462
Multiprofile hospitals	111	25 303
Multiprofile hospitals for active treatment	109	25 188
Specialized hospitals	60	6 514
Specialized hospitals for active treatment	30	2 866
Specialized hospitals for long term treatment and rehabilitation	10	896
Specialized hospitals for rehabilitation	19	2 607
Psychiatric hospitals	12	2 082
Private facilities for hospital care	116	14 901
Health facilities for outpatient care (according to the reported health establishments)		
Outpatient facilities for primary medical care – individual practices	2 823	-
Outpatient facilities for primary dental care – individual practices	4 701	-
Outpatient facilities for primary medical care – group practices	187	-
Outpatient facilities for primary dental care – group practices	387	-
Outpatient facilities for specialized medical care – individual practices	2 711	-
Outpatient facilities for specialized dental care – individual practices	80	-

¹⁾ Health establishments of other administrations are included, but not allocated by type.

1. Health Facilities and Hospital Beds on 31.XII.2022

(continued from previous)

<i>Type of health establishments</i>	<i>Number</i>	<i>Beds</i>
Outpatient facilities for specialized medical care – group practices	116	-
Outpatient facilities for health care – individual practices	37	-
Outpatient facilities for health care – group practices	8	-
Medical center	786	948
Dental center	64	5
Medico-dental center	60	74
Diagnostic-consulting center	111	276
Stand-alone medico-diagnostic and medico-technical laboratories	1 151	-
Other healthcare and health establishments		
Integral oncological centers	7	1 193
Centers for dermato-venerological diseases	3	30
Centers for mental health	12	1 022
Emergency healthcare centers	27	-
Stand alone centers for transfusional haematology	4	-
Medico-social care centers for children	4	450
Hospices	43	1 229
Centers without beds	6	-
Regional health inspectorates	28	-

2. Beds in Hospitals on 31.XII.2022 by Type

<i>Type of beds</i>	<i>Number</i>	<i>Structure (%)</i>	<i>Per 10 000 population</i>
Total¹⁾	52 462		81.4
Total²⁾	48 800	100.0	75.7
For active treatment	36 829	75.5	57.1
<i>Intensive care</i>	1 998	4.1	3.1
obstetrics and gynecology	16	0.0	0.0
internal medicine	14	0.0	0.0
cardiology	184	0.4	0.3
neurosurgery	-	-	-
neonatology	36	0.1	0.1
neurology	71	0.2	0.1
pediatrics	34	0.1	0.1
general surgery	22	0.0	0.0
intensive care ward	1 565	3.2	2.4
incl.: neonatology	-	-	-
pediatrics	10	0.0	0.0
others	56	0.1	0.1
of them: COVID 19	21	0.0	0.0
<i>Obstetric-gynecological</i>	3 209	6.6	5.0
assisted reproduction	60	0.1	0.1
gynecology	1 267	2.6	2.0
pathological pregnancy	609	1.3	0.9
obstetrics	1 273	2.6	2.0
<i>Pediatric</i>	4 317	8.8	6.7
pediatric gastroenterology	21	0.0	0.0
pediatric endocrinology and metabolic diseases	34	0.2	0.2
pediatric cardiology	21	0.0	0.0
pediatric clinical haematology and oncology	56	0.1	0.1
pediatric nephrology and hemodialysis	19	0.0	0.0
pediatric pneumology and phthisiatry	64	0.1	0.1
pediatric rheumatology	15	0.0	0.0

¹⁾ Hospital beds of other administrations are included, but not allocated by type.

²⁾ Hospital beds of other administrations are not included.

2. Beds in Hospitals on 31.XII.2022 by Type

(continued from previous)

Type of beds	Number	Structure (%)	Per 10 000 population
neonatology	1 494	3.1	2.3
pediatrics	2 593	5.3	4.0
Therapeutic	17 245	35.4	26.7
internal medicine	1 416	2.9	2.2
gastroenterology	1 869	3.8	2.9
endocrinology and metabolic diseases	923	1.9	1.4
infectious diseases	857	1.8	1.3
incl. COVID 19	170	0.3	0.3
cardiology	2 876	5.9	4.5
clinical allergology	30	0.1	0.0
clinical immunology	5	0.0	0.0
clinical toxicology	53	0.1	0.1
clinical haematology	656	1.3	1.0
dermato-venerology	257	0.5	0.4
radiotherapy	417	0.9	0.6
medical oncology	1 038	2.1	1.6
neurology	3 207	6.6	5.0
nephrology	722	1.5	1.1
nuclear medicine	7	0.0	0.0
pulmonology and phthisiology	2 299	4.7	3.6
incl.: pulmonary tuberculosis	357	0.7	0.6
extrapulmonary tuberculosis	40	0.1	0.1
chronic nonspecific pulmonary disease	1 012	2.1	1.6
others	890	1.8	1.3
rheumatology	574	1.2	0.9
COVID 19 ³⁾	39	0.1	0.1
Surgical	10 060	20.6	15.6
thoracal surgery	306	0.6	0.5
pediatric surgery	134	0.3	0.2
cardiosurgery	225	0.5	0.3
maxillofacial surgery	160	0.3	0.2
neurosurgery	521	1.1	0.8

³⁾ Transformed by other beds out of the infectious beds.

2. Beds in Hospitals on 31.XII.2022 by Type

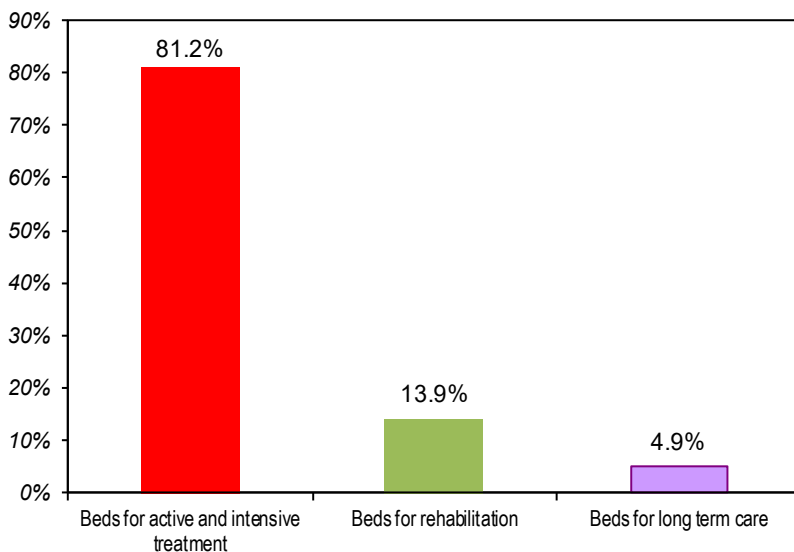
(continuation and ending)

<i>Type of beds</i>	<i>Number</i>	<i>Structure (%)</i>	<i>Per 10 000 population</i>
orthopedics and traumatology	2 055	4.3	3.2
ophthalmology	636	1.3	1.0
plastic and reconstructive surgery	194	0.4	0.3
vascular surgery	601	1.2	0.9
urology	1 146	2.3	1.8
oto-rhino-laryngology	754	1.5	1.2
general surgery	3 328	6.8	5.2
For long term treatment	1 942	4.0	3.0
<i>For continuing treatment</i>	<i>1 793</i>	<i>3.7</i>	<i>2.8</i>
internal medicine	439	0.9	0.7
cardiology	120	0.2	0.2
neurology	319	0.7	0.5
orthopedics and traumatology	83	0.2	0.1
pulmonology and phthysiology	585	1.2	0.9
others	247	0.5	0.4
<i>For palliative care</i>	<i>149</i>	<i>0.3</i>	<i>0.2</i>
For rehabilitation	7 100	14.5	11.1
Psychiatric	2 929	6.0	4.5
<i>For active treatment</i>	<i>2 446</i>	<i>5.0</i>	<i>3.8</i>
gerontology	80	0.2	0.1
child-adolescent	51	0.1	0.1
narcology	82	0.2	0.1
general psychiatry	2 233	4.5	3.5
forensic psychiatry	-	-	-
others	-	-	-
<i>For long term care</i>	<i>483</i>	<i>1.0</i>	<i>0.7</i>
gerontology	-	-	-
child-adolescent	-	-	-
narcology	10	0.0	0.0
general psychiatry	469	1.0	0.7
forensic psychiatry	-	-	-
others	4	0.0	0.0
Places for short stay	2 283		3.5
from them: psychiatric	457		0.7

3. Beds in Hospitals and Other Healthcare Establishments on 31.XII.2022 r. by Type¹⁾

Type of beds	Number	Structure (%)	Per 10 000 population
Total²⁾	54 707		84.8
Total³⁾	51 045	100.0	79.2
Beds for active and intensive treatment	41 456	81.2	64.3
Beds for rehabilitation	7 100	13.9	11.0
Beds for long term care	2 489	4.9	3.9
Other beds	-	-	-
Psychiatric beds	3 951	7.7	6.1
Places for short stay	3 233		

percentage



¹⁾ According to statistical grouping used by Eurostat.

²⁾ Hospital beds of other administrations included, but not allocated by type.

³⁾ Hospital beds of other administrations not included.

IV. MEDICAL PERSONNEL

1. Medical Personnel¹⁾

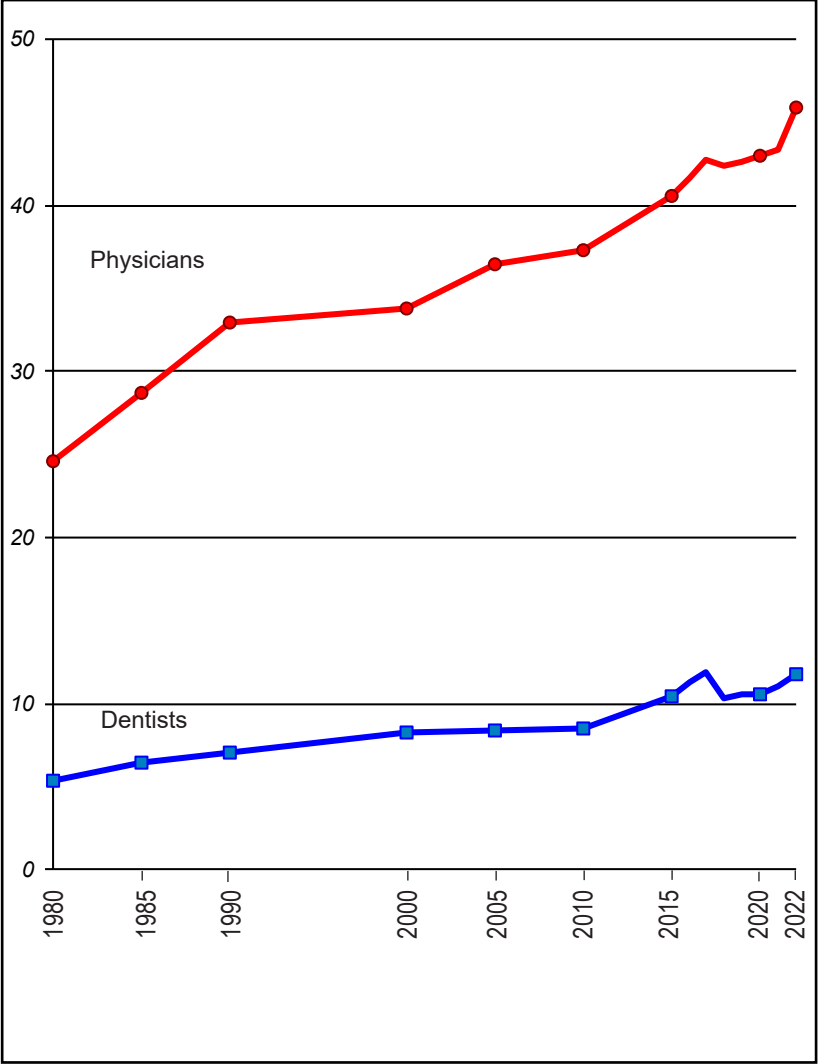
	1990	2000	2010 ²⁾	2020	2021	2022
Number						
Physicians	28 497	27 526	27 903	29 717	29 604	29 599
Dentists	6 109	6 778	6 446	7 312	7 499	7 602
Auxiliary medical personnel	88 387	49 840	47 468	44 676	44 451	44 493
incl.:						
med. assistants	7 617	3 158	2 417	1 919	1 814	1 733
midwives	7 544	4 131	3 247	3 251	3 264	3 285
nurses	53 810	31 479	31 786	29 160	28 816	28 827
clinical laboratory and X-ray technicians	7 604	5 964	5 765	5 909	5 930	5 933
dental technicians	2 858	1 305	1 280	1 573	1 636	1 628
other	8 954	3 803	2 973	2 864	2 991	3 087
Per 10 000 population						
Physicians	32.9	33.8	37.2	43.0	43.3	45.9
Dentists	7.0	8.3	8.6	10.6	11.0	11.8
Auxiliary medical personnel	102.0	61.2	63.2	64.6	65.0	69.0
Population per:						
one physician	304	296	269	233	231	218
one dentist	1 419	1 202	1 164	946	912	848

¹⁾ NSI data

²⁾ Data for 2010 have been corrected

Medical Personnel

(per 10000 population)



2. Physicians by Speciality¹⁾

Specialities	2021		2022	
	number	per 10000 population	number	per 10000 population
Physicians – total²⁾	29 604	43.3	29 599	45.9
<i>Clinical specialties</i>	24 824	36.3	24 965	38.7
obstetrics and gynecology	1 756	2.6	1 756	2.7
anesthesiology and intensive care	1 666	2.4	1 717	2.7
internal medicine	948	1.4	909	1.4
gastroenterology	681	1.0	726	1.1
endocrinology and metabolic diseases	724	1.1	719	1.1
infectious diseases	248	0.4	237	0.4
cardiology	1 843	2.7	1 870	2.9
laboratory medicine	645	0.9	640	1.0
clinical hematology	186	0.3	189	0.3
dermatology and venereology	447	0.7	459	0.7
radiotherapy	119	0.2	121	0.2
medical oncology	276	0.4	287	0.4
neurosurgery	198	0.3	203	0.3
neonatology	259	0.4	264	0.4
neurology	1 437	2.1	1 433	2.2
nephrology	487	0.7	482	0.7
radiology	974	1.4	1 007	1.6
orthopedics and traumatology	1 020	1.5	1 024	1.6
ophthalmology	1 019	1.5	1 012	1.6
pediatrics	1 408	2.1	1 438	2.2
pulmonology and phthisiology	596	0.9	602	0.9
psychiatry	675	1.0	656	1.0
rheumatology	226	0.3	245	0.4
emergency medicine	1 284	1.9	1 246	1.9
urology	522	0.8	543	0.8
otorhinolaryngology	684	1.0	678	1.1
physical and rehabilitation medicine	658	1.0	694	1.1
general surgery	1 538	2.2	1 508	2.3
<i>Non-clinical specialties</i>	709	1.0	657	1.0
<i>Individual and group practices for primary care</i>	3 945	5.8	3 854	6.0
<i>Unallocated by specialties</i>	126	0.2	123	0.2

¹⁾ NSI data

²⁾ Oncologists are divided into main specialties

V. ACTIVITIES OF THE HEALTH FACILITIES

1. Activities of the Inpatient Wards of the Hospital Health Care Facilities in 2022

<i>Type of establishments</i>	<i>Admitted</i>	<i>Discharged</i>	<i>Deceased</i>	<i>Bed days</i>
Healthcare establishments for hospital care – total¹⁾	2 002 799	1 968 498	35 553	9 964 219
Multiprofile hospitals	995 389	967 757	28 325	4 864 123
Multiprofile hospitals for active treatment	993 352	965 725	28 320	4 849 464
Specialized hospitals	232 256	231 622	767	1 480 667
Specialized hospitals for active treatment	128 134	127 579	602	600 844
Specialized hospitals for long term treatment and rehabilitation	15 684	15 591	162	232 386
Specialized hospitals for rehabilitation	86 582	86 582	3	612 631
Psychiatric hospitals	7 597	7 559	56	555 904
Private facilities for hospital care	767 557	761 560	6 405	3 063 525
Integral oncological centers	64 123	63 511	605	240 743
Centers for dermato-venereological diseases	1 401	1 401	-	8 450
Centers for mental health	12 474	12 412	22	325 283

¹⁾ Excl. facilities of other administrations.

1. Activities of the Inpatient Wards of the Hospital Health Care Facilities in 2022

(continued from previous)

<i>Type of establishments</i>	<i>Utilization of beds (%)</i>	<i>Turnover of beds</i>	<i>Average length of stay (days)</i>	<i>Hospital mortality (%)</i>
Healthcare establishments for hospital care – total¹⁾	56.5	42	4.9	1.8
Multiprofile hospitals	52.7	40	4.8	2.8
Multiprofile hospitals for active treatment	52.8	40	4.8	2.8
Specialized hospitals	62.0	36	6.3	0.3
Specialized hospitals for active treatment	57.5	45	4.7	0.5
Specialized hospitals for long term treatment and rehabilitation	71.1	18	14.5	1.0
Specialized hospitals for rehabilitation	63.5	33	7.1	0.0
Psychiatric hospitals	70.9	4	61.8	0.7
Private facilities for hospital care	58.3	54	4.0	0.8
Integral oncological centers	55.9	54	3.7	0.9
Centers for dermato-venerological diseases	77.2	47	6.0	-
Centers for mental health	86.9	13	24.7	0.2

¹⁾ Excl. facilities of other administrations.

2. Utilization, Turnover and Average Length of Stay in Health Care Facilities in 2022 by Type of Beds

<i>Type of beds</i>	<i>Utilization (%)</i>	<i>Turnover</i>	<i>Average length of stay (days)</i>
Total¹⁾	56.5	42	4.9
For active treatment	55.6	55	3.7
<i>Intensive care</i>	49.6	55	3.3
obstetrics and gynecology	61.0	200	1.1
internal medicine	58.9	61	3.5
cardiology	48.8	79	2.2
neurosurgery	-	-	-
neonatology	84.7	54	5.7
neurology	61.9	46	4.9
pediatrics	53.7	32	6.1
general surgery	74.9	68	4.0
intensive care ward	48.3	57	3.1
incl.: neonatology	-	-	-
pediatrics	42.2	34	4.6
others	45.6	23	7.2
of them: COVID 19	49.3	23	7.8
<i>Obstetric-gynecological</i>	50.1	63	2.9
assisted reproduction	26.0	83	1.1
gynecology	49.2	71	2.5
pathological pregnancy	47.6	55	3.2
obstetrics	53.4	58	3.4
<i>Pediatric</i>	53.5	41	4.8
pediatric gastroenterology	67.9	51	4.9
pediatric endocrinology and metabolic diseases	66.6	79	3.1
pediatric cardiology	45.8	38	4.4
pediatric clinical haematology and oncology	69.7	44	5.7
pediatric nephrology and hemodialysis	76.1	75	3.7
pediatric pneumology and phthysiatry	53.4	30	6.5
pediatric rheumatology	55.8	61	3.4
neonatology	55.8	42	4.9
pediatrics	51.5	40	4.7

¹⁾ Excl. facilities of other administrations.

2. Utilization, Turnover and Average Length of Stay in Health Care Facilities in 2022 by Type of Beds

(continued from previous)

Type of beds	Utilization (%)	Turnover	Average length of stay (days)
Therapeutic	57.0	52	4.0
internal medicine	45.8	37	4.6
gastroenterology	62.2	68	3.3
endocrinology and metabolic diseases	50.4	52	3.6
infectious diseases	54.6	34	5.9
incl. COVID 19	55.8	30	6.9
cardiology	52.4	64	3.0
clinical alergology	46.9	52	3.3
clinical immunology	2.4	8	1.1
clinical toxicology	46.5	76	2.2
clinical haematology	70.5	66	3.9
dermato-venerology	60.7	32	6.9
radiotherapy	81.0	25	11.7
medical oncology	67.7	128	1.9
neurology	60.0	h49	4.5
nephrology	52.3	44	4.4
nuclear medicine	3.6	4	3.7
pulmonology and phtisiology	57.3	30	7.0
incl.: pulmonary tuberculosis	53.4	5	35.6
extrapulmonary tuberculosis	51.3	19	9.7
chronic nonspecific pulmonary disease	57.5	35	6.1
others	59.0	36	6.0
rheumatology	52.8	71	2.7
COVID 19 ²⁾	50.8	25	7.3
Surgical	57.0	63	3.3
thoracal surgery	51.0	45	4.1
pediatric surgery	50.9	58	3.2
cardiosurgery	52.0	48	3.9
maxillofacial surgery	47.4	73	2.4
neurosurgery	63.8	55	4.3
orthopedics and traumatology	58.8	55	3.9

²⁾ Transformed by other beds out of the infectious beds.

2. Utilization, Turnover and Average Length of Stay in Health Care Facilities in 2022 by Type of Beds

(continuation and ending)

<i>Type of beds</i>	<i>Utilization (%)</i>	<i>Turnover</i>	<i>Average length of stay (days)</i>
ophthalmology	48.2	123	1.4
plastic and reconstructive surgery	60.5	72	3.1
vascular surgery	55.1	57	3.5
urology	56.3	65	3.2
oto-rhino-laryngology	51.9	67	2.8
general surgery	59.6	59	3.7
For long term treatment	38.9	10	14.4
<i>For continuing treatment</i>	37.3	9	14.9
internal medicine	11.6	3	16.0
cardiology	5.9	6	3.6
neurology	24.5	9	10.3
orthopedics and traumatology	52.6	19	10.0
pulmonology and phthisiology	73.7	14	18.6
others	17.7	6	10.8
<i>For palliative care</i>	57.3	18	11.5
For rehabilitation	59.3	30	7.3
Psychiatric	70.9	7	35.8
<i>For active treatment</i>	71.2	8	32.9
gerontology	78.4	7	39.3
child-adolescent	29.1	12	8.8
narcology	65.2	8	30.2
general psychiatry	72.1	8	33.6
forensic psychiatry	-	-	-
others	-	-	-
<i>For long term care</i>	69.4	4	67.5
gerontology	-	-	-
child-adolescent	-	-	-
narcology	83.9	6	52.8
general psychiatry	69.5	4	68.0
forensic psychiatry	-	-	-
others	-	-	-

3. Women in childbirth served at inpatient healthcare facilities

	2000	2005	2015	2020	2021	2022
Women that gave birth at healthcare facilities	71 107	67 845	60 700	54 846	54 294	52 281
incl. cases of:						
transverse and oblique positions of the fetus	234	327	481	713	752	616
of these: unattended	23	19	20	96	156	31
Narrow pelvis	857	715	1 442	1 357	1 713	1 733
pelvic malpositions	1 693	1 952	1 316	1 510	1 710	1 331
complicated by:						
hemorrhages	1 518	884	675	683	752	762
extragenital diseases	629	779	702	1 509	1 290	1 155
of these: cardio-vascular	148	160	94	447	546	446
diabetes mellitus	79	128	225	454	491	339
Women admitted after childbirth outside health facilities	793	401	250	169	180	186
Total number of women in childbirth served	71 900	68 246	60 950	55 015	54 474	52 467
incl.: multiple gestation	614	582	986	955	980	983
women that gave birth after assisted reproduction	.	.	.	1 587	1 674	1 214
Distribution of women in childbirth by age						
up to 19 years of age	12 669	9 863	6 055	5 361	5 158	5 151
from 20 to 35 years of age	56 185	54 407	47 360	40 716	40 691	38 460
above 35 years of age	3 046	3 976	7 535	8 938	8 625	8 856

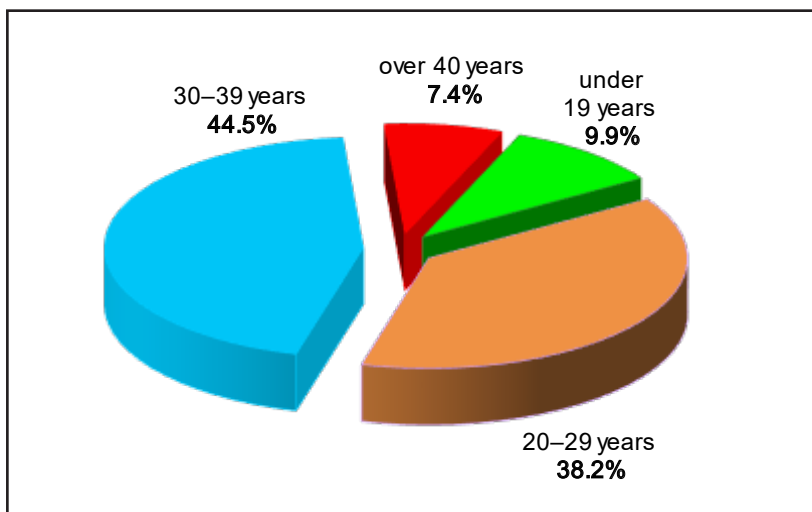
4. Abortions Performed in Health Facilities in 2022 by Age Group and Type of Abortion

(Number)

Age groups	Abortions	by type				
		Spontaneous	Therapeutic	from them:		Other types and abortion, unspecified
				by request	medical indicated	
Total	18 972	5 357	13 607	11 033	2 574	8
< 15	105	55	49	20	29	1
15–19	1 769	591	1 178	1 023	155	-
20–24	3 176	740	2 434	2 146	288	2
25–29	4 069	1 154	2 914	2 442	472	1
30–34	4 934	1 301	3 631	2 906	725	2
35–39	3 518	1 031	2 486	1 881	605	1
40–44	1 252	434	818	552	266	-
45–49	139	47	92	59	33	-
> 50	10	4	5	4	1	1

Abortions performed by Age

(percentage)



5. Abortions Performed in Health Facilities

(Number)

	1980	1990	2000	2015	2020	2021	2022
Total	156 056	144 644	61 378	27 782	19 328	19 353	18 972
incl.:							
medical indicated	3 830	4 352	2 567	2 630	2 406	2 453	2 574
spontaneous abortions	15 787	12 601	10 626	8 590	5 872	5 697	5 357
other	180	91	29	395	5	4	8
legal abortions	136 259	127 600	48 156	16 167	11 045	11 199	11 033

6. Persons Served by the Centers for Urgent Medical Care and Urgent Wards

	2021		2022	
	Number	(%)	Number	(%)
Persons attended – total	2 380 127	100.0	2 399 805	100.0
incl.:				
Centers for urgent medical care	1 150 181	48.3	1 093 021	45.5
incl. at calls performed	724 450	30.4	674 353	28.1
Urgent wards	1 229 946	51.7	1 306 784	54.5

7. Number and Type of Surgeries of Patients, Discharged from Hospitals in 2022

<i>Type of surgery</i>	<i>Discharged surgical patients</i>	<i>incl.:</i>		<i>Lethality (%)</i>
		<i>with complications</i>	<i>dead</i>	
Total	615 269	2 643	4 001	0.7
Surgery of the gastrointestinal tract	65 784	428	1 224	1.9
Apendectomy	4 253	9	11	0.3
Herniotomy due to unobstructed hernia	12 666	16	13	0.1
Obstetrics-gynecological surgeries	102 377	169	12	0.0
Endocrine surgeries	1 813	3	1	0.1
Orthopaedics-traumatology surgeries	106 775	602	602	0.6
Thoracic surgeries ¹⁾	14 858	102	299	2.0
Breast surgery due to neoplasm	7 016	11	8	0.1
Urological surgeries	65 170	216	146	0.2
Otho-Rhino-Larhingological surgeries	38 255	14	27	0.1
Ophthalmological surgeries	59 224	31	-	-
Neurosurgies	13 876	68	407	2.9
Cardiovascular surgeries	6 171	490	186	3.0
Vascular surgeries	16 142	107	229	1.4
Facial and dental surgeries	8 240	10	3	0.0
Plastic, reconstructive and a esthetic surgeries	10 251	20	26	0.3
Other surgical interventions	106 333	383	839	0.8

¹⁾ From 2022 year – incl. "Breast surgery due to neoplasm".

**8. Number and Type of Surgeries of Patients,
Discharged from Hospitals in 2022
by type of healthcare facility**

<i>Type of surgery</i>	<i>Total</i>	<i>Multiprofile hospitals for active treatment</i>	<i>Specialized hospitals for active treatment</i>
Total	615 269	266 043	32 189
Surgery of the gastrointestinal tract	65 784	32 629	1 322
Apendectomy	4 253	3 371	-
Herniotomy due to unobstructed hernia	12 666	6 642	206
Obstetrics-gynecological surgeries	102 377	39 779	19 379
Endocrine surgeries	1 813	372	338
Orthopaedics-traumatology surgeries	106 775	51 467	1 960
Thoracic surgeries ¹⁾	14 858	4 511	2 145
Breast surgery due to neoplasm	7 016	1 453	1 692
Urological surgeries	65 170	27 316	741
Otho-Rhino-Larhingological surgeries	38 255	20 789	190
Ophtalmological surgeries	59 224	18 854	3 360
Neurosurgeries	13 876	8 619	92
Cardiovascular surgeries	6 171	2 358	-
Vascular surgeries	16 142	5 657	67
Facial and dental surgeries	8 240	6 926	-
Plastic, reconstructive and esthetic surgeries	10 251	3 262	100
Other surgical interventions	106 333	43 504	2 495

¹⁾ From 2022 year – incl. "Breast surgery due to neoplasm".

8. Number and Type of Surgeries of Patients, Discharged from Hospitals in 2022 by type of healthcare facility

(continued from previous)

<i>Type of surgery</i>	<i>Private facilities for hospital care</i>	<i>Other facilities for hospital care</i>	<i>Integral oncological centers</i>
Total	273 409	31 543	12 085
Surgery of the gastrointestinal tract	25 424	5 169	1 240
Apendectomy	727	147	8
Herniotomy due to unobstructed hernia	4 468	1 145	205
Obstetrics-gynecological surgeries	39 809	1 265	2 145
Endocrine surgeries	909	172	22
Orthopaedics-traumatology surgeries	48 558	4 790	-
Thoracic surgeries ¹⁾	5 372	930	1 900
Breast surgery due to neoplasm	1 301	670	1 900
Urological surgeries	31 696	4 078	1 339
Otho-Rhino-Larhingological surgeries	15 899	1 144	233
Ophtalmological surgeries	34 304	2 706	-
Neurosurgeries	4 570	595	-
Cardiovascular surgeries	3 813	-	-
Vascular surgeries	9 487	881	50
Facial and dental surgeries	1 262	18	34
Plastic, reconstructive and esthetic surgeries	6 496	389	4
Other surgical interventions	45 810	9 406	5 118

¹⁾ From 2022 year – incl. "Breast surgery due to neoplasm".

VI. ECONOMIC INDICATORS OF THE HEALTH FACILITIES FOR 2022

(in leva)

<i>Types of health facilities</i>	Average costs:				
	per patient	per bed	per bed day	per medicine day	per food day
Multiprofile hospital for active treatment					
University and national	2 254.86	102 048	470.83	178.32	3.54
Regional	1 389.47	54 484	280.64	47.34	3.33
Municipal	1 219.62	40 349	252.95	21.59	2.96
Specialized hospital for active treatment					
University and national	3 155.13	161 338	707.29	441.13	2.79
Pulmonary diseases	1 547.77	27 810	131.80	20.82	3.99
Obstetries and gynecological diseases	1 218.09	60 603	291.18	26.51	2.40
State psychiatric hospitals	5 153.18	21 577	83.41	2.44	3.11
Pulmophthysiatrical diseases	1 109.82	27 847	135.92	15.48	4.66
Other healthcare establishments for hospital care					
Specializes oncological hospitals and centers	3 060.62	171 393	852.78	597.32	3.53
Centers for dermato-venerological diseases	723.69	33 797	119.99	8.78	4.75
Centers for mental health	2 277.01	29 263	92.21	1.83	4.95

VII. REVIEW BY REGIONS
1. Population on 31.XII.2022¹⁾

<i>Regions</i>	<i>Total</i>	<i>Male</i>	<i>Female</i>	<i>Urban</i>	<i>Rural</i>
Number					
Total	6 447 710	3 099 503	3 348 207	4 746 710	1 701 000
Blagoevgrad	288 161	139 761	148 400	172 440	115 721
Burgas	378 596	181 979	196 617	289 254	89 342
Varna	430 847	207 158	223 689	362 876	67 971
V. Tarnovo	204 033	97 528	106 505	142 502	61 531
Vidin	72 754	34 935	37 819	46 363	26 391
Vratca	148 874	72 166	76 708	89 109	59 765
Gabrovo	95 957	45 500	50 457	76 407	19 550
Dobrich	147 208	70 448	76 760	104 331	42 877
Kardzhali	142 508	69 961	72 547	59 637	82 871
Kyustendil	108 703	52 220	56 483	74 592	34 111
Lovech	113 356	54 868	58 488	70 158	43 198
Montana	116 172	56 283	59 889	74 578	41 594
Pazardzhik	226 209	109 829	116 380	138 966	87 243
Pernik	111 746	53 436	58 310	87 601	24 145
Pleven	220 346	106 059	114 287	148 692	71 654
Plovdiv	631 516	301 274	330 242	469 806	161 710
Razgrad	101 107	48 508	52 599	48 334	52 773
Ruse	189 623	90 591	99 032	147 603	42 020
Silistra	95 614	46 157	49 457	42 803	52 811
Sliven	170 583	82 278	88 305	111 518	59 065
Smolyan	93 354	44 674	48 680	53 564	39 790
Sofia-capital	1 280 334	611 000	669 334	1 217 692	62 642
Sofia	227 610	111 132	116 478	137 205	90 405
St. Zagora	291 852	140 327	151 525	207 954	83 898
Targovishte	96 201	46 661	49 540	54 062	42 139
Haskovo	207 439	100 166	107 273	149 759	57 680
Shumen	149 628	72 514	77 114	93 581	56 047
Yambol	107 379	52 090	55 289	75 323	32 056

¹⁾ NSI data

1. Population on 31.XII.2022

(continued from previous)

<i>Regions</i>	<i>Total</i>	<i>Male</i>	<i>Female</i>	<i>Urban</i>	<i>Rural</i>
Percentage (%)					
Total	100.0	48.1	51.9	73.6	26.4
Blagoevgrad	100.0	48.5	51.5	59.8	40.2
Burgas	100.0	48.1	51.9	76.4	23.6
Varna	100.0	48.1	51.9	84.2	15.8
V. Tarnovo	100.0	47.8	52.2	69.8	30.2
Vidin	100.0	48.0	52.0	63.7	36.3
Vratca	100.0	48.5	51.5	59.9	40.1
Gabrovo	100.0	47.4	52.6	79.6	20.4
Dobrich	100.0	47.9	52.1	70.9	29.1
Kardzhali	100.0	49.1	50.9	41.8	58.2
Kyustendil	100.0	48.0	52.0	68.6	31.4
Lovech	100.0	48.4	51.6	61.9	38.1
Montana	100.0	48.4	51.6	64.2	35.8
Pazardzhik	100.0	48.6	51.4	61.4	38.6
Pernik	100.0	47.8	52.2	78.4	21.6
Pleven	100.0	48.1	51.9	67.5	32.5
Plovdiv	100.0	47.7	52.3	74.4	25.6
Razgrad	100.0	48.0	52.0	47.8	52.2
Ruse	100.0	47.8	52.2	77.8	22.2
Silistra	100.0	48.3	51.7	44.8	55.2
Sliven	100.0	48.2	51.8	65.4	34.6
Smolyan	100.0	47.9	52.1	57.4	42.6
Sofia-capital	100.0	47.7	52.3	95.1	4.9
Sofia	100.0	48.8	51.2	60.3	39.7
St. Zagora	100.0	48.1	51.9	71.3	28.7
Targovishte	100.0	48.5	51.5	56.2	43.8
Haskovo	100.0	48.3	51.7	72.2	27.8
Shumen	100.0	48.5	51.5	62.5	37.5
Yambol	100.0	48.5	51.5	70.1	29.9

2. Live Births in 2022¹⁾

<i>Regions</i>	<i>Total</i>	<i>Urban</i>	<i>Rural</i>	<i>Total</i>	<i>Urban</i>	<i>Rural</i>
	Number			Per 1000 population		
Total	56 596	41 986	14 610	8.8	8.8	8.5
Blagoevgrad	2 409	1 516	893	8.3	8.8	7.7
Burgas	3 221	2 388	833	8.5	8.3	9.3
Varna	3 980	3 299	681	9.2	9.1	10.0
V. Tarnovo	1 574	1 097	477	7.7	7.7	7.7
Vidin	500	326	174	6.8	7.0	6.5
Vratca	1 235	697	538	8.2	7.8	8.9
Gabrovo	685	528	157	7.1	6.9	8.0
Dobrich	1 082	751	331	7.3	7.1	7.7
Kardzhali	1 098	507	591	7.8	8.5	7.2
Kyustendil	813	630	183	7.4	8.4	5.3
Lovech	1 001	601	400	8.8	8.5	9.2
Montana	890	549	341	7.6	7.3	8.1
Pazardzhik	2 004	1 247	757	8.8	9.0	8.6
Pernik	778	662	116	6.9	7.5	4.7
Pleven	1 838	1 125	713	8.3	7.5	9.8
Plovdiv	6 107	4 615	1 492	9.7	9.8	9.2
Razgrad	772	351	421	7.6	7.2	7.9
Ruse	1 343	1 057	286	7.0	7.1	6.7
Silistra	772	301	471	8.0	7.0	8.9
Sliven	2 091	1 195	896	12.2	10.7	15.1
Smolyan	482	312	170	5.1	5.8	4.2
Sofia-capital	12 778	12 250	528	10.0	10.1	8.4
Sofia	2 018	1 305	713	8.8	9.5	7.8
St. Zagora	2 448	1 687	761	8.4	8.1	9.0
Targovishte	801	444	357	8.3	8.2	8.4
Haskovo	1 627	1 147	480	7.8	7.6	8.3
Shumen	1 215	711	504	8.1	7.6	9.0
Yambol	1 034	688	346	9.6	9.1	10.7

¹⁾ NSI data

3. Deaths in 2022¹⁾

<i>Regions</i>	<i>Total</i>	<i>Urban</i>	<i>Rural</i>	<i>Total</i>	<i>Urban</i>	<i>Rural</i>
	Number			Per 1000 population		
Total	118 814	76 261	42 553	18.4	16.0	24.9
Blagoevgrad	4 559	2 493	2 066	15.8	14.5	17.7
Burgas	6 341	4 457	1 884	16.7	15.4	21.0
Varna	6 954	5 362	1 592	16.1	14.8	23.3
V. Tarnovo	4 352	2 495	1 857	21.2	17.5	29.8
Vidin	2 050	942	1 108	27.9	20.2	41.3
Vratca	3 386	1 575	1 811	22.6	17.6	30.0
Gabrovo	2 411	1 715	696	24.9	22.3	35.3
Dobrich	3 135	1 970	1 165	21.2	18.7	27.2
Kardzhali	2 437	855	1 582	17.2	14.4	19.2
Kyustendil	2 671	1 598	1 073	24.4	21.3	31.1
Lovech	2 668	1 388	1 280	23.4	19.7	29.3
Montana	2 876	1 473	1 403	24.6	19.6	33.4
Pazardzhik	4 380	2 552	1 828	19.3	18.3	20.9
Pernik	2 662	1 765	897	23.7	20.0	36.7
Pleven	4 900	2 713	2 187	22.1	18.1	30.2
Plovdiv	10 783	7 210	3 573	17.1	15.4	22.0
Razgrad	2 138	918	1 220	21.0	18.9	23.0
Ruse	4 214	2 788	1 426	22.1	18.8	33.4
Silistra	2 111	898	1 213	21.9	20.8	22.8
Sliven	3 098	1 813	1 285	18.1	16.2	21.7
Smolyan	1 857	903	954	19.7	16.7	23.7
Sofia-capital	17 104	16 127	977	13.4	13.3	15.5
Sofia	4 545	2 309	2 236	19.9	16.8	24.5
St. Zagora	5 716	3 503	2 213	19.5	16.8	26.1
Targovishte	1 995	927	1 068	20.7	17.1	25.2
Haskovo	4 237	2 625	1 612	20.3	17.4	27.8
Shumen	2 964	1 645	1 319	19.8	17.5	23.5
Yambol	2 270	1 242	1 028	21.0	16.4	31.8

¹⁾ NSI data

4. Natural Growth of Population in 2022¹⁾

Regions	Total	Urban	Rural	Total	Urban	Rural
	Number			Per 1000 population		
Total	-62 218	-34 275	-27 943	-9.6	-7.2	-16.4
Blagoevgrad	-2 150	-977	-1 173	-7.5	-5.7	-10.0
Burgas	-3 120	-2 069	-1 051	-8.2	-7.1	-11.7
Varna	-2 974	-2 063	-911	-6.9	-5.7	-13.3
V. Tarnovo	-2 778	-1 398	-1 380	-13.5	-9.8	-22.1
Vidin	-1 550	-616	-934	-21.1	-13.2	-34.8
Vratca	-2 151	-878	-1 273	-14.4	-9.8	-21.1
Gabrovo	-1 726	-1 187	-539	-17.8	-15.4	-27.3
Dobrich	-2 053	-1 219	-834	-13.9	-11.6	-19.5
Kardzhali	-1 339	-348	-991	-9.4	-5.9	-12.0
Kyustendil	-1 858	-968	-890	-17.0	-12.9	-25.8
Lovech	-1 667	-787	-880	-14.6	-11.2	-20.1
Montana	-1 986	-924	-1 062	-17.0	-12.3	-25.3
Pazardzhik	-2 376	-1 305	-1 071	-10.5	-9.3	-12.3
Pernik	-1 884	-1 103	-781	-16.8	-12.5	-32.0
Pleven	-3 062	-1 588	-1 474	-13.8	-10.6	-20.4
Plovdiv	-4 676	-2 595	-2 081	-7.4	-5.6	-12.8
Razgrad	-1 366	-567	-799	-13.4	-11.7	-15.1
Ruse	-2 871	-1 731	-1 140	-15.1	-11.7	-26.7
Silistra	-1 339	-597	-742	-13.9	-13.8	-13.9
Sliven	-1 007	-618	-389	-5.9	-5.5	-6.6
Smolyan	-1 375	-591	-784	-14.6	-10.9	-19.5
Sofia-capital	-4 326	-3 877	-449	-3.4	-3.2	-7.1
Sofia	-2 527	-1 004	-1 523	-11.1	-7.3	-16.7
St. Zagora	-3 268	-1 816	-1 452	-11.1	-8.7	-17.1
Targovishte	-1 194	-483	-711	-12.4	-8.9	-16.8
Haskovo	-2 610	-1 478	-1 132	-12.5	-9.8	-19.5
Shumen	-1 749	-934	-815	-11.7	-9.9	-14.5
Yambol	-1 236	-554	-682	-11.4	-7.3	-21.1

¹⁾ NSI data

5. Infant Mortality in 2022¹⁾

<i>Regions</i>	<i>Total</i>	<i>Urban</i>	<i>Rural</i>	<i>Total</i>	<i>Urban</i>	<i>Rural</i>
	Number			Per 1000 live births		
Total	274	166	108	4.8	4.0	7.4
Blagoevgrad	7	3	4	2.9	2.0	4.5
Burgas	24	20	4	7.5	8.4	4.8
Varna	10	8	2	2.5	2.4	2.9
V. Tarnovo	10	6	4	6.4	5.5	8.4
Vidin	3	1	2	6.0	3.1	11.5
Vratca	12	4	8	9.7	5.7	14.9
Gabrovo	1	1	-	1.5	1.9	-
Dobrich	11	8	3	10.2	10.7	9.1
Kardzhali	1	-	1	0.9	-	1.7
Kyustendil	2	2	-	2.5	3.2	-
Lovech	7	4	3	7.0	6.7	7.5
Montana	5	4	1	5.6	7.3	2.9
Pazardzhik	13	7	6	6.5	5.6	7.9
Pernik	1	1	-	1.3	1.5	-
Pleven	13	8	5	7.1	7.1	7.0
Plovdiv	33	19	14	5.4	4.1	9.4
Razgrad	5	-	5	6.5	-	11.9
Ruse	11	10	1	8.2	9.5	3.5
Silistra	4	1	3	5.2	3.3	6.4
Sliven	17	2	15	8.1	1.7	16.7
Smolyan	1	1	-	2.1	3.2	-
Sofia-capital	32	30	2	2.5	2.4	3.8
Sofia	3	3	-	1.5	2.3	-
St. Zagora	19	10	9	7.8	5.9	11.8
Targovishte	6	2	4	7.5	4.5	11.2
Haskovo	8	3	5	4.9	2.6	10.4
Shumen	3	1	2	2.5	1.4	4.0
Yambol	12	7	5	11.6	10.2	14.5

¹⁾ NSI data

6. Registered Cases of Certain Infectious Diseases Subject to Obligatory Reporting in 2022

(per 100 000 population)

<i>Regions</i>	<i>Scarlet fever</i>	<i>Pertussis</i>	<i>Chicken pox</i>	<i>Mumps</i>	<i>Lyme disease</i>
Total	16.5	0.3	411.3	0.2	1.3
Blagoevgrad	3.5	-	189.1	0.3	2.1
Burgas	34.6	-	303.8	-	2.4
Varna	16.7	-	746.4	-	0.2
V. Tarnovo	5.8	-	283.1	0.5	2.4
Vidin	4.1	2.7	551.1	-	-
Vratca	3.3	-	152.0	0.7	1.3
Gabrovo	11.4	-	153.1	-	3.1
Dobrich	20.9	-	409.2	-	3.4
Kardzhali	7.1	-	386.9	-	-
Kyustendil	15.5	-	227.4	0.9	-
Lovech	5.3	-	344.9	-	1.8
Montana	9.4	0.9	134.0	0.9	8.5
Pazardzhik	1.8	-	50.7	-	1.3
Pernik	24.0	0.9	727.0	-	-
Pleven	6.3	-	437.1	-	-
Plovdiv	21.8	-	470.8	-	3.0
Razgrad	-	-	234.3	-	4.9
Ruse	14.7	0.5	723.2	0.5	1.0
Silistra	2.1	-	190.2	-	1.0
Sliven	5.8	-	407.5	-	0.6
Smolyan	9.5	-	200.5	1.1	2.1
Sofia-capital	30.0	0.9	500.5	0.4	0.1
Sofia	7.9	0.4	132.4	0.4	0.4
St. Zagora	9.9	-	419.6	0.7	2.0
Targovishte	13.5	-	579.7	-	-
Haskovo	8.6	-	519.4	-	-
Shumen	4.0	-	522.6	-	2.0
Yambol	46.3	-	406.4	-	-

6. Registered Cases of Certain Infectious Diseases Subject to Obligatory Reporting in 2022

(per 100 000 population)

<i>Regions</i>	<i>Shigellosis</i>	<i>Viral hepatitis</i>	<i>Meningitis and meningoencephalitis</i>	
			<i>bacterial</i>	<i>viral</i>
Total	0.8	9.8	0.8	0.8
Blagoevgrad	4.5	11.4	-	-
Burgas	0.5	6.3	1.1	1.3
Varna	2.3	7.7	1.9	0.2
V. Tarnovo	-	4.9	2.4	1.5
Vidin	-	9.5	-	-
Vratca	-	5.3	0.7	0.7
Gabrovo	-	2.1	-	2.1
Dobrich	-	4.7	-	-
Kardzhali	-	0.7	-	-
Kyustendil	1.8	4.6	-	-
Lovech	0.9	11.4	-	-
Montana	-	63.2	-	2.6
Pazardzhik	0.4	0.9	-	-
Pernik	-	19.6	-	-
Pleven	0.5	5.0	1.8	0.5
Plovdiv	0.3	12.2	1.9	1.1
Razgrad	-	7.9	-	-
Ruse	-	2.1	0.5	-
Silistra	11.4	6.2	1.0	-
Sliven	-	18.7	1.2	1.8
Smolyan	-	9.5	-	-
Sofia-capital	0.3	3.8	-	0.3
Sofia	-	3.1	-	0.4
St. Zagora	0.7	34.5	1.4	4.8
Targovishte	-	14.5	2.1	-
Haskovo	0.5	26.3	2.9	3.4
Shumen	0.7	4.0	0.7	-
Yambol	1.9	13.0	0.9	1.9

7. Diseases of Active Tuberculosis diseases in 2022

<i>Regions</i>	<i>New cases and relapses</i>	
	<i>number</i>	<i>per 100 000 population</i>
Total	772	11.9
Blagoevgrad	52	18.0
Burgas	41	10.8
Varna	39	9.0
V. Tarnovo	29	14.1
Vidin	16	21.8
Vratca	34	22.7
Gabrovo	12	12.4
Dobrich	17	11.5
Kardzhali	2	1.4
Kyustendil	8	7.3
Lovech	22	19.3
Montana	28	23.9
Pazardzhik	35	15.4
Pernik	8	7.1
Pleven	22	9.9
Plovdiv	103	16.3
Razgrad	12	11.8
Ruse	17	8.9
Silistra	11	11.4
Sliven	27	15.8
Smolyan	12	12.7
Sofia-capital	87	6.8
Sofia	31	13.5
St. Zagora	34	11.6
Targovishte	12	12.4
Haskovo	31	14.8
Shumen	15	10.0
Yambol	15	13.9

8. Diseases of Malignant Neoplasms in 2022 – New Cases

<i>Regions</i>	<i>Number</i>	<i>Per 100 000 population</i>
Total	26 235	405.8
Blagoevgrad	838	289.8
Burgas	1 530	403.9
Varna	2 029	470.7
V. Tarnovo	903	440.0
Vidin	177	240.8
Vratca	625	416.8
Gabrovo	283	292.7
Dobrich	528	356.5
Kardzhali	780	550.6
Kyustendil	253	231.0
Lovech	399	349.2
Montana	340	290.2
Pazardzhik	707	311.6
Pernik	342	304.0
Pleven	1 141	514.1
Plovdiv	2 801	443.5
Razgrad	327	322.0
Ruse	1 159	606.9
Silistra	368	382.5
Sliven	597	349.0
Smolyan	346	367.1
Sofia-capital	5 456	427.1
Sofia	427	186.6
St. Zagora	1 290	440.0
Targovishte	384	397.5
Haskovo	1 047	501.2
Shumen	723	481.9
Yambol	435	402.7

9. Hospitalized Patients (discharged and deceased) in Hospitals in 2022

<i>Regions</i>	<i>Number</i>	<i>Per 100 000 population</i>
Total	2 197 743	33 994.0
Blagoevgrad	67 328	23 281.7
Burgas	147 480	38 932.5
Varna	118 259	27 436.7
V. Tarnovo	47 106	22 954.6
Vidin	10 602	14 425.3
Vratca	47 775	31 860.2
Gabrovo	24 978	25 835.2
Dobrich	23 032	15 551.0
Kardzhali	22 017	15 543.1
Kyustendil	30 977	28 288.7
Lovech	19 499	17 066.8
Montana	37 483	31 997.9
Pazardzhik	88 627	39 057.0
Pernik	10 938	9 721.4
Pleven	105 047	47 333.8
Plovdiv	368 217	58 295.6
Razgrad	14 495	14 271.2
Ruse	76 609	40 116.1
Silistra	21 063	21 890.5
Sliven	40 901	23 913.3
Smolyan	33 727	35 783.5
Sofia-capital	588 970	46 105.6
Sofia	64 181	28 040.7
St. Zagora	79 028	26 957.2
Targovishte	21 871	22 638.4
Haskovo	42 482	20 335.9
Shumen	28 422	18 945.2
Yambol	16 629	15 394.9

10. Hospitalized Patients (discharged and deceased) in Hospitals of ICD-10 I-XIX by residence in 2022

Regions	Hospitalized patients in region – total (number)	incl.: hospitalized patients from other regions	
		<i>number</i>	<i>percentage</i>
Blagoevgrad	52 730	3 756	7.1
Burgas	87 911	10 816	12.3
Varna	95 211	28 358	29.8
V. Tarnovo	35 087	3 722	10.6
Vidin	10 361	410	4.0
Vratca	39 363	5 618	14.3
Gabrovo	22 523	3 167	14.1
Dobrich	17 158	860	5.0
Kardzhali	21 055	1 669	7.9
Kyustendil	20 351	1 361	6.7
Lovech	19 112	2 108	11.0
Montana	29 147	4 476	15.4
Pazardzhik	73 972	15 275	20.6
Pernik	10 624	724	6.8
Pleven	91 564	33 361	36.4
Plovdiv	287 977	72 728	25.3
Razgrad	14 189	1 101	7.8
Ruse	68 975	17 352	25.2
Silistra	20 475	1 957	9.6
Sliven	37 915	4 686	12.4
Smolyan	18 747	1 169	6.2
Sofia-capital	502 589	187 388	37.3
Sofia	54 802	26 294	48.0
St. Zagora	63 271	14 199	22.4
Targovishte	21 070	5 138	24.4
Haskovo	37 244	2 099	5.6
Shumen	22 151	3 022	13.6
Yambol	16 334	1 816	11.1

11. Beds in Hospitals on 31.XII.2022

<i>Regions</i>	<i>Number</i>	<i>Per 10 000 population</i>
Total¹⁾	52 462	81.4
Blagoevgrad	1 612	55.9
Burgas	2 938	77.6
Varna	2 732	63.4
V. Tarnovo	1 293	63.4
Vidin	335	46.0
Vratca	1 002	67.3
Gabrovo	905	94.3
Dobrich	736	50.0
Kardzhali	786	55.2
Kyustendil	988	90.9
Lovech	1 011	89.2
Montana	994	85.6
Pazardzhik	2 065	91.3
Pernik	447	40.0
Pleven	2 610	118.5
Plovdiv	6 309	99.9
Razgrad	528	52.2
Ruse	1 700	89.7
Silistra	483	50.5
Sliven	995	58.3
Smolyan	1 020	109.3
Sofia-capital	10 667	83.3
Sofia	1 663	73.1
St. Zagora	2 241	76.8
Targovishte	625	65.0
Haskovo	1 013	48.8
Shumen	650	43.4
Yambol	452	42.1

¹⁾ Beds belonging to other administrations are included, but not allocated by regions.

12. Beds¹⁾ in Hospitals and Other Healthcare Establishments on 31.XII.2022 by Type²⁾

Regions	Total	incl.:				Psychiatric beds
		Beds for active and intensive care	Beds for rehabilitation	Beds for continuing care	Other beds	
Number						
Total	51 045	41 456	7 100	2 489	-	3 951
Blagoevgrad	1 692	1 261	385	46	-	84
Burgas	3 226	1 974	1 144	108	-	132
Varna	2 732	2 350	370	12	-	165
V. Tarnovo	1 569	1 146	322	101	-	200
Vidin	335	295	25	15	-	30
Vratca	1 197	913	125	159	-	40
Gabrovo	905	689	28	188	-	108
Dobrich	826	593	201	32	-	175
Kardzhali	786	715	20	51	-	230
Kyustendil	988	625	357	6	-	38
Lovech	1 011	982	13	16	-	415
Montana	994	834	160	-	-	63
Pazardzhik	2 065	1 725	182	158	-	100
Pernik	447	381	50	16	-	25
Pleven	2 610	2 211	119	280	-	115
Plovdiv	6 754	5 798	894	62	-	255
Razgrad	528	482	26	20	-	40
Ruse	1 966	1 748	167	51	-	385
Silistra	483	449	17	17	-	15
Sliven	995	899	86	10	-	20
Smolyan	1 060	568	465	27	-	40
Sofia-capital	10 712	8 990	1 209	513	-	343
Sofia	1 723	1 387	264	72	-	60
St. Zagora	2 421	1 678	286	457	-	510
Targovishte	625	620	-	5	-	79
Haskovo	1 093	926	125	42	-	80
Shumen	850	802	35	13	-	179
Yambol	452	415	25	12	-	25

¹⁾ Beds belonging to other administrations are not included.

²⁾ According to statistical grouping used by Eurostat.

12. Beds¹⁾ in Hospitals and Other Healthcare Establishments on 31.XII.2022 by Type²⁾

Regions	Total	incl.:				Psychiatric beds
		Beds for active and intensive care	Beds for rehabilitation	Beds for continuing care	Other beds	
Per 10 000 population						
Total	79.2	64.3	11.0	3.9	-	6.1
Blagoevgrad	58.7	43.8	13.3	1.6	-	2.9
Burgas	85.2	52.1	30.2	2.9	-	3.5
Varna	63.4	54.5	8.6	0.3	-	3.8
V. Tarnovo	76.9	56.2	15.7	5.0	-	9.8
Vidin	46.0	40.5	3.4	2.1	-	4.1
Vratca	80.4	61.3	8.4	10.7	-	2.7
Gabrovo	94.3	71.8	2.9	19.6	-	11.3
Dobrich	56.1	40.3	13.6	2.2	-	11.9
Kardzhali	55.2	50.2	1.4	3.6	-	16.1
Kyustendil	90.9	57.5	32.8	0.6	-	3.5
Lovech	89.2	86.6	1.2	1.4	-	36.6
Montana	85.6	71.8	13.8	-	-	5.4
Pazardzhik	91.3	76.3	8.0	7.0	-	4.4
Pernik	40.0	34.1	4.5	1.4	-	2.2
Pleven	118.5	100.3	5.5	12.7	-	5.2
Plovdiv	106.9	91.8	14.1	1.0	-	4.0
Razgrad	52.2	47.7	2.5	2.0	-	4.0
Ruse	103.7	92.2	8.8	2.7	-	20.3
Silistra	50.5	47.0	1.7	1.8	-	1.6
Sliven	58.3	52.7	5.0	0.6	-	1.2
Smolyan	113.5	60.8	49.8	2.9	-	4.3
Sofia-capital	83.7	70.2	9.5	4.0	-	2.7
Sofia	75.7	60.9	11.6	3.2	-	2.6
St. Zagora	83.0	57.5	9.8	15.7	-	17.5
Targovishte	65.0	64.5	-	0.5	-	8.2
Haskovo	52.7	44.7	6.0	2.0	-	3.9
Shumen	56.8	53.6	2.3	0.9	-	12.0
Yambol	42.1	38.7	2.3	1.1	-	2.3

¹⁾ Beds belonging to other administrations are not included.

²⁾ According to statistical grouping used by Eurostat.

13. Medical Personnel in Health Facilities on 31.XII.2022

Regions	Physicians	Dentists	Auxiliary medical personnel	incl.:		
				Med. assist.	Midwives	Nurses
Number						
Total¹⁾	29 599²⁾	7 602²⁾	44 493	1 733	3 285	28 827
Blagoevgrad	904	322	1 520	79	72	1 111
Burgas	1 505	307	2 275	104	130	1 521
Varna	2 354	672	2 967	49	369	1 635
V. Tarnovo	712	210	1 188	92	38	815
Vidin	272	79	388	65	24	225
Vratca	572	110	1 029	76	81	676
Gabrovo	388	90	701	63	34	433
Dobrich	449	119	699	38	54	444
Kardzhali	373	136	812	66	77	534
Kyustendil	392	109	534	56	39	337
Lovech	436	91	677	57	28	454
Montana	406	80	796	71	63	529
Pazardzhik	917	224	1 295	54	69	892
Pernik	376	144	534	20	27	370
Pleven	1 595	160	2 193	56	214	1 360
Plovdiv	3 490	1 177	4 783	54	322	3 087
Razgrad	302	64	533	52	19	343
Ruse	816	184	1 470	96	166	909
Silistra	291	66	542	41	58	356
Sliven	507	127	924	44	62	608
Smolyan	303	120	617	65	47	372
Sofia-capital	7 163	1 943	9 887	86	836	6 215
Sofia	884	132	1 133	19	58	805
St. Zagora	1 264	297	2 096	73	163	1 386
Targovishte	303	62	611	36	47	389
Haskovo	645	192	1 119	81	89	745
Shumen	504	122	927	56	59	649
Yambol	318	79	574	62	19	361

¹⁾ Personnel belonging to other administrations are included, but not allocated by regions.

²⁾ Incl. individual and group practices personnel, working under contract with the NHIF in more than one district.

13. Medical Personnel in Health Facilities on 31.XII.2022

Regions	Physicians	Dentists	Auxiliary medical personnel	incl.:		
				Med. assist.	Midwives	Nurses
Per 10 000 population						
Total¹⁾	45.9²⁾	11.8²⁾	69.0	2.7	5.1	44.7
Blagoevgrad	31.4	11.2	52.7	2.7	2.5	38.6
Burgas	39.8	8.1	60.1	2.7	3.4	40.2
Varna	54.6	15.6	68.9	1.1	8.6	37.9
V. Tarnovo	34.9	10.3	58.2	4.5	1.9	39.9
Vidin	37.4	10.9	53.3	8.9	3.3	30.9
Vratca	38.4	7.4	69.1	5.1	5.4	45.4
Gabrovo	40.4	9.4	73.1	6.6	3.5	45.1
Dobrich	30.5	8.1	47.5	2.6	3.7	30.2
Kardzhali	26.2	9.5	57.0	4.6	5.4	37.5
Kyustendil	36.1	10.0	49.1	5.2	3.6	31.0
Lovech	38.5	8.0	59.7	5.0	2.5	40.1
Montana	34.9	6.9	68.5	6.1	5.4	45.5
Pazardzhik	40.5	9.9	57.2	2.4	3.1	39.4
Pernik	33.6	12.9	47.8	1.8	2.4	33.1
Pleven	72.4	7.3	99.5	2.5	9.7	61.7
Plovdiv	55.3	18.6	75.7	0.9	5.1	48.9
Razgrad	29.9	6.3	52.7	5.1	1.9	33.9
Ruse	43.0	9.7	77.5	5.1	8.8	47.9
Silistra	30.4	6.9	56.7	4.3	6.1	37.2
Sliven	29.7	7.4	54.2	2.6	3.6	35.6
Smolyan	32.5	12.9	66.1	7.0	5.0	39.8
Sofia-capital	55.9	15.2	77.2	0.7	6.5	48.5
Sofia	38.8	5.8	49.8	0.8	2.5	35.4
St. Zagora	43.3	10.2	71.8	2.5	5.6	47.5
Targovishte	31.5	6.4	63.5	3.7	4.9	40.4
Haskovo	31.1	9.3	53.9	3.9	4.3	35.9
Shumen	33.7	8.2	62.0	3.7	3.9	43.4
Yambol	29.6	7.4	53.5	5.8	1.8	33.6

¹⁾ Personnel belonging to other administrations are included, but not allocated by regions.

²⁾ Incl. individual and group practices personnel, working under contract with the NHIF in more than one district.

14. Age Structure of Physicians (individuals) with Basic Employment Contract as of 31.XII.2022

(percentage)

<i>Regions</i>	<i>Total</i>	<i>to 35 years</i>	<i>35-44 years</i>	<i>45-54 years</i>	<i>55-64 years</i>	<i>65-74 years</i>	<i>75+ years</i>
Total^{1), 2)}	100.0	17.5	10.6	18.0	33.8	16.2	3.9
Blagoevgrad	100.0	10.4	8.8	12.9	42.7	21.4	3.8
Burgas	100.0	18.9	10.8	20.1	32.2	14.6	3.4
Varna	100.0	24.0	13.7	17.6	26.4	15.1	3.2
V. Tarnovo	100.0	8.3	4.5	14.2	48.5	20.9	3.6
Vidin	100.0	0.7	3.7	16.5	46.0	28.3	4.8
Vratca	100.0	6.6	4.6	17.8	42.7	20.6	7.7
Gabrovo	100.0	5.7	2.8	15.2	44.1	25.8	6.4
Dobrich	100.0	10.5	8.2	19.2	41.4	17.4	3.3
Kardzhali	100.0	9.1	15.0	22.0	30.6	16.6	6.7
Kyustendil	100.0	6.6	3.8	13.5	53.1	17.1	5.9
Lovech	100.0	2.1	1.8	11.9	52.1	27.1	5.0
Montana	100.0	2.5	4.0	17.7	51.7	18.2	5.9
Pazardzhik	100.0	14.5	8.2	19.2	35.8	16.1	6.2
Pernik	100.0	7.4	3.2	16.2	49.5	20.5	3.2
Pleven	100.0	23.6	10.3	18.4	32.0	13.4	2.3
Plovdiv	100.0	23.4	14.0	18.6	28.2	11.5	4.3
Razgrad	100.0	10.6	10.3	19.5	33.4	17.6	8.6
Ruse	100.0	15.9	11.3	19.1	35.0	15.0	3.7
Silistra	100.0	8.9	6.5	17.9	35.4	17.2	14.1
Sliven	100.0	12.0	6.3	18.7	36.3	22.9	3.8
Smolyan	100.0	6.6	8.2	14.2	40.9	23.8	6.3
Sofia-capital	100.0	24.0	13.7	17.4	27.1	15.2	2.6
Sofia	100.0	15.9	6.9	16.1	32.4	22.0	6.7
St. Zagora	100.0	13.9	10.5	22.6	40.9	10.4	1.7
Targovishte	100.0	9.2	4.0	20.1	40.9	19.5	6.3
Haskovo	100.0	10.6	5.0	13.3	46.5	19.2	5.4
Shumen	100.0	11.3	5.9	16.3	42.7	17.9	5.9
Yambol	100.0	6.9	3.5	18.6	40.2	26.1	4.7

¹⁾ Personnel belonging to other administrations are included, but not allocated by regions.

²⁾ Incl. individual and group practices personnel, working under contract with the NHIF in more than one district.

15. Age Structure of healthcare professionals (individuals) with Basic Employment Contract as of 31.XII.2022

(percentage)

<i>Regions</i>	<i>Total</i>	<i>to 35 years</i>	<i>35-44 years</i>	<i>45-54 years</i>	<i>55-64 years</i>	<i>65-74 years</i>	<i>75+ years</i>
Total	100.0	16.8	16.0	31.2	22.0	12.9	1.1
Blagoevgrad	100.0	12.8	20.9	36.0	20.7	6.1	3.5
Burgas	100.0	19.6	16.9	33.6	20.6	8.9	0.4
Varna	100.0	25.6	19.8	28.5	17.7	7.9	0.5
V. Tarnovo	100.0	7.3	13.3	34.1	24.7	18.1	2.5
Vidin	100.0	6.2	8.6	36.4	28.2	17.9	2.7
Vratca	100.0	23.0	19.2	33.4	14.0	9.1	1.3
Gabrovo	100.0	5.8	7.1	31.4	29.5	25.4	0.8
Dobrich	100.0	7.4	10.9	33.6	29.3	15.9	2.9
Kardzhali	100.0	25.0	22.0	30.1	13.2	9.7	-
Kyustendil	100.0	7.5	8.2	18.4	22.9	41.9	1.1
Lovech	100.0	8.6	5.5	28.5	32.4	24.3	0.7
Montana	100.0	18.5	12.8	34.6	21.9	11.7	0.5
Pazardzhik	100.0	16.4	12.4	30.1	22.4	16.6	2.1
Pernik	100.0	5.5	9.9	19.1	24.9	33.6	7.0
Pleven	100.0	29.2	14.8	24.6	18.8	12.0	0.6
Plovdiv	100.0	22.3	20.3	29.0	16.6	11.0	0.8
Razgrad	100.0	16.1	10.1	30.9	25.8	13.8	3.3
Ruse	100.0	21.9	15.1	32.4	18.6	11.1	0.9
Silistra	100.0	19.3	12.1	32.5	20.1	14.2	1.8
Sliven	100.0	11.8	12.6	29.4	31.3	13.8	1.1
Smolyan	100.0	10.4	11.1	28.0	23.4	24.5	2.6
Sofia-capital	100.0	13.5	16.3	33.3	24.8	11.2	0.9
Sofia	100.0	5.4	10.9	32.2	28.9	20.9	1.7
St. Zagora	100.0	17.1	17.3	32.8	21.1	11.1	0.6
Targovishte	100.0	19.6	15.7	33.4	17.5	13.2	0.6
Haskovo	100.0	14.0	21.8	30.5	20.8	11.9	1.0
Shumen	100.0	18.0	13.1	34.2	20.9	11.9	1.9
Yambol	100.0	5.7	8.0	28.9	27.5	28.7	1.2

**16. Age Structure of Nurses (individuals)
with Basic Employment Contract as of 31.XII.2022**

(percentage)

<i>Regions</i>	<i>Total</i>	<i>to 35 years</i>	<i>35-44 years</i>	<i>45-54 years</i>	<i>55-64 years</i>	<i>65-74 years</i>	<i>75+ years</i>
Total	100.0	12.6	15.2	33.0	24.0	14.1	1.1
Blagoevgrad	100.0	9.4	24.8	35.9	21.1	4.8	4.0
Burgas	100.0	16.5	16.0	38.6	20.5	8.1	0.3
Varna	100.0	20.1	18.2	32.4	19.9	8.9	0.5
V. Tarnovo	100.0	4.5	11.7	36.5	24.9	20.6	1.8
Vidin	100.0	5.6	8.6	39.1	27.4	18.3	1.0
Vratca	100.0	23.1	20.3	35.4	12.6	7.9	0.7
Gabrovo	100.0	2.4	7.1	31.5	30.3	28.4	0.3
Dobrich	100.0	4.4	7.5	35.1	33.2	17.3	2.5
Kardzhali	100.0	19.7	22.8	33.2	13.0	11.3	-
Kyustendil	100.0	4.2	5.0	15.6	23.1	50.4	1.7
Lovech	100.0	5.3	5.3	30.0	31.6	27.0	0.8
Montana	100.0	14.9	14.7	37.5	20.8	11.9	0.2
Pazardzhik	100.0	11.5	10.8	33.1	25.3	17.2	2.1
Pernik	100.0	0.5	6.3	15.0	27.7	40.8	9.7
Pleven	100.0	21.5	14.2	27.9	21.1	14.7	0.6
Plovdiv	100.0	18.0	20.9	29.2	19.3	11.7	0.9
Razgrad	100.0	13.4	10.5	32.4	27.5	14.4	1.8
Ruse	100.0	19.4	13.1	35.6	18.3	12.6	1.0
Silistra	100.0	14.5	13.7	33.2	23.2	14.1	1.3
Sliven	100.0	6.1	13.5	33.0	32.6	13.7	1.1
Smolyan	100.0	5.6	10.2	26.4	21.5	33.8	2.5
Sofia-capital	100.0	9.1	14.4	34.8	29.2	11.8	0.7
Sofia	100.0	3.1	9.2	33.2	31.5	22.0	1.0
St. Zagora	100.0	12.3	16.5	34.7	22.0	14.0	0.5
Targovishte	100.0	16.0	16.6	35.1	19.4	12.0	0.9
Haskovo	100.0	12.9	23.0	30.0	19.9	13.1	1.1
Shumen	100.0	14.1	12.2	35.6	23.0	13.5	1.6
Yambol	100.0	3.4	9.9	28.1	27.0	31.2	0.4

17. Persons Served¹⁾ by the Centers for Urgent Medical Care and Urgent Wards in 2022

(number)

<i>Regions</i>	<i>Total</i>	<i>Centers for urgent medical care</i>		<i>Urgent wards</i>
		<i>Total</i>	<i>incl. at calls performed</i>	
Total	2 399 805	1 093 021	674 353	1 306 784
Blagoevgrad	77 123	55 083	20 924	22 040
Burgas	141 253	74 901	55 700	66 352
Varna	160 962	55 120	44 117	105 842
V. Tarnovo	70 238	44 047	18 385	26 191
Vidin	31 829	12 630	7 752	19 199
Vratca	50 471	33 515	21 372	16 956
Gabrovo	44 362	23 205	10 385	21 157
Dobrich	61 260	29 003	14 496	32 257
Kardzhali	66 957	41 944	19 102	25 013
Kyustendil	54 462	30 154	15 570	24 308
Lovech	51 479	40 780	29 998	10 699
Montana	42 658	29 435	12 455	13 223
Pazardzhik	83 442	33 701	19 393	49 741
Pernik	54 400	24 518	14 886	29 882
Pleven	60 949	34 320	22 468	26 629
Plovdiv	243 418	69 720	50 239	173 698
Razgrad	33 556	17 799	10 060	15 757
Ruse	59 543	26 398	19 170	33 145
Silistra	38 130	22 195	9 645	15 935
Sliven	43 428	24 047	17 318	19 381
Smolyan	33 405	21 916	21 569	11 489
Sofia-capital	582 870	190 983	135 435	391 887
Sofia	47 078	-	-	47 078
St. Zagora	72 146	40 364	25 278	31 782
Targovishte	27 865	12 989	5 492	14 876
Haskovo	77 876	54 787	23 630	23 089
Shumen	50 618	24 265	13 212	26 353
Yambol	38 027	25 202	16 302	12 825

¹⁾ excl. ambulance transportation.

18. Childbirth care at inpatient healthcare facilities during 2022

Regions	Women in childbirth served	Newborn live births			
		number	per 100 live births	incl. with low weight	
				number	per 100 deaths
Total	52 467	112	0.2	90	80.4
Blagoevgrad	1 732	-	-	-	-
Burgas	2 806	9	0.3	6	66.7
Varna	4 376	8	0.2	8	100.0
V. Tarnovo	1 200	-	-	-	-
Vidin	161	-	-	-	-
Vratca	703	-	-	-	-
Gabrovo	436	-	-	-	-
Dobrich	782	-	-	-	-
Kardzhali	604	-	-	-	-
Kyustendil	482	-	-	-	-
Lovech	437	-	-	-	-
Montana	1 004	2	0.2	-	-
Pazardzhik	1 547	6	0.4	6	100.0
Pernik	332	-	-	-	-
Pleven	2 364	6	0.2	4	66.7
Plovdiv	7 052	21	0.3	17	81.0
Razgrad	202	1	0.5	1	100.0
Ruse	1 411	7	0.5	6	85.7
Silistra	822	1	0.1	1	100.0
Sliven	2 357	8	0.3	3	37.5
Smolyan	328	-	-	-	-
Sofia-capital	15 029	26	0.2	25	96.2
Sofia	1 097	-	-	-	-
St. Zagora	2 528	10	0.4	8	80.0
Targovishte	655	3	0.5	3	100.0
Haskovo	1 044	3	0.3	2	66.7
Shumen	774	1	0.1	-	-
Yambol	202	-	-	-	-

19. Surgical Patients, Discharged from Hospitals in 2022

<i>Regions</i>	<i>Discharged surgical patients</i>	<i>Surgical patients with complications (percentage)</i>	<i>Lethality (percentage)</i>
Total	615 269	0.4	0.7
Blagoevgrad	14 066	0.5	0.6
Burgas	34 261	0.4	0.8
Varna	34 108	0.7	0.7
V. Tarnovo	8 228	0.1	0.6
Vidin	2 222	0.1	0.9
Vratca	9 981	0.2	0.5
Gabrovo	5 664	0.1	0.7
Dobrich	4 001	0.2	0.9
Kardzhali	4 825	0.4	0.9
Kyustendil	4 706	0.6	1.0
Lovech	3 786	0.2	0.6
Montana	9 568	0.4	1.3
Pazardzhik	22 599	0.2	0.5
Pernik	2 067	0.2	1.4
Pleven	35 147	0.2	0.6
Plovdiv	102 557	0.6	0.5
Razgrad	2 553	0.7	1.1
Ruse	32 670	0.7	0.8
Silistra	5 249	0.2	0.6
Sliven	10 769	0.1	1.0
Smolyan	4 131	0.3	0.3
Sofia-capital	195 715	0.5	0.5
Sofia	17 745	0.4	1.8
St. Zagora	20 390	0.3	1.1
Targovishte	7 882	0.0	0.4
Haskovo	9 579	0.0	0.4
Shumen	6 726	0.3	0.7
Yambol	4 074	0.2	0.5

VIII. INTERNATIONAL REVIEW

1. Birth Rate, Death Rate and Natural Growth

(per 1000 population)

Countries	Year	Birth rate	Death rate	Natural growth	Countries	Year	Birth rate	Death rate	Natural growth
Austria	2010	9.4	9.2	0.2	Romania	2010	10.5	12.8	-2.3
	2015	9.8	9.6	0.2		2015	10.2	13.2	-3.1
	2018	9.7	9.5	0.2		2018	10.8	13.6	-3.1
	2019	9.6	9.4	0.2		2019	10.3	13.4	-3.1
	2020	9.4	10.3	-0.9		2020	10.3	15.5	-6.2
	2021	9.6	10.3	-0.7		2021	10.1	17.5	-7.4
	2022	9.1	10.3	-1.2		2022	9.6	14.3	-4.7
Belgium	2010	11.9	9.7	2.3	Slovenia	2010	10.9	9.1	1.8
	2015	10.8	9.8	1.0		2015	10.0	9.6	0.4
	2018	10.4	9.7	0.7		2018	9.4	9.9	-0.4
	2019	10.2	9.5	0.8		2019	9.3	9.9	-0.6
	2020	9.9	11.0	-1.1		2020	8.9	11.4	-2.5
	2021	10.2	9.7	0.5		2021	9.0	11.0	-2.0
	2022	9.8	10.0	-0.2		2022	8.3	10.6	-2.3
Bulgaria	2010	10.2	14.9	-4.7	Hungary	2010	9.0	13.0	-4.0
	2015	9.2	15.3	-6.2		2015	9.4	13.4	-4.0
	2018	8.9	15.4	-6.6		2018	9.6	13.4	-3.9
	2019	8.8	15.5	-6.7		2019	9.5	13.3	-3.8
	2020	8.5	18.0	-9.5		2020	9.6	14.5	-4.9
	2021	8.5	21.7	-13.2		2021	9.7	16.1	-6.4
	2022	8.8	18.4	-9.6		2022	9.3	14.2	-4.9
Germany	2010	8.3	10.5	-2.2	France	2010	12.9	8.5	4.4
	2015	9.0	11.3	-2.3		2015	12.0	8.9	3.1
	2018	9.5	11.5	-2.0		2018	11.3	9.1	2.2
	2019	9.4	11.3	-1.9		2019	11.2	9.1	2.1
	2020	9.3	11.9	-2.6		2020	10.9	9.9	1.0
	2021	9.6	12.3	-2.7		2021	11.0	9.8	1.2
	2022	8.8	12.7	-3.9		2022	10.6	9.8	0.8
Estonia	2010	11.9	11.9	0.0	European Union	2010	10.4	9.9	0.6
	2015	10.6	11.6	-1.0		2015	9.7	10.4	-0.7
	2018	10.9	11.9	-1.0		2018	9.5	10.5	-1.0
	2019	10.6	11.6	-1.0		2019	9.3	10.4	-1.1
	2020	9.9	11.9	-2.0		2020	9.1	11.6	-2.5
	2021	10.0	14.0	-4.0		2021	9.1	11.9	-2.8
	2022	8.6	12.8	-4.2		2022	8.7	11.5	-2.8

2. Infant Mortality Rate

(per 1000 live births)

<i>Countries</i>	1980	2010	2015	2017	2018	2019	2020	2021
Austria	14.3	3.9	3.1	2.9	2.7	2.9	3.1	2.7
Belgium	12.1	3.6	3.3	3.6	3.8	3.7	3.3	2.9
Bulgaria	20.2	9.4	6.6	6.4	5.8	5.6	5.1	5.6
Croatia	20.6	4.4	4.1	4.0	4.2	4.0	4.0	3.8
Cyprus	14.4	3.2	2.7	1.3	2.4	2.6	2.1	2.7
Czech Republic	16.9	2.7	2.5	2.7	2.6	2.6	2.3	2.2
Denmark	8.4	3.4	3.7	3.8	3.7	3.0	3.2	3.1
Estonia	17.1	3.3	2.5	2.3	1.6	1.6	1.4	2.2
Finland	7.6	2.3	1.7	2.0	2.1	2.1	1.8	1.8
France	...	3.6	3.7	3.9	3.8	3.8	3.6	3.7
Germany	12.4	3.4	3.3	3.3	3.2	3.2	3.1	3.0
Greece	17.9	3.8	4.0	3.5	3.5	3.7	3.2	3.5
Hungary	23.2	5.3	4.2	3.5	3.3	3.6	3.4	3.3
Ireland	11.1	3.6	3.4	3.0	2.9	2.8	3.0	3.2
Italy	14.6	3.0	2.9	2.7	2.8	2.4	2.4	2.3
Latvia	15.3	5.6	4.1	4.1	3.2	3.4	3.5	2.7
Lithuania	14.5	5.0	4.2	3.0	3.4	3.3	2.8	3.1
Luxembourg	11.5	3.4	2.8	3.2	4.3	4.7	4.5	3.1
Malta	15.2	5.6	5.8	6.7	5.6	6.7	3.9	3.9
Netherlands	8.6	3.8	3.3	3.6	3.5	3.6	3.8	3.3
Poland	25.4	5.0	4.0	4.0	3.8	3.8	3.6	3.9
Portugal	24.3	2.5	2.9	2.7	3.3	2.8	2.4	2.4
Romania	29.3	9.8	7.5	6.5	6.0	5.8	5.6	5.2
Slovakia	20.9	5.7	5.1	4.5	5.0	5.1	5.1	4.9
Slovenia	15.3	2.5	1.6	2.1	1.7	2.1	2.2	1.8
Spain	12.3	3.2	2.7	2.7	2.7	2.6	2.6	2.5
Sweden	6.9	2.5	2.5	2.4	2.0	2.1	2.4	1.8
European Union	15.9	4.0	3.6	3.5	3.4	3.4	3.3	3.2

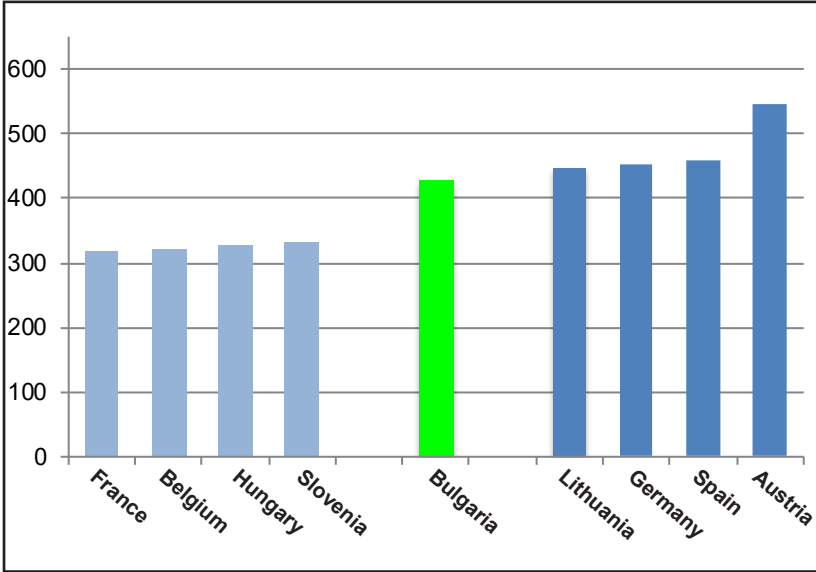
3. Medical Personnel and Hospital Beds

(per 100 000 population)

<i>Countries</i>	<i>Years</i>	<i>Physicians</i>	<i>Years</i>	<i>Beds</i>
Austria	2021	545.3	2021	691.5
Belgium	2020	321.3	2022	547.2
Bulgaria	2020	427.7	2021	792.3
Croatia	2021	360.0	2021	567.5
Cyprus	2019	427.2	2021	312.4
Czech Republic	2020	409.5	2021	665.5
Denmark	2019	425.1	2021	251.3
Estonia	2020	347.9	2021	439.4
Finland	2018	348.0	2020	282.6
France	2020	318.1	2021	564.8
Germany	2021	453.2	2021	776.0
Greece	2021	426.7
Hungary	2021	328.4	2021	678.6
Ireland	2021	404.6	2021	289.4
Italy	2021	412.5	2021	312.4
Latvia	2020	333.9	2021	516.4
Lithuania	2020	448.3	2021	605.4
Luxembourg	2017	298.5	2021	414.3
Malta	2020	418.8	2021	414.4
Netherlands	2020	383.4	2021	295.2
Poland	2017	237.8	2021	627.2
Portugal	2021	351.1
Romania	2020	333.0	2021	720.6
Slovakia	2021	567.5
Slovenia	2020	330.3	2021	424.9
Spain	2020	457.7	2021	296.1
Sweden	2019	428.5	2021	200.1
European Union	-	-	2021	524.8

Physicians

(per 100 000 population)



Hospital Beds

(per 100 000 population)

