



MINISTRY OF HEALTH



NATIONAL CENTER OF PUBLIC HEALTH AND ANALYSES

PUBLIC HEALTH STATISTICS

■ Annual, 2021

■ ■ ■ ■ ■ ■ ■ ■ ■ ■ Sofia, 2021 ■ ■ ■ ■ ■ ■ ■ ■ ■ ■

PUBLIC HEALTH STATISTICS, Bulgaria 2021, Annual

ISSN 1310–2931

Editors assoc. prof. Christian Griva, assoc. prof. Hristo Hinkov,
assoc. prof. Krasimira Dikova

Published by *National center of public health and analyses*
Sofia, 2021

Printed by *National center of public health and analyses*
Circulatuion 50

CONTENTS

I. POPULATION AND VITAL STATISTICS

1. Population on 31.XII.	7
2. Population by age on 31.XII.2020	8
3. Age structure of the population	9
4. Live births, deaths and natural growth	10
5. Births and abortions	12
6. Age specific fertility rates.....	12
7. Premature newborns for 2020.....	13
8. Infant mortality.....	14
9. Perinatal, neonatal and postneonatal infant mortality	14
10. Stillbirths and infant deaths under 1 year	17
11. Mortality by age groups.....	18
12. Life expectancy in the Republic of Bulgaria	18

II. MORBIDITY AND MORTALITY BY CAUSES

1. Registered cases of certain infectious diseases subject to obligatory reporting.....	19
2. Registered cases of active tuberculosis	20
3. Registered new cases of malignant neoplasms	21
4. Registered new cases of malignant neoplasms by localization	23
5. Patients under observation of psychiatric establishments and structures by type of disease on 31.12.	24
6. Hospitalized patients (discharged and deceased) in hospitals by age.....	25
7. Hospitalized patients (discharged and deceased) in hospitals by classes of ICD-10 in 2020	26
8. Hospitalized patients (discharged and deceased) in hospitals 0-17 years of age by classes of ICD-10 in 2020	27
9. Hospitalized patients (discharged and deceased) in hospitals 18-64 years of age by classes of ICD-10 in 2020	28
10. Hospitalized patients (discharged and deceased) in hospitals over 65 years of age by classes of ICD-10 in 2020	29
11. Primary disability of persons over 16 years of age	30
12. Primary disability of persons under 16 years of age	31

13. Primary disability of persons over 16 years of age by class of disease and loss of capacity to work in 2020	32
14. Primary disability of persons under 16 years of age by class of disease and loss of capacity in 2020	33
15. Mortality by causes in 2020	34
16. Premature mortality in 2020	36
17. Premature mortality in 2020 – male	38
18. Premature mortality in 2020 – female	40
III. HEALTH FACILITIES	
1. Health facilities and hospital beds on 31.XII.2020	42
2. Beds in hospitals on 31.XII.2020 by type	44
3. Beds in hospitals and other healthcare establishments on 31.XII.2020 by type	46
IV. MEDICAL PERSONNEL	
1. Medical personnel	47
2. Physicians by speciality	49
V. ACTIVITIES OF THE HEALTH FACILITIES	
1. Activities of the inpatient wards of the hospital health care facilities in 2020	50
2. Utilization, turnover and average length of stay in health care facilities in 2020 by type of beds	52
3. Women in childbirth served at inpatient healthcare facilities	54
4. Abortions performed in health facilities in 2020 by age group and type of abortion	55
5. Abortions performed in health facilities	56
6. Persons served by the centers for urgent medical care and urgent wards.....	56
7. Number and type of surgeries of patients, discharged from hospitals in 2020	57
8. Number and type of surgeries of patients, discharged from hospitals in 2020 by type of healthcare facility	58
VI. ECONOMIC INDICATORS OF THE HEALTH FACILITIES FOR 2020	60

VII. REVIEW BY REGIONS

1. Population on 31.XII.2020	61
2. Live births in 2020	63
3. Deaths in 2020	64
4. Natural growth of population in 2020	65
5. Infant mortality in 2020	66
6. Registered cases of certain infectious diseases subject to obligatory reporting in 2020	67
7. Registered cases of active tuberculosis in 2020	69
8. Registered new cases of malignant neoplasms in 2020	70
9. Patients under observation of psychiatric establishments and structures by type of disease on 31.XII.2020	71
10. Hospitalized patients (discharged and deceased) in hospitals in 2020	73
11. Hospitalized patients (discharged and deceased) in hospitals by residence in 2020	74
12. Primary disability of persons in 2020	75
13. Beds in hospitals on 31.XII.2020	76
14. Beds in hospitals and other healthcare establishments on 31.XII.2020 by type	77
15. Medical personnel in health facilities on 31.XII.2020	79
16. Age structure of physicians (individuals) with basic employment contract as of 31.XII.2020	81
17. Age structure of healthcare professionals (individuals) with basic employment contract as of 31.XII.2020	82
18. Age structure of nurses (individuals) with basic employment contract as of 31.XII.2020	83
19. Persons served by the centers for urgent medical care and urgent wards in 2020	84
20. Childbirth care at inpatient healthcare facilities during 2020	85
21. Surgical patients, discharged from hospitals in 2020	86

VIII. INTERNATIONAL REVIEW

1. Birth rate, death rate and natural growth	87
2. Infant mortality rate.....	88
3. Medical personnel and hospital beds.....	89

Main Health-demographic Indicators for 2020

	Population on 31.12.2020 r.	6 916 548
Age structure of the population:	0-17 years of age	17.2%
	18-64 years of age	61.0%
	over 65 years of age	21.8%
	Crude birth rate	8.5‰
	Crude death rate	18.0‰
	Infant mortality	5.1‰
	Perinatal mortality	7.9‰
	Neonatal mortality	2.8‰
	Post neonatal mortality	2.3‰
Premature mortality:	total	20.5%
	male	26.6%
	female	13.7%
Life expectancy at birth for 2018-2020 years (in years)		74.64
	male	71.11
	female	78.22
	New cases and relapses of active tuberculosis	13.0‰ ⁰⁰⁰
	New cases of malignant neoplasms	399.3‰ ⁰⁰⁰
	Hospitalized patient	28 321.6‰ ⁰⁰⁰
	0-17 years of age	18 225.3‰ ⁰⁰⁰
	18-64 years of age	23 935.8‰ ⁰⁰⁰
	over 65 years of age	48 673.8‰ ⁰⁰⁰
	Primary disability of persons over 16 years of age	9.0‰
	Primary disability of persons under 16 years of age	2.9‰
	Hospitals (number)	320
	Beds in hospitals (number)	51 991
	Physicians (number)	29 717
	Auxiliary medical personnel (number)	44 676
	The highest proportion of doctors in the age group 55-64 years	35.1%
	The highest proportion of nurses in the age group 45-54 years	32.7%
	Persons served in need of urgent medical care	2 265 975
	Surgeries of patients discharged from hospitals	526 273

I. POPULATION AND VITAL STATISTICS

1. Population on 31.XII.¹⁾

Year	Total	Male	Female	Urban	Rural
Number (thous.)					
1970	8 514.9	4 256.6	4 258.3	4 509.8	4 005.1
1980	8 876.6	4 421.7	4 454.9	5 546.0	3 330.6
1990	8 669.3	4 270.0	4 399.3	5 817.9	2 851.4
2000	8 149.5	3 967.4	4 182.1	5 576.9	2 572.6
2005	7 718.8	3 743.4	3 975.4	5 416.6	2 302.2
2010	7 504.9	3 629.8	3 875.1	5 375.1	2 129.8
2015	7 153.8	3 477.2	3 676.6	5 227.2	1 926.6
2017	7 050.0	3 422.4	3 627.6	5 181.8	1 868.3
2018	7 000.0	3 395.7	3 604.3	5 159.1	1 840.9
2019	6 951.5	3 369.6	3 581.8	5 125.4	1 826.1
2020	6 916.5	3 349.7	3 566.8	5 043.2	1 873.4
Percentage (%)					
1970	100.0	50.0	50.0	53.0	47.0
1980	100.0	49.8	50.2	62.5	37.5
1990	100.0	49.3	50.7	67.1	32.9
2000	100.0	48.7	51.3	68.4	31.6
2005	100.0	48.5	51.5	70.2	29.8
2010	100.0	48.4	51.6	71.6	28.4
2015	100.0	48.6	51.4	73.1	26.9
2017	100.0	48.5	51.5	73.5	26.5
2018	100.0	48.5	51.5	73.7	26.3
2019	100.0	48.5	51.5	73.7	26.3
2020	100.0	48.4	51.6	72.9	27.1

¹⁾ NSI data

2. Population by Age on 31.XII.2020¹⁾

(number)

<i>Age</i>	<i>Total</i>	<i>Male</i>	<i>Female</i>	<i>Urban</i>	<i>Rural</i>
Total	6 916 548	3 349 715	3 566 833	5 043 186	1 873 362
0	59 029	30 342	28 687	43 921	15 108
1–4	255 341	131 099	124 242	192 966	62 375
5–9	337 290	173 538	163 752	257 118	80 172
10–14	347 354	178 487	168 867	259 264	88 090
15–19	314 238	161 910	152 328	229 007	85 231
20–24	306 421	157 465	148 956	228 909	77 512
25–29	364 385	187 174	177 211	273 759	90 626
30–34	474 861	243 542	231 319	368 871	105 990
35–39	478 532	247 821	230 711	367 698	110 834
40–44	522 220	269 012	253 208	399 961	122 259
45–49	528 127	270 215	257 912	398 093	130 034
50–54	491 725	248 851	242 874	358 041	133 684
55–59	464 881	228 621	236 260	330 390	134 491
60–64	468 096	220 852	247 244	329 849	138 247
65–69	451 579	200 200	251 379	313 677	137 902
70–74	428 163	176 225	251 938	289 345	138 818
75–79	288 403	109 935	178 468	185 976	102 427
80–84	190 665	67 115	123 550	121 327	69 338
85–89	107 547	35 711	71 836	69 452	38 095
90–94	32 370	10 087	22 283	21 965	10 405
95–99	4 989	1 427	3 562	3 373	1 616
100+	332	86	246	224	108

¹⁾ NSI data

3. Age Structure of the Population

(%)

Year	Total	Age groups		
		0–17	18–64	65+
Total				
1995	100.0	22.0	62.8	15.2
2000	100.0	19.5	64.1	16.4
2010	100.0	16.7	65.6	17.7
2015	100.0	16.6	63.0	20.4
2017	100.0	16.9	62.1	21.0
2018	100.0	17.0	61.7	21.3
2019	100.0	17.1	61.3	21.6
2020	100.0	17.2	61.0	21.8
Urban				
1995	100.0	22.9	65.6	11.5
2000	100.0	20.0	67.7	12.3
2010	100.0	16.9	68.5	14.6
2015	100.0	16.8	65.0	18.2
2017	100.0	17.2	63.9	18.9
2018	100.0	17.3	63.4	19.3
2019	100.0	17.4	62.8	19.8
2020	100.0	17.7	62.4	19.9
Rural				
1995	100.0	20.1	57.0	22.9
2000	100.0	18.6	56.3	25.1
2010	100.0	16.1	58.2	25.7
2015	100.0	16.0	57.4	26.6
2017	100.0	16.2	56.9	26.9
2018	100.0	16.2	56.8	27.0
2019	100.0	16.2	56.9	26.9
2020	100.0	15.9	57.5	26.6

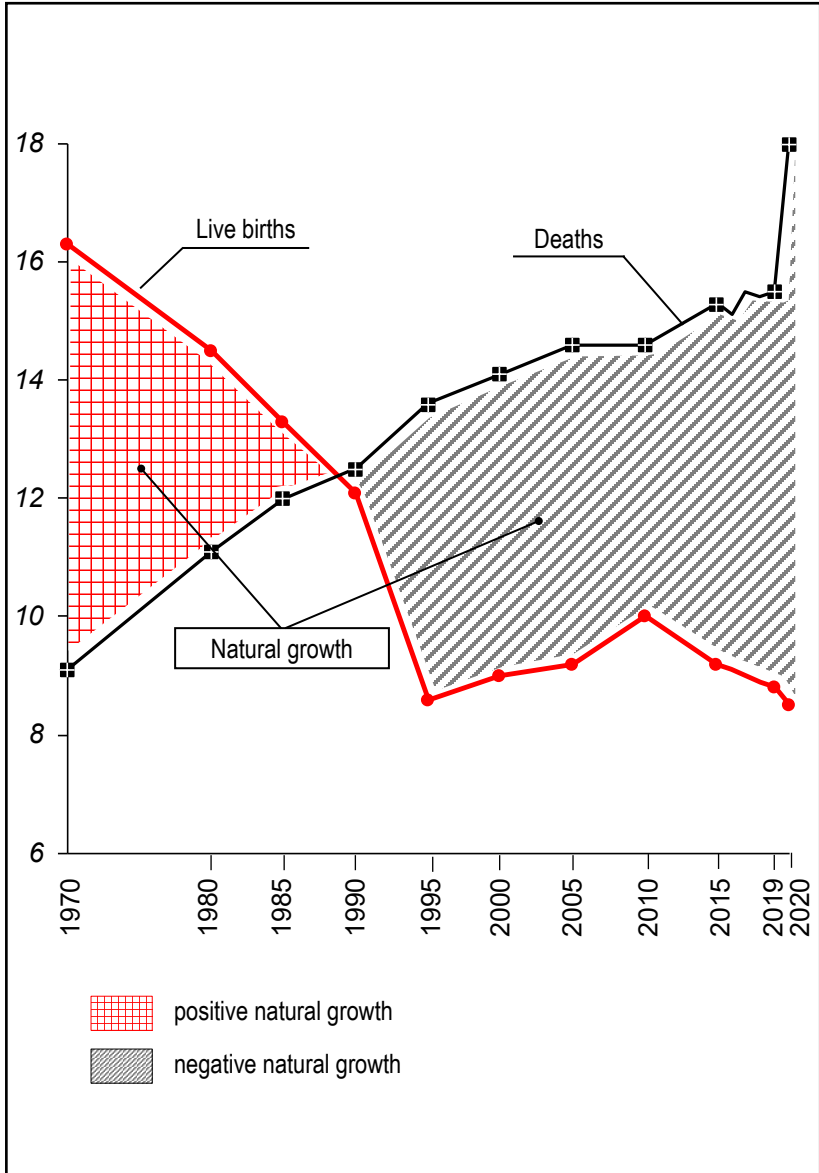
4. Live Births, Deaths and Natural Growth¹⁾

Year	Live births	Deaths	Natural growth	Live births	Deaths	Natural growth
	Number			Per 1000 population		
Total						
1980	128 190	97 950	30 240	14.5	11.1	3.4
1990	105 180	108 608	-3 428	12.1	12.5	-0.4
2000	73 679	115 087	-41 408	9.0	14.1	-5.1
2010	75 513	110 165	-34 652	10.0	14.6	-4.6
2015	65 950	110 117	-44 167	9.2	15.3	-6.2
2017	63 955	109 791	-45 836	9.0	15.5	-6.5
2018	62 197	108 526	-46 329	8.9	15.4	-6.5
2019	61 538	108 083	-46 545	8.8	15.5	-6.7
2020	59 086	124 735	-65 649	8.5	18.0	-9.5
Urban						
1980	86 664	45 153	41 511	15.7	8.2	7.5
1990	73 940	55 225	18 715	12.6	9.4	3.2
2000	52 789	64 184	-11 395	9.5	11.5	-2.0
2010	57 077	65 759	-8 682	10.6	12.2	-1.6
2015	49 486	67 749	-18 263	9.4	12.9	-3.5
2017	48 005	68 418	-20 413	9.2	13.2	-4.0
2018	46 877	68 011	-21 134	9.1	13.2	-4.1
2019	45 991	68 551	-22 560	8.9	13.3	-4.4
2020	43 829	79 952	-36 123	8.6	15.7	-7.1
Rural						
1980	41 526	52 797	-11 271	12.4	15.7	-3.3
1990	31 240	53 383	-22 143	10.9	18.6	-7.7
2000	20 890	50 903	-30 013	8.1	19.6	-11.5
2010	18 436	44 406	-25 970	8.6	20.7	-12.1
2015	16 464	42 368	-25 904	8.5	22.0	-13.4
2017	15 950	41 373	-25 423	8.5	22.0	-13.5
2018	15 320	40 515	-25 195	8.3	21.8	-13.5
2019	15 547	39 532	-23 985	8.5	21.6	-13.1
2020	15 257	44 783	-29 526	8.2	24.2	-16.0

¹⁾ NSI data

Live Births, Deaths and Natural Growth

(per 1000 population)



5. Births and Abortions

Year	Births	Abortions	Births	Abortions
	Number		Per 1000 women at 15–49	
1980	129 176	156 056	60.4	72.9
1990	105 821	144 644	49.2	67.2
2000	74 234	61 378	37.0	30.6
2010	76 105	31 548	42.9	17.8
2015	66 370	27 782	42.3	17.7
2017	64 359	24 287	42.1	15.9
2018	62 576	23 437	41.6	15.6
2019	61 882	21 864	41.9	14.8
2020	59 440	19 328	40.8	13.3

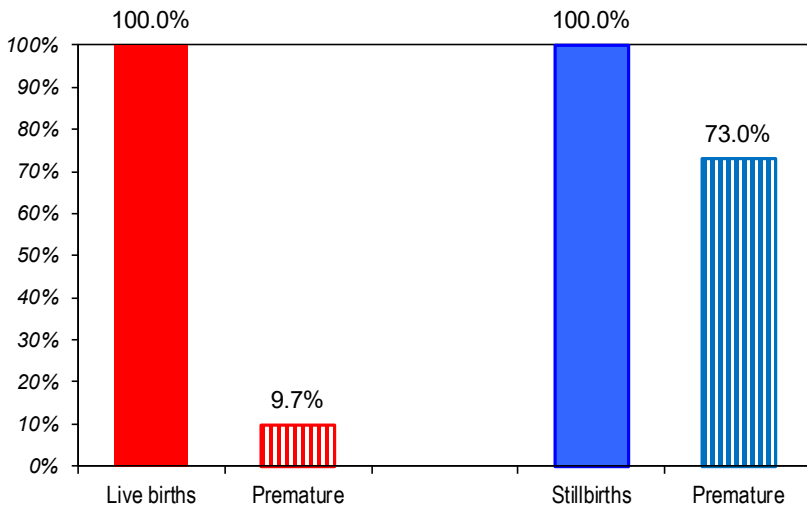
6. Age Specific Fertility Rates

(per 1000 women)

Age	1990	2000	2010	2015	2017	2018	2019	2020
Total	48.9	36.7	42.6	42.0	41.8	41.3	41.6	40.5
to 19	68.3	47.1	43.1	41.3	39.9	40.6	40.9	39.3
20–24	158.4	89.7	73.1	69.7	71.5	69.3	69.3	67.6
25–29	78.3	72.9	86.8	88.1	88.6	88.8	91.3	89.8
30–34	28.8	32.3	65.1	69.7	71.5	72.3	72.8	71.2
35–39	9.4	9.5	26.1	30.6	32.7	32.9	34.0	34.0
40–44	1.8	1.9	4.1	5.9	7.1	7.2	7.7	7.8
over 45	0.1	0.1	0.3	0.7	0.9	0.9	0.9	1.2

7. Premature newborns for 2020

	<i>Live births</i>	<i>Stillbirths</i>
Births	55 662	348
incl. premature weight up to:		
2499-2000 grams	3 798	76
1999-1500 grams	937	52
1499-1000 grams	456	61
999-800 grams	142	41
под 800 grams	42	24



8. Infant Mortality¹⁾

<i>Year</i>	<i>Total</i>	<i>Urban</i>	<i>Rural</i>
Number			
1980	2 594	1 560	1 034
1990	1 554	1 020	534
2000	981	657	324
2010	708	461	247
2015	434	255	179
2017	408	257	151
2018	358	234	124
2019	342	218	124
2020	301	196	105
Per 1000 live births			
1980	20.2	18.0	24.9
1990	14.8	13.8	17.1
2000	13.3	12.4	15.5
2010	9.4	8.1	13.4
2015	6.6	5.2	10.9
2017	6.4	5.4	9.5
2018	5.8	5.0	8.1
2019	5.6	4.7	8.0
2020	5.1	4.5	6.9

9. Perinatal, Neonatal and Postneonatal Infant Mortality

(per 1000 live births)

	<i>1990</i>	<i>2000</i>	<i>2010</i>	<i>2015</i>	<i>2017</i>	<i>2018</i>	<i>2019</i>	<i>2020</i>
Perinatal ²⁾	11.1	12.2	11.4	9.1	8.9	8.5	7.8	7.9
Neonatal	7.7	7.5	5.2	4.0	3.8	3.6	3.1	2.8
Postneonatal ³⁾	7.1	5.9	4.2	2.6	2.6	2.1	2.5	2.3

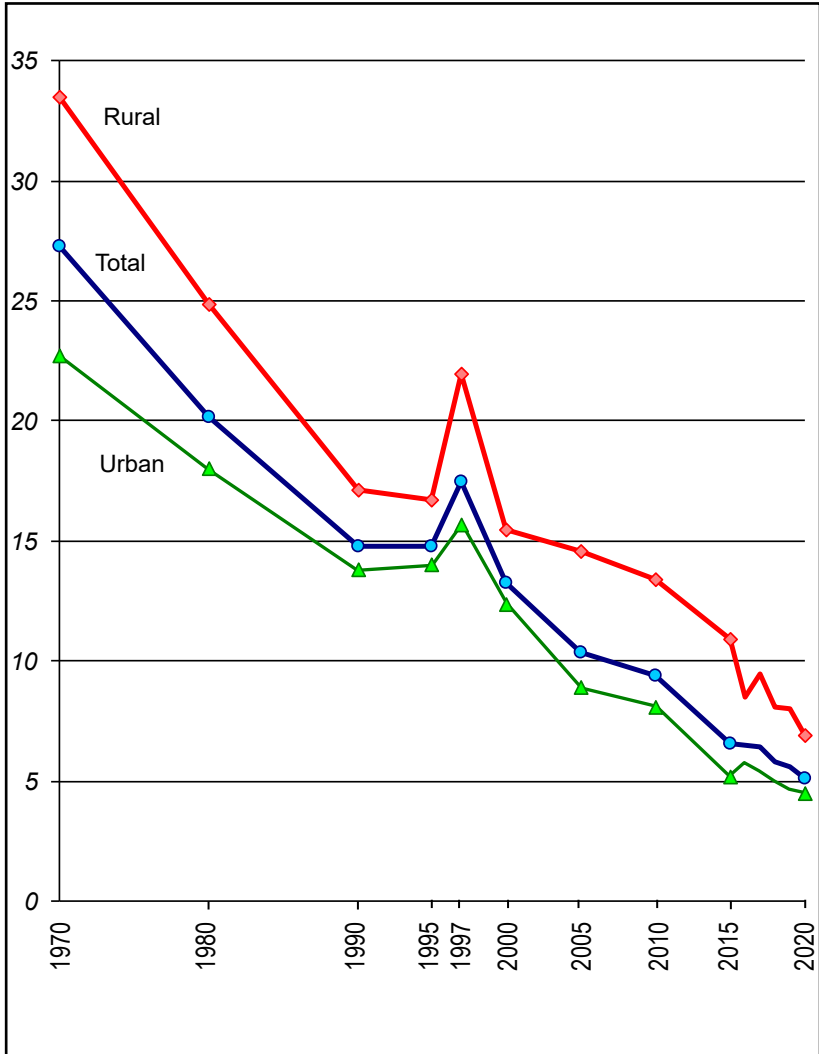
¹⁾ NSI data

²⁾ Per 1000 births.

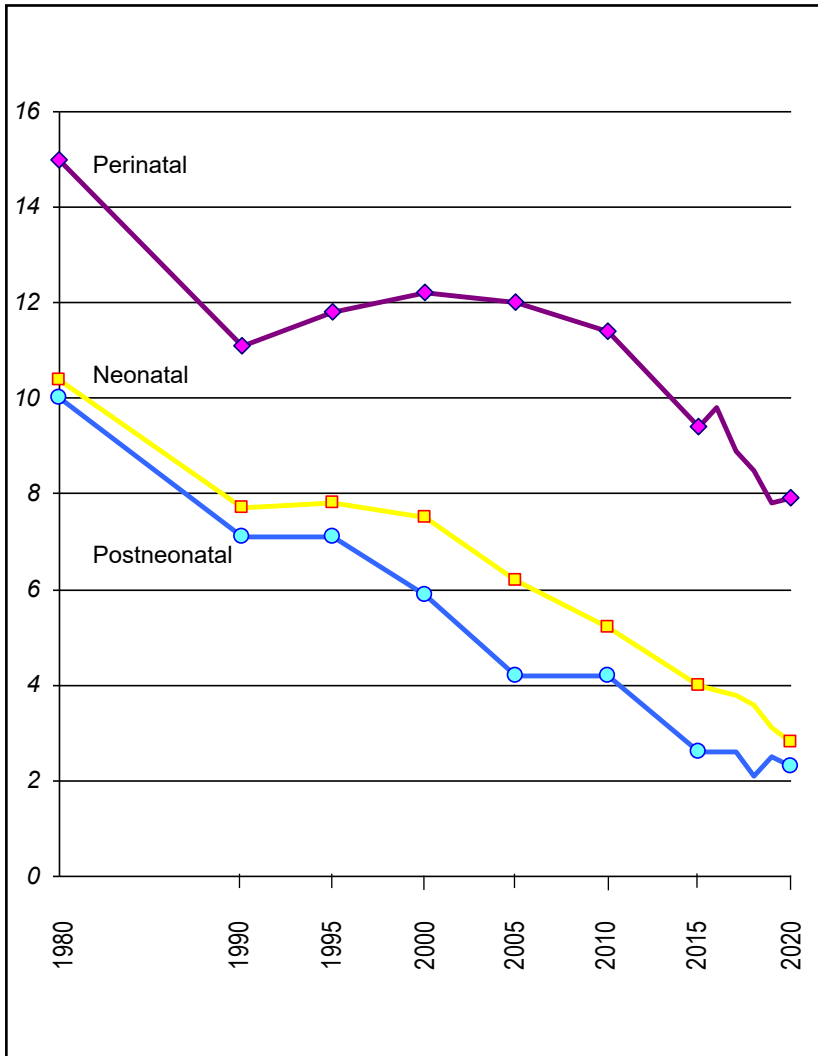
³⁾ Per 1000 live births, excl. deaths before 28th day.

Infant Mortality

(per 1000 live births)



Perinatal, Neonatal and Postneonatal Infant Mortality



10. Stillbirths and Infant Deaths Under 1 Year¹⁾

(number)

Year	Stillbirths	Infant deaths under 1 year			
		Total	Incl. :		
			0–6 days	7–27 days	28+ days
Total					
1980	986	2 594	957	372	1 265
1990	641	1 554	533	278	743
2000	555	981	348	201	432
2010	592	708	274	120	314
2015	420	434	183	81	170
2017	404	408	167	76	165
2018	379	358	155	72	131
2019	344	342	138	53	151
2020	354	301	115	53	133
Urban					
1980	606	1 560	640	245	675
1990	449	1 020	357	208	455
2000	365	657	237	141	279
2010	409	461	183	80	198
2015	284	255	105	51	99
2017	290	257	105	53	99
2018	277	234	105	55	74
2019	243	218	87	37	94
2020	231	196	77	39	80
Rural					
1980	380	1 034	317	127	590
1990	192	534	176	70	288
2000	190	324	111	60	153
2010	183	247	91	40	116
2015	136	179	78	30	71
2017	114	151	62	23	66
2018	102	124	50	17	57
2019	101	124	51	16	57
2020	123	105	38	14	53

¹⁾ NSI data

11. Mortality by Age Groups

(per 1000 population of the same age group)

Year	Total	Age groups								
		under 1 year ¹⁾	1-9	10-19	20-29	30-39	40-49	50-59	60-69	70+
1980	11.1	20.2	0.7	0.6	1.0	1.6	3.6	9.1	24.3	88.1
1990	12.5	14.8	0.6	0.6	1.1	1.8	4.3	10.0	23.5	93.4
2000	14.1	13.3	0.5	0.4	0.8	1.7	4.3	10.1	23.8	84.5
2010	14.6	9.4	0.3	0.4	0.7	1.3	3.7	9.4	20.1	80.2
2015	15.3	6.6	0.2	0.3	0.7	1.3	3.4	9.2	19.9	78.0
2017	15.5	6.4	0.2	0.3	0.6	1.2	3.4	9.3	20.1	75.7
2018	15.4	5.8	0.3	0.3	0.6	1.3	3.3	9.3	19.9	73.8
2019	15.5	5.6	0.2	0.3	0.7	1.3	3.4	8.8	20.1	72.6
2020	18.0	5.1	0.2	0.3	0.6	1.4	3.9	10.4	24.0	82.0

¹⁾ Per 1000 live births

12. Life Expectancy in the Republic of Bulgaria¹⁾

(in years)

Periods	Total	Male	Female
1935-1939	51.75	50.98	52.56
1974-1976	71.31	68.68	73.91
1989-1991	71.22	68.02	74.66
2000-2002	71.87	68.54	75.37
2005-2007	72.70	69.20	76.30
2008-2010	73.60	70.00	77.20
2010-2012	74.02	70.62	77.55
2012-2014	74.69	71.17	78.28
2014-2016	74.65	71.23	78.19
2015-2017	74.76	71.26	78.40
2016-2018	74.83	71.37	78.39
2017-2019	74.90	71.46	78.45
2018-2020	74.64	71.11	78.22

¹⁾ NSI data

II. MORBIDITY AND MORTALITY BY CAUSES

1. Registered Cases of Certain Infectious Diseases Subject to Obligatory Reporting

(per 100000 population)

Cases	1980	1990	2000	2010	2019	2020
Diphtheria	0.0	–	–	–	–	–
Scarlet fever	145.6	85.7	64.6	34.3	44.3	14.6
Measles	121.5	1.7	0.6	292.1	17.5	3.9
Pertussis	1.7	0.3	1.3	0.7	1.0	0.4
Rubeolla	779.1	147.3	348.2	0.5	–	–
Varicella	537.2	418.6	285.8	261.8	439.1	176.9
Mumps	73.6	1.5	28.8	4.2	0.7	0.2
Meningococcal meningitis and sepsis	1.2	0.9	1.1	0.2	0.2	0.1
Poliomyelitis	–	–	–	–	–	–
Q fever	0.0	0.4	1.8	0.2	0.6	1.5
Crimean-Congo haemorrhagic fever	0.1	0.1	0.1	0.1	0.0	0.0
Lyme disease	–	–	3.6	7.9	5.4	2.3
Malaria ¹⁾	1.4	0.5	0.2	0.1	0.1	0.1
Typhoid fever	0.0	0.0	–	0.0	–	–
Shigellosis	96.9	61.9	19.8	7.9	3.2	0.7
Viral hepatitis	110.8	274.2	104.8	39.9	32.2	24.0
Anthrax	0.1	0.1	0.2	0.0	–	–
Leptospirosis	0.2	0.3	0.4	0.1	0.1	0.0
Tetanus	0.2	0.1	0.0	0.0	–	0.0
Bacterial meningitis and meningoencephalitis	•	•	•	1.9	1.4	0.6
Viral meningitis and meningoencephalitis	•	•	•	3.2	2.8	1.0

¹⁾ All registered cases are imported.

2. Registered Cases of Active Tuberculosis

(per 100000 population)

<i>Form of disease</i>	1980	1990	2000	2010	2015	2018	2019	2020
Total	178.2	106.0	173.4	90.5	62.8	53.4	51.8	44.2
incl.: new cases and relapses ¹⁾	37.0	25.9	41.0	30.3	21.9	18.4	18.5	13.0
Tuberculosis of the respiratory system	115.1	80.5	144.8	79.2	56.6	48.7	47.0	40.0
incl.: new cases and relapses ¹⁾	25.6	19.9	35.6	26.6	19.9	16.7	16.9	11.8
Tuberculosis of the bones and joints	12.4	5.3	4.8	1.8	0.9	0.8	0.7	0.4
incl.: new cases and relapses ¹⁾	2.2	1.0	1.0	0.5	0.2	0.3	0.1	0.1
Tuberculosis of the nervous system ²⁾	0.5	0.3	0.5	0.2	0.3	0.3	0.1	0.3
incl.: new cases and relapses ¹⁾	0.1	0.1	0.1	0.1	0.1	0.0	0.0	0.1
Other forms of tuberculosis	50.2	19.9	23.3	9.3	5.0	3.6	4.0	3.5
incl.: new cases and relapses ¹⁾	9.1	4.9	4.3	3.1	1.7	1.4	1.5	1.0

¹⁾ Until 2015 – only new cases

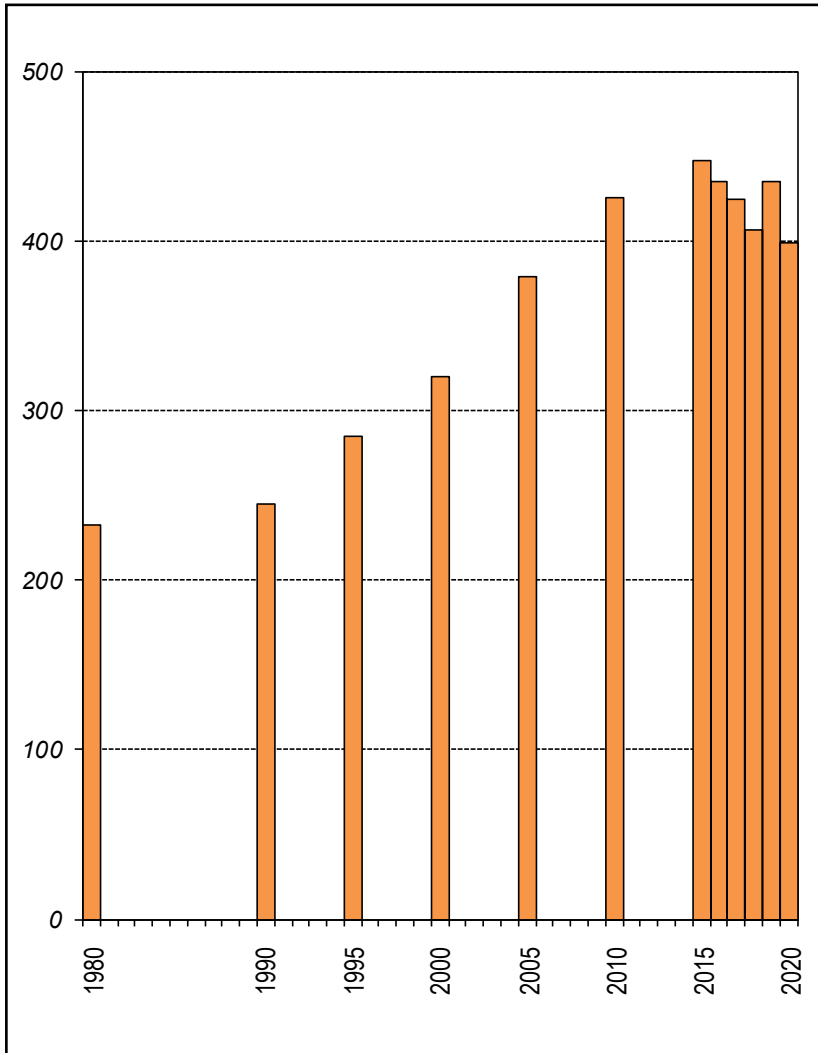
²⁾ Until 2004 – Meningitis and CNS tuberculosis (ICD-9)

3. Registered New Cases of Malignant Neoplasms

Year	Number	Per 100 000 population
1980	20 620	232.7
1990	22 038	252.8
1995	23 966	285.1
2000	26 156	320.1
2005	29 354	379.3
2010	32 067	425.6
2011	32 969	448.7
2012	31 588	432.4
2013	33 555	461.9
2014	31 928	442.0
2015	32 097	447.2
2016	31 041	435.5
2017	30 057	424.8
2018	28 573	406.7
2019	30 338	434.9
2020	27 687	399.3

Registered New Cases of Malignant Neoplasms

(per 100 000 population)



4. Registered New Cases of Malignant Neoplasms by Localization

<i>Localization ICD-10</i>	2019		2020	
	<i>Number</i>	<i>Per 100 000 population</i>	<i>Number</i>	<i>Per 100 000 population</i>
Total	30 338	434.9	27 687	399.3
Lips, oral cavity and pharynx	754	10.8	682	9.8
Incl. lips	107	1.5	110	1.6
Digestive organs	6 985	100.1	6 561	94.6
Incl. stomach	1 164	16.7	1 063	15.3
colon	2 344	33.6	2 160	31.2
rectosigmoid junction, rectum, anus and anal canal	1 594	22.9	1 497	21.6
Respiratory and intrathoracic organs	3 597	51.6	3 302	47.6
Incl. trachea, bronchus and lung	3 090	44.3	2 819	40.7
Bone and articular cartilage	52	0.7	44	0.6
Melanoma and other malignant neoplasms of skin	4 648	66.6	3 756	54.2
Mesothelial and soft tissue	278	4.0	238	3.4
Malignant neoplasm of breast	3 333	47.8	3 075	44.3
Incl. female breast	3 263	90.8 ¹⁾	3 024	84.6 ¹⁾
Female genital organs	2 773	77.2 ¹⁾	2 676	74.9 ¹⁾
Incl. cervix uteri	892	24.8 ¹⁾	844	23.6 ¹⁾
corpus uteru	1 120	31.2 ¹⁾	1 058	29.6 ¹⁾
ovary	604	16.8 ¹⁾	597	16.7 ¹⁾
Male genital organs	2 822	83.4 ²⁾	2 553	76.0 ²⁾
Incl. prostate	2 606	77.0 ²⁾	2 377	70.8 ²⁾
Urinary tract	2 369	34.0	2 264	32.7
Incl. bladder	1 592	22.8	1 553	22.4
Eye, brain and other parts of central nervous system	514	7.4	492	7.1
Thyroid and other endocrine glands	322	4.6	236	3.4
Ill-defined, secondary and unspeci- fied sites	1 014	14.5	1 001	14.4
Lymphoid, haematopoietic and related tissue	877	12.6	807	11.6
Independent (primary) multiple sites	–	–	–	–

¹⁾ Per 100 000 females

²⁾ Per 100 000 males

5. Patients Under Observation of Psychiatric Establishments and structures by Type of Disease on 31.12.

<i>Name of disease – ICD-10</i>	2019		2020	
	Number	per 100 000 population	Number	per 100 000 population
Total	116851	1681.0	118778	1 717.3
Mental and behavioural disorders	112031	1611.6	114032	1 648.7
Dementia	2730	39.3	2948	42.6
Delirium, not induced by alcohol and other psychoactive substances	293	4.2	290	4.2
Other mental disorders due to brain disease	4187	60.2	4198	60.7
Mental and behavioural disorders due to use of alcohol	7947	114.3	7971	115.2
Mental and behavioural disorders due to use of other psychoactive substance	1174	16.9	1427	20.6
Mental and behavioural disorders due to use of opioids	893	12.8	863	12.5
Schizophrenia, schizotypal and delusional disorders	29559	425.2	29653	428.7
Schizophrenia	23125	332.7	23189	335.3
Acute and transient psychotic disorders	2703	38.9	2743	39.7
Mood [affective] disorders	20038	288.3	20283	293.3
Manic episode	1264	18.2	1262	18.2
Bipolar affective disorder	5945	85.5	6197	89.6
Depressive episode	4831	69.5	4829	69.8
Recurrent depressive disorder	7253	104.3	7252	104.8
Neurotic, stress-related and somatoform disorders	11364	163.5	12313	178.0
Disorders of eating, sleep and sexuality	105	1.5	115	1.7
Disorders of adult personality and behaviour	4754	68.4	4732	68.4
Mental retardation	25934	373.1	26015	376.1
Specific disorders of psychological development	1508	21.7	1586	22.9
Pervasive developmental disorders	696	10.0	737	10.7
Autism	178	2.6	216	3.1
Hyperkinetic disorders	601	8.6	581	8.4
Other disorders of behaviour and emotions	453	6.5	493	7.1
Nonorganic enuresis	89	1.3	86	1.2
All other classes of diseases	4820	69.3	4746	68.6
Epilepsy	4819	69.3	4745	68.6

6. Hospitalized Patients (discharged and deceased) in Hospitals by Age¹⁾

Year	Age group				
	Total	0-17	18+	incl.:	
				18-64	65+
Number					
2005	1 614 313	308 107	1 306 206	880 895	425 311
2010	1 917 199	328 306	1 588 893	1 010 719	578 174
2015	2 302 891	300 574	2 002 317	1 199 652	802 665
2017	2 331 264	290 231	2 041 033	1 185 167	855 866
2018	2 401 759	287 069	2 114 690	1 206 822	907 868
2019	2 412 523	287 540	2 124 983	1 198 247	926 736
2020	1 963 826	216 902	1 746 924	1 014 837	732 087
Per 100 000 population					
2005	20 857.0	22 576.3	20 489.0	17 459.0	31 986.7
2010	25 446.3	26 179.2	25 300.0	20 412.0	43 516.5
2015	32 082.7	25 342.4	33 416.8	26 418.9	55 315.8
2017	32 946.3	24 315.6	34 697.6	26 903.0	57 945.8
2018	34 188.6	24 098.2	36 249.0	27 766.8	61 032.6
2019	34 584.4	24 168.9	36 726.0	27 947.8	61 840.0
2020	28 321.6	18 225.3	30 413.5	23 935.8	48 673.8

¹⁾ Incl. healthy live births.

7. Hospitalized Patients (discharged and deceased) in Hospitals by Classes of ICD-10 in 2020

ICD-10	Classes	Number	Per 100000 population	Struc- ture (%)
	Total	1 963 826	28 321.6	100.0
	I.Certain infectious and parasitic diseases	23 863	344.1	1.2
	II.Neoplasms	149 788	2 160.2	7.6
	III.Diseases of the blood and blood-forming organs and certain disorders involving the immune mechanism	17 810	256.8	0.9
	IV.Endocrine, nutritional and metabolic diseases	55 735	803.8	2.8
	V.Mental and behavioural disorders	32 713	471.8	1.7
	VI.Diseases of the nervous system	49 992	721.0	2.5
	VII.Diseases of the eye and adnexa	55 749	804.0	2.8
	VIII.Diseases of the ear and mastoid process	26 578	383.3	1.3
	IX.Diseases of the circulatory system	250 875	3 618.0	12.8
	X.Diseases of the respiratory system	158 428	2 284.8	8.1
	XI.Diseases of the digestive system	179 931	2 594.9	9.2
	XII.Diseases of the skin and subcutaneous tissue	48 514	699.7	2.5
	XIII.Diseases of the musculoskeletal system and connective tissue	97 106	1 400.4	4.9
	XIV.Diseases of the genitourinary system	124 980	1 802.4	6.4
	XV.Pregnancy, childbirth and the puerperium	115 233	1 661.8	5.9
	XVI.Certain conditions originating in the perinatal period	20 767	299.5	1.1
	XVII.Congenital malformations, deformations and chromosomal abnormalities	6 079	87.7	0.3
	XVIII.Symptoms, signs and abnormal clinical and laboratory findings, not elsewhere classified	27 684	399.2	1.4
	XIX.Injury, poisoning and certain other conse- quences of external causes	121 690	1 755.0	6.2
	XXI.Factors influencing health status and contact with health services ¹⁾	343 322	4 951.3	17.5
	XXII.Codes for special purposes	56 989	821.9	2.9

¹⁾ Incl. 39 656 healthy live births.

8. Hospitalized Patients (discharged and deceased) in Hospitals 0-17 Years of Age by Classes of ICD-10 in 2020

ICD-10	Classes	Number	Per 100000 population	Struc- ture (%)
	Total	216 902	18 225.3	100.0
	I.Certain infectious and parasitic diseases	6 732	565.7	3.1
	II.Neoplasms	2 918	245.2	1.3
	III.Diseases of the blood and blood-forming organs and certain disorders involving the immune mechanism	2 143	180.0	1.0
	IV.Endocrine, nutritional and metabolic diseases	3 179	267.1	1.5
	V.Mental and behavioural disorders	738	62.0	0.3
	VI.Diseases of the nervous system	3 038	255.3	1.4
	VII.Diseases of the eye and adnexa	1 983	166.6	0.9
	VIII.Diseases of the ear and mastoid process	2 290	192.4	1.1
	IX.Diseases of the circulatory system	1 147	96.4	0.5
	X.Diseases of the respiratory system	64 448	5 415.3	29.7
	XI.Diseases of the digestive system	10 225	859.1	4.7
	XII.Diseases of the skin and subcutaneous tissue	3 826	321.5	1.8
	XIII.Diseases of the musculoskeletal system and connective tissue	1 965	165.1	0.9
	XIV.Diseases of the genitourinary system	7 702	647.2	3.6
	XV.Pregnancy, childbirth and the puerperium	6 459	542.7	3.0
	XVI.Certain conditions originating in the perinatal period	20 767	1 745.0	9.6
	XVII.Congenital malformations, deformations and chromosomal abnormalities	5 070	426.0	2.3
	XVIII.Symptoms, signs and abnormal clinical and laboratory findings, not elsewhere classified	7 551	634.5	3.5
	XIX.Injury, poisoning and certain other conse- quences of external causes	17 399	1 462.0	8.0
	XXI.Factors influencing health status and contact with health services ¹⁾	46 915	3 942.0	21.6
	XXII.Codes for special purposes	407	34.2	0.2

¹⁾ Incl. 39 656 healthy live births.

**9. Hospitalized Patients (discharged and deceased)
in Hospitals 18-64 Years of Age
by Classes of ICD-10 in 2020**

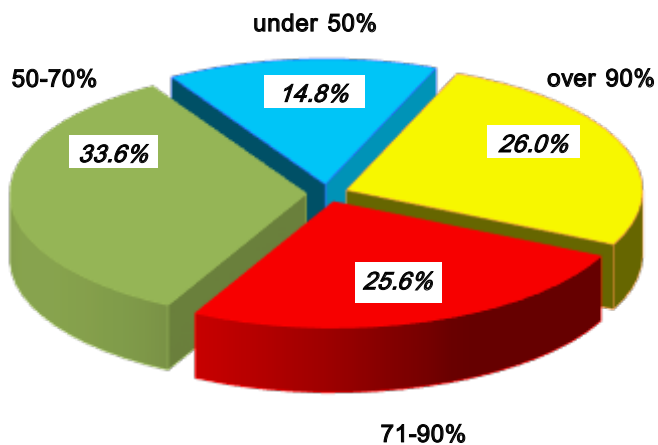
<i>ICD-10</i>	<i>Classes</i>	<i>Number</i>	<i>Per 100000 population</i>	<i>Struc- ture (%)</i>
	Total	1 014 837	23 935.8	100.0
	I.Certain infectious and parasitic diseases	12 344	291.1	1.2
	II.Neoplasms	78 292	1 846.6	7.7
	III.Diseases of the blood and blood-forming organs and certain disorders involving the immune mechanism	8 587	202.5	0.9
	IV.Endocrine, nutritional and metabolic diseases	33 890	799.3	3.3
	V.Mental and behavioural disorders	28 236	666.0	2.8
	VI.Diseases of the nervous system	29 391	693.2	2.9
	VII.Diseases of the eye and adnexa	19 623	462.8	1.9
	VIII.Diseases of the ear and mastoid process	15 361	362.3	1.5
	IX.Diseases of the circulatory system	91 558	2 159.5	9.0
	X.Diseases of the respiratory system	52 046	1 227.6	5.1
	XI.Diseases of the digestive system	100 286	2 365.3	9.9
	XII.Diseases of the skin and subcutaneous tissue	29 872	704.6	3.0
	XIII.Diseases of the musculoskeletal system and connective tissue	61 916	1 460.3	6.1
	XIV.Diseases of the genitourinary system	77 269	1 822.5	7.6
	XV.Pregnancy, childbirth and the puerperium	108 774	2 565.5	10.7
	XVI.Certain conditions originating in the perinatal period	x	x	x
	XVII.Congenital malformations, deformations and chromosomal abnormalities	834	19.7	0.1
	XVIII.Symptoms, signs and abnormal clinical and laboratory findings, not elsewhere classified	9 899	233.5	1.0
	XIX.Injury, poisoning and certain other consequences of external causes	62 916	1 483.9	6.2
	XXI.Factors influencing health status and contact with health services ¹⁾	163 451	3 855.1	16.1
	XXII.Codes for special purposes	30 292	714.5	3.0

**10. Hospitalized Patients (discharged and deceased)
in Hospitals over 65 Years of Age
by Classes of ICD-10 in 2020**

<i>ICD-10</i>	<i>Classes</i>	<i>Number</i>	<i>Per 100000 population</i>	<i>Struc- ture (%)</i>
	Total	732 087	48 673.8	100.0
	I.Certain infectious and parasitic diseases	4 787	318.3	0.7
	II.Neoplasms	68 578	4 559.5	9.4
	III.Diseases of the blood and blood-forming organs and certain disorders involving the immune mechanism	7 080	470.7	1.0
	IV.Endocrine, nutritional and metabolic diseases	18 666	1 241.0	2.5
	V.Mental and behavioural disorders	3 739	248.6	0.5
	VI.Diseases of the nervous system	17 563	1 167.8	2.4
	VII.Diseases of the eye and adnexa	34 143	2 270.0	4.7
	VIII.Diseases of the ear and mastoid process	8 927	593.5	1.2
	IX.Diseases of the circulatory system	158 170	10 516.1	21.6
	X.Diseases of the respiratory system	41 934	2 788.0	5.7
	XI.Diseases of the digestive system	69 420	4 615.5	9.5
	XII.Diseases of the skin and subcutaneous tissue	14 816	985.1	2.0
	XIII.Diseases of the musculoskeletal system and connective tissue	33 225	2 209.0	4.5
	XIV.Diseases of the genitourinary system	40 009	2 660.1	5.5
	XV.Pregnancy, childbirth and the puerperium	x	x	x
	XVI.Certain conditions originating in the perinatal period	x	x	x
	XVII.Congenital malformations, deformations and chromosomal abnormalities	175	11.6	0.0
	XVIII.Symptoms, signs and abnormal clinical and laboratory findings, not elsewhere classified	10 234	680.4	1.4
	XIX.Injury, poisoning and certain other consequences of external causes	41 375	2 750.9	5.6
	XXI.Factors influencing health status and contact with health services ¹⁾	132 956	8 839.8	18.2
	XXII.Codes for special purposes	26 290	1747.9	3.6

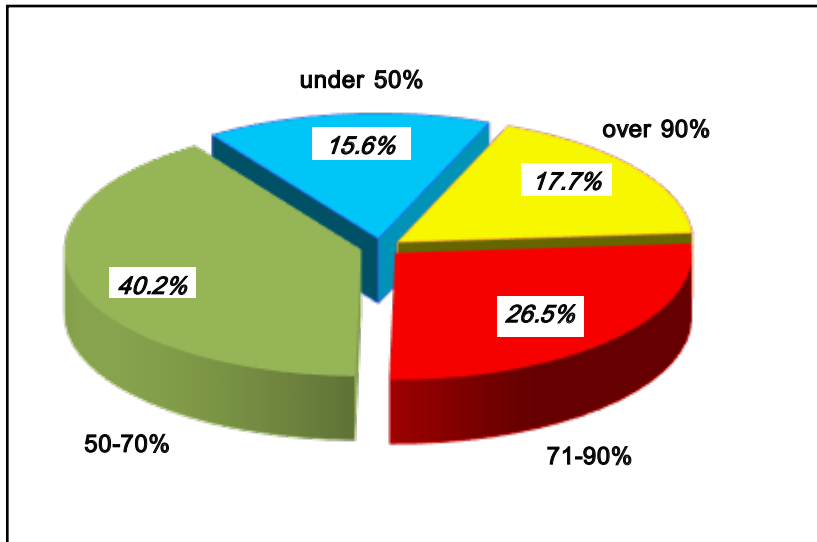
11. Primary Disability of Persons over 16 Years of Age

Year	Loss of capacity to work								Total	
	over 90%		71% – 90%		50% – 70%		under 50%		number	per 1000 population over 16 years of age
	number	%	number	%	number	%	number	%		
2001	29 335	36.8	31 394	39.3	14 847	18.6	4 227	5.3	79 803	12.1
2004	38 413	28.8	56 862	42.7	28 365	21.3	9 611	7.2	133 251	20.2
2005	28 451	24.7	44 452	38.6	28 837	25.0	13 438	11.7	115178	17.5
2010	14 764	22.9	21 002	32.6	20 746	32.2	7 935	12.3	64447	10.0
2015	14 308	21.7	19 838	30.2	22 031	33.5	9 574	14.6	65751	10.8
2017	11 452	21.8	15 640	29.7	18 083	34.4	7 416	14.1	52 591	8.7
2018	11 831	22.3	15 163	28.6	18 140	34.2	7 927	14.9	53 061	8.9
2019	14 004	25.2	14 347	25.9	18 487	33.3	8 656	15.6	55 494	9.4
2020	13 751	26.0	13 527	25.6	17 765	33.6	7 836	14.8	52 879	9.0



12. Primary Disability of Persons under 16 Years of Age

Year	Loss of capacity to work								Total	
	over 90%		71% – 90%		50% – 70%		under 50%		number	per 1000 population under 16 years of age
	number	%	number	%	number	%	number	%		
2001	2 570	37.8	1 757	25.8	1 735	25.5	740	10.9	6 802	5.1
2004	1 222	20.7	1 181	20.0	2 645	44.9	851	14.4	5 899	5.0
2005	801	17.1	•	•	•	•	819	17.5	4 674	4.0
2010	628	16.4	•	•	•	•	570	14.9	3 833	3.5
2015	526	10.5	815	16.2	2 351	46.9	1 322	26.4	5 014	4.7
2017	509	12.5	792	19.5	1 912	47.0	857	21.0	4 070	3.8
2018	559	14.3	829	21.2	1 770	45.2	757	19.3	3 915	3.7
2019	526	15.3	780	22.7	1 443	41.9	692	20.1	3 441	3.2
2020	546	17.7	815	26.5	1 238	40.2	480	15.6	3 079	2.9



13. Primary Disability of Persons over 16 Years of Age by Class of Disease and Loss of Capacity to work in 2020

(number)

ICD-10	Classes	over 90%	71%–90%	50%–70%	under 50%	Total
	Total	13 751	13 527	17 765	7 836	52 879
	I.Certain infectious and parasitic diseases	204	41	22	54	321
	II.Neoplasms	7 391	4 569	858	120	12 938
	IV.Endocrine, nutritional and metabolic diseases	150	629	1 584	690	3 053
	V.Mental and behavioural disorders	1 082	915	911	87	2 995
	VI.Diseases of the nervous system	396	410	715	244	1 765
	VII.Diseases of the eye and adnexa	482	332	761	225	1 800
	VIII.Diseases of the ear and mastoid process	24	112	480	249	865
	IX.Diseases of the circulatory system	2 595	4 335	6 763	3 367	17 060
	X.Diseases of the respiratory system	72	135	640	524	1 371
	XI.Diseases of the digestive system	179	401	350	170	1 100
	XIII.Diseases of the musculoskeletal system and connective tissue	427	1 197	3 125	1 319	6 068
	XIV.Diseases of the genitourinary system	309	168	389	128	994
	XVII.Congenital malformations, deformations and chromosomal abnormalities	10	17	81	27	135
	XIX.Injury, poisoning and certain other consequences of external causes	382	192	926	564	2 064
	Other classes	48	74	160	68	350

14. Primary Disability of Persons under 16 Years of Age by Class of Disease and Loss of Capacity in 2020

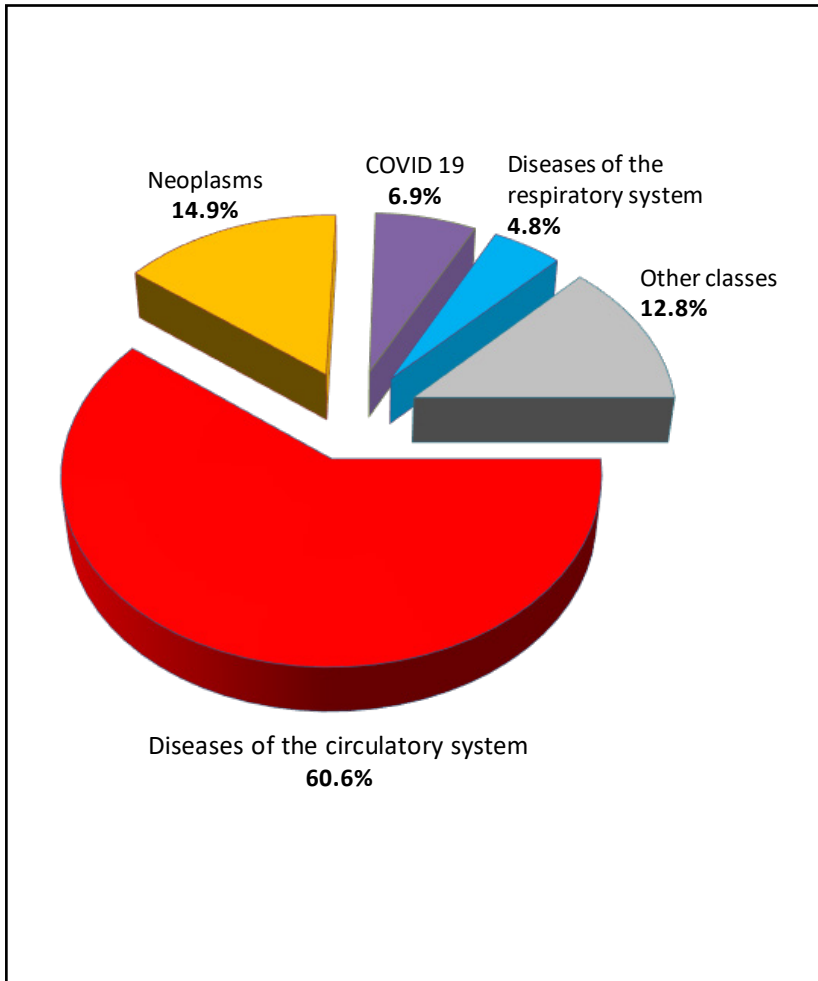
(number)						
ICD-10	Classes	over 90%	71%–90%	50%–70%	under 50%	Total
	Total	546	815	1 238	480	3 079
	I.Certain infectious and parasitic diseases	22	1	8	-	31
	II.Neoplasms	103	13	11	13	140
	III.Diseases of the blood and blood-forming organs and certain disorders involving the immune mechanism	12	16	8	2	38
	IV.Endocrine, nutritional and metabolic diseases	19	197	13	10	239
	V.Mental and behavioural disorders	89	303	255	91	738
	VI.Diseases of the nervous system	93	81	135	34	343
	VII.Diseases of the eye and adnexa	14	9	36	24	83
	VIII.Diseases of the ear and mastoid process	25	10	34	16	85
	IX.Diseases of the circulatory system	5	8	10	1	24
	X.Diseases of the respiratory system	4	6	316	171	497
	XI.Diseases of the digestive system	8	16	14	4	42
	XIII.Diseases of the musculoskeletal system and connective tissue	3	48	58	14	123
	XIV.Diseases of the genitourinary system	4	17	9	3	33
	XVII.Congenital malformations, deformations and chromosomal abnormalities	138	68	251	81	538
	XIX.Injury, poisoning and certain other consequences of external causes	2	3	11	10	26
	Other classes	5	19	69	6	99

15. Mortality by Causes in 2020

<i>Cause of death (ICD-10)</i>	<i>Number¹⁾</i>	<i>Per 100000 population</i>	<i>Struc- ture (%)</i>
Total	124 735	1 798.9	100.0
Certain infectious and parasitic diseases	424	6.1	0.3
Neoplasms	18 527	267.2	14.9
Diseases of the blood and blood-forming organs and certain disorders involving the immune mechanism	143	2.1	0.1
Endocrine, nutritional and metabolic diseases	1 809	26.1	1.5
Mental and behavioural disorders	137	2.0	0.1
Diseases of the nervous system	947	13.7	0.8
Diseases of the eye and adnexa	-	-	-
Diseases of the ear and mastoid process	1	0.0	0.0
Diseases of the circulatory system	75 586	1 090.1	60.6
Diseases of the respiratory system	6 006	86.6	4.8
Diseases of the digestive system	4 153	59.9	3.3
Diseases of the skin and subcutaneous tissue	55	0.8	0.0
Diseases of the musculoskeletal system and connective tissue	37	0.5	0.0
Diseases of the genitourinary system	1 798	25.9	1.4
Pregnancy, childbirth and the puerperium	4	0.1	0.0
Certain conditions originating in the perinatal period	137	2.0	0.1
Congenital malformations, deformations and chromosomal abnormalities	93	1.3	0.1
Symptoms, signs and abnormal clinical and laboratory findings, not elsewhere classified	3 817	55.0	3.1
Codes for special purposes – COVID 19	8 554	123.4	6.9
External causes of morbidity and mortality	2 507	36.2	2.0

¹⁾ NSI data

Mortality by Causes in 2020



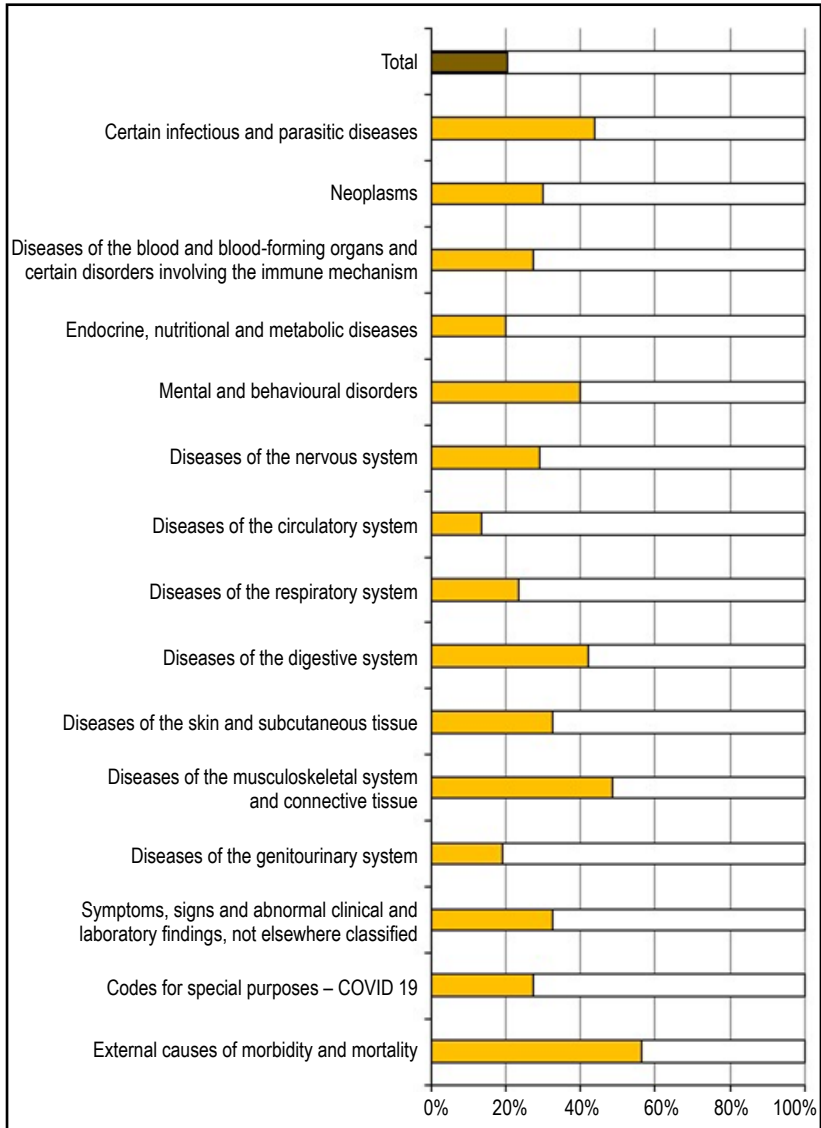
16. Premature mortality in 2020

Cause of death (ICD-10)	Deaths ¹⁾ (number)		Premature mortality (%)
	Total	Incl. up to 64 years	
Total	124 735	25 587	20.5
Certain infectious and parasitic diseases	424	186	43.9
Neoplasms	18 527	5 602	30.2
Diseases of the blood and blood-forming organs and certain disorders involving the immune mechanism	143	39	27.3
Endocrine, nutritional and metabolic diseases	1 809	366	20.2
Mental and behavioural disorders	137	55	40.1
Diseases of the nervous system	947	277	29.3
Diseases of the eye and adnexa	–	–	–
Diseases of the ear and mastoid process	1	0	0.0
Diseases of the circulatory system	75 586	10 291	13.6
Diseases of the respiratory system	6 006	1 403	23.4
Diseases of the digestive system	4 153	1 753	42.2
Diseases of the skin and subcutaneous tissue	55	18	32.7
Diseases of the musculoskeletal system and connective tissue	37	18	48.6
Diseases of the genitourinary system	1 798	341	19.0
Pregnancy, childbirth and the puerperium	4	4	100.0
Certain conditions originating in the perinatal period	137	137	100.0
Congenital malformations, deformations and chromosomal abnormalities	93	81	87.1
Symptoms, signs and abnormal clinical and laboratory findings, not elsewhere classified	3 817	1 244	32.6
Codes for special purposes – COVID 19	8 554	2 363	27.6
External causes of morbidity and mortality	2 507	1 409	56.2

¹⁾ NSI data

Premature mortality in 2020

(percentage)



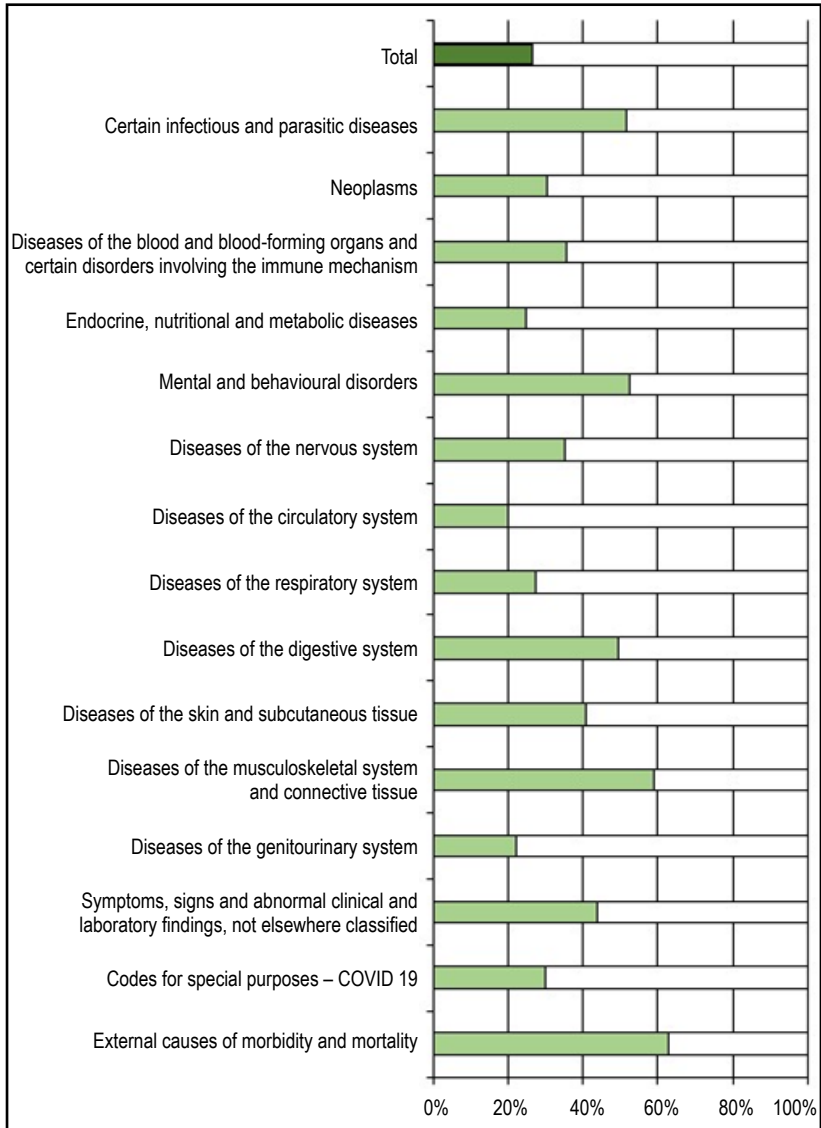
17. Premature mortality in 2020 – male

Cause of death (ICD-10)	Deaths ¹⁾ (number)		Premature mortality (%)
	Total	Incl. up to 64 years	
Total	65 950	17 544	26.6
Certain infectious and parasitic diseases	239	123	51.5
Neoplasms	10 638	3 241	30.5
Diseases of the blood and blood-forming organs and certain disorders involving the immune mechanism	73	26	35.6
Endocrine, nutritional and metabolic diseases	869	217	25.0
Mental and behavioural disorders	80	42	52.5
Diseases of the nervous system	481	169	35.1
Diseases of the eye and adnexa	-	-	-
Diseases of the ear and mastoid process	1	0	0.0
Diseases of the circulatory system	37 017	7 447	20.1
Diseases of the respiratory system	3 610	994	27.5
Diseases of the digestive system	2 759	1 362	49.4
Diseases of the skin and subcutaneous tissue	32	13	40.6
Diseases of the musculoskeletal system and connective tissue	22	13	59.1
Diseases of the genitourinary system	982	219	22.3
Pregnancy, childbirth and the puerperium	-	-	-
Certain conditions originating in the perinatal period	76	76	100.0
Congenital malformations, deformations and chromosomal abnormalities	48	41	85.4
Symptoms, signs and abnormal clinical and laboratory findings, not elsewhere classified	1 919	841	43.8
Codes for special purposes – COVID 19	5 284	1 575	29.8
External causes of morbidity and mortality	1 820	1 145	62.9

¹⁾ NSI data

Premature mortality in 2020 – male

(percentage)



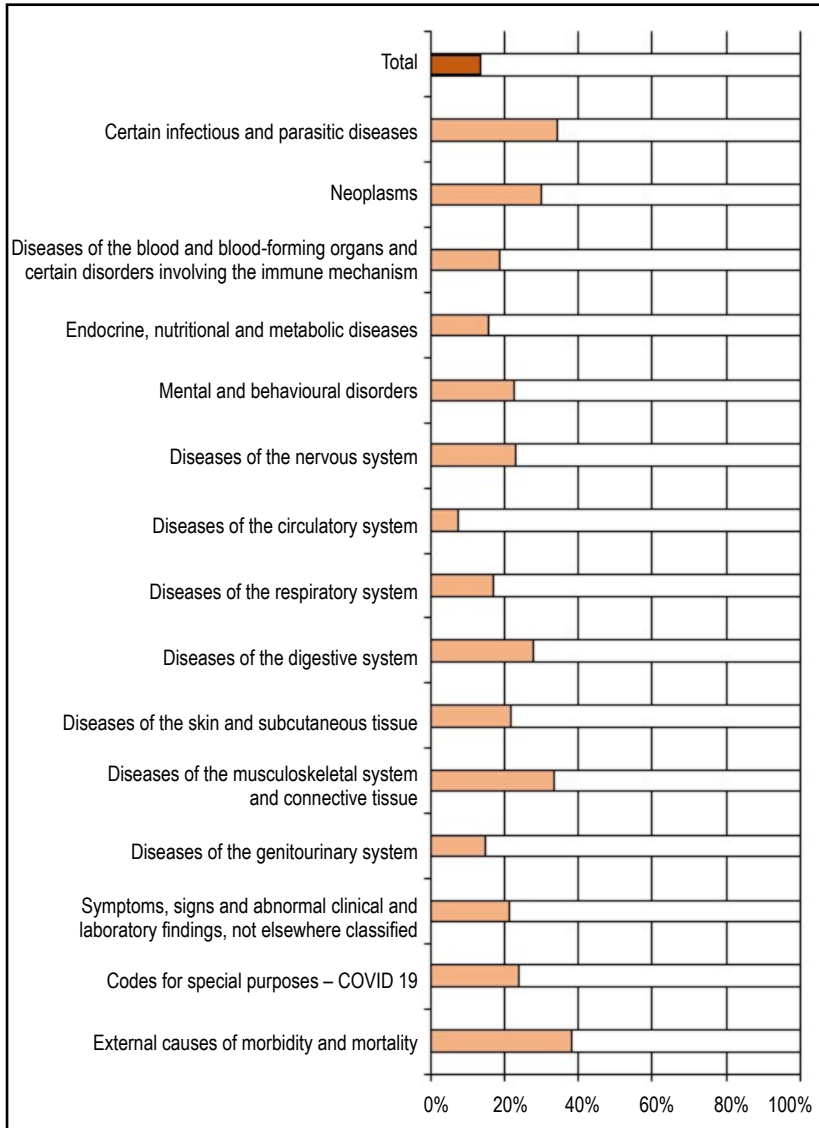
18. Premature mortality in 2020 – female

Cause of death (ICD-10)	Deaths ¹⁾ (number)		Premature mortality (%)
	Total	Incl. up to 64 years	
Total	58 785	8 043	13.7
Certain infectious and parasitic diseases	185	63	34.1
Neoplasms	7 889	2 361	29.9
Diseases of the blood and blood-forming organs and certain disorders involving the immune mechanism	70	13	18.6
Endocrine, nutritional and metabolic diseases	940	149	15.9
Mental and behavioural disorders	57	13	22.8
Diseases of the nervous system	466	108	23.2
Diseases of the eye and adnexa	-	-	-
Diseases of the ear and mastoid process	-	-	-
Diseases of the circulatory system	38 569	2 844	7.4
Diseases of the respiratory system	2 396	409	17.1
Diseases of the digestive system	1 394	391	28.0
Diseases of the skin and subcutaneous tissue	23	5	21.7
Diseases of the musculoskeletal system and connective tissue	15	5	33.3
Diseases of the genitourinary system	816	122	15.0
Pregnancy, childbirth and the puerperium	4	4	100.0
Certain conditions originating in the perinatal period	61	61	100.0
Congenital malformations, deformations and chromosomal abnormalities	45	40	88.9
Symptoms, signs and abnormal clinical and laboratory findings, not elsewhere classified	1 898	403	21.2
Codes for special purposes – COVID 19	3 270	788	24.1
External causes of morbidity and mortality	687	264	38.4

¹⁾ NSI data

Premature mortality in 2020 – female

(percentage)



III. HEALTH FACILITIES

1. Health Facilities and Hospital Beds on 31.XII.2020

<i>Type of health establishments</i>	<i>Number</i>	<i>Beds</i>
Health establishments for hospital care – total¹⁾	320	51 991
Multiprofile hospitals	113	25 996
Multiprofile hospital for active treatment	111	25 881
Specialized hospitals	60	6 502
Specialized hospital for active treatment	30	2 854
Specialized hospital for long term treatment and rehabilitation	10	896
Specialized hospital for rehabilitation	19	2 607
Psychiatric hospitals	12	2 114
Private facilities for hospital care	115	13 799
Health facilities for outpatient care (according to the reported health establishments)		
Outpatient facilities for primary medical care – individual practices	3 037	-
Outpatient facilities for primary dental care – individual practices	4 682	-
Outpatient facilities for primary medical care – group practices	201	-
Outpatient facilities for primary dental care – group practices	368	-
Outpatient facilities for specialized medical care – individual practices	2 610	-
Outpatient facilities for specialized dental care – individual practices	68	-

¹⁾ Health establishments of other administrations are included, but not allocated by type.

1. Health Facilities and Hospital Beds on 31.XII.2020

(continued from previous)

<i>Type of health establishments</i>	<i>Number</i>	<i>Beds</i>
Outpatient facilities for specialized medical care – group practices	129	-
Medical center	752	912
Dental center	54	8
Medico-dental center	50	67
Diagnostic-consulting center	110	309
Stand-alone medico-diagnostic and medico-technical laboratories	1 132	-
Other healthcare and health establishments		
Integral oncological centers	7	1 185
Centers for dermato-venerological diseases	3	30
Centers for mental health	12	1 010
Emergency healthcare centers	27	-
Stand alone centers for transfusional haematology	4	-
Medico-social care centers for children	12	713
Hospices	48	1 220
Centers without beds	6	-
Regional health inspectorates	28	-

2. Beds in Hospitals on 31.XII.2020 by Type

<i>Type of beds</i>	<i>Number</i>	<i>Structure (%)</i>	<i>Per 10 000 population</i>
Total¹⁾	51 991		75.2
Total²⁾	48 411	100.0	70.0
For active treatment	37 442	77.3	54.1
<i>Intensive care</i>	2 195	4.5	3.2
internal medicine	8	0.0	0.0
cardiology	170	0.4	0.3
pediatrics	83	0.2	0.2
general surgery	22	0.0	0.0
neurology	61	0.1	0.1
obstetrics and gynecology	12	0.0	0.0
neurosurgery	-	-	-
intensive care ward	1 137	2.3	1.6
other	702	1.5	1.0
of them: COVID 19	657	1.4	0.9
<i>Obstetric-gynecological</i>	2 938	6.1	4.2
gynecology	1 120	2.3	1.6
obstetrics	1 196	2.5	1.7
pathological pregnancy	563	1.2	0.8
assisted reproduction	59	0.1	0.1
<i>Pediatric</i>	3 921	8.1	5.7
neonatology	1 431	3.0	2.1
pediatrics	2 271	4.7	3.3
<i>Therapeutic</i>	20 331	42.0	29.4
internal medicine	881	1.8	1.3
gastroenterology	1 247	2.6	1.8
endocrinology	593	1.2	0.9
cardiology	2 127	4.4	3.1
nephrology	488	1.0	0.7
rheumatology	367	0.8	0.5
pulmonology and pthisiology	1 347	2.8	1.9

¹⁾ Hospital beds of other administrations are included, but not allocated by type.

²⁾ Hospital beds of other administrations are not included.

2. Beds in Hospitals on 31.XII.2020 by Type

(continued from previous)

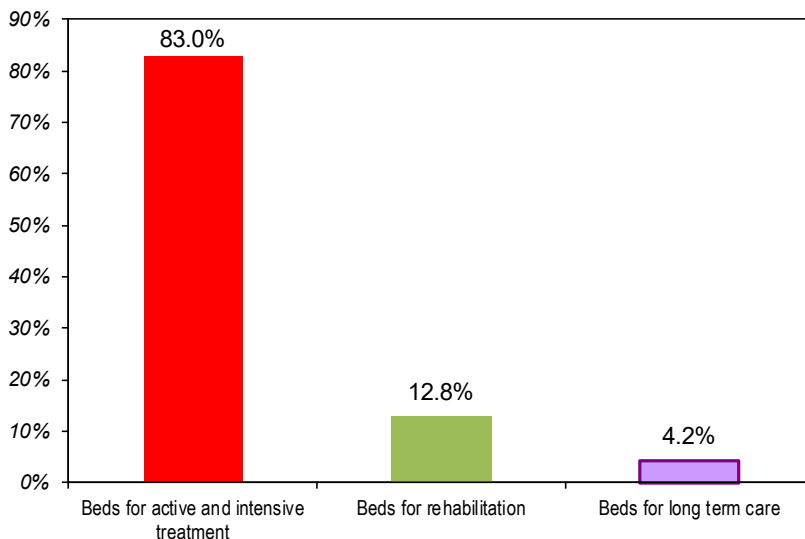
<i>Type of beds</i>	<i>Number</i>	<i>Structure (%)</i>	<i>Per 10 000 population</i>
clinical toxicology	40	0.1	0.1
clinical haematology	595	1.2	0.9
infectious diseases	1 504	3.1	2.2
incl. COVID 19	1 268	2.6	1.8
neurology	2 472	5.1	3.6
dermato-venerology	178	0.4	0.3
medical oncology	950	2.0	1.4
radiotherapy	354	0.7	0.5
COVID 19 ³⁾	7 162	14.8	10.4
<i>Surgical</i>	8 057	16.6	11.6
general surgery	2 801	5.8	4.0
cardiosurgery	222	0.5	0.3
neurosurgery	406	0.8	0.6
orthopedics and traumatology	1 631	3.4	2.4
vascular surgery	459	0.9	0.7
urology	834	1.7	1.2
ophthalmology	532	1.1	0.8
oto-rhino-laryngology	587	1.2	0.8
For long term treatment	1 606	3.3	2.3
<i>For continuing treatment</i>	1 542	3.2	2.2
internal medicine	333	0.7	0.5
cardiology	24	0.0	0.0
rheumatology	-	-	-
pulmonology and phthiology	589	1.2	0.9
orthopedics and traumatology	134	0.3	0.2
neurology	262	0.5	0.4
<i>For palliative care</i>	64	0.1	0.1
For rehabilitation	6 437	13.3	9.4
Psychiatric	2 926	6.1	4.2
for active treatment	2 446	5.1	3.5
for long term care	480	1.0	0.7
Places for short stay	1 561		2.3
psychiatric	472		0.7

³⁾ Transformed by other beds out of the infectious beds.

3. Beds in Hospitals and Other Healthcare Establishments on 31.XII.2020 r. by Type¹⁾

Type of beds	Number	Structure (%)	Per 10 000 population
Total²⁾	54 216		78.4
Total³⁾	50 636	100.0	73.2
Beds for active and intensive treatment	42 053	83.0	60.8
Beds for rehabilitation	6 437	12.8	9.3
Beds for long term care	2 146	4.2	3.1
Other beds	-	-	-
Psychiatric beds	3 914	7.7	5.7
Places for short stay	2 506		

percentage



¹⁾ According to statistical grouping used by Eurostat.

²⁾ Hospital beds of other administrations included, but not allocated by type.

³⁾ Hospital beds of other administrations not included.

IV. MEDICAL PERSONNEL

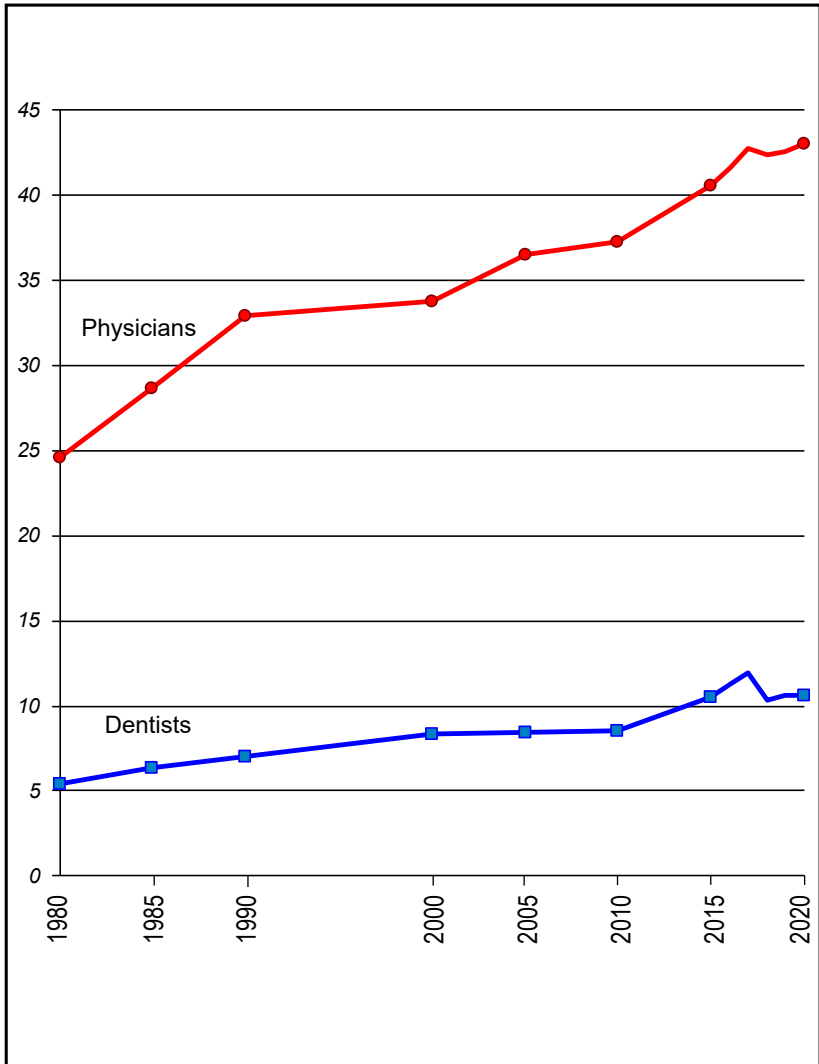
1. Medical Personnel¹⁾

	1990	2000	2010	2018	2019	2020
Number						
Physicians	28 497	27 526	27 997	29 667	29 612	29 717
Dentists	6 109	6 778	6 355	7 240	7 376	7 312
Auxiliary medical personnel	88 387	49 840	47 468	46 332	46 491	44 676
incl.:						
med. assistants	7 617	3 158	2 417	2 145	2 011	1 919
midwives	7 544	4 131	3 247	3 155	3 269	3 251
nurses	53 810	31 479	31 786	30 589	30 546	29 160
clinical laboratory and X-ray technicians	7 604	5 964	5 765	5 978	6 009	5 909
dental technicians	2 858	1 305	1 280	1 624	1 702	1 573
other	8 954	3 803	2 973	2 841	2 954	2 864
Per 10 000 population						
Physicians	32.9	33.8	37.3	42.4	42.6	43.0
Dentists	7.0	8.3	8.5	10.3	10.6	10.6
Auxiliary medical personnel	102.0	61.2	63.2	66.2	66.9	64.6
Population per:						
one physician	304	296	268	236	235	233
one dentist	1 419	1 202	1 181	967	942	946

¹⁾ NSI data

Medical Personnel

(per 10000 population)



2. Physicians by Speciality¹⁾

<i>Specialities</i>	2019		2020	
	<i>number</i>	<i>per 10000 population</i>	<i>number</i>	<i>per 10000 population</i>
Physicians – total²⁾	29 612	42.6	29 717	43.0
<i>Clinical specialties</i>	24 533	35.3	24 812	35.9
obstetrics and gynecology	1 737	2.5	1 766	2.6
anesthesiology and intensive care	1 639	2.4	1 669	2.4
internal medicine	981	1.4	935	1.4
gastroenterology	658	0.9	693	1.0
endocrinology and metabolic diseases	715	1.0	718	1.0
infectious diseases	210	0.3	233	0.3
cardiology	1 795	2.6	1 850	2.7
laboratory medicine	631	0.9	640	0.9
clinical hematology	174	0.3	181	0.3
dermatology and venereology	455	0.7	452	0.7
radiotherapy	107	0.2	113	0.2
medical oncology	230	0.3	251	0.4
neurosurgery	199	0.3	196	0.3
neonatology	258	0.4	268	0.4
neurology	1 475	2.1	1 455	2.1
nephrology	459	0.7	470	0.7
radiology	939	1.4	948	1.4
orthopedics and traumatology	1 001	1.4	1 001	1.4
ophthalmology	1 025	1.5	1 055	1.5
pediatrics	1 416	2.0	1 412	2.0
pulmonology and phthisiology	610	0.9	601	0.9
psychiatry	699	1.0	681	1.0
rheumatology	222	0.3	216	0.3
emergency medicine	1 282	1.8	1 313	1.9
urology	529	0.8	511	0.7
otorhinolaryngology	683	1.0	689	1.0
physical and rehabilitation medicine	646	0.9	654	0.9
general surgery	1 544	2.2	1 517	2.2
<i>Non-clinical specialties</i>	836	1.2	765	1.1
<i>Individual and group practices for primary care</i>	4119	5.9	4015	5.8
<i>Unallocated by specialties</i>	124	0.2	125	0.2

¹⁾ NSI data

²⁾ Oncologists are divided into main specialties

V. ACTIVITIES OF THE HEALTH FACILITIES

1. Activities of the Inpatient Wards of the Hospital Health Care Facilities in 2020

<i>Type of establishments</i>	<i>Admitted</i>	<i>Discharged</i>	<i>Deceased</i>	<i>Bed days</i>
Healthcare establishments for hospital care – total¹⁾	1 798 452	1 763 778	35 197	9 251 716
Multiprofile hospitals	958 021	929 882	28 649	4 814 387
Multiprofile hospital for active treatment	955 791	927 658	28 643	4 797 802
Specialized hospitals	200 531	200 031	729	1 341 458
Specialized hospital for active treatment	121 355	120 814	623	636 580
Specialized hospital for long term treatment and rehabilitation	13 870	13 868	105	205 979
Specialized hospital for rehabilitation	63 512	63 532	-	463 368
Psychiatric hospitals	7 243	7 374	68	571 117
Private facilities for hospital care	632 657	626 491	5 751	2 524 754
Integral oncological centers	60 922	60 280	648	248 897
Centers for dermato-venereological diseases	1 279	1 281	-	8 275
Centers for mental health	13 050	13 030	18	329 575

¹⁾ Excl. facilities of other administrations.

1. Activities of the Inpatient Wards of the Hospital Health Care Facilities in 2020

(continued from previous)

<i>Type of establishments</i>	<i>Utilization of beds (%)</i>	<i>Turnover of beds</i>	<i>Average length of stay (days)</i>	<i>Hospital mortality (%)</i>
Healthcare establishments for hospital care – total¹⁾	53.0	38	5.1	2.0
Multiprofile hospitals	50.9	37	5.0	3.0
Multiprofile hospital for active treatment	50.9	37	5.0	3.0
Specialized hospitals	56.0	31	6.6	0.4
Specialized hospital for active treatment	59.3	42	5.2	0.5
Specialized hospital for long term treatment and rehabilitation	63.0	16	14.5	0.8
Specialized hospital for rehabilitation	49.1	25	7.3	-
Psychiatric hospitals	74.0	4	65.0	0.9
Private facilities for hospital care	52.1	48	4.0	0.9
Integral oncological centers	58.1	52	4.1	1.1
Centers for dermato-venerological diseases	75.6	43	6.5	-
Centers for mental health	88.5	13	24.0	0.1

¹⁾ Excl. facilities of other administrations.

2. Utilization, Turnover and Average Length of Stay in Health Care Facilities in 2020 by Type of Beds

<i>Type of beds</i>	<i>Utilization (%)</i>	<i>Turnover</i>	<i>Average length of stay (days)</i>
Total¹⁾	53.0	38	5.1
For active treatment	52.8	50	3.9
<i>Intensive care</i>	45.7	52	3.2
internal medicine	56.1	65	3.2
cardiology	45.7	74	2.2
pediatrics	63.0	41	5.6
general surgery	65.6	45	5.3
neurology	66.3	47	5.1
obstetrics and gynecology	53.8	192	1.0
neurosurgery	-	-	-
intensive care ward	46.9	57	3.0
other	31.6	20	5.9
of them: COVID 19	33.3	19	6.5
<i>Obstetric-gynecological</i>	52.3	64	3.0
gynecology	49.8	66	2.7
obstetrics	54.8	60	3.3
pathological pregnancy	54.9	68	2.9
assisted reproduction	22.4	80	1.0
<i>Pediatric</i>	49.3	38	4.7
neonatology	57.2	44	4.8
pediatrics	44.7	35	4.7
<i>Therapeutic</i>	54.0	46	4.3
internal medicine	50.5	40	4.6
gastroenterology	57.8	61	3.4
endocrinology	47.1	49	3.5
cardiology	49.8	59	3.1
nephrology	51.1	42	4.4
rheumatology	49.8	60	3.0
pulmonology and phtisiology	61.5	33	6.7
clinical toxicology	43.3	69	2.3

¹⁾ Excl. facilities of other administrations.

2. Utilization, Turnover and Average Length of Stay in Health Care Facilities in 2020 by Type of Beds

(continued from previous)

<i>Type of beds</i>	<i>Utilization (%)</i>	<i>Turnover</i>	<i>Average length of stay (days)</i>
clinical haematology	69.7	62	4.1
infectious diseases	49.8	31	5.9
incl. COVID 19	49.3	24	7.5
neurology	56.1	45	4.5
dermato-venerology	53.9	29	6.9
medical oncology	62.0	114	2.0
radiotherapy	83.4	19	16.0
COVID 19 ²⁾	40.7	19	7.7
Surgical	54.0	58	3.4
general surgery	57.3	57	3.7
cardiosurgery	42.1	41	3.7
neurosurgery	59.7	49	4.4
orthopedics and traumatology	54.6	52	3.9
vascular surgery	55.8	54	3.8
urology	55.4	64	3.2
ophthalmology	42.3	96	1.6
oto-rhino-laryngology	47.7	58	3.0
For long term treatment	37.0	9	15.5
For continuing treatment	37.0	9	15.8
internal medicine	13.5	3	14.1
cardiology	0.2	0	10.0
rheumatology	-	-	-
pulmonology and phthysiology	67.2	13	19.0
orthopedics and traumatology	35.1	14	9.4
neurology	21.7	8	10.1
For palliative care	38.3	14	10.0
For rehabilitation	48.7	24	7.4
Psychiatric	73.2	7	37.5
for active treatment	73.9	8	34.2
for long term care	69.7	3	77.3

²⁾ Transformed by other beds out of the infectious beds.

3. Women in childbirth served at inpatient healthcare facilities

	2000	2005	2015	2019	2020
Women that gave birth at healthcare facilities	71 107	67 845	60 700	55 682	54 846
incl. cases of:					
transverse and oblique positions of the fetus	234	327	481	593	713
of these: unattended	23	19	20	132	96
Narrow pelvis	857	715	1 442	1 217	1 357
pelvic malpositions	1 693	1 952	1 316	1 416	1 510
complicated by:					
hemorrhages	1 518	884	675	604	683
extragenital diseases	629	779	702	935	1 509
of these: cardiovascular	148	160	94	115	447
diabetes mellitus	79	128	225	261	454
Women admitted after childbirth outside health facilities	793	401	250	203	169
Total number of women in childbirth served	71 900	68 246	60 950	55 885	55 015
incl.: multiple gestation	614	582	986	1 052	955
women that gave birth after assisted reproduction	.	.	.	1 379	1 587
Distribution of women in childbirth by age					
up to 19 years of age	12 669	9 863	6 055	5 373	5 361
from 20 to 35 years of age	56 185	54 407	47 360	41 835	40 716
above 35 years of age	3 046	3 976	7 535	8 677	8 938

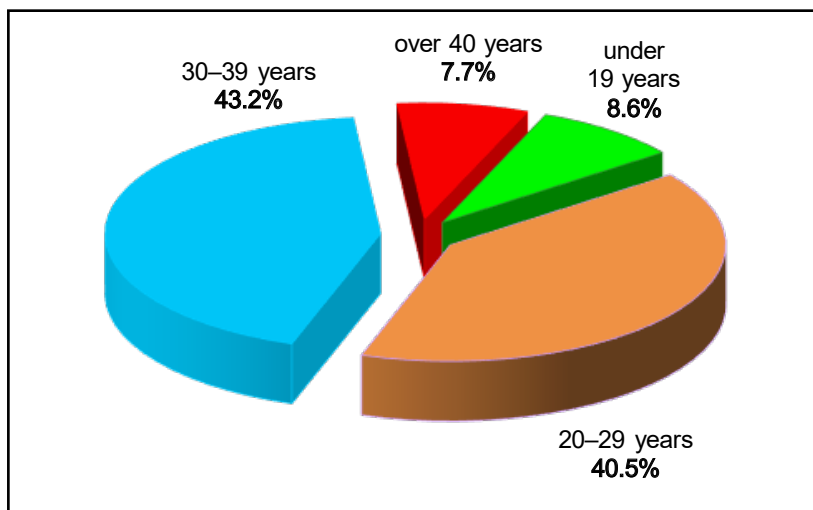
4. Abortions Performed in Health Facilities in 2020 by Age Group and Type of Abortion

(Number)

Age groups	Abortions	by type				
		Spontaneous	Therapeutic	from them:		Other types and abortion, unspecified
				by request	medical indicated	
Total	19 328	5 872	13 451	11 045	2 406	5
< 15	103	51	52	27	25	-
15–19	1 550	563	987	827	160	-
20–24	3 311	873	2 437	2 148	289	1
25–29	4 515	1 351	3 163	2 671	492	1
30–34	4 879	1 428	3 449	2 808	641	2
35–39	3 476	1 123	2 353	1 864	489	-
40–44	1 368	423	944	654	290	1
45–49	115	55	60	43	17	-
> 50	11	5	6	3	3	-

Abortions performed by Age

(percentage)



5. Abortions Performed in Health Facilities

(Number)

	1980	1990	2000	2015	2019	2020
Total	156 056	144 644	61 378	27 782	21 864	19 328
incl.:						
medical indicated	3 830	4 352	2 567	2 630	1 720	2 406
sponta-neous abortions	15 787	12 601	10 626	8 590	6 321	5 872
other	180	91	29	395	3	5
legal abortions	136 259	127 600	48 156	16 167	13 820	11 045

6. Persons Served by the Centers for Urgent Medical Care and Urgent Wards

	2019		2020	
	<i>Number</i>	(%)	<i>Number</i>	(%)
Persons attended – total	2 646 758	100.0	2 265 975	100.0
incl.:				
Centers for urgent medical care	1 234 192	46.6	1 139 494	50.3
incl. at calls performed	673 111	25.4	675 975	29.8
Urgent wards	1 412 566	53.4	1 126 481	49.7

7. Number and Type of Surgeries of Patients, Discharged from Hospitals in 2020

<i>Type of surgery</i>	<i>Discharged surgical patients</i>	<i>incl.:</i>		<i>Lethality (%)</i>
		<i>with compli- cations</i>	<i>dead</i>	
Total	526 273	2 444	4 015	0.8
Surgery of the gastrointestinal tract	59 319	554	1 230	2.1
Apendectomy due to acute appendicitis	4 130	11	11	0.3
Herniotomy due to unobstructed hernia	8 786	13	12	0.1
Obstetrics-gynecological surgeries	100 504	160	21	0.0
Endocrine surgeries	1 780	2	1	0.1
Orthopaedics-traumatology surgeries	88 034	362	538	0.6
Thoracic surgeries	9 969	131	230	2.3
Breast surgery due to neoplasm	5 907	47	5	0.1
Urological surgeries	56 723	211	174	0.3
Otho-Rhino-Larhingological surgeries	29 458	23	44	0.1
Tonsillectomy	1 267	-	-	-
Ophthalmological surgeries	43 052	13	1	0.0
Catharacta	20 551	5	1	0.0
Neurosurgeries	11 372	126	457	4.0
Cardiovascular surgeries	10 499	327	341	3.2
Vascular surgeries	18 189	141	272	1.5
Facial and dental surgeries	7 483	18	13	0.2
Plastic, reconstructive and a esthetic surgeries	9 598	34	33	0.3
Other surgical interventions	74 386	295	655	0.9

**8. Number and Type of Surgeries of Patients,
Discharged from Hospitals in 2020
by type of healthcare facility**

<i>Type of surgery</i>	<i>Total</i>	<i>Multiprofile hospitals for active treatment</i>	<i>Specialized hospitals for active treatment</i>
Total	526 273	244 745	28 329
Surgery of the gastrointestinal tract	59 319	30 354	1 246
Apendectomy due to acute ap- pendicitis	4 130	3 264	4
Herniotomy due to unobstructed hernia	8 786	4 761	127
Obstetrics-gynecological surgeries	100 504	41 620	17 683
Endocrine surgeries	1 780	388	303
Orthopaedics-traumatology surgeries	88 034	45 081	1 535
Thoracic surgeries	9 969	4 466	1 473
Breast surgery due to neoplasm	5 907	1 449	833
Urological surgeries	56 723	26 604	755
Otho-Rhino-Larhingological surgeries	29 458	17 357	191
Tonsillectomy	1 267	634	3
Ophtalmological surgeries	43 052	14 310	2 224
Catharacta	20 551	6 670	948
Neurosurgeries	11 372	7 674	46
Cardiovascular surgeries	10 499	4 382	-
Vascular surgeries	18 189	5 891	82
Facial and dental surgeries	7 483	6 175	17
Plastic, reconstructive and esthetic surgeries	9 598	3 904	61
Other surgical interventions	74 386	35 090	1 880

**8. Number and Type of Surgeries of Patients,
Discharged from Hospitals in 2020
by type of healthcare facility**

(continued from previous)

<i>Type of surgery</i>	<i>Private facilities for hospital care</i>	<i>Other facilities for hospital care</i>	<i>Integral oncological centers</i>
Total	216 657	25 780	10 762
Surgery of the gastrointestinal tract	22 005	4 417	1 297
Apendectomy due to acute appendicitis	707	151	4
Herniotomy due to unobstructed hernia	2 937	867	94
Obstetrics-gynecological surgeries	37 923	1 037	2 241
Endocrine surgeries	925	151	13
Orthopaedics-traumatology surgeries	37 193	4 223	2
Thoracic surgeries	3 145	740	145
Breast surgery due to neoplasm	1 080	470	2 075
Urological surgeries	24 981	2 938	1 445
Otho-Rhino-Larhingological surgeries	10 835	849	226
Tonsillectomy	535	95	-
Ophtalmological surgeries	24 865	1 653	-
Catharacta	11 651	1 282	-
Neurosurgeries	3 264	388	-
Cardiovascular surgeries	6 117	-	-
Vascular surgeries	11 524	662	30
Facial and dental surgeries	1 262	29	-
Plastic, reconstructive and esthetic surgeries	5 283	345	5
Other surgical interventions	26 255	7 878	3 283

VI. ECONOMIC INDICATORS OF THE HEALTH FACILITIES FOR 2020

(in leva)

<i>Types of health facilities</i>	Average costs:				
	per patient	per bed	per bed day	per medicine day	per food day
Multiprofile hospital for active treatment					
University and national	2 035.61	81 013	404.80	156.26	3.33
Regional	1 136.99	43 935	224.39	37.51	2.47
Municipal	929.56	30 828	191.59	17.81	2.17
Specialized hospital for active treatment					
University and national	2 689.22	115 219	528.35	305.30	1.73
Pulmonary diseases	1 292.01	26 214	113.44	17.46	2.86
Obstetries and gynecological diseases	883.50	42 956	204.37	24.54	1.93
State psychiatric hospitals	4 244.56	17 632	65.30	1.90	2.69
Pulmophthysiatrical diseases	920.76	23 052	109.25	13.92	3.73
Other healthcare establishments for hospital care					
Specializes oncological hospitals and centers	2 939.57	155 960	752.46	540.19	2.75
Centers for dermato-venerological diseases	572.58	24 449	88.64	7.26	2.16
Centers for mental health	1 633.54	21 984	68.04	1.86	3.76

VII. REVIEW BY REGIONS

1. Population on 31.XII.2020¹⁾

<i>Regions</i>	<i>Total</i>	<i>Male</i>	<i>Female</i>	<i>Urban</i>	<i>Rural</i>
Number					
Total	6 916 548	3 349 715	3 566 833	5 043 186	1 873 362
Blagoevgrad	301 138	146 369	154 769	181 513	119 625
Burgas	409 750	197 692	212 058	311 247	98 503
Varna	470 124	228 625	241 499	390 916	79 208
V. Tarnovo	229 718	110 803	118 915	160 186	69 532
Vidin	81 212	39 487	41 725	52 439	28 773
Vratca	157 637	77 196	80 441	92 639	64 998
Gabrovo	105 788	50 874	54 914	84 546	21 242
Dobrich	170 298	82 505	87 793	116 994	53 304
Kardzhali	160 781	79 430	81 351	64 686	96 095
Kyustendil	116 619	56 699	59 920	80 924	35 695
Lovech	122 490	59 580	62 910	75 680	46 810
Montana	125 395	61 166	64 229	79 817	45 578
Pazardzhik	251 300	122 821	128 479	157 414	93 886
Pernik	120 426	58 550	61 876	93 788	26 638
Pleven	233 438	113 082	120 356	153 832	79 606
Plovdiv	666 398	319 851	346 547	498 739	167 659
Razgrad	109 810	53 467	56 343	51 160	58 650
Ruse	212 729	103 521	109 208	162 914	49 815
Silistra	106 852	52 049	54 803	46 750	60 102
Sliven	182 551	88 576	93 975	119 023	63 528
Smolyan	101 887	48 940	52 947	57 776	44 111
Sofia-capital	1 308 412	627 198	681 214	1 249 277	59 135
Sofia	238 476	117 261	121 215	140 641	97 835
St. Zagora	311 400	150 524	160 876	216 888	94 512
Targovishte	110 027	53 665	56 362	59 592	50 435
Haskovo	223 625	109 127	114 498	160 813	62 812
Shumen	171 781	83 696	88 085	102 877	68 904
Yambol	116 486	56 961	59 525	80 115	36 371

¹⁾ NSI data

1. Population on 31.XII.2020

(continued from previous)

<i>Regions</i>	<i>Total</i>	<i>Male</i>	<i>Female</i>	<i>Urban</i>	<i>Rural</i>
Percentage (%)					
Total	100.0	48.4	51.6	72.9	27.1
Blagoevgrad	100.0	48.6	51.4	60.3	39.7
Burgas	100.0	48.2	51.8	76.0	24.0
Varna	100.0	48.6	51.4	83.2	16.8
V. Tarnovo	100.0	48.2	51.8	69.7	30.3
Vidin	100.0	48.6	51.4	64.6	35.4
Vratca	100.0	49.0	51.0	58.8	41.2
Gabrovo	100.0	48.1	51.9	79.9	20.1
Dobrich	100.0	48.4	51.6	68.7	31.3
Kardzhali	100.0	49.4	50.6	40.2	59.8
Kyustendil	100.0	48.6	51.4	69.4	30.6
Lovech	100.0	48.6	51.4	61.8	38.2
Montana	100.0	48.8	51.2	63.7	36.3
Pazardzhik	100.0	48.9	51.1	62.6	37.4
Pernik	100.0	48.6	51.4	77.9	22.1
Pleven	100.0	48.4	51.6	65.9	34.1
Plovdiv	100.0	48.0	52.0	74.8	25.2
Razgrad	100.0	48.7	51.3	46.6	53.4
Ruse	100.0	48.7	51.3	76.6	23.4
Silistra	100.0	48.7	51.3	43.8	56.2
Sliven	100.0	48.5	51.5	65.2	34.8
Smolyan	100.0	48.0	52.0	56.7	43.3
Sofia-capital	100.0	47.9	52.1	95.5	4.5
Sofia	100.0	49.2	50.8	59.0	41.0
St. Zagora	100.0	48.3	51.7	69.6	30.4
Targovishte	100.0	48.8	51.2	54.2	45.8
Haskovo	100.0	48.8	51.2	71.9	28.1
Shumen	100.0	48.7	51.3	59.9	40.1
Yambol	100.0	48.9	51.1	68.8	31.2

2. Live Births in 2020¹⁾

<i>Regions</i>	<i>Total</i>	<i>Urban</i>	<i>Rural</i>	<i>Total</i>	<i>Urban</i>	<i>Rural</i>
	Number			Per 1000 population		
Total	59 086	43 829	15 257	8.5	8.6	8.2
Blagoevgrad	2 655	1 648	1 007	8.8	9.1	8.4
Burgas	3 492	2 575	917	8.5	8.2	9.4
Varna	4 219	3 543	676	9.0	9.0	8.8
V. Tarnovo	1 662	1 197	465	7.2	7.4	6.8
Vidin	473	293	180	5.8	5.5	6.2
Vratca	1 334	737	597	8.4	7.9	9.1
Gabrovo	622	489	133	5.9	5.7	6.6
Dobrich	1 224	819	405	7.2	7.0	7.6
Kardzhali	1 171	536	635	7.3	8.3	6.7
Kyustendil	793	594	199	6.8	7.3	5.6
Lovech	982	593	389	8.0	7.8	8.4
Montana	923	580	343	7.3	7.2	7.5
Pazardzhik	2 123	1 274	849	8.4	8.1	9.0
Pernik	803	699	104	6.7	7.4	4.1
Pleven	1 923	1 203	720	8.2	7.7	9.1
Plovdiv	6 062	4 558	1 504	9.1	9.1	9.1
Razgrad	803	356	447	7.3	6.9	7.6
Ruse	1 505	1 194	311	7.0	7.2	6.4
Silistra	796	308	488	7.4	6.5	8.1
Sliven	2 144	1 260	884	11.7	10.5	14.0
Smolyan	631	393	238	6.1	6.8	5.3
Sofia-capital	13 108	12 640	468	9.9	10.0	7.9
Sofia	2 079	1 319	760	8.9	9.4	8.2
St. Zagora	2 773	1 916	857	8.9	8.6	9.5
Targovishte	793	428	365	7.2	7.2	7.2
Haskovo	1 670	1 188	482	7.4	7.3	7.7
Shumen	1 225	707	518	7.1	6.8	7.6
Yambol	1 098	782	316	9.4	9.6	8.9

¹⁾ NSI data

3. Deaths in 2020¹⁾

<i>Regions</i>	<i>Total</i>	<i>Urban</i>	<i>Rural</i>	<i>Total</i>	<i>Urban</i>	<i>Rural</i>
	Number			Per 1000 population		
Total	124 735	79 952	44 783	18.0	15.7	24.2
Blagoevgrad	4 963	2 673	2 290	16.4	14.7	19.1
Burgas	6 200	4 275	1 925	15.1	13.7	19.8
Varna	6 930	5 282	1 648	14.7	13.4	21.4
V. Tarnovo	4 499	2 494	2 005	19.5	15.4	29.2
Vidin	2 269	1 064	1 205	27.7	20.0	41.7
Vratca	3 539	1 613	1 926	22.3	17.3	29.5
Gabrovo	2 544	1 805	739	24.0	21.0	36.4
Dobrich	3 262	2 064	1 198	19.1	17.5	22.5
Kardzhali	2 290	814	1 476	14.4	12.7	15.5
Kyustendil	2 807	1 671	1 136	24.0	20.5	32.1
Lovech	2 754	1 436	1 318	22.5	18.8	28.6
Montana	3 216	1 664	1 552	25.5	20.6	34.2
Pazardzhik	4 807	2 867	1 940	19.1	18.1	20.7
Pernik	2 755	1 843	912	23.0	19.6	35.7
Pleven	5 100	2 818	2 282	21.7	18.1	28.9
Plovdiv	11 569	7 796	3 773	17.4	15.5	22.9
Razgrad	2 367	1 015	1 352	21.5	19.6	23.1
Ruse	4 394	2 980	1 414	20.5	18.0	29.2
Silistra	2 302	1 021	1 281	21.4	21.6	21.3
Sliven	3 313	2 021	1 292	18.1	16.8	20.4
Smolyan	2 107	958	1 149	20.5	16.5	25.8
Sofia-capital	17 721	16 731	990	13.4	13.3	16.8
Sofia	4 926	2 536	2 390	21.2	18.1	25.8
St. Zagora	5 935	3 625	2 310	19.0	16.3	25.5
Targovishte	2 181	1 029	1 152	19.7	17.2	22.7
Haskovo	4 420	2 704	1 716	19.7	16.7	27.4
Shumen	3 116	1 736	1 380	18.1	16.7	20.3
Yambol	2 449	1 417	1 032	20.9	17.4	29.2

¹⁾ NSI data

4. Natural Growth of Population in 2020¹⁾

<i>Regions</i>	<i>Total</i>	<i>Urban</i>	<i>Rural</i>	<i>Total</i>	<i>Urban</i>	<i>Rural</i>
	Number			Per 1000 population		
Total	-65 649	-36 123	-29 526	-9.5	-7.1	-16.0
Blagoevgrad	-2 308	-1 025	-1 283	-7.6	-5.6	-10.7
Burgas	-2 708	-1 700	-1 008	-6.6	-5.5	-10.4
Varna	-2 711	-1 739	-972	-5.7	-4.4	-12.6
V. Tarnovo	-2 837	-1 297	-1 540	-12.3	-8.0	-22.4
Vidin	-1 796	-771	-1 025	-21.9	-14.5	-35.5
Vratca	-2 205	-876	-1 329	-13.9	-9.4	-20.4
Gabrovo	-1 922	-1 316	-606	-18.1	-15.3	-29.8
Dobrich	-2 038	-1 245	-793	-11.9	-10.5	-14.9
Kardzhali	-1 119	-278	-841	-7.1	-4.4	-8.8
Kyustendil	-2 014	-1 077	-937	-17.2	-13.2	-26.5
Lovech	-1 772	-843	-929	-14.5	-11.0	-20.2
Montana	-2 293	-1 084	-1 209	-18.2	-13.4	-26.7
Pazardzhik	-2 684	-1 593	-1 091	-10.7	-10.0	-11.7
Pernik	-1 952	-1 144	-808	-16.3	-12.2	-31.6
Pleven	-3 177	-1 615	-1 562	-13.5	-10.4	-19.8
Plovdiv	-5 507	-3 238	-2 269	-8.3	-6.4	-13.8
Razgrad	-1 564	-659	-905	-14.2	-12.7	-15.5
Ruse	-2 889	-1 786	-1 103	-13.5	-10.8	-22.8
Silistra	-1 506	-713	-793	-14.0	-15.1	-13.2
Sliven	-1 169	-761	-408	-6.4	-6.3	-6.4
Smolyan	-1 476	-565	-911	-14.4	-9.7	-20.5
Sofia-capital	-4 613	-4 091	-522	-3.5	-3.3	-8.9
Sofia	-2 847	-1 217	-1 630	-12.3	-8.7	-17.6
St. Zagora	-3 162	-1 709	-1 453	-10.1	-7.7	-16.0
Targovishte	-1 388	-601	-787	-12.5	-10.0	-15.5
Haskovo	-2 750	-1 516	-1 234	-12.3	-9.4	-19.7
Shumen	-1 891	-1 029	-862	-11.0	-9.9	-12.7
Yambol	-1 351	-635	-716	-11.5	-7.8	-20.3

¹⁾ NSI data

5. Infant Mortality in 2020¹⁾

<i>Regions</i>	<i>Total</i>	<i>Urban</i>	<i>Rural</i>	<i>Total</i>	<i>Urban</i>	<i>Rural</i>
	Number			Per 1000 live births		
Total	301	196	105	5.1	4.5	6.9
Blagoevgrad	8	6	2	3.0	3.6	2.0
Burgas	25	15	10	7.2	5.8	10.9
Varna	15	11	4	3.6	3.1	5.9
V. Tarnovo	15	7	8	9.0	5.8	17.2
Vidin	2	1	1	4.2	3.4	5.6
Vratca	5	2	3	3.7	2.7	5.0
Gabrovo	4	3	1	6.4	6.1	7.5
Dobrich	7	5	2	5.7	6.1	4.9
Kardzhali	7	2	5	6.0	3.7	7.9
Kyustendil	3	3	-	3.8	5.1	-
Lovech	5	3	2	5.1	5.1	5.1
Montana	10	6	4	10.8	10.3	11.7
Pazardzhik	12	8	4	5.7	6.3	4.7
Pernik	4	3	1	5.0	4.3	9.6
Pleven	11	9	2	5.7	7.5	2.8
Plovdiv	34	24	10	5.6	5.3	6.6
Razgrad	4	1	3	5.0	2.8	6.7
Ruse	3	1	2	2.0	0.8	6.4
Silistra	7	5	2	8.8	16.2	4.1
Sliven	25	8	17	11.7	6.3	19.2
Smolyan	3	3	-	4.8	7.6	-
Sofia-capital	31	31	-	2.4	2.5	-
Sofia	11	7	4	5.3	5.3	5.3
St. Zagora	14	9	5	5.0	4.7	5.8
Targovishte	3	1	2	3.8	2.3	5.5
Haskovo	14	10	4	8.4	8.4	8.3
Shumen	10	6	4	8.2	8.5	7.7
Yambol	9	6	3	8.2	7.7	9.5

¹⁾ NSI data

6. Registered Cases of Certain Infectious Diseases Subject to Obligatory Reporting in 2020

(per 100 000 population)

<i>Regions</i>	<i>Scarlet fever</i>	<i>Pertussis</i>	<i>Chicken pox</i>	<i>Mumps</i>	<i>Lyme disease</i>
Total	14.6	0.4	176.9	0.2	2.3
Blagoevgrad	3.0	0.3	87.4	-	1.0
Burgas	9.3	-	166.3	-	1.2
Varna	28.5	-	319.8	-	1.1
V. Tarnovo	12.5	-	183.0	-	3.0
Vidin	7.3	-	170.7	-	3.7
Vratca	9.5	0.6	152.6	-	0.6
Gabrovo	17.9	-	308.9	-	28.3
Dobrich	7.0	0.6	174.8	-	2.3
Kardzhali	0.6	-	222.6	-	-
Kyustendil	6.0	0.9	120.8	0.9	0.9
Lovech	15.5	-	131.4	-	1.6
Montana	10.3	-	194.9	-	11.1
Pazardzhik	1.2	-	20.6	-	-
Pernik	9.2	0.8	187.0	0.8	8.3
Pleven	37.0	0.4	117.5	-	3.4
Plovdiv	14.4	0.6	152.1	-	1.2
Razgrad	4.5	-	163.2	-	15.4
Ruse	14.0	-	426.4	1.4	9.8
Silistra	6.5	-	76.3	-	2.8
Sliven	3.8	-	130.4	-	-
Smolyan	3.9	-	137.3	1.0	-
Sofia-capital	24.2	0.9	211.1	0.3	-
Sofia	1.7	0.9	89.9	0.4	0.9
St. Zagora	18.6	-	90.9	1.0	1.6
Targovishte	25.3	-	237.2	-	4.5
Haskovo	8.0	-	135.4	-	1.3
Shumen	12.8	-	259.9	-	1.7
Yambol	11.1	2.6	62.4	-	-

6. Registered Cases of Certain Infectious Diseases Subject to Obligatory Reporting in 2020

(per 100 000 population)

<i>Regions</i>	<i>Shigellosis</i>	<i>Viral hepatitis</i>	<i>Meningitis and meningoencephalitis</i>	
			<i>bacterial</i>	<i>viral</i>
Total	0.7	24.0	0.6	1.0
Blagoevgrad	5.0	6.3	-	0.3
Burgas	0.5	71.1	0.7	0.7
Varna	0.6	7.4	1.3	2.8
V. Tarnovo	0.4	10.0	0.4	3.9
Vidin	1.2	3.7	-	3.7
Vratca	-	20.2	-	-
Gabrovo	-	25.4	-	-
Dobrich	-	6.4	1.2	-
Kardzhali	-	3.1	-	0.6
Kyustendil	5.1	26.5	0.9	-
Lovech	-	67.7	-	0.8
Montana	-	27.7	-	-
Pazardzhik	0.4	1.6	-	-
Pernik	-	30.9	-	-
Pleven	0.4	61.3	1.7	0.4
Plovdiv	0.2	11.6	0.9	0.9
Razgrad	-	2.7	-	-
Ruse	-	10.7	1.4	-
Silistra	-	4.7	-	-
Sliven	1.1	69.3	0.5	-
Smolyan	1.0	7.8	1.0	1.0
Sofia-capital	0.5	9.5	0.2	0.8
Sofia	0.4	15.5	-	-
St. Zagora	0.3	97.3	1.9	4.2
Targovishte	-	30.8	-	0.9
Haskovo	-	43.7	0.9	1.8
Shumen	1.2	8.1	1.2	-
Yambol	1.7	25.7	-	1.7

7. Registered Cases of Active Tuberculosis in 2020

<i>Regions</i>	<i>New cases and relapses</i>	
	<i>number</i>	<i>per 100 000 population</i>
Total	901	13.0
Blagoevgrad	50	16.6
Burgas	71	17.3
Varna	46	9.8
V. Tarnovo	29	12.5
Vidin	15	18.3
Vratca	55	34.7
Gabrovo	23	21.7
Dobrich	28	16.4
Kardzhali	4	2.5
Kyustendil	4	3.4
Lovech	17	13.9
Montana	18	14.3
Pazardzhik	23	9.1
Pernik	23	19.2
Pleven	35	14.9
Plovdiv	122	18.3
Razgrad	16	14.5
Ruse	30	14.0
Silistra	25	23.3
Sliven	19	10.4
Smolyan	14	13.6
Sofia-capital	60	4.6
Sofia	61	26.2
St. Zagora	36	11.5
Targovishte	10	9.1
Haskovo	38	16.9
Shumen	15	8.7
Yambol	14	12.0

8. Registered New Cases of Malignant Neoplasms in 2020

<i>Regions</i>	<i>Number</i>	<i>Per 100 000 population</i>
Total	27 687	399.3
Blagoevgrad	971	321.6
Burgas	2 063	503.8
Varna	1 906	405.5
V. Tarnovo	896	387.6
Vidin	226	275.5
Vratca	674	425.1
Gabrovo	307	289.1
Dobrich	576	336.7
Kardzhali	733	459.6
Kyustendil	236	202.1
Lovech	451	368.1
Montana	423	335.2
Pazardzhik	860	341.2
Pernik	263	219.5
Pleven	1 172	499.0
Plovdiv	2 998	449.7
Razgrad	340	308.3
Ruse	1 105	516.1
Silistra	381	354.6
Sliven	625	340.9
Smolyan	381	371.0
Sofia-capital	5 499	417.0
Sofia	405	174.1
St. Zagora	1 346	430.9
Targovishte	382	345.8
Haskovo	1 185	527.9
Shumen	712	413.9
Yambol	571	488.4

9. Patients Under Observation of Psychiatric Establishments and Structures by Type of Disease on 31.XII.2020

<i>Regions</i>	<i>Total</i>		<i>Schizophrenia, schizotypal and delusional disorders</i>		<i>incl. Schizophrenia</i>	
	number	per 100 000 population	number	per 100 000 population	number	per 100 000 population
Total	118 778	1 717.3	29 653	428.7	23 189	335.3
Blagoevgrad	14	4.6	8	2.7	8	2.7
Burgas	17 939	4 378.0	2 908	709.7	1 145	279.4
Varna	6	1.3	4	0.9	4	0.9
V. Tarnovo	7 399	3 220.9	1 737	756.1	1 586	690.4
Vidin	-	-	-	-	-	-
Vratca	1 986	1 259.9	977	619.8	939	595.7
Gabrovo	1 922	1 816.8	1 010	954.7	979	925.4
Dobrich	1 453	853.2	848	498.0	839	492.7
Kardzhali	4 600	2 861.0	1 360	845.9	1 152	716.5
Kyustendil	2 138	1 833.3	188	161.2	188	161.2
Lovech	3 951	3 225.6	783	639.2	491	400.8
Montana	1 618	1 290.3	506	403.5	409	326.2
Pazardzhik	-	-	-	-	-	-
Pernik	2 601	2 159.8	724	601.2	600	498.2
Pleven	5 226	2 238.7	1 104	472.9	1 014	434.4
Plovdiv	24 468	3 671.7	4 584	687.9	3 414	512.3
Razgrad	4 939	4 497.8	935	851.5	852	775.9
Ruse	2 419	1 137.1	1 068	502.0	957	449.9
Silistra	101	94.5	57	53.3	57	53.3
Sliven	-	-	-	-	-	-
Smolyan	4 044	3 969.1	1 072	1 052.1	944	926.5
Sofia-capital	10 745	821.2	3 272	250.1	2 759	210.9
Sofia	4 173	1 749.9	1 361	570.7	972	407.6
St. Zagora	6 502	2 088.0	1 813	582.2	892	286.4
Targovishte	1 536	1 396.0	763	693.5	743	675.3
Haskovo	3 518	1 573.2	1 093	488.8	808	361.3
Shumen	1 107	644.4	721	419.7	701	408.1
Yambol	4 373	3 754.1	757	649.9	736	631.8

9. Patients Under Observation of Psychiatric Establishments and Structures by Type of Disease on 31.XII.2020

<i>Regions</i>	<i>Mood [affective] disorders</i>		<i>Neurotic, stress-related and somatoform disorders</i>		<i>Mental retardation</i>	
	number	per 100 000 population	number	per 100 000 population	number	per 100 000 population
Total	20 283	293.3	12 313	178.0	26 015	376.1
Blagoevgrad	6	2.0	-	-	-	-
Burgas	1 367	333.6	3 754	916.2	4 776	1 165.6
Varna	-	-	-	-	-	-
V. Tarnovo	1376	599.0	1 204	524.1	1 294	563.3
Vidin	-	-	-	-	-	-
Vratca	357	226.5	45	28.5	368	233.4
Gabrovo	713	674.0	161	152.2	-	-
Dobrich	172	101.0	29	17.0	168	98.7
Kardzhali	742	461.5	869	540.5	913	567.9
Kyustendil	1 435	1 230.5	167	143.2	20	17.1
Lovech	672	548.6	199	162.5	698	569.8
Montana	208	165.9	231	184.2	349	278.3
Pazardzhik	-	-	-	-	-	-
Pernik	796	661.0	8	6.6	535	444.3
Pleven	648	277.6	444	190.2	1 657	709.8
Plovdiv	3 534	530.3	2 281	342.3	5 435	815.6
Razgrad	1 030	938.0	623	567.3	1 294	1 178.4
Ruse	532	250.1	1	0.5	68	32.0
Silistra	44	41.2	-	-	-	-
Sliven	-	-	-	-	-	-
Smolyan	775	760.6	345	338.6	987	968.7
Sofia-capital	2 621	200.3	427	32.6	2 075	158.6
Sofia	668	280.1	261	109.4	709	297.3
St. Zagora	1 033	331.7	508	163.1	1 769	568.1
Targovishte	678	616.2	-	-	9	8.2
Haskovo	315	140.9	385	172.2	1 110	496.4
Shumen	163	94.9	6	3.5	117	68.1
Yambol	398	341.7	365	313.3	1 664	1 428.5

10. Hospitalized Patients (discharged and deceased) in Hospitals in 2020

<i>Regions</i>	<i>Number</i>	<i>Per 100 000 population</i>
Total	1 963 826	28 321.6
Blagoevgrad	60 649	20 088.0
Burgas	119 617	29 209.9
Varna	106 305	22 617.9
V. Tarnovo	46 527	20 129.1
Vidin	8 640	10 533.5
Vratca	47 750	30 116.1
Gabrovo	23 636	22 257.6
Dobrich	21 634	12 647.5
Kardzhali	20 940	13 129.2
Kyustendil	29 601	25 350.5
Lovech	20 998	17 138.7
Montana	38 206	30 274.6
Pazardzhik	79 507	31 545.6
Pernik	12 621	10 534.4
Pleven	81 358	34 639.3
Plovdiv	325 501	48 830.1
Razgrad	17 897	16 225.7
Ruse	71 069	33 193.8
Silistra	19 354	18 014.6
Sliven	41 140	22 439.8
Smolyan	28 861	28 099.8
Sofia-capital	494 714	37 518.1
Sofia	63 689	27 384.4
St. Zagora	74 032	23 698.0
Targovishte	20 784	18 814.2
Haskovo	44 550	19 846.7
Shumen	26 826	15 594.5
Yambol	17 420	14 900.4

11. Hospitalized Patients (discharged and deceased) in Hospitals of ICD-10 I-XIX by residence in 2020

Regions	Hospitalized patients in region – total (number)	incl.: hospitalized patients from other regions	
		number	percentage
Blagoevgrad	49 804	3 100	6.2
Burgas	75 502	5 458	7.2
Varna	90 159	25 958	28.8
V. Tarnovo	36 498	3 131	8.6
Vidin	8 424	263	3.1
Vratca	39 843	6 181	15.5
Gabrovo	21 249	2 235	10.5
Dobrich	17 081	766	4.5
Kardzhali	19 759	1 421	7.2
Kyustendil	21 595	1 487	6.9
Lovech	20 526	2 158	10.5
Montana	31 569	4 842	15.3
Pazardzhik	64 565	9 363	14.5
Pernik	12 282	756	6.2
Pleven	72 687	23 440	32.2
Plovdiv	257 455	58 429	22.7
Razgrad	17 232	1 089	6.3
Ruse	63 377	13 526	21.3
Silistra	18 677	1 572	8.4
Sliven	38 176	5 052	13.2
Smolyan	17 405	1 116	6.4
Sofia-capital	412 929	153 527	37.2
Sofia	54 069	22 677	41.9
St. Zagora	60 535	12 684	21.0
Targovishte	19 774	3 939	19.9
Haskovo	41 223	2 197	5.3
Shumen	21 138	2 226	10.5
Yambol	16 971	1 692	10.0

12. Primary Disability of Persons in 2020

Regions	Persons under 16 years age		Persons over 16 years age	
	number	per 1 000 persons under 16 years age	number	per 1 000 persons over 16 years age
Total	3 079	2.9	52 879	9.0
Blagoevgrad	116	2.4	2 104	8.3
Burgas	151	2.2	3 202	9.4
Varna	196	2.6	3 026	7.7
V. Tarnovo	101	3.2	1 501	7.5
Vidin	72	6.8	1 040	14.6
Vratca	122	5.2	1 662	12.3
Gabrovo	41	3.1	1 034	11.1
Dobrich	50	1.9	1 188	8.2
Kardzhali	55	2.3	2 428	17.9
Kyustendil	54	3.6	1 124	11.1
Lovech	55	3.1	1 236	11.8
Montana	67	3.6	1 255	11.6
Pazardzhik	91	2.2	1 923	9.1
Pernik	53	3.3	724	7.0
Pleven	88	2.5	2 564	12.8
Plovdiv	255	2.4	4 352	7.7
Razgrad	28	1.7	924	9.8
Ruse	74	2.5	1 407	7.6
Silistra	31	2.0	1 019	11.1
Sliven	93	2.6	1 240	8.4
Smolyan	33	2.6	849	9.4
Sofia-capital	673	3.2	7 172	6.5
Sofia	91	2.7	1 591	8.0
St. Zagora	143	2.9	2 263	8.6
Targovishte	29	1.7	750	8.1
Haskovo	162	4.7	2 527	13.3
Shumen	68	2.7	1 774	12.1
Yambol	87	4.6	1 000	10.2

13. Beds in Hospitals on 31.XII.2020

<i>Regions</i>	<i>Number</i>	<i>Per 10 000 population</i>
Total¹⁾	51 991	75.2
Blagoevgrad	1 758	58.4
Burgas	2 640	64.4
Varna	2 665	56.7
V. Tarnovo	1 300	56.6
Vidin	335	41.3
Vratca	1 002	63.6
Gabrovo	905	85.5
Dobrich	665	39.0
Kardzhali	826	51.4
Kyustendil	1 004	86.1
Lovech	1 003	81.9
Montana	994	79.3
Pazardzhik	2 011	80.0
Pernik	447	37.1
Pleven	2 370	101.5
Plovdiv	6 292	94.4
Razgrad	553	50.4
Ruse	1 587	74.6
Silistra	483	45.2
Sliven	1 072	58.7
Smolyan	1 020	100.1
Sofia-capital	10 823	82.7
Sofia	1 661	69.7
St. Zagora	2 206	70.8
Targovishte	625	56.8
Haskovo	1 016	45.4
Shumen	696	40.5
Yambol	452	38.8

¹⁾ Beds belonging to other administrations are included, but not allocated by regions.

14. Beds¹⁾ in Hospitals and Other Healthcare Establishments on 31.XII.2020 by Type²⁾

Regions	Total	incl.:				Psychiatric beds
		Beds for active and intensive care	Beds for rehabilitation	Beds for continuing care	Other beds	
Number						
Total	50 636	42 053	6 437	2 146	-	3 914
Blagoevgrad	1 838	1 440	375	23	-	80
Burgas	2 928	1 735	1 100	93	-	132
Varna	2 665	2 417	239	9	-	165
V. Tarnovo	1 576	1 194	307	75	-	200
Vidin	335	307	20	8	-	19
Vratca	1 197	916	118	163	-	40
Gabrovo	905	696	21	188	-	108
Dobrich	755	607	110	38	-	166
Kardzhali	826	774	10	42	-	270
Kyustendil	1 004	648	356	-	-	38
Lovech	1 003	973	14	16	-	407
Montana	994	844	150	-	-	63
Pazardzhik	2 011	1 700	172	139	-	100
Pernik	447	384	50	13	-	25
Pleven	2 370	2 053	62	255	-	115
Plovdiv	6 737	5 848	825	64	-	250
Razgrad	553	520	7	26	-	40
Ruse	1 850	1 702	126	22	-	385
Silistra	483	450	17	16	-	15
Sliven	1 072	970	77	25	-	20
Smolyan	1 060	573	465	22	-	40
Sofia-capital	10 868	9 316	1 183	369	-	325
Sofia	1 709	1 397	255	57	-	45
St. Zagora	2 386	1 686	254	446	-	503
Targovishte	625	625	-	-	-	79
Haskovo	1 096	977	89	30	-	80
Shumen	891	865	25	1	-	179
Yambol	452	436	10	6	-	25

¹⁾ Beds belonging to other administrations are not included.

²⁾ According to statistical grouping used by Eurostat.

14. Beds¹⁾ in Hospitals and Other Healthcare Establishments on 31.XII.2020 by Type²⁾

Regions	Total	incl.:				Psychiatric beds
		Beds for active and intensive care	Beds for rehabilitation	Beds for continuing care	Other beds	
Per 10 000 population						
Total	73.2	60.8	9.3	3.1	-	5.7
Blagoevgrad	61.0	47.8	12.4	0.8	-	2.7
Burgas	71.5	42.3	26.9	2.3	-	3.2
Varna	56.7	51.4	5.1	0.2	-	3.5
V. Tarnovo	68.6	52.0	13.3	3.3	-	8.7
Vidin	41.3	37.8	2.5	1.0	-	2.3
Vratca	75.9	58.1	7.5	10.3	-	2.5
Gabrovo	85.5	65.8	2.0	17.7	-	10.2
Dobrich	44.3	35.6	6.5	2.2	-	9.7
Kardzhali	51.4	48.1	0.7	2.6	-	16.8
Kyustendil	86.1	55.6	30.5	-	-	3.3
Lovech	81.9	79.4	1.2	1.3	-	33.2
Montana	79.3	67.3	12.0	-	-	5.0
Pazardzhik	80.0	67.6	6.9	5.5	-	4.0
Pernik	37.1	31.9	4.2	1.1	-	2.1
Pleven	101.5	87.9	2.7	10.9	-	4.9
Plovdiv	101.1	87.8	12.3	1.0	-	3.8
Razgrad	50.4	47.4	0.6	2.4	-	3.6
Ruse	87.0	80.0	5.9	1.1	-	18.1
Silistra	45.2	42.1	1.6	1.5	-	1.4
Sliven	58.7	53.1	4.2	1.4	-	1.1
Smolyan	104.0	56.2	45.6	2.2	-	3.9
Sofia-capital	83.1	71.2	9.1	2.8	-	2.5
Sofia	71.7	58.6	10.7	2.4	-	1.9
St. Zagora	76.6	54.1	8.2	14.3	-	16.2
Targovishte	56.8	56.8	-	-	-	7.2
Haskovo	49.0	43.7	4.0	1.3	-	3.6
Shumen	51.9	50.4	1.4	0.1	-	10.4
Yambol	38.8	37.4	0.9	0.5	-	2.1

¹⁾ Beds belonging to other administrations are not included.

²⁾ According to statistical grouping used by Eurostat.

15. Medical Personnel in Health Facilities on 31.XII.2020

Regions	Physicians	Dentists	Auxiliary medical personnel	incl.:		
				Med. assist.	Midwives	Nurses
Number						
Total¹⁾	29 717²⁾	7 312²⁾	44 676	1 919	3 251	29 160
Blagoevgrad	904	308	1 525	88	76	1 097
Burgas	1 367	298	2 166	131	122	1 429
Varna	2 395	615	2 926	56	359	1 667
V. Tarnovo	734	207	1 223	104	45	839
Vidin	284	86	394	71	33	218
Vratca	598	116	1 045	76	74	721
Gabrovo	399	93	730	64	39	464
Dobrich	455	117	709	40	55	445
Kardzhali	391	130	829	84	84	520
Kyustendil	410	109	579	59	38	368
Lovech	464	94	708	65	30	474
Montana	438	80	802	77	69	532
Pazardzhik	900	223	1 371	60	81	945
Pernik	376	139	524	20	29	372
Pleven	1 481	157	2 082	70	178	1 332
Plovdiv	3 455	1 148	4 733	61	289	3 086
Razgrad	325	61	550	55	20	366
Ruse	793	173	1 433	87	140	894
Silistra	294	64	550	49	56	360
Sliven	531	127	1 006	55	62	677
Smolyan	311	123	619	66	51	377
Sofia-capital	7 266	1 839	9 891	106	848	6 258
Sofia	882	128	1 170	18	63	822
St. Zagora	1 319	291	2 079	72	148	1 411
Targovishte	314	61	647	43	54	415
Haskovo	672	189	1 135	84	96	761
Shumen	509	113	927	63	57	643
Yambol	318	79	602	66	32	370

¹⁾ Personnel belonging to other administrations are included, but not allocated by regions.

²⁾ Incl. individual and group practices personnel, working under contract with the NHIF in more than one district.

15. Medical Personnel in Health Facilities on 31.XII.2020

Regions	Physicians	Dentists	Auxiliary medical personnel	incl.:		
				Med. assist.	Midwives	Nurses
Per 10 000 population						
Total¹⁾	43.0²⁾	10.6²⁾	64.6	2.8	4.7	42.2
Blagoevgrad	30.0	10.2	50.6	2.9	2.5	36.4
Burgas	33.4	7.3	52.9	3.2	3.0	34.9
Varna	50.9	13.1	62.2	1.2	7.6	35.5
V. Tarnovo	32.0	9.0	53.2	4.5	2.0	36.5
Vidin	35.0	10.6	48.5	8.7	4.1	26.8
Vratca	37.9	7.4	66.3	4.8	4.7	45.7
Gabrovo	37.7	8.8	69.0	6.0	3.7	43.9
Dobrich	26.7	6.9	41.6	2.3	3.2	26.1
Kardzhali	24.3	8.1	51.6	5.2	5.2	32.3
Kyustendil	35.2	9.3	49.6	5.1	3.3	31.6
Lovech	37.9	7.7	57.8	5.3	2.4	38.7
Montana	34.9	6.4	64.0	6.1	5.5	42.4
Pazardzhik	35.8	8.9	54.6	2.4	3.2	37.6
Pernik	31.2	11.5	43.5	1.7	2.4	30.9
Pleven	63.4	6.7	89.2	3.0	7.6	57.1
Plovdiv	51.8	17.2	71.0	0.9	4.3	46.3
Razgrad	29.6	5.6	50.1	5.0	1.8	33.3
Ruse	37.3	8.1	67.4	4.1	6.6	42.0
Silistra	27.5	6.0	51.5	4.6	5.2	33.7
Sliven	29.1	7.0	55.1	3.0	3.4	37.1
Smolyan	30.5	12.1	60.8	6.5	5.0	37.0
Sofia-capital	55.5	14.1	75.6	0.8	6.5	47.8
Sofia	37.0	5.4	49.1	0.8	2.6	34.5
St. Zagora	42.4	9.3	66.8	2.3	4.8	45.3
Targovishte	28.5	5.5	58.8	3.9	4.9	37.7
Haskovo	30.1	8.5	50.8	3.8	4.3	34.0
Shumen	29.6	6.6	54.0	3.7	3.3	37.4
Yambol	27.3	6.8	51.7	5.7	2.7	31.8

¹⁾ Personnel belonging to other administrations are included, but not allocated by regions.

²⁾ Incl. individual and group practices personnel, working under contract with the NHIF in more than one district.

16. Age Structure of Physicians (individuals) with Basic Employment Contract as of 31.XII.2020

(percentage)

<i>Regions</i>	<i>Total</i>	<i>to 35 years</i>	<i>35-44 years</i>	<i>45-54 years</i>	<i>55-64 years</i>	<i>65+ years</i>
Total^{1, 2)}	100.0	15.5	9.8	21.8	35.1	17.8
Blagoevgrad	100.0	9.0	5.4	17.1	46.5	22.0
Burgas	100.0	15.2	8.5	23.8	35.2	17.3
Varna	100.0	22.3	12.9	20.2	28.5	16.1
V. Tarnovo	100.0	7.3	2.9	17.8	53.3	18.7
Vidin	100.0	1.1	5.3	21.1	48.2	24.3
Vratca	100.0	7.0	5.0	23.4	41.5	23.1
Gabrovo	100.0	5.0	3.0	19.8	44.1	28.1
Dobrich	100.0	8.8	6.8	20.9	42.6	20.9
Kardzhali	100.0	13.0	9.7	23.3	29.2	24.8
Kyustendil	100.0	3.2	3.2	20.5	51.2	21.9
Lovech	100.0	1.7	1.7	18.7	56.3	21.6
Montana	100.0	2.0	4.8	26.3	47.7	19.2
Pazardzhik	100.0	10.0	10.1	24.5	37.7	17.7
Pernik	100.0	5.1	3.7	23.4	49.2	18.6
Pleven	100.0	20.2	9.6	20.6	36.0	13.6
Plovdiv	100.0	21.5	12.4	22.5	28.1	15.5
Razgrad	100.0	8.3	8.0	24.0	37.9	21.8
Ruse	100.0	15.5	11.7	23.5	35.1	14.2
Silistra	100.0	8.2	5.1	24.8	32.0	29.9
Sliven	100.0	10.9	7.1	19.8	35.8	26.4
Smolyan	100.0	6.7	8.4	13.8	44.7	26.4
Sofia-capital	100.0	21.7	13.1	21.0	28.4	15.8
Sofia	100.0	16.3	5.5	21.1	33.3	23.8
St. Zagora	100.0	12.8	9.2	30.9	36.8	10.3
Targovishte	100.0	9.2	3.8	23.3	42.0	21.7
Haskovo	100.0	8.3	5.5	18.6	44.5	23.1
Shumen	100.0	7.8	6.7	18.9	45.4	21.2
Yambol	100.0	5.7	4.4	25.1	39.6	25.2

¹⁾ Personnel belonging to other administrations are included, but not allocated by regions.

²⁾ Incl. individual and group practices personnel, working under contract with the NHIF in more than one district.

17. Age Structure of healthcare professionals (individuals) with Basic Employment Contract as of 31.XII.2020

(percentage)

<i>Regions</i>	<i>Total</i>	<i>to 35 years</i>	<i>35-44 years</i>	<i>45-54 years</i>	<i>55-64 years</i>	<i>65+ years</i>
Total¹⁾	100.0	15.0	17.9	31.0	24.3	11.8
Blagoevgrad	100.0	10.1	27.3	30.9	24.5	7.2
Burgas	100.0	18.7	19.4	34.8	18.3	8.8
Varna	100.0	24.8	20.9	26.2	19.3	8.8
V. Tarnovo	100.0	6.3	14.4	33.9	28.8	16.6
Vidin	100.0	5.9	15.2	37.0	28.0	13.9
Vratca	100.0	18.3	25.9	31.8	16.9	7.1
Gabrovo	100.0	4.1	10.4	32.3	33.3	19.9
Dobrich	100.0	5.1	13.4	35.9	28.7	16.9
Kardzhali	100.0	24.2	25.7	28.5	13.4	8.2
Kyustendil	100.0	7.0	9.2	18.4	30.9	34.5
Lovech	100.0	6.7	10.1	29.6	34.8	18.8
Montana	100.0	17.0	14.8	33.8	24.5	9.9
Pazardzhik	100.0	15.6	14.1	32.1	24.5	13.7
Pernik	100.0	3.5	5.3	17.0	46.9	27.3
Pleven	100.0	28.0	15.9	23.7	22.3	10.1
Plovdiv	100.0	20.9	21.6	27.8	19.6	10.1
Razgrad	100.0	12.2	16.4	30.0	29.8	11.6
Ruse	100.0	19.1	19.4	32.5	19.1	9.9
Silistra	100.0	13.8	14.1	28.7	28.0	15.4
Sliven	100.0	10.0	14.8	29.8	30.3	15.1
Smolyan	100.0	9.1	16.1	22.8	34.3	17.7
Sofia-capital	100.0	12.9	17.6	33.1	25.7	10.7
Sofia	100.0	6.2	12.7	31.8	29.9	19.4
St. Zagora	100.0	16.4	20.7	29.0	23.0	10.9
Targovishte	100.0	19.0	19.7	30.1	19.2	12.0
Haskovo	100.0	10.7	16.8	32.6	25.4	14.5
Shumen	100.0	11.6	19.9	32.8	24.6	11.1
Yambol	100.0	5.5	9.1	28.4	31.4	25.6

¹⁾ Personnel belonging to other administrations are included, but not allocated by regions.

18. Age Structure of Nurses (individuals) with Basic Employment Contract as of 31.XII.2020

(percentage)

<i>Regions</i>	<i>Total</i>	<i>to 35 years</i>	<i>35-44 years</i>	<i>45-54 years</i>	<i>55-64 years</i>	<i>65+ years</i>
Total¹⁾	100.0	11.2	17.9	32.7	26.2	12.0
Blagoevgrad	100.0	6.7	30.5	31.5	24.5	6.8
Burgas	100.0	13.8	21.2	38.9	18.6	7.5
Varna	100.0	19.1	19.8	29.5	21.8	9.8
V. Tarnovo	100.0	4.1	14.0	34.6	30.4	16.9
Vidin	100.0	4.1	16.0	38.7	27.8	13.4
Vratca	100.0	16.7	30.6	31.3	15.5	5.9
Gabrovo	100.0	2.5	10.8	30.1	37.2	19.4
Dobrich	100.0	3.6	10.1	36.2	30.6	19.5
Kardzhali	100.0	17.0	29.0	30.8	14.8	8.4
Kyustendil	100.0	4.6	6.1	15.7	32.6	41.0
Lovech	100.0	3.9	10.1	29.3	37.0	19.7
Montana	100.0	14.7	16.3	37.1	23.5	8.4
Pazardzhik	100.0	10.8	15.4	34.5	25.9	13.4
Pernik	100.0	-	5.1	14.3	50.5	30.1
Pleven	100.0	21.7	15.3	27.0	24.1	11.9
Plovdiv	100.0	17.6	21.6	28.3	22.3	10.2
Razgrad	100.0	7.1	18.1	32.3	33.2	9.3
Ruse	100.0	17.3	17.4	35.9	18.6	10.8
Silistra	100.0	7.0	17.1	28.3	33.7	13.9
Sliven	100.0	5.1	17.2	32.4	30.6	14.7
Smolyan	100.0	5.9	16.3	21.5	37.5	18.9
Sofia-capital	100.0	8.8	16.5	34.9	29.4	10.4
Sofia	100.0	3.5	12.6	32.7	31.2	20.0
St. Zagora	100.0	12.6	18.6	31.1	24.9	12.8
Targovishte	100.0	16.8	21.2	31.4	19.0	11.6
Haskovo	100.0	9.4	16.4	33.4	25.2	15.6
Shumen	100.0	9.0	19.8	33.5	25.9	11.8
Yambol	100.0	3.5	9.8	27.0	32.3	27.4

¹⁾ Personnel belonging to other administrations are included, but not allocated by regions.

19. Persons Served¹⁾ by the Centers for Urgent Medical Care and Urgent Wards in 2020

(number)

<i>Regions</i>	<i>Total</i>	<i>Centers for urgent medical care</i>		<i>Urgent wards</i>
		<i>Total</i>	<i>incl. at calls performed</i>	
Total	2 265 975	1 139 494	675 975	1126481
Blagoevgrad	77 115	57 495	20 762	19 620
Burgas	119 876	68 204	48 710	51 672
Varna	153 196	58 851	47 998	94 345
V. Tarnovo	74 973	49 471	19 627	25 502
Vidin	30 119	13 951	8 735	16 168
Vratca	48 674	32 262	18 576	16 412
Gabrovo	37 299	20 522	10 351	16 777
Dobrich	58 030	27 911	14 626	30 119
Kardzhali	65 821	44 394	18 895	21 427
Kyustendil	46 279	27 027	16 010	19 252
Lovech	46 578	36 365	16 758	10 213
Montana	40 728	28 726	11 931	12 002
Pazardzhik	74 438	33 780	19 861	40 658
Pernik	52 585	26 967	15 325	25 618
Pleven	66 501	39 177	24 000	27 324
Plovdiv	214 707	73 403	56 234	141 304
Razgrad	35 961	20 220	10 630	15 741
Ruse	61 430	30 123	21 924	31 307
Silistra	35 888	23 956	10 907	11 932
Sliven	43 036	23 668	17 826	19 368
Smolyan	31 488	21 296	19 048	10 192
Sofia-capital	546 311	214 424	141 355	331 887
Sofia	39 250	-	-	39 250
St. Zagora	71 674	43 569	26 578	28 105
Targovishte	22 205	10 702	4 352	11 503
Haskovo	84 261	62 695	25 313	21 566
Shumen	51 267	25 603	13 346	25 664
Yambol	36 285	24 732	16 297	11 553

¹⁾ excl. ambulance transportation.

20. Childbirth care at inpatient healthcare facilities during 2020

Regions	Women in childbirth served	Newborn live births			
		number	per 100 live births	incl. premature	
				number	per 100 deaths
Total	55 015	147	0.3	112	76.2
Blagoevgrad	2 014	1	0.0	1	100.0
Burgas	3 048	10	0.3	8	80.0
Varna	4 368	13	0.3	8	61.5
V. Tarnovo	1 302	7	0.5	5	71.4
Vidin	73	-	-	-	-
Vratca	839	-	-	-	-
Gabrovo	440	1	0.2	-	-
Dobrich	942	3	0.3	2	66.7
Kardzhali	776	1	0.1	1	100.0
Kyustendil	579	-	-	-	-
Lovech	557	-	-	-	-
Montana	1 153	3	0.3	1	33.3
Pazardzhik	1 706	6	0.3	6	100.0
Pernik	432	2	0.5	1	50.0
Pleven	2 282	9	0.4	6	66.7
Plovdiv	6 692	28	0.4	22	78.6
Razgrad	276	-	-	-	-
Ruse	1 570	6	0.4	5	83.3
Silistra	910	2	0.2	2	100.0
Sliven	2 520	9	0.4	8	88.9
Smolyan	408	-	-	-	-
Sofia-capital	14 950	29	0.2	24	82.8
Sofia	1 244	-	-	-	-
St. Zagora	2 846	9	0.3	6	66.7
Targovishte	694	2	0.3	1	50.0
Haskovo	1 217	5	0.4	5	100.0
Shumen	874	1	0.1	-	-
Yambol	303	-	-	-	-

21. Surgical Patients, Discharged from Hospitals in 2020

<i>Regions</i>	<i>Discharged surgical patients</i>	<i>Surgical patients with complications (percentage)</i>	<i>Lethality (percentage)</i>
Total	526 273	0.5	0.8
Blagoevgrad	12 239	0.5	0.8
Burgas	24 570	0.2	0.6
Varna	33 812	0.9	0.9
V. Tarnovo	8 366	0.3	0.5
Vidin	1 594	-	1.6
Vratca	9 792	0.2	0.8
Gabrovo	5 793	0.2	0.9
Dobrich	3 867	0.2	1.2
Kardzhali	4 666	0.3	0.6
Kyustendil	4 551	0.5	1.1
Lovech	3 923	0.2	0.4
Montana	9 246	0.3	1.2
Pazardzhik	21 063	0.4	0.5
Pernik	2 391	-	2.0
Pleven	25 552	0.2	1.1
Plovdiv	91 826	0.5	0.5
Razgrad	3 107	0.3	0.8
Ruse	21 807	1.2	1.1
Silistra	4 995	0.2	0.7
Sliven	9 731	0.2	1.1
Smolyan	3 566	0.2	0.3
Sofia-capital	156 272	0.5	0.7
Sofia	18 400	0.6	1.6
St. Zagora	18 299	0.3	1.0
Targovishte	6 666	0.3	0.3
Haskovo	9 503	0.1	0.4
Shumen	6 260	0.5	0.6
Yambol	4 416	0.8	0.9

VIII. INTERNATIONAL REVIEW

1. Birth Rate, Death Rate and Natural Growth

(per 1000 population)

Countries	Year	Birth rate	Death rate	Natural growth	Countries	Year	Birth rate	Death rate	Natural growth
Austria	2010	9.4	9.2	0.2	Romania	2010	10.5	12.8	-2.3
	2015	9.8	9.6	0.2		2015	10.2	13.2	-3.1
	2016	10.0	9.2	0.8		2016	10.4	13.1	-2.7
	2017	10.0	9.5	0.5		2017	10.8	13.4	-2.6
	2018	9.7	9.5	0.2		2018	10.4	13.6	-3.1
	2019	9.6	9.4	0.2		2019	10.3	13.4	-3.1
	2020	9.4	10.3	-0.9		2020	9.2	15.4	-6.2
Belgium	2010	11.9	9.7	2.3	Slovenia	2010	10.9	9.1	1.8
	2015	10.8	9.8	1.0		2015	10.0	9.6	0.4
	2016	10.8	9.5	1.2		2016	9.9	9.5	0.3
	2017	10.5	9.6	0.9		2017	9.8	9.9	-0.1
	2018	10.4	9.7	0.7		2018	9.4	9.9	-0.4
	2019	10.2	9.5	0.8		2019	9.3	9.9	-0.6
	2020	9.9	11.0	-1.1		2020	8.9	11.4	-2.5
Bulgaria	2010	10.2	14.9	-4.7	Hungary	2010	9.0	13.0	-4.0
	2015	9.2	15.3	-6.2		2015	9.4	13.4	-4.0
	2016	9.1	15.1	-6.0		2016	9.7	13.0	-3.2
	2017	9.0	15.5	-6.5		2017	9.7	13.5	-3.8
	2018	8.9	15.4	-6.6		2018	9.6	13.4	-3.9
	2019	8.8	15.5	-6.7		2019	9.5	13.3	-3.8
	2020	8.5	18.0	-9.5		2020	9.6	14.5	-4.9
Germany	2010	8.3	10.5	-2.2	France	2010	12.9	8.5	4.4
	2015	9.0	11.3	-2.3		2015	12.0	8.9	3.1
	2016	9.6	11.1	-1.4		2016	11.8	8.9	2.9
	2017	9.5	11.3	-1.8		2017	11.5	9.1	2.4
	2018	9.5	11.5	-2.0		2018	11.3	9.1	2.2
	2019	9.4	11.3	-1.9		2019	11.2	9.1	2.1
	2020	9.3	11.9	-2.6		2020	10.9	9.9	1.0
Estonia	2010	11.9	11.9	0.0	European Union	2010	10.4	9.9	0.6
	2015	10.6	11.6	-1.0		2015	9.7	10.4	-0.7
	2016	10.7	11.7	-1.0		2016	9.8	10.2	-0.3
	2017	10.5	11.8	-1.3		2017	9.7	10.5	-0.7
	2018	10.9	11.9	-1.0		2018	9.5	10.5	-1.0
	2019	10.6	11.6	-1.0		2019	9.3	10.4	-1.1
	2020	9.9	11.9	-2.0		2020	9.1	11.6	-2.5

2. Infant Mortality Rate

(per 1000 live births)

<i>Countries</i>	1980	2010	2015	2016	2017	2018	2019
Austria	14.3	3.9	3.1	3.1	2.9	2.7	2.9
Belgium	12.1	3.6	3.3	3.2	3.6	3.8	3.7
Bulgaria	20.2	9.4	6.6	6.5	6.4	5.8	5.6
Croatia	20.6	4.4	4.1	4.3	4.0	4.2	4.0
Cyprus	14.4	3.2	2.7	2.6	1.3	2.4	2.6
Czech Republic	16.9	2.7	2.5	2.8	2.7	2.6	2.6
Denmark	8.4	3.4	3.7	3.1	3.8	3.7	3.0
Estonia	17.1	3.3	2.5	2.3	2.3	1.6	1.6
Finland	7.6	2.3	1.7	1.9	2.0	2.1	2.1
France	...	3.6	3.7	3.7	3.9	3.8	3.8
Germany	12.4	3.4	3.3	3.4	3.3	3.2	3.2
Greece	17.9	3.8	4.0	4.2	3.5	3.5	3.7
Hungary	23.2	5.3	4.2	3.9	3.5	3.3	3.6
Ireland	11.1	3.6	3.4	3.0	3.0	2.9	2.8
Italy	14.6	3.0	2.9	2.8	2.7	2.8	2.4
Latvia	15.3	5.6	4.1	3.7	4.1	3.2	3.4
Lithuania	14.5	5.0	4.2	4.5	3.0	3.4	3.3
Luxembourg	11.5	3.4	2.8	3.8	3.2	4.3	4.7
Malta	15.2	5.6	5.8	7.4	6.7	5.6	6.7
Netherlands	8.6	3.8	3.3	3.5	3.6	3.5	3.6
Poland	25.4	5.0	4.0	4.0	4.0	3.8	3.8
Portugal	24.3	2.5	2.9	3.2	2.7	3.3	2.8
Romania	29.3	9.8	7.5	6.8	6.5	6.0	5.8
Slovakia	20.9	5.7	5.1	5.4	4.5	5.0	5.1
Slovenia	15.3	2.5	1.6	2.0	2.1	1.7	2.1
Spain	12.3	3.2	2.7	2.7	2.7	2.7	2.6
Sweden	6.9	2.5	2.5	2.5	2.4	2.0	2.1
European Union	15.9	4.0	3.6	3.6	3.5	3.4	3.4

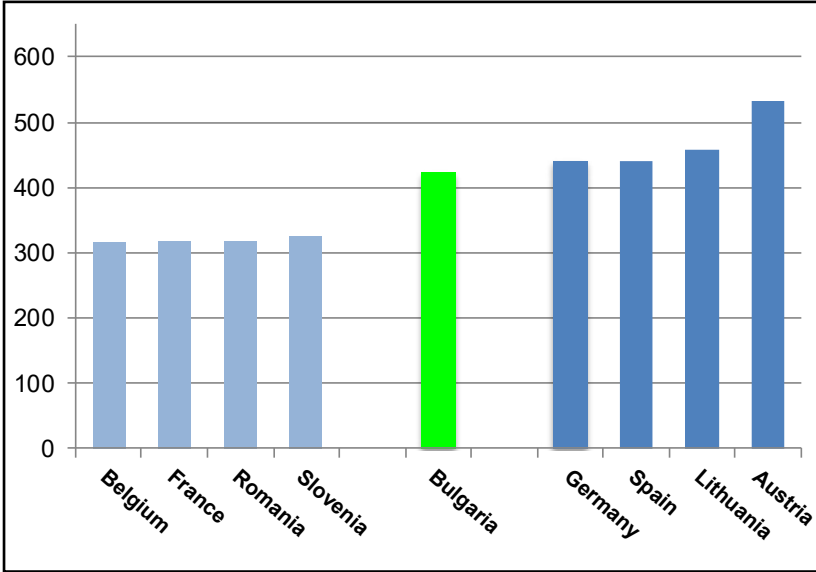
3. Medical Personnel and Hospital Beds

(per 100 000 population)

<i>Countries</i>	<i>Years</i>	<i>Physicians</i>	<i>Years</i>	<i>Beds</i>
Austria	2019	531.8	2019	718.9
Belgium	2019	316.3	2019	556.7
Bulgaria	2019	423.6	2019	774.1
Croatia	2019	351.9	2019	566.5
Cyprus	2019	427.2	2019	311.5
Czech Republic	2019	406.7	2019	658.0
Denmark	2018	419.4	2019	259.3
Estonia	2019	346.9	2019	453.0
Finland	2010	298.9	2019	334.6
France	2019	317.0	2019	583.8
Germany	2019	439.4	2019	791.5
Greece	2019	...	2019	418.0
Hungary	2019	349.4	2019	690.8
Ireland	2019	331.7	2019	288.0
Italy	2019	405.1	2019	316.3
Latvia	2019	326.7	2019	542.3
Lithuania	2019	457.0	2019	634.7
Luxembourg	2017	298.5	2019	426.5
Malta	2019	402.5	2019	410.3
Netherlands	2019	371.5	2019	307.8
Poland	2017	237.8	2019	617.5
Portugal	2019	...	2019	350.6
Romania	2019	318.7	2019	705.8
Slovakia	2019	...	2019	576.1
Slovenia	2019	326.2	2019	443.2
Spain	2019	440.4	2019	294.6
Sweden	2018	431.7	2019	207.1
European Union	-	-	2019	532.0

Physicians

(per 100 000 population)



Hospital Beds

(per 100 000 population)

