



MINISTRY OF HEALTH



NATIONAL CENTER
OF PUBLIC HEALTH AND ANALYSES

Annual Bulgaria

PUBLIC HEALTH STATISTICS

2013

POPULATION AND VITAL STATISTICS
MORBIDITY AND MORTALITY BY CAUSES
HEALTH FACILITIES
MEDICAL PERSONNEL
ACTIVITIES OF THE HEALTH FACILITIES
ECONOMICAL INDICATORS
REVIEW BY REGIONS
INTERNATIONAL REVIEW

Sofia, 2013

PUBLIC HEALTH STATISTICS, Bulgaria 2013, Annual

ISSN 1310–2931

Editors *Christian Griva, Krasimira Dikova*

Publish *National center of public health and analysis*

Sofia, 2013

Print *National center of public health and analysis*

Circulatuion 60

CONTENTS

I. POPULATION AND VITAL STATISTICS

1. Population on 31.XII.	7
2. Population by age on 31.XII.2012	8
3. Age structure of the population	9
4. Live births, deaths and natural growth	10
5. Births and abortions	12
6. Age specific fertility rates	12
7. Infant mortality	13
8. Perinatal, neonatal and postneonatal infant mortality	13
9. Stillbirths and infant deaths under 1 year	16
10. Mortality by age groups	17
11. Life expectancy in Republic of Bulgaria	17

II. MORBIDITY AND MORTALITY BY CAUSES

1. Registered cases of certain infectious diseases subject to obligatory reporting	18
2. Registered cases of active tuberculosis	19
3. Registered cases of malignant neoplasms	20
4. Registered cases of malignant neoplasms by localization	22
5. Registered cases of some venereal and skin infections	23
6. Patients under observation of psychiatric facilities, wards and consultations 31.12. by type of disease	24
7. Hospitalized patients (discharged and deceased) in hospitals by age	25
8. Hospitalized patients (discharged and deceased) in hospitals by classes of ICD-10 in 2012	26
9. Hospitalized patients (discharged and deceased) in hospitals 0-17 years of age by classes of ICD-10 in 2012	27
10. Hospitalized patients (discharged and deceased) in hospitals 18-64 years of age by classes of ICD-10 in 2012	28
11. Hospitalized patients (discharged and deceased) in hospitals over 65 years of age by classes of ICD-10 in 2012	29
12. Primary disability of persons over 16 years of age	30
13. Primary disability of persons under 16 years of age	31

14. Primary disability of persons over 16 years of age by class of disease and loss of capacity to work in 2012	32
15. Primary disability of persons under 16 years of age by class of disease and loss of capacity in 2012	33
16. Mortality by causes in 2012	34
III. HEALTH FACILITIES	
1. Health facilities and hospital beds on 31.XII.2012	36
2. Beds in hospitals on 31.XII.2012 by type	38
3. Beds in hospitals and other healthcare establishments on 31.XII.2012 by type	40
IV. MEDICAL PERSONNEL	
1. Medical personnel.....	41
2. Physicians by speciality	43
V. ACTIVITIES OF THE HEALTH FACILITIES	
1. Activities of the inpatient wards of the hospital health care facilities in 2012	44
2. Utilization, turnover and average length of stay in health care facilities in 2012 by type of beds	46
3. Women in childbirth served at inpatient healthcare facilities	48
4. Made abortions in health facilities during 2012 by age group and type of abortion	49
5. Medical abortions in health facilities	50
6. Persons served by the centers for urgent medical care and urgent wards	50
7. Number and type of surgeries of patients, discharged from hospitals in 2012	51
8. Number and type of surgeries of patients, discharged from hospitals in 2012 by type of healthcare facility	52
VI. ECONOMICAL INDICATORS OF THE HEALTH FACILITIES FOR 2012	54

VII. REVIEW BY REGIONS

1. Population on 31.XII.2012	55
2. Live births in 2012	57
3. Deaths in 2012	58
4. Natural growth of population in 2012	59
5. Infant mortality in 2012	60
6. Registered cases of certain infectious diseases subject to obligatory reporting in 2012	61
7. Registered cases of active tuberculosis in 2012	63
8. Registered cases of malignant neoplasms in 2012	64
9. Registered cases of some venereal and skin infections in 2012	65
10. Patients under observation of psychiatric facilities, wards and consultations by type of disease on 31.12.2012	66
11. Hospitalized patients (discharged and deceased) in Hospitals in 2012	68
12. Primary disability of persons in 2012	69
13. Beds in hospitals on 31.XII.2012	70
14. Beds in hospitals and other healthcare establishments on 31.XII.2012 by type	71
15. Medical personnel in health facilities on 31.XII.2012	73
16. Persons served by the centers for urgent medical care and urgent wards in 2012	75
17. Childbirth care at inpatient healthcare facilities during 2012	76
18. Surgical patients, discharged from hospitals in 2012	77

VIII. INTERNATIONAL REVIEW

1. Birth rate, death rate and natural growth	78
2. Infant mortality rate	79
3. Medical personnel and hospital beds	80

Main Health-demographic Indicators for 2012

Population on 31.12.2012	7 282 041
Age structure of the population:	
0-17 years of age	16.2%
18-64 years of age	64.7%
over 65 years of age	19.1%
Crude birth rate	9.5‰
Crude death rate	15.0‰
Infant mortality	7.8‰
Perinatal mortality	11.0‰
Neonatal mortality	4.5‰
Post neonatal mortality	3.3‰
Life expectancy at birth (<i>years</i>)	74.02
male	70.62
female	77.55
New cases of active tuberculosis	26.6‰‰‰
New cases of malignant neoplasms	432.4‰‰‰
Hospitalized patient	27936.6‰‰‰
0-17 years of age	25373.1‰‰‰
18-64 years of age	22704.8‰‰‰
over 65 years of age	47969.2‰‰‰
Primary disability of persons over 16 years of age	9.9‰
Primary disability of persons under 16 years of age	4.4‰
Hospitals (<i>number</i>)	312
Beds in hospitals (<i>number</i>)	45 726
Physicians (<i>number</i>)	28 643
Auxiliary medical personnel (<i>number</i>)	47 806
Persons served in need of urgent medical care	2 466 151
Surgeries of patients discharged from hospitals	545 600

I. POPULATION AND VITAL STATISTICS

1. Population on 31.XII.¹⁾

<i>Year</i>	<i>Total</i>	<i>Male</i>	<i>Female</i>	<i>Urban</i>	<i>Rural</i>
Number (thous.)					
1946	7029.3	3516.7	3512.6	1735.2	5294.1
1956	7613.7	3799.4	3814.3	2556.1	5057.6
1960	7905.5	3946.9	3958.6	3005.0	4900.5
1970	8514.9	4256.6	4258.3	4509.8	4005.1
1980	8876.6	4421.7	4454.9	5546.0	3330.6
1990	8669.3	4270.0	4399.3	5817.9	2851.4
2000	8149.5	3967.4	4182.1	5576.9	2572.6
2005	7718.8	3743.4	3975.4	5416.6	2302.2
2009	7563.7	3659.3	3904.4	5401.2	2162.5
2010	7504.9	3629.8	3875.1	5375.1	2129.8
2011	7327.2	3566.8	3760.4	5324.9	2002.3
2012	7282.0	3543.6	3738.4	5306.2	1975.8
Percentage (%)					
1946	100.0	50.0	50.0	24.7	75.3
1956	100.0	49.9	50.1	33.6	66.4
1960	100.0	49.9	50.1	38.0	62.0
1970	100.0	50.0	50.0	53.0	47.0
1980	100.0	49.8	50.2	62.5	37.5
1990	100.0	49.3	50.7	67.1	32.9
2000	100.0	48.7	51.3	68.4	31.6
2005	100.0	48.5	51.5	70.2	29.8
2009	100.0	48.4	51.6	71.4	28.6
2010	100.0	48.4	51.6	71.6	28.4
2011	100.0	48.7	51.3	72.7	27.3
2012	100.0	48.7	51.3	72.9	27.1

¹⁾ NSI data

2. Population by Age on 31.XII.2012¹⁾

<i>Age</i>	<i>Total</i>	<i>Male</i>	<i>Female</i>	<i>Urban</i>	<i>Rural</i>
Total	7282041	3543606	3738435	5306233	1975808
0	65916	33992	31924	49384	16532
1–4	280462	144001	136461	209045	71417
5–9	327371	168440	158931	238251	89120
10–14	316037	162442	153595	227897	88140
15–19	335725	172887	162838	242739	92986
20–24	457507	235454	222053	352628	104879
25–29	488905	253130	235775	380601	108304
30–34	507320	263748	243572	396107	111213
35–39	556985	286856	270129	437389	119596
40–44	528703	272371	256332	403897	124806
45–49	475946	241946	234000	356404	119542
50–54	503260	250781	252479	373684	129576
55–59	518394	250078	268316	380890	137504
60–64	524432	241510	282922	373242	151190
65–69	445498	195711	249787	297520	147978
70–74	341982	141901	200081	212485	129497
75–79	295106	115735	179371	179578	115528
80–84	196109	73179	122930	121677	74432
85–89	90820	31278	59542	56899	33921
90–94	23132	7431	15701	14378	8754
95–99	2105	623	1482	1330	775
100+	326	112	214	208	118

¹⁾ NSI data

3. Age Structure of the Population

(percentage)

Year	Total	Age groups		
		0–17	18–64	65+
Total				
1970	100.0	27.5	62.8	9.7
1995	100.0	22.0	62.8	15.2
2000	100.0	19.5	64.1	16.4
2005	100.0	17.5	65.3	17.2
2010	100.0	16.7	65.6	17.7
2011	100.0	16.1	65.0	18.9
2012	100.0	16.2	64.7	19.1
Urban				
1970	100.0	28.1	65.3	6.6
1995	100.0	22.9	65.6	11.5
2000	100.0	20.0	67.7	12.3
2005	100.0	17.7	68.7	13.6
2010	100.0	16.9	68.5	14.6
2011	100.0	16.1	67.6	16.3
2012	100.0	16.2	67.1	16.7
Rural				
1970	100.0	26.8	60.0	13.2
1995	100.0	20.1	57.0	22.9
2000	100.0	18.6	56.3	25.1
2005	100.0	17.0	57.4	25.6
2010	100.0	16.1	58.2	25.7
2011	100.0	16.1	58.2	25.7
2012	100.0	16.1	58.0	25.9

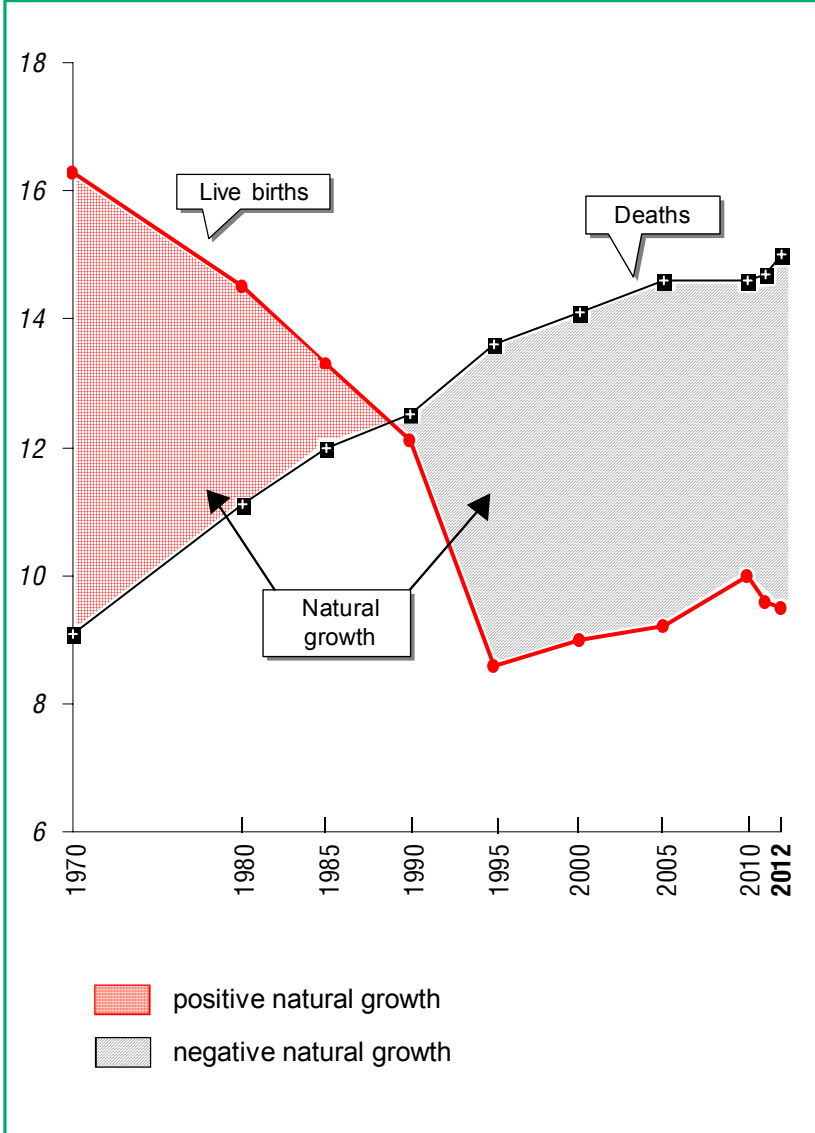
4. Live Births, Deaths and Natural Growth¹⁾

Year	Live births	Deaths	Natural growth	Live births	Deaths	Natural growth
	Number			Per 1000 population		
Total						
1970	138745	77095	61650	16.3	9.1	7.2
1980	128190	97950	30240	14.5	11.1	3.4
1990	105180	108608	-3428	12.1	12.5	-0.4
1995	71967	114670	-42703	8.6	13.6	-5.0
2000	73679	115087	-41408	9.0	14.1	-5.1
2005	71075	113374	-42299	9.2	14.6	-5.4
2010	75513	110165	-34652	10.0	14.6	-4.6
2011	70846	108258	-37412	9.6	14.7	-5.1
2012	69121	109281	-40160	9.5	15.0	-5.5
Urban						
1970	79809	30957	48852	18.0	7.0	11.0
1980	86664	45153	41511	15.7	8.2	7.5
1990	73940	55225	18715	12.6	9.4	3.2
1995	50405	60767	-10362	8.8	10.7	-1.9
2000	52789	64184	-11395	9.5	11.5	-2.0
2005	52280	65309	-13029	9.6	12.0	-2.4
2010	57077	65759	-8682	10.6	12.2	-1.6
2011	53396	65182	-11786	10.0	12.2	-2.2
2012	51658	66333	-14675	9.7	12.5	-2.8
Rural						
1970	58936	46138	12798	14.6	11.4	3.2
1980	41526	52797	-11271	12.4	15.7	-3.3
1990	31240	53383	-22143	10.9	18.6	-7.7
1995	21562	53903	-32341	8.0	19.9	-11.9
2000	20890	50903	-30013	8.1	19.6	-11.5
2005	18795	48065	-29270	8.1	20.8	-12.7
2010	18436	44406	-25970	8.6	20.7	-12.1
2011	17450	43076	-25626	8.7	21.4	-12.7
2012	17463	42948	-25485	8.8	21.6	-12.8

¹⁾ NSI data

Live Births, Deaths and Natural Growth

(per 1000 population)



5. Births and Abortions

Year	<i>Births</i>	<i>Abortions</i>	<i>Births</i>	<i>Abortions</i>
	Number		Per 1000 women at 15–49	
1980	129176	156056	60.4	72.9
1990	105821	144644	49.2	67.2
1995	72425	97092	35.2	47.2
2000	74234	61378	37.0	30.6
2005	71640	41795	38.2	22.3
2009	81572	33733	45.2	18.7
2010	76105	31548	42.9	17.8
2011	71402	31716	43.0	19.1
2012	69678	29992	42.5	18.3

6. Age Specific Fertility Rates

(per 1000 women at 15–49)

Age	1980	1990	1995	2000	2005	2010	2011	2012
Total	59.8	48.9	35.0	36.7	37.9	42.6	42.6	42.2
15–19	80.3	68.3	53.5	47.1	40.1	43.1	43.5	44.0
20–24	192.8	158.4	100.6	89.7	78.6	73.1	70.4	70.1
25–29	92.8	78.3	61.8	72.9	80.9	86.8	90.1	88.8
30–34	32.2	28.8	22.4	32.3	47.3	65.1	66.8	65.8
35–39	9.7	9.4	7.5	9.5	14.5	26.1	26.9	27.6
40–44	2.1	1.8	1.5	1.9	2.1	4.1	4.5	4.4
45–49	0.1	0.1	0.1	0.1	0.1	0.3	0.3	0.4

7. Infant Mortality¹⁾

<i>Year</i>	<i>Total</i>	<i>Urban</i>	<i>Rural</i>
Number			
1970	3788	1811	1977
1980	2594	1560	1034
1990	1554	1020	534
1995	1065	705	360
2000	981	657	324
2005	739	464	275
2009	729	468	261
2010	708	461	247
2011	601	412	189
2012	536	368	168
Per 1000 live births			
1970	27.3	22.7	33.5
1980	20.2	18.0	24.9
1990	14.8	13.8	17.1
1995	14.8	14.0	16.7
2000	13.3	12.4	15.5
2005	10.4	8.9	14.6
2009	9.0	7.7	12.9
2010	9.4	8.1	13.4
2011	8.5	7.7	10.8
2012	7.8	7.1	9.6

8. Perinatal, Neonatal and Postneonatal Infant Mortality

(per 1000 live births)

	<i>1980</i>	<i>1990</i>	<i>1995</i>	<i>2000</i>	<i>2005</i>	<i>2010</i>	<i>2011</i>	<i>2012</i>
Perinatal ²⁾	15.0	11.1	11.8	12.2	12.0	11.4	11.7	11.0
Neonatal	10.4	7.7	7.8	7.5	6.2	5.2	5.3	4.5
Postneonatal ³⁾	10.0	7.1	7.1	5.9	4.2	4.2	3.2	3.3

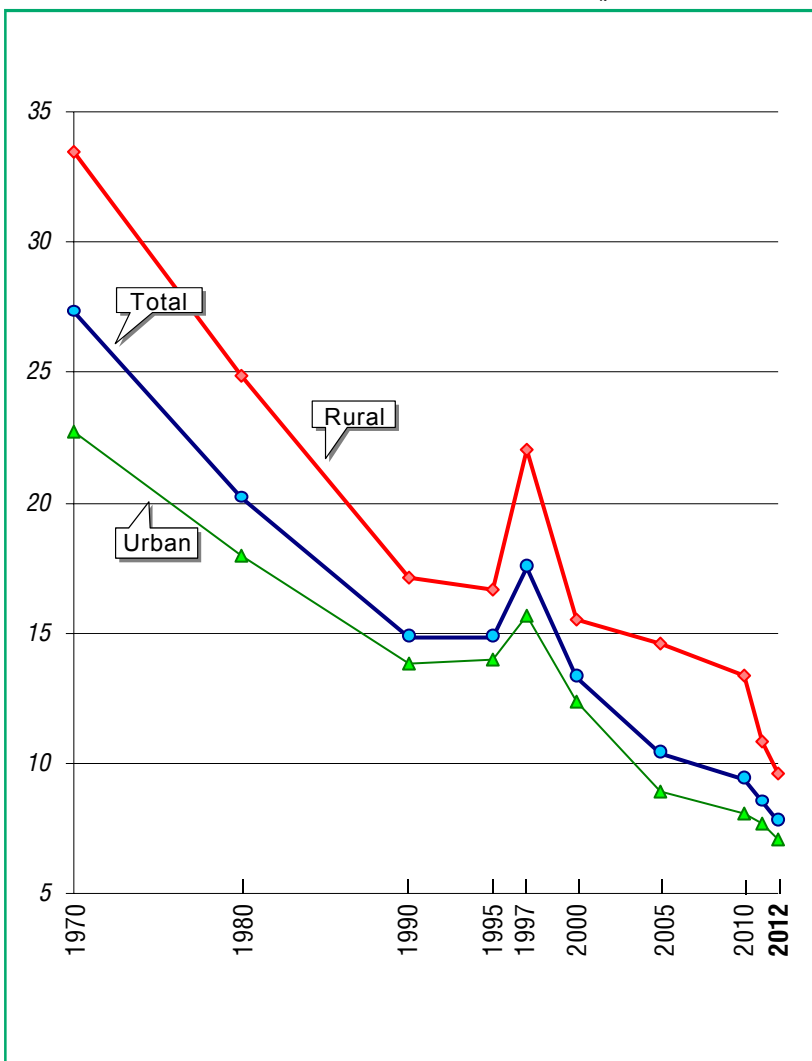
¹⁾ NSI data

²⁾ Per 1000 births.

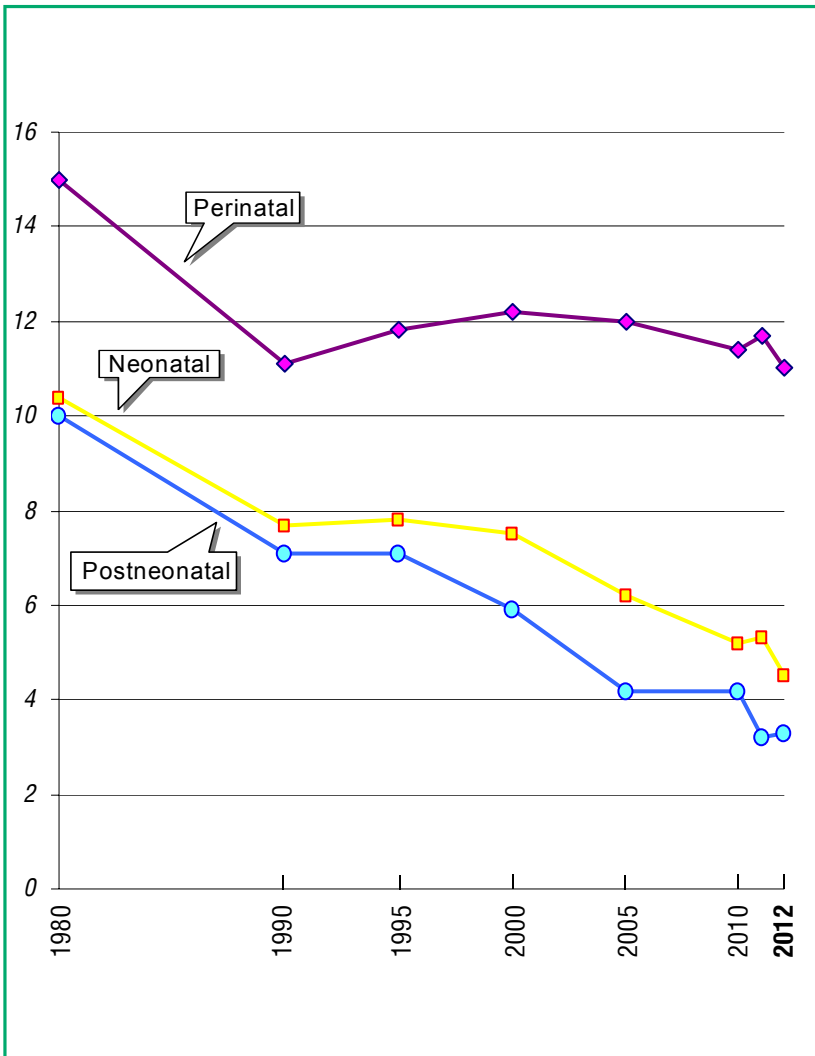
³⁾ Per 1000 live births, excl. deaths before 28th day.

Infant Mortality

(per 1000 live births)



Perinatal, Neonatal and Postneonatal Infant Mortality



9. Stillbirths and Infant Deaths Under 1 Year¹⁾

(number)

Year	Stillbirths	Infant deaths under 1 year			
		Total	Incl:		
			0-6 days	7-27 days	28+ days
Total					
1970	1382	3788	1259	569	1960
1980	986	2594	957	372	1265
1990	641	1554	533	278	743
1995	458	1065	397	162	506
2000	555	981	348	201	432
2005	565	739	296	148	295
2010	592	708	274	120	314
2011	556	601	279	100	222
2012	557	536	206	104	226
Urban					
1970	792	1811	773	264	774
1980	606	1560	640	245	675
1990	449	1020	357	208	455
1995	299	705	282	107	316
2000	365	657	237	141	279
2005	363	464	195	91	178
2010	409	461	183	80	198
2011	401	412	193	70	149
2012	393	368	140	73	155
Rural					
1970	590	1977	486	305	1186
1980	380	1034	317	127	590
1990	192	534	176	70	288
1995	159	360	115	55	190
2000	190	324	111	60	153
2005	202	275	101	57	117
2010	183	247	91	40	116
2011	155	189	86	30	73
2012	164	168	66	31	71

¹⁾ NSI data

10. Mortality by Age Groups

(per 1000 population of the same age group)

Year	Total	Age groups								
		under 1 year ¹⁾	1-9	10-19	20-29	30-39	40-49	50-59	60-69	70+
1970	9.1	27.3	0.8	0.6	1.0	1.5	3.2	8.1	22.4	84.2
1980	11.1	20.2	0.7	0.6	1.0	1.6	3.6	9.1	24.3	88.1
1990	12.5	14.8	0.6	0.6	1.1	1.8	4.3	10.0	23.5	93.4
2000	14.1	13.3	0.5	0.4	0.8	1.7	4.3	10.1	23.8	84.5
2005	14.6	10.4	0.4	0.4	0.8	1.5	4.2	10.4	22.4	80.2
2010	14.6	9.4	0.3	0.4	0.7	1.3	3.7	9.4	20.1	80.2
2011	14.7	8.5	0.3	0.4	0.7	1.3	3.6	9.3	19.3	77.4
2012	15.0	7.8	0.3	0.4	0.6	1.2	3.3	9.2	19.5	78.7

¹⁾ Per 1000 live births

11. Life Expectancy in Republic of Bulgaria¹⁾

(in years)

Periods	Total	Male	Female
1935-1939	51.75	50.98	52.56
1960-1963	69.59	67.82	71.35
1974-1976	71.31	68.68	73.91
1978-1980	71.14	68.35	73.55
1984-1986	71.19	68.17	74.44
1989-1991	71.22	68.02	74.66
1993-1995	70.60	67.10	74.90
1997-1999	71.00	67.60	74.60
1998-2000	71.70	68.15	75.34
1999-2001	71.80	68.50	75.20
2000-2002	71.87	68.54	75.37
2003-2005	72.60	69.00	76.30
2005-2007	72.70	69.20	76.30
2006-2008	73.00	69.50	76.60
2007-2009	73.43	69.90	77.08
2008-2010	73.60	70.00	77.20
2009-2011	73.83	70.37	77.37
2010-2012	74.02	70.62	77.55

¹⁾ NSI data

II. MORBIDITY AND MORTALITY BY CAUSES

1. Registered Cases of Certain Infectious Diseases Subject to Obligatory Reporting

(per 100000 population)

Cases	1980	1990	2000	2010	2011	2012
Diphtheria	0.0	–	–	–	–	–
Scarlet fever	145.6	85.7	64.6	34.3	35.5	42.6
Measles	121.5	1.7	0.6	292.1	2.1	0.0
Pertussis	1.7	0.3	1.3	0.7	0.6	1.4
Rubeolla	779.1	147.3	348.2	0.5	0.6	0.2
Varicella	537.2	418.6	285.8	261.8	368.9	380.3
Mumps	73.6	1.5	28.8	4.2	1.9	0.8
Meningococcal meningitis and sepsis	1.2	0.9	1.1	0.2	0.2	0.2
Poliomyelitis	–	–	–	–	–	–
Q fever	0.0	0.4	1.8	0.2	0.2	0.4
Crimean-Congo haemorrhagic fever	0.1	0.1	0.1	0.1	0.1	0.1
Lyme disease	–	–	3.6	7.9	8.1	5.6
Malaria ¹⁾	1.4	0.5	0.2	0.1	0.1	0.2
Typhoid fever	0.0	0.0	–	0.0	–	0.0
Shigellosis	96.9	61.9	19.8	7.9	10.9	10.6
Viral hepatitis	110.8	274.2	104.8	39.9	85.2	76.5
Anthrax	0.1	0.1	0.2	0.0	0.0	0.0
Leptospirosis	0.2	0.3	0.4	0.1	0.2	0.1
Tetanus	0.2	0.1	0.0	0.0	0.1	0.0
Bacterial meningitis and meningoencephalitis	•	•	•	1.9	2.1	2.0
Viral meningitis and meningoencephalitis	•	•	•	3.2	3.0	7.6

¹⁾ All registered cases are imported.

2. Registered Cases of Active Tuberculosis

(per 100000 population)

<i>Forms of disease</i>	1980	1990	1995	2000	2005	2010	2011	2012
Total	178.2	106.0	154.9	173.4	127.7	90.5	74.3	75.8
Incl. new cases	37.0	25.9	40.5	41.0	40.1	30.3	27.9	26.6
Tuberculosis of the respiratory system	115.1	80.5	123.4	144.8	106.5	79.2	65.5	67.8
Incl. new cases	25.6	19.9	33.9	35.6	35.4	26.6	24.9	23.9
Tuberculosis of the bones and joints	12.4	5.3	5.1	4.8	3.6	1.8	1.2	1.1
Incl. new cases	2.2	1.0	1.0	1.0	0.7	0.5	0.4	0.4
Tuberculosis of the nervous system ¹⁾	0.5	0.3	0.5	0.5	0.2	0.2	0.4	0.3
Incl. new cases	0.1	0.1	0.1	0.1	0.1	0.1	0.2	0.1
Other forms of tuberculosis	50.2	19.9	25.9	23.3	17.4	9.3	7.2	6.6
Incl. new cases	9.1	4.9	5.5	4.3	3.9	3.1	2.4	2.2

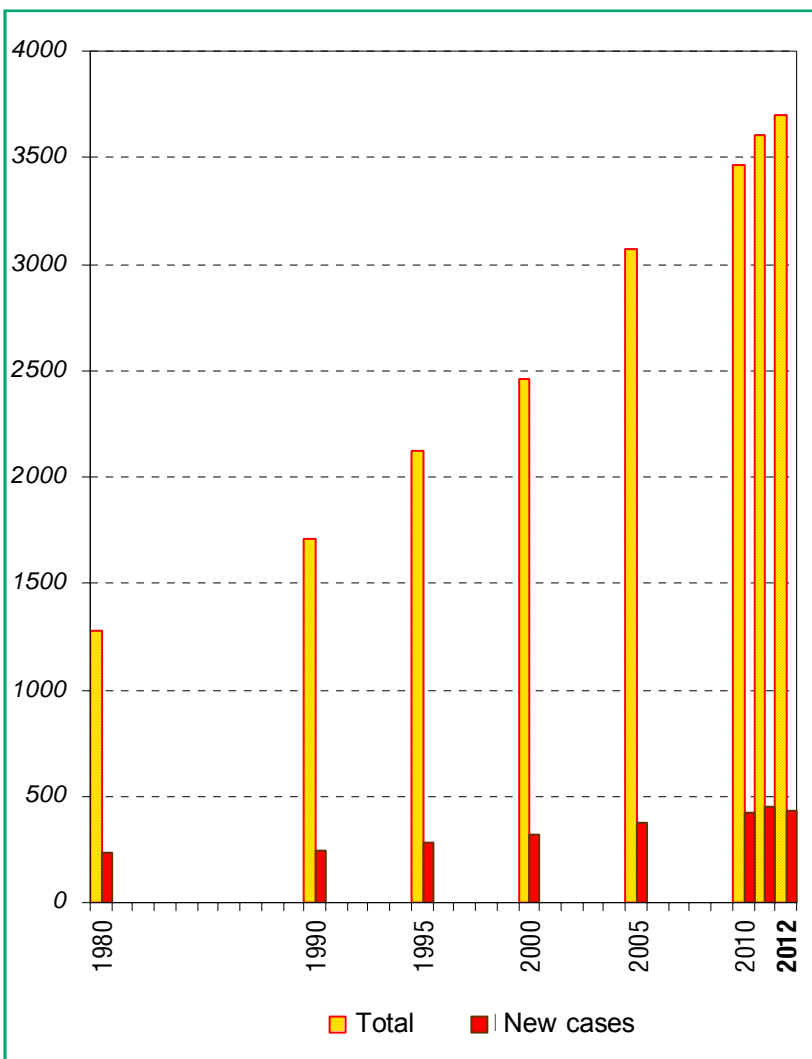
¹⁾ Till 2004 – Meningitis and CNS tuberculosis (ICD-9)

3. Registered Cases of Malignant Neoplasms

<i>Year</i>	<i>Total</i>	<i>incl. new cases</i>	<i>Total</i>	<i>incl. new cases</i>
	Number		Per 100 000 population	
1980	113336	20620	1279.0	232.7
1990	153651	22038	1762.4	252.8
1995	178179	23966	2119.6	285.1
2000	201226	26156	2462.9	320.1
2005	237607	29354	3069.9	379.3
2007	255120	31706	3330.7	413.9
2008	262059	32478	3437.6	426.0
2009	261974	33246	3453.8	438.3
2010	261382	32067	3469.2	425.6
2011	264739	32969	3602.7	448.7
2012	270492	31588	3703.0	432.4

Registered Cases of Malignant Neoplasms

(per 100 000 population)



4. Registered Cases of Malignant Neoplasms by Localization

(per 100 000 population)

<i>Localization ICD-10</i>	2011		2012	
	<i>Total</i>	<i>Incl. new cases</i>	<i>Total</i>	<i>Incl. new cases</i>
Total	3602.7	448.7	3703.0	432.4
Lips, oral cavity and pharynx	105.0	11.3	104.4	10.4
Incl. lips	56.9	2.6	55.9	2.2
Digestive organs	542.4	104.0	548.3	96.4
Incl. stomach	74.6	19.1	71.1	17.0
colon	229.2	32.4	237.3	32.4
rectosigmoid junction, rectum, anus and anal canal	168.1	23.9	173.3	22.8
Respiratory and intrathoracic organs	213.7	56.8	210.3	52.4
Incl. trachea, bronchus and lung	138.8	48.3	135.0	44.8
Bone and articular cartilage	10.7	0.8	10.7	0.8
Melanoma and other malignant neoplasms of skin	775.0	62.2	801.0	64.7
Mesothelial and soft tissue	37.7	4.6	39.2	4.3
Malignant neoplasm of breast	646.4	51.1	667.8	49.4
Incl. female breast	1246.4 ¹⁾	98.2 ¹⁾	1286.9 ¹⁾	95.2 ¹⁾
Female genital organs	1063.3 ¹⁾	82.1 ¹⁾	1092.3 ¹⁾	80.1 ¹⁾
Incl. cervix uteri	371.5 ¹⁾	27.3 ¹⁾	384.6 ¹⁾	26.2 ¹⁾
corpus uteru	459.5 ¹⁾	31.3 ¹⁾	469.1 ¹⁾	29.8 ¹⁾
ovary	183.5 ¹⁾	19.5 ¹⁾	187.9 ¹⁾	19.6 ¹⁾
Male genital organs	419.1 ²⁾	76.6 ²⁾	460.3 ²⁾	82.1 ²⁾
Incl. prostate	311.2 ²⁾	70.6 ²⁾	346.5 ²⁾	74.5 ²⁾
Urinary tract	230.0	30.2	238.2	28.7
Incl. bladder	159.7	20.9	165.3	19.7
Eye, brain and other parts of central nervous system	44.4	8.8	43.4	7.0
Thyroid and other endocrine glands	63.1	3.8	66.2	3.3
Ill-defined, secondary and unspecified sites	42.7	17.7	41.9	17.2
Lymphoid, haematopoietic and related tissue	141.9	17.9	147.0	16.8
Independent (primary) multiple sites	-	-	-	-

¹⁾ Per 100 000 female

²⁾ Per 100 000 male

5. Registered Cases of Some Venereal and Skin Infections

(per 100 000 population)

<i>Disease</i>	1990	1995	2000	2005	2010	2011	2012
Syphilis	31.2	54.2	119.7	66.5	43.9	36.6	26.5
incl. new cases	4.4	20.2	19.4	7.7	5.7	4.8	4.2
Gonorrhoea	68.4	27.8	9.6	2.8	2.8	2.8	1.4
incl. new cases	62.3	23.7	7.3	2.3	2.4	2.7	1.4
Microsporia	35.3	36.2	32.2	23.3	31.4	39.7	37.5
incl. new cases	32.3	32.1	23.3	17.1	25.5	30.1	29.7
Trychophytia	13.3	31.3	26.7	25.3	39.7	33.6	38.5
incl. new cases	9.9	28.8	15.9	18.5	34.8	28.0	30.9

6. Patients Under Observation of Psychiatric Facilities, Wards and Consultations on 31.12. by Type of Disease

<i>Name of disease – ICD-10</i>	2011		2012	
	<i>Number</i>	<i>per 100 000 population</i>	<i>Number</i>	<i>per 100 000 population</i>
Total	151002	2060.8	144310	1981.7
Mental and behavioural disorders	141618	1932.8	135390	1859.2
Dementia	2980	40.7	2549	35.0
Delirium, not induced by alcohol and other psychoactive substances	632	8.6	542	7.4
Other mental disorders due to brain disease	4253	58.0	4019	55.2
Mental and behavioural disorders due to use of alcohol	13199	180.1	12119	166.4
Mental and behavioural disorders due to use of other psychoactive substance	927	12.7	996	13.7
Mental and behavioural disorders due to use of opioids	750	10.2	837	11.5
Schizophrenia, schizotypal and delusional disorders	36347	496.1	35358	485.6
Schizophrenia	28365	387.1	27994	384.4
Acute and transient psychotic disorders	2766	37.7	2651	36.4
Mood [affective] disorders	26813	365.9	25609	351.7
Manic episode	3167	43.2	3054	41.9
Bipolar affective disorder	7266	99.2	6702	92.0
Depressive episode	6616	90.3	6412	88.1
Recurrent depressive disorder	8847	120.7	8537	117.2
Neurotic, stress-related and somatoform disorders	14543	198.5	13970	191.8
Disorders of eating, sleep and sexual	158	2.2	122	1.7
Disorders of adult personality and behaviour	5660	77.2	5516	75.7
Mental retardation	32825	448.0	31375	430.9
Specific disorders of psychological development	854	11.7	768	10.5
Pervasive developmental disorders	436	6.0	447	6.1
Hyperkinetic disorders	534	7.3	518	7.1
Other disorders of behaviour and emotions	415	5.7	417	5.7
Nonorganic enuresis	595	8.1	588	8.1
All other classes of diseases	9384	128.0	8920	122.5
Epilepsy	9373	127.9	8917	122.5

7. Hospitalized Patients (discharged and deceased) in Hospitals by Age^{1), 2), 3)}

Year	Age group				
	Total	0-17	18+	Incl.:	
				18-64	65+
Number					
1985	1588695	287198	1301497	•	•
1990	1534738	269742	1264996	•	•
1995	1283472	220525	1062947	•	•
2000	1181097	193861	987236	•	•
2005	1614313	308107	1306206	880895	425311
2010	1917199	328306	1588893	1010719	578174
2011	1961177	297170	1664007	1043329	620678
2012	2040666	299304	1741362	1075512	665850
Per 100 population ⁴⁾					
1985	17.7	14.8	18.5	•	•
1990	17.6	15.2	18.2	•	•
1995	15.3	14.7	15.4	•	•
2000	14.5	12.0	15.1	•	•
2005	20857.0	22576.3	20489.0	17459.0	31986.7
2010	25446.3	26179.2	25300.0	20412.0	43516.5
2011	26688.3	25079.2	26997.7	21768.9	45279.6
2012	27936.6	25373.1	28430.3	22704.8	47969.2

¹⁾ Till 1999 – from general type hospitals only.

²⁾ Till 1996 age groups are: 0–14 and 15+ years.

³⁾ From 2005 incl. healthy live births.

⁴⁾ The indicators from 2003 are calculated per 100 000 population.

8. Hospitalized Patients (discharged and deceased) in Hospitals by Classes of ICD-10 in 2012

ICD-10	Classes	Number	Per 100000 population	Structure (%)
	Total	2040666	27936.6	100.0
	I. Certain infectious and parasitic diseases	51809	709.3	2.5
	II. Neoplasms	135885	1860.3	6.7
	III. Diseases of the blood and blood-forming organs and certain disorders involving the immune mechanism	15732	215.4	0.8
	IV. Endocrine, nutritional and metabolic diseases	70622	966.8	3.5
	V. Mental and behavioural disorders	49847	682.4	2.4
	VI. Diseases of the nervous system	72245	989.0	3.5
	VII. Diseases of the eye and adnexa	63919	875.0	3.1
	VIII. Diseases of the ear and mastoid process	30853	422.4	1.5
	IX. Diseases of the circulatory system	293437	4017.1	14.4
	X. Diseases of the respiratory system	216612	2965.4	10.6
	XI. Diseases of the digestive system	180551	2471.7	8.9
	XII. Diseases of the skin and subcutaneous tissue	39710	543.6	1.9
	XIII. Diseases of the musculoskeletal system and connective tissue	99803	1366.3	4.9
	XIV. Diseases of the genitourinary system	151670	2076.4	7.4
	XV. Pregnancy, childbirth and the puerperium	135476	1854.7	6.6
	XVI. Certain conditions originating in the perinatal period	21671	296.7	1.1
	XVII. Congenital malformations, deformations and chromosomal abnormalities	6064	83.0	0.3
	XVIII. Symptoms, signs and abnormal clinical and laboratory findings, not elsewhere classified	9754	133.5	0.5
	XIX. Injury, poisoning and certain other consequences of external causes	110339	1510.5	5.4
	XXI. Factors influencing health status and contact with health services ¹⁾	284667	3897.1	14.0

¹⁾ Incl. 45855 healthy live births.

**9. Hospitalized Patients (discharged and deceased)
in Hospitals 0-17 Years of Age
by Classes of ICD-10 in 2012**

ICD-10	<i>Classes</i>	<i>Number</i>	<i>Per 100000 population</i>	<i>Structure (%)</i>
	Total	299304	25373.1	100.0
	I. Certain infectious and parasitic diseases	24570	2082.9	8.2
	II. Neoplasms	3393	287.6	1.1
	III. Diseases of the blood and blood-forming organs and certain disorders involving the immune mechanism	2695	228.5	0.9
	IV. Endocrine, nutritional and metabolic diseases	4165	353.1	1.4
	V. Mental and behavioural disorders	2472	209.6	0.8
	VI. Diseases of the nervous system	4718	400.0	1.6
	VII. Diseases of the eye and adnexa	3341	283.2	1.1
	VIII. Diseases of the ear and mastoid process	3378	286.4	1.1
	IX. Diseases of the circulatory system	3025	256.4	1.0
	X. Diseases of the respiratory system	101902	8638.6	34.1
	XI. Diseases of the digestive system	18608	1577.5	6.2
	XII. Diseases of the skin and subcutaneous tissue	3780	320.4	1.3
	XIII. Diseases of the musculoskeletal system and connective tissue	3307	280.3	1.1
	XIV. Diseases of the genitourinary system	11974	1015.1	4.0
	XV. Pregnancy, childbirth and the puerperium	7505	636.2	2.5
	XVI. Certain conditions originating in the perinatal period	21671	1837.1	7.3
	XVII. Congenital malformations, deformations and chromosomal abnormalities	4887	414.3	1.6
	XVIII. Symptoms, signs and abnormal clinical and laboratory findings, not elsewhere classified	1494	126.6	0.5
	XIX. Injury, poisoning and certain other consequences of external causes	18969	1608.1	6.3
	XXI. Factors influencing health status and contact with health services ¹⁾	53450	4531.2	17.9

¹⁾ Incl. 45855 healthy live births.

**10. Hospitalized Patients (discharged and deceased)
in Hospitals 18-64 Years of Age
by Classes of ICD-10 in 2012**

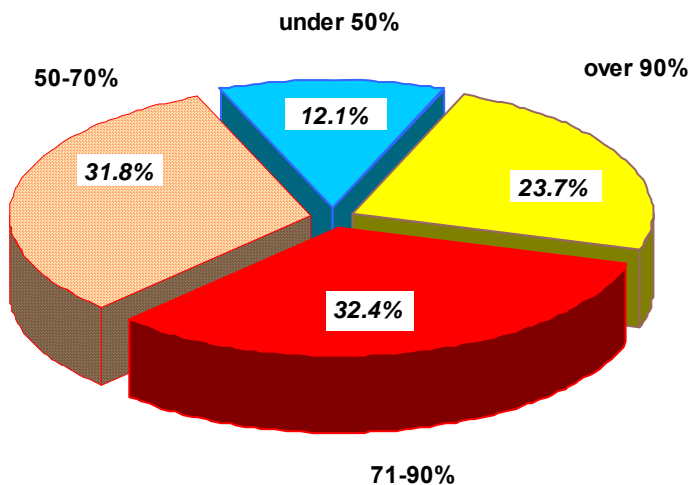
ICD-10	<i>Classes</i>	<i>Number</i>	<i>Per 100000 population</i>	<i>Structure (%)</i>
	Total	1075512	22704.8	100.0
	I. Certain infectious and parasitic diseases	20683	436.6	1.9
	II. Neoplasms	78613	1659.6	7.3
	III. Diseases of the blood and blood-forming organs and certain disorders involving the immune mechanism	7332	154.8	0.7
	IV. Endocrine, nutritional and metabolic diseases	41601	878.2	3.9
	V. Mental and behavioural disorders	42113	889.0	3.9
	VI. Diseases of the nervous system	44278	934.7	4.1
	VII. Diseases of the eye and adnexa	24009	506.8	2.2
	VIII. Diseases of the ear and mastoid process	18044	380.9	1.7
	IX. Diseases of the circulatory system	118857	2509.2	11.0
	X. Diseases of the respiratory system	62830	1326.4	5.8
	XI. Diseases of the digestive system	99809	2107.0	9.3
	XII. Diseases of the skin and subcutaneous tissue	24665	520.7	2.3
	XIII. Diseases of the musculoskeletal system and connective tissue	65408	1380.8	6.1
	XIV. Diseases of the genitourinary system	97807	2064.8	9.1
	XV. Pregnancy, childbirth and the puerperium	127971	2701.6	11.9
	XVI. Certain conditions originating in the perinatal period	x	x	x
	XVII. Congenital malformations, deformations and chromosomal abnormalities	1035	21.9	0.1
	XVIII. Symptoms, signs and abnormal clinical and laboratory findings, not elsewhere classified	4082	86.2	0.4
	XIX. Injury, poisoning and certain other consequences of external causes	61202	1292.0	5.7
	XXI. Factors influencing health status and contact with health services	135173	2853.6	12.6

11. Hospitalized Patients (discharged and deceased) in Hospitals over 65 Years of Age by Classes of ICD-10 in 2012

ICD-10	<i>Classes</i>	<i>Number</i>	<i>Per 100000 population</i>	<i>Structure (%)</i>
	Total	665850	47969.2	100.00
I.	Certain infectious and parasitic diseases	6556	472.3	1.0
II.	Neoplasms	53879	3881.6	8.1
III.	Diseases of the blood and blood-forming organs and certain disorders involving the immune mechanism	5705	411.0	0.9
IV.	Endocrine, nutritional and metabolic diseases	24856	1790.7	3.7
V.	Mental and behavioural disorders	5262	379.1	0.8
VI.	Diseases of the nervous system	23249	1674.9	3.5
VII.	Diseases of the eye and adnexa	36569	2634.5	5.5
VIII.	Diseases of the ear and mastoid process	9431	679.4	1.4
IX.	Diseases of the circulatory system	171555	12359.2	25.8
X.	Diseases of the respiratory system	51880	3737.5	7.8
XI.	Diseases of the digestive system	62134	4476.3	9.3
XII.	Diseases of the skin and subcutaneous tissue	11265	811.5	1.7
XIII.	Diseases of the musculoskeletal system and connective tissue	31088	2239.6	4.7
XIV.	Diseases of the genitourinary system	41889	3017.8	6.3
XV.	Pregnancy, childbirth and the puerperium	x	x	x
XVI.	Certain conditions originating in the perinatal period	x	x	x
XVII.	Congenital malformations, deformations and chromosomal abnormalities	142	10.2	0.0
XVIII.	Symptoms, signs and abnormal clinical and laboratory findings, not elsewhere classified	4178	301.0	0.6
XIX.	Injury, poisoning and certain other consequences of external causes	30168	2173.4	4.5
XXI.	Factors influencing health status and contact with health services	96044	6919.2	14.4

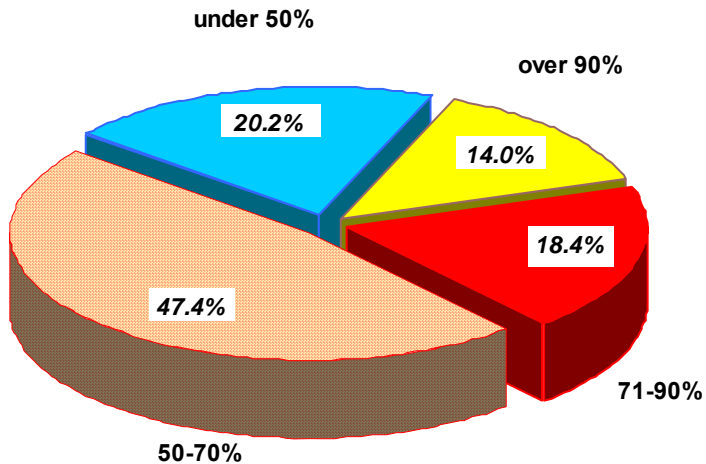
12. Primary Disability of Persons over 16 Years of Age

Year	Loss of capacity to work								total	
	Over 90%		71% – 90%		50% – 70%		under 50%			
	number	%	number	%	number	%	number	%	number	per 1000 population over 16 years of age
2001	29335	36.8	31394	39.3	14847	18.6	4227	5.3	79803	12.1
2004	38413	28.8	56862	42.7	28365	21.3	9611	7.2	133251	20.2
2005	28451	24.7	44452	38.6	28837	25.0	13438	11.7	115178	17.5
2009	16330	23.6	24082	34.9	21019	30.4	7647	11.1	69078	10.7
2010	14764	22.9	21002	32.6	20746	32.2	7935	12.3	64447	10.0
2011	15803	24.6	21012	32.6	20524	31.9	7031	10.9	64370	10.2
2012	14715	23.7	20114	32.4	19749	31.8	7469	12.1	62047	9.9



13. Primary Disability of Persons under 16 Years of Age

Year	Loss of capacity								total	
	over 90%		71% – 90%		50% – 70%		under 50%			
	number	%	number	%	number	%	number	%	number	per 1000 population under 16 years of age
2001	2570	37.8	1757	25.8	1735	25.5	740	10.9	6802	5.1
2004	1222	20.7	1181	20.0	2645	44.9	851	14.4	5899	5.0
2005	801	17.1	819	17.5	4674	4.0
2009	517	14.4	453	12.7	3578	3.3
2010	628	16.4	570	14.9	3833	3.5
2011	793	16.5	1150	24.0	1991	41.5	863	18.0	4797	4.6
2012	638	14.0	842	18.4	2164	47.4	922	20.2	4566	4.4



14. Primary Disability of Persons over 16 Years of Age by Class of Disease and Loss of Capacity to work in 2012

(number)

ICD-10	Classes	over 90%	71%–90%	50%–70%	under 50%	Total
	Total	14715	20114	19749	7469	62047
	I.Certain infectious and parasitic diseases	57	460	104	65	686
	II.Neoplasms	6653	4978	1022	123	12776
	IV.Endocrine, nutritional and metabolic diseases	290	1235	2288	860	4673
	V.Mental and behavioural disorders	777	1187	1204	154	3322
	VI.Diseases of the nervous system	578	708	722	307	2315
	VII.Diseases of the eye and adnexa	402	435	687	195	1719
	VIII.Diseases of the ear and mastoid process	34	252	488	239	1013
	IX.Diseases of the circulatory system	4034	7871	8007	2715	22627
	X.Diseases of the respiratory system	29	131	624	484	1268
	XI.Diseases of the digestive system	231	383	464	153	1231
	XIII.Diseases of the musculoskeletal system and connective tissue	686	1542	2253	1289	5770
	XIV.Diseases of the genitourinary system	304	276	573	169	1322
	XVII.Congenital malformations, deformations and chromosomal abnormalities	16	50	127	74	267
	XIX.Injury, poisoning and certain other consequences of external causes	600	497	982	576	2655
	Other classes	24	109	204	66	403

15. Primary Disability of Persons under 16 Years of Age by Class of Disease and Loss of Capacity in 2012

(number)

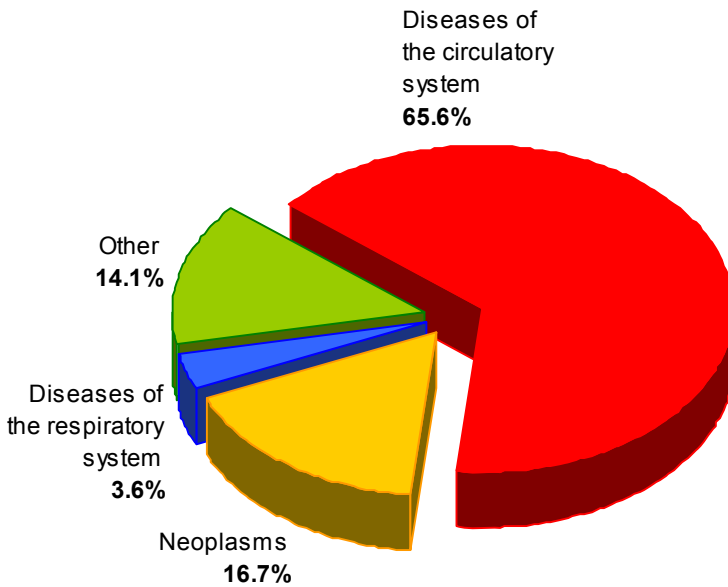
ICD-10	Classes	over 90%	71%–90%	50%–70%	under 50%	Total
	Total	638	842	2164	922	4566
	I.Certain infectious and parasitic diseases	-	66	26	8	100
	II.Neoplasms	106	19	22	1	148
	III.Diseases of the blood and blood-forming organs and certain disorders involving the immune mechanism	6	14	13	11	44
	IV.Endocrine, nutritional and metabolic diseases	14	73	137	13	237
	V.Mental and behavioural disorders	94	250	248	101	693
	VI.Diseases of the nervous system	197	141	347	80	765
	VII.Diseases of the eye and adnexa	15	23	60	45	143
	VIII.Diseases of the ear and mastoid process	1	67	68	21	157
	IX.Diseases of the circulatory system	1	3	6	5	15
	X.Diseases of the respiratory system	5	4	722	476	1207
	XI.Diseases of the digestive system	11	3	31	5	50
	XIII.Diseases of the musculoskeletal system and connective tissue	4	17	40	19	80
	XIV.Diseases of the genitourinary system	-	10	29	10	49
	XVII.Congenital malformations, deformations and chromosomal abnormalities	174	135	352	95	756
	XIX.Injury, poisoning and certain other consequences of external causes	7	6	31	13	57
	Other classes	3	11	32	19	65

16. Mortality by Causes in 2012

<i>Cause of death (ICD-10)</i>	<i>Number</i> ¹⁾	<i>Per 100000 population</i>	<i>Percentage (%)</i>
Total	109281	1496.1	100.0
Certain infectious and parasitic diseases	626	8.6	0.6
Neoplasms	18299	250.5	16.7
Diseases of the blood and blood-forming organs and certain disorders involving the immune mechanism	135	1.8	0.1
Endocrine, nutritional and metabolic diseases	1723	23.6	1.6
Mental and behavioural disorders	87	1.2	0.1
Diseases of the nervous system	1124	15.4	1.0
Diseases of the eye and adnexa	4	0.1	0.0
Diseases of the ear and mastoid process	3	0.0	0.0
Diseases of the circulatory system	71644	980.8	65.6
Diseases of the respiratory system	3974	54.4	3.6
Diseases of the digestive system	3553	48.6	3.3
Diseases of the skin and subcutaneous tissue	32	0.4	0.0
Diseases of the musculoskeletal system and connective tissue	48	0.7	0.1
Diseases of the genitourinary system	1350	18.5	1.2
Pregnancy, childbirth and the puerperium	3	0.0	0.0
Certain conditions originating in the perinatal period	237	3.3	0.2
Congenital malformations, deformations and chromosomal abnormalities	143	2.0	0.1
Symptoms, signs and abnormal clinical and laboratory findings, not elsewhere classified	3238	44.3	3.0
External causes of morbidity and mortality	3058	41.9	2.8

¹⁾ NSI data

Mortality by Causes in 2012



III. HEALTH FACILITIES

1. Health Facilities and Hospital Beds on 31.XII.2012

<i>Types of health establishments</i>	<i>Number</i>	<i>Beds</i>
Health establishments for hospital care – total	312	45726
Multiprofile hospitals	114	24912
Multiprofile hospital for active treatment	113	24872
Specialized hospitals	73	7755
Specialized hospital for active treatment	37	3700
Specialized hospital for continuing and long term treatment	5	251
Specialized hospital for continuing, long term treatment and rehabilitation	12	980
Specialized hospital for rehabilitation	19	2824
Psychiatric hospitals	12	2438
Private facilities for hospital care	92	6916
Health facilities for outpatient care (from Health establishments' reports)		
Outpatient facilities for primary medical care – individual practices	3575	–
Outpatient facilities for primary dental care – individual practices	5046	–
Outpatient facilities for primary medical care – group practices	223	–
Outpatient facilities for primary dental care – group practices	300	–
Outpatient facilities for specialized medical care – individual practices	3050	–
Outpatient facilities for specialized dental care – individual practices	76	–

1. Health Facilities and Hospital Beds on 31.XII.2012

(continued from previous)

<i>Types of health establishments</i>	<i>Number</i>	<i>Beds</i>
Outpatient facilities for specialized medical care – group practices	149	–
Outpatient facilities for specialized dental care – group practices	1	–
Medical center	575	588
Dental center	49	7
Medico-dental center	33	15
Diagnostic-consulting center	121	228
Stand-alone medico-diagnostic and medico-technical laboratories	1026	–
Other healthcare and health establishments		
Integral oncological centers	7	1144
Centers for dermato-venerological diseases	8	80
Centers for mental health	12	1358
Emergency healthcare centers	28	–
Stand alone centers for transfusional haematology	4	–
Medico-social care for children centers	30	3624
Hospises	41	802
National centers without beds	7	–
Regional centers for health	28	–
Sanatorial facilities	1	244

2. Beds in Hospitals on 31.XII.2012 by Type

<i>Type of beds</i>	<i>Number of beds</i>	<i>Percentage (%)</i>	<i>Per 10 000 population</i>
Total¹⁾	45726		62.8
Incl.:			
Total²⁾	42021	100.0	57.7
Incl.:			
Reanimation and intensive care	2371	5.6	3.3
incl.: internal diseases	91	0.2	0.1
cardiological	388	0.9	0.5
pediatric	153	0.3	0.2
surgical	118	0.3	0.2
neurological	257	0.6	0.4
gynecological	31	0.1	0.0
intensive care ward	1134	2.7	1.6
other	199	0.5	0.3
For active treatment	32609	77.6	44.8
incl.: internal diseases	2554	6.1	3.5
gastroenterological	1130	2.7	1.6
endocrinological	611	1.5	0.8
cardiological	1970	4.7	2.7
reumocardiological	413	1.0	0.6
pulmophthysiatrical	2047	4.9	2.8
nephrological	533	1.3	0.7
haematological	413	1.0	0.6
pediatric	2214	5.3	3.0
micropediatric	412	1.0	0.6
neonatological	1236	2.9	1.7

¹⁾ Hospital beds of other administrations included, but not allocated by type.

²⁾ Hospital beds of other administrations not included.

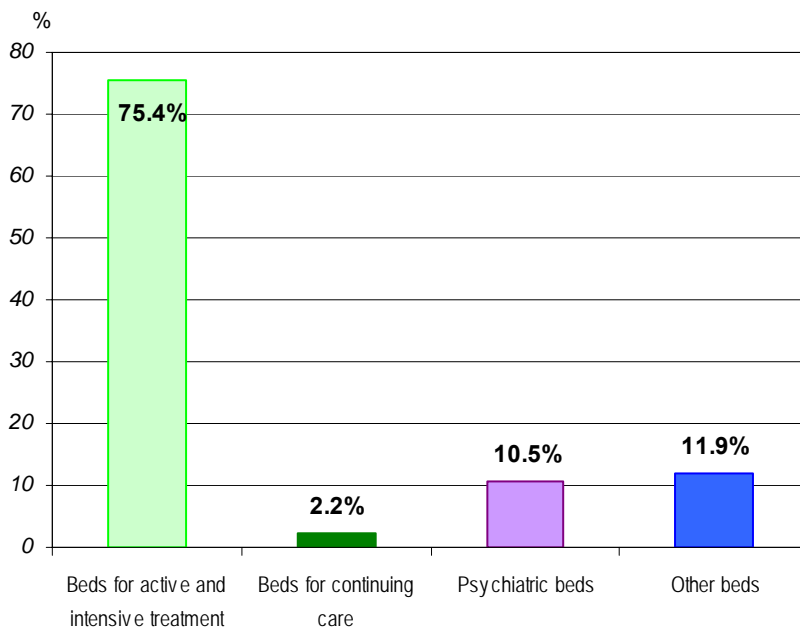
2. Beds in Hospitals on 31.XII.2012 by Type

(continued from previous)

<i>Type of beds</i>	<i>Number of beds</i>	<i>Percentage (%)</i>	<i>Per 10 000 population</i>
surgical	4049	9.6	5.6
traumatological	1737	4.1	2.4
urological	869	2.1	1.2
neurosurgical	428	1.0	0.6
gynecological	1139	2.7	1.6
obstetrics	1319	3.1	1.8
pathological pregnancy	682	1.6	0.9
infectious	816	1.9	1.1
ophthalmological	696	1.7	1.0
oto-rhino-laryngological	679	1.6	0.9
psychiatric	2493	5.9	3.4
neurological	2736	6.5	3.7
dermato-venerological	266	0.6	0.4
toxicological	64	0.2	0.1
oncological	1103	2.6	1.5
For continuing and long term treatment	6726	16.0	9.2
incl.: internal diseases	331	0.8	0.5
cardiological	-	-	-
rheumatological	-	-	-
pulmophthysiatrical	468	1.1	0.7
orthopaedo-traumatological	-	-	-
psychiatric	541	1.3	0.7
neurological	102	0.2	0.1
premature baby, hypotrophy, or birth defects	33	0.1	0.0
physiotherapeutic and rehabilitation	5178	12.3	7.1
other	73	0.2	0.1
Day care	315	0.8	0.4

3. Beds in Hospitals and Other Healthcare Establishments on 31.XII.2012 by Type¹⁾

Type of beds	Number of beds	Percentage (%)	Per 10 000 population
Total²⁾	48308		66.3
Incl.:			
Total³⁾	44603	100.0	61.3
Incl.:			
Beds for active and intensive treatment	33641	75.4	46.2
Beds for continuing care	1007	2.2	1.4
Psychiatric beds	4665	10.5	6.4
Other beds	5290	11.9	7.3
Incl.:			
physiotherapeutic and rehabilitation	5178	11.6	7.1
day care	112	0.3	0.2



¹⁾ According to statistical grouping used by Eurostat.

²⁾ Hospital beds of other administrations included, but not allocated by type.

³⁾ Hospital beds of other administrations not included.

IV. MEDICAL PERSONNEL

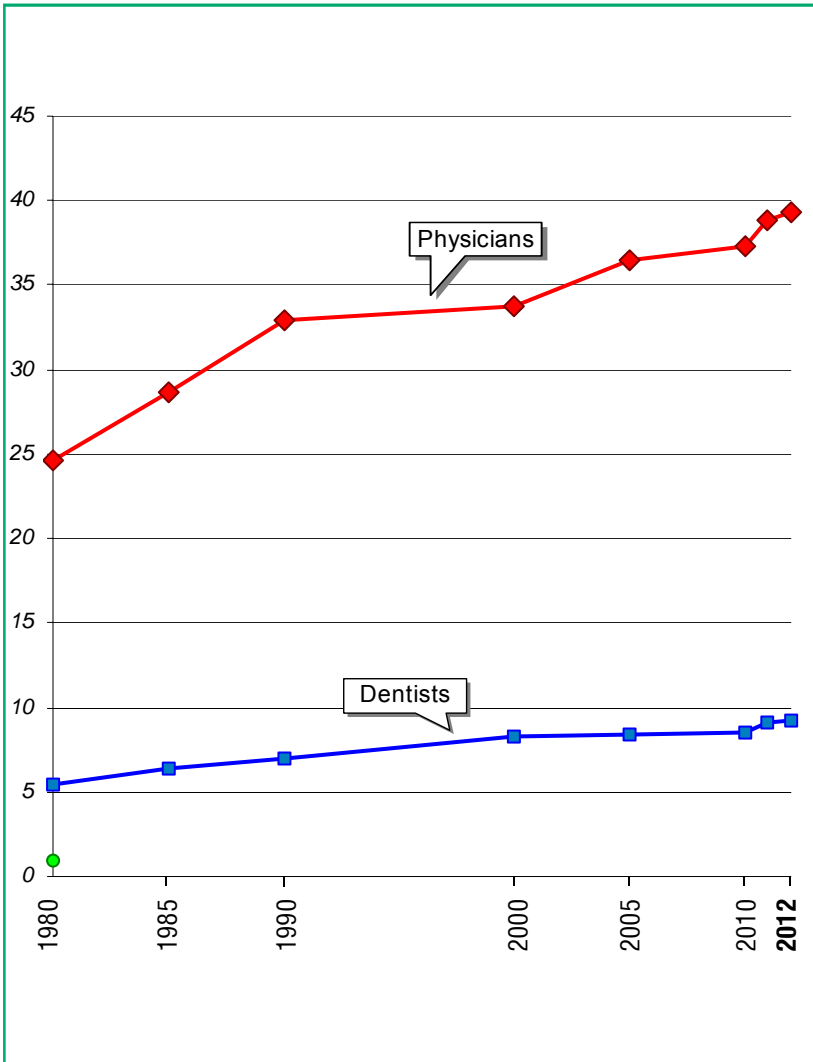
1. Medical Personnel¹⁾

	1980	1990	2000	2010	2011	2012
Number						
Physicians	21796	28497	27526	27997	28411	28643
Dentists	4839	6109	6778	6355	6655	6706
Auxiliary medical personnel	77532	88387	49840	47468	47427	47806
Incl.:						
med.assist.	7355	7617	3158	2417	2439	2456
midwives	7897	7544	4131	3247	3270	3291
nurses	45449	53810	31479	31786	31609	32059
clinical laboratory and X-ray technicians	6757	7604	5964	5765	5837	5731
dental technicians	2342	2858	1305	1280	1514	1494
other	7732	8954	3803	2973	2758	2775
Per 10 000 population						
Physicians	24.6	32.9	33.8	37.3	38.8	39.3
Dentists	5.4	7.0	8.3	8.5	9.1	9.2
Auxiliary medical personnel	87.3	102.0	61.2	63.2	64.7	65.6
Population per:						
one physician	407	304	296	268	258	254
one dentist	1834	1419	1202	1181	1101	1086

¹⁾ NSI data

Medical Personnel

(per 10 000 population)



2. Physicians by Speciality¹⁾

<i>Specialties</i>	<i>2011</i>		<i>2012</i>	
	<i>number</i>	<i>per 10000 population</i>	<i>number</i>	<i>per 10000 population</i>
Physicians-total²⁾	28411	38.8	28643	39.3
incl.:				
internal medicine	1467	2.0	1388	1.9
gastroenterology	423	0.6	437	0.6
endocrinology	375	0.5	392	0.5
cardiology	1112	1.5	1143	1.6
nephrology	318	0.4	323	0.4
haematology	139	0.2	145	0.2
pulmophytisyatry	529	0.7	512	0.7
pediatry	1423	1.9	1426	2.0
surgery	1474	2.0	1464	2.0
traumatology	740	1.0	775	1.1
urology	391	0.5	415	0.6
neurosurgery	157	0.2	167	0.2
infectious	201	0.3	211	0.3
gynecology	1386	1.9	1395	1.9
ophthalmology	678	0.9	642	0.9
oto-rhino-laryngology	519	0.7	522	0.7
neurology	1186	1.6	1177	1.6
psychiatry	565	0.8	523	0.7
dermato-venerology	360	0.5	358	0.5
anaesthesiology	1439	2.0	1455	2.0
roentgenology	860	1.2	851	1.2
laboratory physicians	613	0.8	615	0.8
physiotherapy and rehabilitation	477	0.7	479	0.7
urgent care medicine	984	1.3	991	1.4

¹⁾ NSI data

²⁾ Physicians-oncologists are included in the respective general speciality – internists, surgeons etc.

V. ACTIVITIES OF THE HEALTH FACILITIES

1. Activities of the Inpatient Wards of the Hospital Health Care Facilities in 2012

<i>Types of establishments</i>	<i>Admitted</i>	<i>Discharged</i>	<i>Deceased</i>
Healthcare establishments for hospital care – total¹⁾	1881820	1858829	24753
Multiprofile hospitals	1209032	1188312	22107
Multiprofile hospital for active treatment	1208980	1188259	22107
Specialized hospitals	286569	285578	1185
Specialized hospital for active treatment	165968	165212	1011
Specialized hospital for continuing and long term treatment	9988	9876	19
Specialized hospital for continuing, long term treatment and rehabilitation	24108	23968	153
Specialized hospital for rehabilitation	86505	86522	2
Psychiatric hospitals	10082	10058	94
Private facilities for hospital care	376137	374881	1367
Integral oncological centers	57325	57088	345
Centers for dermato-venerological diseases	3323	3333	1
Centers for mental health	19513	19473	23

¹⁾ Excl. facilities of other administrations.

1. Activities of the Inpatient Wards of the Hospital Health Care Facilities in 2012

(continued from previous)

<i>Types of establishments</i>	<i>Bed days</i>	<i>Utiliza- tion of beds (days)</i>	<i>Turn- over of beds</i>	<i>Average length of stay (days)</i>	<i>Hospital morta- lity (%)</i>
Healthcare establishments for hospital care – total¹⁾	10555667	256	46	5.6	1.3
Multiprofile hospitals	6535847	266	50	5.4	1.8
Multiprofile hospital for active treatment	6535483	266	50	5.4	1.8
Specialized hospitals	1966547	261	38	6.8	0.4
Specialized hospital for active treatment	986670	278	47	5.9	0.6
Specialized hospital for continuing and long term treatment	82244	302	37	8.2	0.2
Specialized hospital for continuing, long term treat- ment and rehabilitation	245772	260	26	10.1	0.6
Specialized hospital for rehabilitation	651861	235	31	7.5	0.0
Psychiatric hospitals	690314	282	5	58.5	0.9
Private facilities for hospital care	1362959	204	57	3.6	0.4
Integral oncological centers	311286	270	50	5.4	0.6
Centers for dermato- venerological diseases	26364	293	37	7.9	0.0
Centers for mental health	403795	300	15	19.9	0.1

¹⁾ Excl. facilities of other administrations.

2. Utilization, Turnover and Average Length of Stay in Health Care Facilities in 2012 by Type of Beds

<i>Type of bed</i>	<i>Utilization (days)</i>	<i>Turnover</i>	<i>Average length of stay (days)</i>
Total¹⁾	256	46	5.6
Incl.:			
Reanimation and intensive care	201	68	3.0
incl.: internal diseases	207	56	3.7
cardiological	225	98	2.3
pediatric	221	49	4.6
surgical	185	55	3.4
neurological	252	56	4.5
gynecological	90	61	1.5
intensive care ward	175	69	2.5
other	260	43	6.0
For active treatment	263	54	4.8
incl.: internal diseases	242	51	4.8
gastroenterological	254	62	4.1
endocrinological	261	53	4.9
cardiological	254	67	3.8
reumocardiological	269	66	4.1
pulmophtysiatrical	292	32	9.1
nephrological	275	52	5.3
haematological	373	76	4.9
pediatric	268	49	5.4
micropediatric	279	45	6.2
neonatological	263	55	4.8
surgical	252	61	4.1

¹⁾ Excl. facilities of other administrations.

2. Utilization, Turnover and Average Length of Stay in Health Care Facilities in 2012 by Type of Beds

(continued from previous)

<i>Type of bed</i>	<i>Utilization (days)</i>	<i>Turnover</i>	<i>Average length of stay (days)</i>
orthopaedo-traumatological	250	55	4.5
urological	264	72	3.7
neurosurgical	263	49	5.3
gynecological	204	80	2.6
obstetrics	237	65	3.6
pathological pregnancy	246	65	3.8
infectious	246	49	5.1
ophtalmological	199	101	2.0
oto-rhino-laryngological	245	64	3.8
psychiatric	300	11	27.8
neurological	273	56	4.9
dermato-venerological	273	36	7.6
toxicological	194	68	2.8
oncological	346	63	5.5
For continuing and long term treatment	235	28	8.4
incl.: internal diseases	145	12	12.2
cardiological	-	-	-
rheumatological	-	-	-
pulmophthysiatrical	308	29	10.5
traumatological	-	-	-
psychiatric	245	3	78.9
neurological	150	33	4.5
premature baby, hypotrophy, or birth defects	187	17	11.2
physiotherapeutic and rehabilitation	235	31	7.5
other	14	2	6.6
Day care	319	42	7.6

3. Women in childbirth served at inpatient healthcare facilities

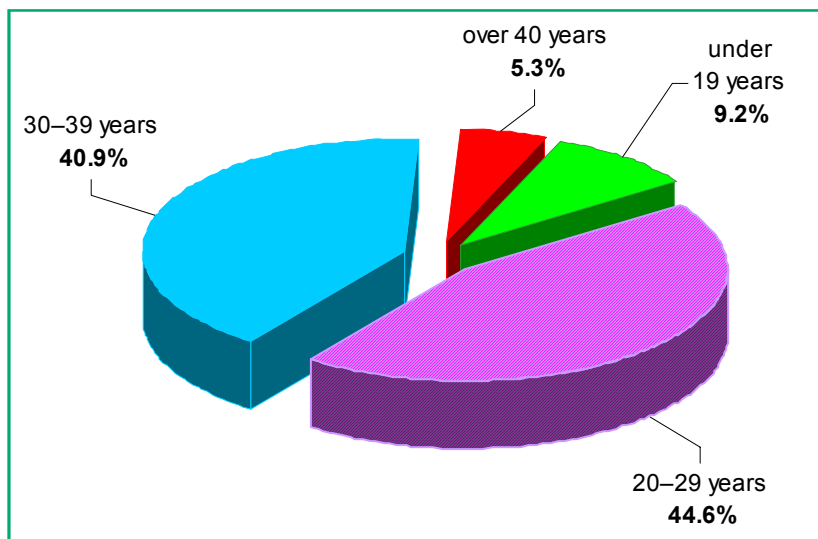
	2000	2005	2011	2012
Women giving birth at healthcare facilities	71107	67845	64253	63423
incl. cases of:				
transverse or oblique presentation	234	327	405	411
of these: unattended	23	19	12	5
Narrow pelvis	857	715	1035	1123
pelvic malpositions	1693	1952	1914	1692
complicated by:				
hemorrhages	1518	884	971	875
extragenital diseases	629	779	634	748
of these: cardiovascular	148	160	141	112
diabetes mellitus	79	128	225	221
Admitted women after childbirth outside health facilities	793	401	348	291
Total number of women in childbirth attended	71900	68246	64601	63714
of these: multiple gestation	614	582	963	1025
Distribution of women in childbirth by age				
up to 19 years of age	12669	9863	7047	6922
from 20 to 35 years of age	56185	54407	51321	50293
above 35 years of age	3046	3976	6233	6499

4. Medical Abortions in Health Facilities during 2012 by Age Group and Type of Abortion

(Number)

Age group	Total	Type of abortions			
		Medical indicated	Spontaneous	Illegal	Legal
Total	29992	2930	9821	1	17240
< 15	111	27	68	-	16
15-19	2633	169	1039	-	1425
20-24	6135	294	1842	-	3999
25-29	7251	487	2473	-	4291
30-34	7245	585	2341	1	4318
35-39	5027	1001	1558	-	2468
40-44	1464	318	459	-	687
45-49	114	42	38	-	34
> 50	12	7	3	-	2

Medical Abortions by Age



5. Medical Abortions in Health Facilities

(Number)

	1980	1985	1990	1995	2000	2011	2012
Total	156056	132269	144644	97092	61378	31716	29992
incl:							
medically indicated	3830	5586	4352	4073	2567	2502	2930
spontaneous abortions	15787	14245	12601	9851	10626	9689	9821
illegal abortions	180	228	91	69	29	–	1
legal abortions	136259	112210	127600	83099	48156	19525	17240

6. Persons Served by the Centers for Urgent Medical Care and Urgent Wards

	2011		2012	
	Number	(%)	Number	(%)
Persons attended – total	2496265	100.0	2466151	100.0
Incl.:				
Centers for urgent medical care	1279529	51.3	1304527	52.9
incl. at calls performed	690363	27.7	721534	29.3
Urgent wards	1179226	47.2	1119269	45.4

7. Number and Type of Surgeries of Patients, Discharged from Hospitals in 2012

<i>Type of surgery</i>	<i>Discharged surgical patients</i>	<i>Incl.:</i>		<i>Lethality (%)</i>
		<i>with compli- cations</i>	<i>dead</i>	
Total	545600	2469	3568	0.7
Surgery of gastrointestinal tract	79176	537	1342	1.7
Apendectomy due to acute appendicits	8108	18	13	0.2
Herniotomy due to unobstructed hernia	18769	35	9	0.0
Obstetrics-gynecological surgeries	116565	376	17	0.0
Endocrine surgeries	3025	4	1	0.0
Orthopaedics-traumatology surgeries	85782	326	359	0.4
Chest surgeries	15173	153	172	1.1
Urological surgeries	53917	184	140	0.3
Otho-Rhino-Larhingological surgeries	33152	24	37	0.1
Tonsillectomy	4218	4	-	-
Ophtalmological surgeries	49337	19	1	0.0
Catharacta	25966	9	1	0.0
Neurosurgeries	9209	51	414	4.5
Cardiovascular surgeries	10931	277	305	2.8
Vascular surgeries	13115	220	187	1.4
Facial and dental surgeries	8581	13	7	0.1
Plastic, reconstructive and esthetic surgeries	4964	8	37	0.7
Other surgical interventions	62673	277	549	0.9

**8. Number and Type of Surgeries of Patients,
Discharged from Hospitals in 2012
by type of healthcare facility**

<i>Type of surgery</i>	<i>Total</i>	<i>Multiprofile hospitals for active treatment</i>	<i>Specialized hospitals for active treatment</i>
Total	545600	316130	40303
Surgery of gastrointestinal tract	79176	45868	2058
Apendectomy due to acute appendicits	8108	6620	4
Herniotomy due to unobstructed hernia	18769	11246	212
Obstetrics-gynecological surgeries	116565	64566	18736
Endocrine surgeries	3025	1067	732
Orthopaedics-traumatology surgeries	85782	48595	3223
Chest surgeries	15173	6260	3573
Urological surgeries	53917	34316	727
Otho-Rhino-Larhingological surgeries	33152	23013	395
Tonsillectomy	4218	2384	17
Ophtalmological surgeries	49337	21253	2748
Catharacta	25966	11200	1136
Neurosurgeries	9209	7181	139
Cardiovascular surgeries	10931	5497	2549
Vascular surgeries	13115	7081	1679
Facial and dental surgeries	8581	5303	1671
Plastic, reconstructive and esthetic surgeries	4964	3354	35
Other surgical interventions	62673	42776	2038

**8. Number and Type of Surgeries of Patients,
Discharged from Hospitals in 2012
by type of healthcare facility**

(continued from previous)

<i>Type of surgery</i>	<i>Private facilities for hospital care</i>	<i>Other facilities for hospital care</i>	<i>Integral oncological centers</i>
Total	156937	20493	11737
Surgery of gastrointestinal tract	25784	4352	1114
Apendectomy due to acute appendicitis	1323	156	5
Herniotomy due to unobstructed hernia	6124	1178	9
Obstetrics-gynecological surgeries	28672	1234	3357
Endocrine surgeries	908	255	63
Orthopaedics-traumatology surgeries	30469	3492	3
Chest surgeries	1448	965	2927
Urological surgeries	14391	2923	1560
Otho-Rhino-Larhingological surgeries	8373	1143	228
Tonsillectomy	1676	141	-
Ophtalmological surgeries	24077	1259	-
Catharacta	12809	821	-
Neurosurgeries	1596	293	-
Cardiovascular surgeries	2704	181	-
Vascular surgeries	3270	994	91
Facial and dental surgeries	885	722	-
Plastic, reconstructive and esthetic surgeries	1387	164	24
Other surgical interventions	12973	2516	2370

VI. ECONOMICAL INDICATORS OF THE HEALTH FACILITIES FOR 2012

(in leva)

<i>Types of health facilities</i>	<i>Average costs:</i>				
	Per patient	Per bed	Per bed day	Per medicine day	Per food day
Multiprofile hospital for active treatment					
Regional	666.69	34085	123.70	24.61	2.07
Municipal	498.46	22967	97.56	13.44	1.75
City	590.00	29211	116.55	17.78	2.98
Specialized hospital for active treatment					
Pulmonary diseases	610.08	15731	52.07	10.43	2.00
Gynecological diseases	584.74	27938	132.30	20.22	1.47
State psychiatric hospitals	1737.36	8308	29.47	2.15	2.13
Pulmophtysiatrical diseases	566.58	14460	51.28	9.19	3.52
Other healthcare establishments for hospital care					
Integral oncological centers	1074.17	63732	231.99	135.69	2.38
Centers for dermatovenerological diseases	534.46	19929	68.03	7.13	2.90
Centers for mental health	750.47	11631	38.04	2.97	2.65

VII. REVIEW BY REGIONS
1. Population on 31.XII.2012¹⁾

<i>Regions</i>	<i>Total</i>	<i>Male</i>	<i>Female</i>	<i>Urban</i>	<i>Rural</i>
Number					
Total	7282041	3543606	3738435	5306233	1975808
Blagoevgrad	319647	156469	163178	189562	130085
Bourgas	413474	202177	211297	309499	103975
Varna	473236	231595	241641	396307	76929
V. Tarnovo	253503	122408	131095	176665	76838
Vidin	97536	47599	49937	62320	35216
Vratza	181559	89453	92106	107088	74471
Gabrovo	119926	58002	61924	98322	21604
Dobrich	186357	91413	94944	128669	57688
Kardgali	151319	75153	76166	62931	88388
Kjustendil	132792	64774	68018	91689	41103
Lovetch	137708	67423	70285	85961	51747
Montana	143644	70544	73100	92157	51487
Pazardgik	271681	133682	137999	169300	102381
Pernik	130230	63736	66494	102887	27343
Pleven	263020	129061	133959	175187	87833
Plovdiv	678818	327550	351268	506095	172723
Razgrad	122173	59812	62361	57772	64401
Rousse	231556	112902	118654	178391	53165
Silistra	117196	58049	59147	52826	64370
Sliven	195385	95396	99989	129231	66154
Smoljan	118778	57872	60906	65314	53464
Sofia-capital	1301683	621156	680527	1241396	60287
Sofia	243236	119702	123534	148780	94456
St. Zagora	329864	160715	169149	236634	93230
Targovishte	118769	58321	60448	64329	54440
Haskovo	241656	118056	123600	174900	66756
Shoumen	178735	87463	91272	112048	66687
Yambol	128560	63123	65437	89973	38587

¹⁾ NSI data

1. Population on 31.XII.2012

(continued from previous)

<i>Regions</i>	<i>Total</i>	<i>Male</i>	<i>Female</i>	<i>Urban</i>	<i>Rural</i>
Percentage (%)					
Total	100.0	48.7	51.3	72.9	27.1
Blagoevgrad	100.0	49.0	51.0	59.3	40.7
Bourgas	100.0	48.9	51.1	74.9	25.1
Varna	100.0	48.9	51.1	83.7	16.3
V. Tarnovo	100.0	48.3	51.7	69.7	30.3
Vidin	100.0	48.8	51.2	63.9	36.1
Vratza	100.0	49.3	50.7	59.0	41.0
Gabrovo	100.0	48.4	51.6	82.0	18.0
Dobrich	100.0	49.1	50.9	69.0	31.0
Kardgali	100.0	49.7	50.3	41.6	58.4
Kjustendil	100.0	48.8	51.2	69.0	31.0
Lovetch	100.0	49.0	51.0	62.4	37.6
Montana	100.0	49.1	50.9	64.2	35.8
Pazardgik	100.0	49.2	50.8	62.3	37.7
Pernik	100.0	48.9	51.1	79.0	21.0
Pleven	100.0	49.1	50.9	66.6	33.4
Plovdiv	100.0	48.3	51.7	74.6	25.4
Razgrad	100.0	49.0	51.0	47.3	52.7
Rousse	100.0	48.8	51.2	77.0	23.0
Silistra	100.0	49.5	50.5	45.1	54.9
Sliven	100.0	48.8	51.2	66.1	33.9
Smoljan	100.0	48.7	51.3	55.0	45.0
Sofia-capital	100.0	47.7	52.3	95.4	4.6
Sofia	100.0	49.2	50.8	61.2	38.8
St. Zagora	100.0	48.7	51.3	71.7	28.3
Targovishte	100.0	49.1	50.9	54.2	45.8
Haskovo	100.0	48.9	51.1	72.4	27.6
Shoumen	100.0	48.9	51.1	62.7	37.3
Yambol	100.0	49.1	50.9	70.0	30.0

2. Live Births in 2012¹⁾

<i>Regions</i>	<i>Total</i>	<i>Urban</i>	<i>Rural</i>	<i>Total</i>	<i>Urban</i>	<i>Rural</i>
	Number			Per 1000 population		
Total	69121	51658	17463	9.5	9.7	8.8
Blagoevgrad	3044	1896	1148	9.5	10.0	8.8
Bourgas	4170	3061	1109	10.1	9.9	10.6
Varna	4732	3975	757	10.0	10.0	9.8
V. Tarnovo	2300	1679	621	9.0	9.5	8.0
Vidin	713	522	191	7.2	8.3	5.3
Vratza	1526	850	676	8.3	7.9	9.0
Gabrovo	876	726	150	7.3	7.3	6.9
Dobrich	1689	1113	576	9.0	8.6	9.9
Kardgali	1435	637	798	9.5	10.1	9.0
Kjustendil	1015	824	191	7.6	8.9	4.6
Lovetch	1195	749	446	8.6	8.7	8.5
Montana	1249	827	422	8.6	8.9	8.1
Pazardgik	2663	1720	943	9.8	10.1	9.2
Pernik	959	837	122	7.3	8.1	4.4
Pleven	2296	1555	741	8.7	8.8	8.4
Plovdiv	6694	5183	1511	9.8	10.2	8.7
Razgrad	1142	480	662	9.3	8.3	10.2
Rousse	1891	1514	377	8.1	8.5	7.0
Silistra	1024	409	615	8.7	7.7	9.5
Sliven	2349	1418	931	12.0	10.9	14.0
Smoljan	784	471	313	6.6	7.2	5.8
Sofia-capital	13597	13156	441	10.5	10.6	7.3
Sofia	2092	1450	642	8.6	9.7	6.7
St. Zagora	3246	2347	899	9.8	9.9	9.6
Targovishte	1214	605	609	10.2	9.4	11.1
Haskovo	2190	1637	553	9.0	9.3	8.2
Shoumen	1777	1089	688	9.9	9.7	10.3
Yambol	1259	928	331	9.7	10.3	8.5

¹⁾ NSI data

3. Deaths in 2012¹⁾

<i>Regions</i>	<i>Total</i>	<i>Urban</i>	<i>Rural</i>	<i>Total</i>	<i>Urban</i>	<i>Rural</i>
	Number			Per 1000 population		
Total	109281	66333	42948	15.0	12.5	21.6
Blagoevgrad	3896	2060	1836	12.1	10.8	14.0
Bourgas	5557	3648	1909	13.4	11.8	18.3
Varna	5728	4187	1541	12.1	10.6	19.9
V. Tarnovo	4303	2172	2131	16.9	12.3	27.5
Vidin	2287	914	1373	23.2	14.6	38.3
Vratza	3561	1494	2067	19.4	13.9	27.4
Gabrovo	2233	1520	713	18.5	15.4	32.6
Dobrich	2961	1620	1341	15.8	12.5	23.1
Kardjali	1758	610	1148	11.6	9.7	13.0
Kjustendil	2561	1379	1182	19.1	15.0	28.4
Lovetch	2611	1258	1353	18.8	14.6	25.9
Montana	3101	1375	1726	21.4	14.8	33.1
Pazardgik	3899	2185	1714	14.3	12.9	16.6
Pernik	2488	1563	925	19.0	15.1	33.4
Pleven	4986	2533	2453	18.8	14.4	27.7
Plovdiv	9694	6162	3532	14.3	12.2	20.3
Razgrad	1903	807	1096	15.5	13.9	16.9
Rousse	3780	2461	1319	16.2	13.8	24.6
Silistra	1984	797	1187	16.8	15.0	18.4
Sliven	2799	1586	1213	14.3	12.2	18.3
Smoljan	1586	719	867	13.3	10.9	16.1
Sofia-capital	15486	14616	870	11.9	11.8	14.5
Sofia	4176	1997	2179	17.1	13.4	22.9
St. Zagora	5146	2952	2194	15.6	12.5	23.4
Targovishte	1937	869	1068	16.2	13.5	19.5
Haskovo	3807	2112	1695	15.7	12.0	25.2
Shoumen	2787	1569	1218	15.6	14.0	18.2
Yambol	2266	1168	1098	17.5	12.9	28.2

¹⁾ NSI data

4. Natural Growth of Population in 2012¹⁾

<i>Regions</i>	<i>Total</i>	<i>Urban</i>	<i>Rural</i>	<i>Total</i>	<i>Urban</i>	<i>Rural</i>
	Number			Per 1000 population		
Total	-40160	-14675	-25485	-5.5	-2.8	-12.8
Blagoevgrad	-852	-164	-688	-2.6	-0.8	-5.2
Bourgas	-1387	-587	-800	-3.3	-1.9	-7.7
Varna	-996	-212	-784	-2.1	-0.6	-10.1
V. Tarnovo	-2003	-493	-1510	-7.9	-2.8	-19.5
Vidin	-1574	-392	-1182	-16.0	-6.3	-33.0
Vratza	-2035	-644	-1391	-11.1	-6.0	-18.4
Gabrovo	-1357	-794	-563	-11.2	-8.1	-25.7
Dobrich	-1272	-507	-765	-6.8	-3.9	-13.2
Kardgali	-323	27	-350	-2.1	0.4	-4.0
Kjustendil	-1546	-555	-991	-11.5	-6.1	-23.8
Lovetch	-1416	-509	-907	-10.2	-5.9	-17.4
Montana	-1852	-548	-1304	-12.8	-5.9	-25.0
Pazardgik	-1236	-465	-771	-4.5	-2.8	-7.4
Pernik	-1529	-726	-803	-11.7	-7.0	-29.0
Pleven	-2690	-978	-1712	-10.1	-5.6	-19.3
Plovdiv	-3000	-979	-2021	-4.5	-2.0	-11.6
Razgrad	-761	-327	-434	-6.2	-5.6	-6.7
Rousse	-1889	-947	-942	-8.1	-5.3	-17.6
Silistra	-960	-388	-572	-8.1	-7.3	-8.9
Sliven	-450	-168	-282	-2.3	-1.3	-4.3
Smoljan	-802	-248	-554	-6.7	-3.7	-10.3
Sofia-capital	-1889	-1460	-429	-1.4	-1.2	-7.2
Sofia	-2084	-547	-1537	-8.5	-3.7	-16.2
St. Zagora	-1900	-605	-1295	-5.8	-2.6	-13.8
Targovishte	-723	-264	-459	-6.0	-4.1	-8.4
Haskovo	-1617	-475	-1142	-6.7	-2.7	-17.0
Shoumen	-1010	-480	-530	-5.7	-4.3	-7.9
Yambol	-1007	-240	-767	-7.8	-2.6	-19.7

¹⁾ NSI data

5. Infant Mortality in 2012¹⁾

<i>Regions</i>	<i>Total</i>	<i>Urban</i>	<i>Rural</i>	<i>Total</i>	<i>Urban</i>	<i>Rural</i>
	Number			Per 1000 live births		
Total	536	368	168	7.8	7.1	9.6
Blagoevgrad	7	6	1	2.3	3.2	0.9
Burgas	37	28	9	8.9	9.1	8.1
Varna	33	27	6	7.0	6.8	7.9
V. Tarnovo	15	9	6	6.5	5.4	9.7
Vidin	8	5	3	11.2	9.6	15.7
Vratza	11	5	6	7.2	5.9	8.9
Gabrovo	7	6	1	8.0	8.3	6.7
Dobrich	19	10	9	11.2	9.0	15.6
Kardjali	11	4	7	7.7	6.3	8.8
Kjustendil	8	6	2	7.9	7.3	10.5
Lovetch	13	7	6	10.9	9.3	13.5
Montana	18	14	4	14.4	16.9	9.5
Pazardgik	30	18	12	11.3	10.5	12.7
Pernik	6	6	-	6.3	7.2	-
Pleven	22	15	7	9.6	9.6	9.4
Plovdiv	54	38	16	8.1	7.3	10.6
Razgrad	15	1	14	13.1	2.1	21.1
Rousse	15	10	5	7.9	6.6	13.3
Silistra	8	4	4	7.8	9.8	6.5
Sliven	39	27	12	16.6	19.0	12.9
Smoljan	2	2	-	2.6	4.2	-
Sofia-capital	60	58	2	4.4	4.4	4.5
Sofia	10	6	4	4.8	4.1	6.2
St. Zagora	25	14	11	7.7	6.0	12.2
Targovishte	11	4	7	9.1	6.6	11.5
Haskovo	19	13	6	8.7	7.9	10.8
Shoumen	18	11	7	10.1	10.1	10.2
Yambol	15	14	1	11.9	15.1	3.0

¹⁾ NSI data

6. Registered Cases of Certain Infectious Diseases Subject to Obligatory Reporting in 2012

(per 100 000 population)

<i>Regions</i>	<i>Scarlet fever</i>	<i>Pertussis</i>	<i>Chiken pox</i>	<i>Mumps</i>	<i>Lyme disease</i>
Total	42.6	1.4	380.3	0.8	5.6
Blagoevgrad	13.1	-	160.5	-	-
Bourgas	32.8	0.5	280.1	1.0	2.2
Varna	81.0	1.1	694.4	5.1	12.0
V. Tarnovo	45.5	0.4	401.7	0.4	3.5
Vidin	84.3	-	253.8	1.0	-
Vratza	15.3	2.2	93.4	-	0.5
Gabrovo	32.3	-	311.6	-	10.8
Dobrich	32.6	0.5	261.2	0.5	31.0
Kardgali	15.8	-	48.8	-	-
Kjustendil	33.6	2.2	225.6	-	-
Lovetch	17.3	2.9	212.8	-	0.7
Montana	17.3	-	194.0	-	5.5
Pazardgik	6.2	-	106.3	-	0.4
Pernik	37.4	0.8	320.3	-	11.4
Pleven	19.2	-	310.3	1.9	12.5
Plovdiv	34.1	0.1	521.6	0.1	4.3
Razgrad	16.3	-	560.7	0.8	36.6
Rousse	39.1	0.4	815.8	-	6.9
Silistra	10.2	-	217.3	-	5.1
Sliven	104.6	-	169.9	-	-
Smoljan	23.4	-	166.4	-	0.8
Sofia-capital	73.8	5.2	520.1	1.0	1.3
Sofia	18.8	2.5	209.1	0.8	0.4
St. Zagora	50.8	0.9	533.1	-	6.4
Targovishte	71.2	-	356.2	1.7	38.6
Haskovo	25.1	0.8	340.2	0.4	2.5
Shoumen	35.7	-	353.8	-	10.0
Yambol	15.5	-	141.5	1.5	0.8

6. Registered Cases of Certain Infectious Diseases Subject to Obligatory Reporting in 2012

(per 100 000 population)

<i>Regions</i>	<i>Shigellosis</i>	<i>Infectious hepatitis</i>	<i>Meningitis and meningoencephalitis</i>	
			<i>bacterial</i>	<i>viral</i>
Total	10.6	76.5	2.0	7.6
Blagoevgrad	45.8	25.9	0.6	1.9
Bourgas	5.8	153.8	1.7	3.4
Varna	12.9	68.4	3.0	8.4
V. Tarnovo	5.1	9.0	2.0	8.6
Vidin	23.3	393.9	-	8.1
Vratza	13.1	155.6	1.1	7.1
Gabrovo	7.5	19.1	2.5	5.8
Dobrich	7.5	13.4	2.1	6.9
Kardgali	0.7	78.5	-	5.3
Kjustendil	15.7	32.9	0.7	3.7
Lovetch	7.2	52.6	2.2	4.3
Montana	1.4	214.8	-	2.1
Pazardgik	8.8	85.1	-	0.7
Pernik	1.5	143.4	-	6.1
Pleven	1.9	49.4	-	3.0
Plovdiv	3.7	69.7	3.5	25.4
Razgrad	1.6	16.3	0.8	1.6
Rousse	0.9	8.6	1.7	4.3
Silistra	44.1	11.0	-	0.8
Sliven	12.2	133.1	1.5	4.6
Smoljan	10.0	15.0	-	4.2
Sofia-capital	8.1	58.3	1.7	4.2
Sofia	3.3	253.2	1.2	7.4
St. Zagora	26.0	67.5	0.9	12.1
Targovishte	6.7	22.6	2.5	1.7
Haskovo	1.6	86.5	16.9	26.4
Shoumen	21.2	3.9	0.6	2.2
Yambol	24.0	41.8	0.8	8.5

7. Registered Cases of Active Tuberculosis in 2012

(per 100 000 population)

<i>Regions</i>	<i>New cases</i>
Total	26.6
Blagoevgrad	30.2
Bourgas	28.5
Varna	18.4
V. Tarnovo	17.7
Vidin	38.6
Vratza	46.4
Gabrovo	43.9
Dobrich	15.0
Kardgali	14.5
Kjustendil	33.6
Lovetch	26.0
Montana	36.6
Pazardjik	19.4
Pernik	29.7
Pleven	24.5
Plovdiv	22.9
Razgrad	21.2
Rousse	21.9
Silistra	22.9
Sliven	20.9
Smoljan	21.7
Sofia-capital	32.1
Sofia	29.0
St. Zagora	24.2
Targovishte	16.8
Haskovo	26.8
Shoumen	30.1
Yambol	37.1

8. Registered Cases of Malignant Neoplasms in 2012

(per 100 000 population)

<i>Regions</i>	<i>Total</i>	<i>incl. new cases</i>
Total	3703.0	432.4
Blagoevgrad	2894.3	384.9
Bourgas	3258.0	451.5
Varna	3467.4	409.7
V. Tarnovo	4218.3	443.7
Vidin	3174.3	395.9
Vratza	4079.0	436.3
Gabrovo	4608.9	384.6
Dobrich	2897.1	323.7
Kardgali	2324.9	378.5
Kjustendil	2865.0	256.9
Lovetch	3484.1	453.6
Montana	3588.1	370.8
Pazardgik	3816.8	427.1
Pernik	2977.7	357.0
Pleven	4363.6	513.7
Plovdiv	5005.7	489.5
Razgrad	3405.6	382.5
Rousse	4983.2	535.1
Silistra	3583.6	376.0
Sliven	2990.1	422.3
Smoljan	3257.1	448.1
Sofia-capital	3775.2	442.4
Sofia	2521.4	293.3
St. Zagora	3868.1	511.7
Targovishte	3269.4	385.5
Haskovo	3533.7	495.0
Shoumen	4055.8	421.3
Yambol	3212.5	503.4

9. Registered Cases of Some Venereal and Skin Infections in 2012

(per 100 000 population)

<i>Regions</i>	<i>Syphilis – new cases</i>	<i>Gonorrhoea – new cases</i>
Total	4.2	1.4
Blagoevgrad	5.0	0.9
Bourgas	11.1	-
Varna	4.9	0.6
V. Tarnovo	8.6	0.4
Vidin	-	-
Vratza	12.0	-
Gabrovo	17.4	-
Dobrich	8.0	-
Kardgali	-	-
Kjustendil	6.0	-
Lovetch	-	-
Montana	2.8	-
Pazardgik	-	1.8
Pernik	-	-
Pleven	6.0	-
Plovdiv	2.4	8.2
Razgrad	-	-
Rousse	0.9	0.9
Silistra	4.2	-
Sliven	15.3	6.6
Smoljan	-	-
Sofia-capital	1.3	-
Sofia	-	2.5
St. Zagora	5.4	0.9
Targovishte	-	-
Haskovo	4.9	2.9
Shoumen	-	-
Yambol	12.4	-

**10. Patients Under Observation of Psychiatric Facilities,
Wards and Consultations by Type of Disease
on 31.XII.2012**

<i>Regions</i>	<i>Total</i>		<i>Schizophrenia, schizotypal and delusional disorders</i>		<i>Incl.: Schizophrenia</i>	
	number	per 100000 population	number	per 100000 population	number	per 100000 population
Total	144310	1981.7	35358	485.6	27994	384.4
Blagoevgrad	502	157.0	305	95.4	299	93.5
Bourgas	23975	5798.4	3799	918.8	1970	476.5
Varna	468	98.9	317	67.0	317	67.0
V. Tarnovo	6659	2626.8	1483	585.0	1346	531.0
Vidin	50	51.3	40	41.0	40	41.0
Vratza	1885	1038.2	914	503.4	890	490.2
Gabrovo	1865	1555.1	979	816.3	979	816.3
Dobrich	1753	940.7	886	475.4	836	448.6
Kardgali	4379	2893.9	1242	820.8	1056	697.9
Kjustendil	2429	1829.2	615	463.1	614	462.4
Lovetch	3891	2825.5	759	551.2	480	348.6
Montana	2368	1648.5	669	465.7	591	411.4
Pazardgik	•	•	•	•	•	•
Pernik	5117	3929.2	1008	774.0	851	653.5
Pleven	7389	2809.3	1007	382.9	985	374.5
Plovdiv	17077	2515.7	4118	606.6	3204	472.0
Razgrad	5142	4208.8	872	713.7	793	649.1
Rousse	2864	1236.8	1138	491.5	1015	438.3
Silistra	218	186.0	187	159.6	187	159.6
Sliven	5784	2960.3	1159	593.2	1039	531.8
Smoljan	4146	3490.5	1044	879.0	908	764.5
Sofia-capital	18167	1395.7	5294	406.7	4346	333.9
Sofia	4904	2016.1	1419	583.4	1015	417.3
St. Zagora	7171	2173.9	1907	578.1	964	292.2
Targovishte	6238	5252.2	1500	1263.0	953	802.4
Haskovo	3554	1470.7	1058	437.8	757	313.3
Shoumen	1908	1067.5	877	490.7	815	456.0
Yambol	4407	3428.0	762	592.7	744	578.7

10. Patients Under Observation of Psychiatric Facilities, Wards and Consultations by Type of Disease on 31.XII.2012

(continued from previous)

<i>Regions</i>	<i>Mood [affective] disorders</i>		<i>Neurotic, stress-related and somatoform disorders</i>		<i>Mental retardation</i>	
	number	per 100000 population	number	per 100000 population	number	per 100000 population
Total	25609	351.7	13970	191.8	31375	430.9
Blagoevgrad	102	31.9	17	5.3	20	6.3
Bourgas	2583	624.7	5085	1229.8	5192	1255.7
Varna	113	23.9	16	3.4	-	-
V. Tarnovo	1762	695.1	455	179.5	1252	493.9
Vidin	9	9.2	1	1.0	-	-
Vratza	397	218.7	58	31.9	326	179.6
Gabrovo	699	582.9	155	129.2	-	-
Dobrich	237	127.2	40	21.5	275	147.6
Kardgali	675	446.1	897	592.8	857	566.4
Kjustendil	1377	1037.0	28	21.1	302	227.4
Lovetch	673	488.7	188	136.5	663	481.5
Montana	304	211.6	394	274.3	406	282.6
Pazardgik
Pernik	1046	803.2	12	9.2	1032	792.4
Pleven	1155	439.1	669	254.4	2010	764.2
Plovdiv	3026	445.8	1359	200.2	4705	693.1
Razgrad	925	757.1	603	493.6	1262	1033.0
Rousse	492	212.5	1	0.4	120	51.8
Silistra	31	26.5	-	-	-	-
Sliven	534	273.3	598	306.1	1969	1007.8
Smoljan	792	666.8	374	314.9	1009	849.5
Sofia-capital	4955	380.7	666	51.2	2812	216.0
Sofia	695	285.7	323	132.8	955	392.6
St. Zagora	1311	397.4	524	158.9	1805	547.2
Targovishte	758	638.2	717	603.7	1274	1072.7
Haskovo	323	133.7	401	165.9	1093	452.3
Shoumen	236	132.0	23	12.9	355	198.6
Yambol	399	310.4	366	284.7	1681	1307.6

11. Hospitalized Patients (discharged and deceased) in Hospitals in 2012

<i>Regions</i>	<i>Number</i>	<i>Per 100 000 population</i>
Total	2040666	27936.6
Blagoevgrad	67153	20930.6
Bourgas	94864	22902.3
Varna	116391	24565.9
V. Tarnovo	52608	20639.4
Vidin	14649	14870.7
Vratza	55576	30351.2
Gabrovo	33250	27557.2
Dobrich	28774	15368.8
Kardgali	27130	17888.2
Kjustendil	38910	29061.0
Lovetch	33575	24214.3
Montana	45289	31273.9
Pazardgik	90839	33305.8
Pernik	17540	13378.2
Pleven	80545	30401.0
Plovdiv	291015	42805.7
Razgrad	25885	21064.2
Rousse	60103	25832.8
Silistra	21392	18157.4
Sliven	50727	25874.7
Smoljan	27703	23159.8
Sofia-capital	474024	36487.3
Sofia	72948	29844.6
St. Zagora	80621	24393.7
Targovishte	33524	28096.6
Haskovo	53252	21932.0
Shoumen	28152	15709.7
Yambol	24227	18735.9

12. Primari Disability of Persons in 2012

(number)

<i>Regions</i>	<i>Persons under 16 years age</i>		<i>Persons over 16 years age</i>	
	number	per 1000 persons under 16 years age	number	per 1000 persons over 16 years age
Total	4566	4.4	62047	9.9
Blagoevgrad	130	2.7	2145	7.9
Bourgas	240	3.7	2718	7.8
Varna	267	3.7	3418	8.5
V. Tarnovo	114	3.5	2217	10.0
Vidin	74	5.8	1071	12.5
Vratza	138	5.2	2357	15.0
Gabrovo	79	5.4	1430	13.5
Dobrich	75	2.7	953	6.0
Kardgali	69	3.1	926	7.2
Kjustendil	75	4.5	1535	13.1
Lovetch	137	7.0	1602	13.5
Montana	127	6.3	1477	11.8
Pazardgik	189	4.5	2490	10.8
Pernik	61	3.8	1203	10.5
Pleven	279	7.5	2782	12.2
Plovdiv	397	4.1	6329	10.9
Razgrad	46	2.5	1143	10.9
Rousse	74	2.5	1787	8.8
Silistra	46	2.8	1421	14.0
Sliven	131	3.6	1726	10.8
Smoljan	40	2.7	921	8.8
Sofia-capital	784	4.5	10026	8.9
Sofia	178	5.0	2356	11.3
St. Zagora	366	7.5	2368	8.4
Targovishte	53	2.9	732	7.2
Haskovo	245	7.1	2189	10.5
Shoumen	77	2.9	1620	10.6
Yambol	75	3.9	1105	10.1

13. Beds in Hospitals on 31.XII.2012

<i>Regions</i>	<i>Number</i>	<i>Per 10000 population</i>
Total¹⁾	45726	62.8
Blagoevgrad	1306	40.9
Bourgas	1867	45.2
Varna	2263	47.8
V. Tarnovo	1265	49.9
Vidin	360	36.9
Vratza	1041	57.3
Gabrovo	834	69.5
Dobrich	750	40.2
Kardgali	916	60.5
Kjustendil	1001	75.4
Lovetch	1117	81.1
Montana	897	62.4
Pazardgik	2020	74.4
Pernik	509	39.1
Pleven	1647	62.6
Plovdiv	4843	71.3
Razgrad	540	44.2
Rousse	1192	51.5
Silistra	442	37.7
Sliven	992	50.8
Smoljan	604	50.9
Sofia-capital	9179	70.5
Sofia	1544	63.5
St. Zagora	2239	67.9
Targovishte	630	53.0
Haskovo	946	39.1
Shoumen	641	35.9
Yambol	436	33.9

¹⁾ Beds belonging to other administrations are included, but not allocated by regions.

14. Beds¹⁾ in Hospitals and Other Healthcare Establishments on 31.XII.2012 by Type²⁾

Regions	Total	Beds for active and intensive care	Beds for continuing care	Psychiatric beds	Other beds	incl:	
						physiotherapeutic and rehabilitation	day care
Number							
Total	44603	33641	1007	4665	5290	5178	112
Blagoevgrad	1426	992	20	110	304	304	-
Bourgas	2251	1373	60	253	565	540	25
Varna	2263	1916	2	159	186	180	6
V. Tarnovo	1566	1061	8	225	272	272	-
Vidin	360	330	-	30	-	-	-
Vratza	1271	951	164	85	71	71	-
Gabrovo	834	628	56	118	32	32	-
Dobrich	845	578	-	185	82	82	-
Kardgali	916	558	38	320	-	-	-
Kjustendil	1001	615	-	30	356	356	-
Lovetch	1117	630	-	465	22	22	-
Montana	897	677	10	43	167	167	-
Pazardjik	2020	1582	160	100	178	178	-
Pernik	509	364	75	25	45	45	-
Pleven	1647	1461	15	115	56	56	-
Plovdiv	5383	4276	57	320	730	711	19
Razgrad	540	445	10	65	20	20	-
Rousse	1504	929	-	465	110	110	-
Silistra	442	407	-	15	20	20	-
Sliven	1002	898	10	20	74	74	-
Smoljan	644	445	3	40	156	156	-
Sofia-capital	9239	7425	145	473	1196	1160	36
Sofia	1614	1213	55	70	276	276	-
St. Zagora	2458	1533	70	568	287	261	26
Targovishte	630	544	10	76	-	-	-
Haskovo	1036	876	25	80	55	55	-
Shoumen	752	536	14	180	22	22	-
Yambol	436	398	-	30	8	8	-

¹⁾ Beds belonging to other administrations are not included.

²⁾ According to statistical grouping used by Eurostat.

14. Beds¹⁾ in Hospitals and Other Healthcare Establishments on 31.XII.2012 by Type²⁾

(continued from previous)

Regions	Total	Beds for active and intensive care	Beds for continuing care	Psychiatric beds	Other beds	incl:	
						physiotherapeutic and rehabilitation	day care
Per 10 000 population							
Total	61.3	46.2	1.4	6.4	7.3	7.1	0.2
Blagoevgrad	44.6	31.0	0.6	3.5	9.5	9.5	-
Bourgas	54.4	33.2	1.4	6.1	13.7	13.1	0.6
Varna	47.8	40.5	0.0	3.4	3.9	3.8	0.1
V. Tarnovo	61.8	41.9	0.3	8.9	10.7	10.7	-
Vidin	36.9	33.8	-	3.1	-	-	-
Vratza	70.0	52.4	9.0	4.7	3.9	3.9	-
Gabrovo	69.5	52.4	4.6	9.8	2.7	2.7	-
Dobrich	45.3	31.0	-	9.9	4.4	4.4	-
Kardgali	60.5	36.9	2.5	21.1	-	-	-
Kjustendil	75.4	46.3	-	2.3	26.8	26.8	-
Lovetch	81.1	45.7	-	33.8	1.6	1.6	-
Montana	62.4	47.1	0.7	3.0	11.6	11.6	-
Pazardgik	74.4	58.2	5.9	3.7	6.6	6.6	-
Pernik	39.1	28.0	5.7	1.9	3.5	3.5	-
Pleven	62.6	55.5	0.6	4.4	2.1	2.1	-
Plovdiv	79.3	63.0	0.8	4.7	10.8	10.5	0.3
Razgrad	44.2	36.4	0.8	5.4	1.6	1.6	-
Rousse	65.0	40.1	-	20.1	4.8	4.8	-
Silistra	37.7	34.7	-	1.3	1.7	1.7	-
Sliven	51.3	46.0	0.5	1.0	3.8	3.8	-
Smoljan	54.2	37.4	0.3	3.4	13.1	13.1	-
Sofia-capital	71.0	57.0	1.2	3.6	9.2	8.9	0.3
Sofia	66.4	49.9	2.3	2.9	11.3	11.3	-
St. Zagora	74.5	46.5	2.1	17.2	8.7	7.9	0.8
Targovishte	53.0	45.8	0.8	6.4	-	-	-
Haskovo	42.9	36.3	1.0	3.3	2.3	2.3	-
Shoumen	42.1	30.0	0.8	10.1	1.2	1.2	-
Yambol	33.9	31.0	-	2.3	0.6	0.6	-

¹⁾ Beds belonging to other administrations are not included.

²⁾ According to statistical grouping used by Eurostat.

15. Medical Personnel in Health Facilities on 31.XII.2012

Regions	Physicians	Dentists	Auxiliary medical personnel	Incl.:		
				Med.assist.	Midwives	Nurses
Number						
Total¹⁾	28643	6706	47806	2456	3291	32059
Blagoevgrad	908	264	1582	116	74	1157
Bourgas	1179	279	2172	170	124	1455
Varna	2139	479	3014	60	327	1858
V. Tarnovo	817	193	1411	119	44	1004
Vidin	343	99	525	82	40	310
Vratza	676	119	1257	102	79	882
Gabrovo	487	102	867	72	38	574
Dobrich	525	121	952	63	68	623
Kardgali	394	117	904	80	72	620
Kjustendil	473	113	757	62	55	510
Lovetch	576	113	871	80	53	595
Montana	477	88	811	115	54	483
Pazardgik	855	227	1327	82	106	874
Pernik	355	117	492	24	32	321
Pleven	1316	155	2098	93	179	1395
Plovdiv	3126	975	4797	62	276	3208
Razgrad	316	63	623	65	30	396
Rousse	751	182	1423	133	107	895
Silistra	314	65	651	62	55	422
Sliven	604	136	995	83	51	657
Smoljan	335	110	692	69	45	452
Sofia-capital	5833	1685	9855	71	812	6625
Sofia	963	127	1510	86	104	1033
St. Zagora	1398	282	2360	104	161	1635
Targovishte	362	62	728	48	46	487
Haskovo	722	199	1271	146	118	805
Shoumen	543	101	1031	88	69	696
Yambol	394	97	736	74	38	491

¹⁾ Personnel belonging to other administrations are included, but not allocated by regions.

15. Medical Personnel in Health Facilities on 31.XII.2012

(continued from previous)

Regions	Physicians	Dentists	Auxiliary medical personnel	Incl.:		
				Med.assist.	Midwives	Nurses
Per 10000 population						
Total¹⁾	39.3	9.2	65.6	3.4	4.5	44.0
Blagoevgrad	28.4	8.3	49.5	3.6	2.3	36.2
Bourgas	28.5	6.7	52.5	4.1	3.0	35.2
Varna	45.2	10.1	63.7	1.3	6.9	39.3
V. Tarnovo	32.2	7.6	55.7	4.7	1.7	39.6
Vidin	35.2	10.2	53.8	8.4	4.1	31.8
Vratza	37.2	6.6	69.2	5.6	4.4	48.6
Gabrovo	40.6	8.5	72.3	6.0	3.2	47.9
Dobrich	28.2	6.5	51.1	3.4	3.6	33.4
Kardgali	26.0	7.7	59.7	5.3	4.8	41.0
Kjustendil	35.6	8.5	57.0	4.7	4.1	38.4
Lovetch	41.8	8.2	63.2	5.8	3.8	43.2
Montana	33.2	6.1	56.5	8.0	3.8	33.6
Pazardgik	31.5	8.4	48.8	3.0	3.9	32.2
Pernik	27.3	9.0	37.8	1.8	2.5	24.6
Pleven	50.0	5.9	79.8	3.5	6.8	53.0
Plovdiv	46.1	14.4	70.7	0.9	4.1	47.3
Razgrad	25.9	5.2	51.0	5.3	2.5	32.4
Rousse	32.4	7.9	61.5	5.7	4.6	38.7
Silistra	26.8	5.5	55.5	5.3	4.7	36.0
Sliven	30.9	7.0	50.9	4.2	2.6	33.6
Smoljan	28.2	9.3	58.3	5.8	3.8	38.1
Sofia-capital	44.8	12.9	75.7	0.5	6.2	50.9
Sofia	39.6	5.2	62.1	3.5	4.3	42.5
St. Zagora	42.4	8.5	71.5	3.2	4.9	49.6
Targovishte	30.5	5.2	61.3	4.0	3.9	41.0
Haskovo	29.9	8.2	52.6	6.0	4.9	33.3
Shoumen	30.4	5.7	57.7	4.9	3.9	38.9
Yambol	30.6	7.5	57.2	5.8	3.0	38.2

¹⁾ Personnel belonging to other administrations are included, but not allocated by regions.

16. Persons Served¹⁾ by the Centers for Urgent Medical Care and Urgent Wards in 2012

(number)

<i>Regions</i>	<i>Total</i>	<i>Centers for urgent medical care</i>		<i>Urgent wards</i>
		<i>Total</i>	<i>incl.: at calls performed</i>	
Total	2466151	1304527	721534	1119269
Blagoevgrad	86705	68341	25654	18364
Bourgas	114261	69932	40308	44329
Varna	142342	60336	43273	82006
V. Tarnovo	80644	58611	22649	22033
Vidin	48607	19911	11064	28696
Vratza	58292	34070	18015	24222
Gabrovo	38569	24940	12520	13629
Dobrich	81567	35296	16880	46271
Kardgali	72752	45285	14582	27467
Kjustendil	60939	46501	23871	14438
Lovetch	53194	42759	16237	10435
Montana	51087	31887	13959	19200
Pazardgik	72915	50233	28657	22682
Pernik	64480	35877	23847	28603
Pleven	78225	50545	24722	27680
Plovdiv	238729	65856	49764	172873
Razgrad	38950	20998	9828	17952
Rousse	48748	31088	21300	17660
Silistra	39799	25606	9891	14193
Sliven	42653	25767	17989	16886
Smoljan	36140	23787	20921	12353
Sofia-capital	468801	124983	120724	301463
Sofia	120160	91577	23310	28583
St. Zagora	77997	54398	30288	23599
Targovishte	34689	15159	7260	19530
Haskovo	99870	77261	30434	22609
Shoumen	61614	38333	19923	23281
Yambol	53422	35190	23664	18232

¹⁾ excl. ambulance transportation

17. Childbirth care at inpatient healthcare facilities during 2012

Regions	Women in childbirth served	Newborns live births			
		number	per 100 live births	incl. premature	
				number	per 100 deaths
Total	63714	220	0.3	167	75.9
Blagoevgrad	2319	-	-	-	-
Burgas	3345	19	0.6	17	89.5
Varna	4894	24	0.5	19	79.2
V. Tarnovo	1317	2	0.2	2	100.0
Vidin	587	4	0.7	1	25.0
Vratza	1221	2	0.2	2	100.0
Gabrovo	719	2	0.3	2	100.0
Dobrich	1379	3	0.2	1	33.3
Kardgali	1122	5	0.4	4	80.0
Kjustendil	1067	1	0.1	-	-
Lovetch	1076	1	0.1	-	-
Montana	1160	6	0.5	5	83.3
Pazardgik	2381	12	0.5	11	91.7
Pernik	650	3	0.5	1	33.3
Pleven	2670	15	0.6	14	93.3
Plovdiv	7035	31	0.4	22	71.0
Razgrad	579	-	-	-	-
Rousse	1871	8	0.4	3	37.5
Silistra	1210	5	0.4	4	80.0
Sliven	3083	5	0.2	5	100.0
Smoljan	658	1	0.2	1	100.0
Sofia-capital	13066	33	0.2	26	78.8
Sofia	2138	2	0.1	1	50.0
St. Zagora	3104	15	0.5	9	60.0
Targovishte	1127	3	0.3	2	66.7
Haskovo	1774	6	0.3	6	100.0
Shoumen	1417	7	0.5	5	71.4
Yambol	745	5	0.7	4	80.0

18. Surgical Patients, Discharged from Hospitals in 2012

<i>Regions</i>	<i>Discharged surgical patients</i>	<i>Surgical patients with complications (percentage)</i>	<i>Lethality (percentage)</i>
Total	545600	0.5	0.7
Blagoevgrad	15618	0.2	0.8
Burgas	19098	0.5	0.5
Varna	35006	0.2	0.7
V. Tarnovo	9264	0.9	1.5
Vidin	3045	0.2	1.4
Vratza	13014	0.5	0.7
Gabrovo	8672	0.5	0.9
Dobrich	6092	0.3	0.9
Kardgali	6345	0.1	0.5
Kjustendil	6576	1.0	0.9
Lovetch	7888	0.3	0.6
Montana	9649	0.8	0.9
Pazardgik	21808	0.0	0.4
Pernik	3540	0.1	1.0
Pleven	21781	0.1	0.4
Plovdiv	82351	0.3	0.4
Razgrad	5653	-	0.5
Rousse	15741	3.1	1.0
Silistra	5434	0.6	0.7
Sliven	13171	0.1	0.7
Smoljan	5043	0.3	0.4
Sofia-capital	155726	0.4	0.7
Sofia	18532	1.1	1.0
St. Zagora	20435	0.7	0.8
Targovishte	9020	0.8	0.4
Haskovo	12684	0.0	0.4
Shoumen	8464	0.3	0.5
Yambol	5950	0.6	0.6

VIII. INTERNATIONAL REVIEW

1. Birth Rate, Death Rate and Natural Growth

(per 1000 population)

Countries	Year	Birth rate	Death rate	Natural growth	Countries	Year	Birth rate	Death rate	Natural growth
Austria	1980	12.1	12.3	-0.2	Poland	1980	19.6	9.8	9.7
	1990	11.7	10.7	1.0		1990	14.4	10.2	4.2
	2000	9.7	9.5	0.2		2000	9.9	9.6	0.3
	2008	9.3	9.0	0.3		2008	10.9	10.0	0.9
	2009	9.1	9.3	-0.1		2009	11.0	10.1	0.9
	2010	9.4	9.2	0.2		2010	10.7	9.8	0.9
	2011	9.3	9.1	0.2		2011	10.1
Bulgaria	1980	14.5	11.1	3.4	Germany	1980
	1990	11.7	12.1	-0.4		1990	11.4	11.6	-0.2
	2000	9.0	14.1	-5.1		2000	9.3	10.2	-0.9
	2008	10.2	14.5	-4.3		2008	8.3	10.3	-2.0
	2009	10.7	14.3	-3.6		2009	8.1	10.4	-2.3
	2010	10.0	14.6	-4.6		2010	8.3	10.5	-2.2
United Kingdom	2011	9.6	14.7	-5.1	Switzerland	2011	...	10.4	...
	1980	13.4	11.7	1.6		1980	11.7	9.4	2.3
	1990	14.0	11.2	2.7		1990	12.5	9.5	3.0
	2000	11.4	10.3	1.2		2000	10.9	8.7	2.2
	2008	12.9	9.4	3.5		2008	10.0	8.0	2.0
	2009	12.8	9.1	3.7		2009	10.1	8.1	2.1
	2010	13.0	9.0	4.0		2010	10.3	8.0	2.3
Netherlands	2011	Roumania	2011
	1980	12.8	8.1	4.7		1980	18.0	10.4	7.5
	1990	13.2	8.6	4.6		1990	13.6	10.7	2.9
	2000	13.0	8.8	4.2		2000	10.5	11.4	-1.0
	2008	11.2	8.2	3.0		2008	10.3	11.8	-1.5
	2009	11.2	8.1	3.1		2009	10.4	12.0	-1.6
	2010	11.1	8.2	2.9		2010	9.9	12.1	-2.2
Norway	2011	...	8.1	...	European union	2011
	1980	12.5	10.1	2.4		1980	14.0	10.5	3.5
	1990	14.4	10.9	3.5		1990	12.4	10.4	2.0
	2000	13.3	9.9	3.4		2000	10.6	10.0	0.6
	2008	12.7	8.8	3.9		2008	10.9	9.7	1.1
	2009	12.8	8.6	4.2		2009	10.7	9.7	1.0
	2010	12.6	8.5	4.1		2010	10.7	9.7	1.0
2011	12.2	8.3	3.8	2011	10.6	9.7	0.9		

2. Infant Mortality Rate

(per 1000 live births)

<i>Countries</i>	1980	1985	1990	1995	2000	2007	2008	2009	2010	2011
Austria	14.3	11.2	7.8	5.4	4.8	3.7	3.7	3.8	3.9	3.6
Bulgaria	20.2	15.2	14.8	14.8	13.3	9.2	8.6	9.0	9.4	8.5
United Kingdom	12.1	9.4	7.9	6.2	5.6	4.8	4.7	4.7	4.3	...
Germany	7.1	5.3	4.4	3.9	3.5	3.5	3.4	...
Greece	17.9	14.1	9.7	8.2	5.4	3.6	2.7	3.2	3.8	...
Spain	12.4	8.9	7.6	5.5	4.4	3.5	3.4	3.3	3.2	...
Italy	14.2	10.3	8.0	6.2	4.5	3.5	3.5	3.6
Norway	8.1	8.5	7.0	4.1	3.8	3.2	2.7	3.2	2.6	2.3
Poland	21.2	18.4	16.0	13.6	8.1	6.0	5.6	5.6	5.0	...
Portugal	24.3	17.8	11.0	7.5	5.5	3.5	3.3	3.7	2.6	3.1
Roumania	29.3	25.6	26.9	21.2	18.6	12.0	11.0	10.1	9.8	...
Russia	22.0	20.8	17.6	18.2	15.2	9.2	8.4	8.1	7.6	...
Hungary	23.2	20.4	14.8	10.7	9.2	5.9	5.6	5.1	5.3	4.9
France	10.0	8.3	7.3	4.9	4.4	3.5	3.5	3.5
Czech republic	16.9	12.5	10.8	7.7	4.1	3.1	2.8	2.9	2.7	2.7
Switzerland	9.1	6.9	6.8	5.1	4.9	3.9	4.0	4.3	3.8	...
European union	14.3	11.7	9.9	7.5	5.9	4.5	4.3	4.2	4.1	4.1

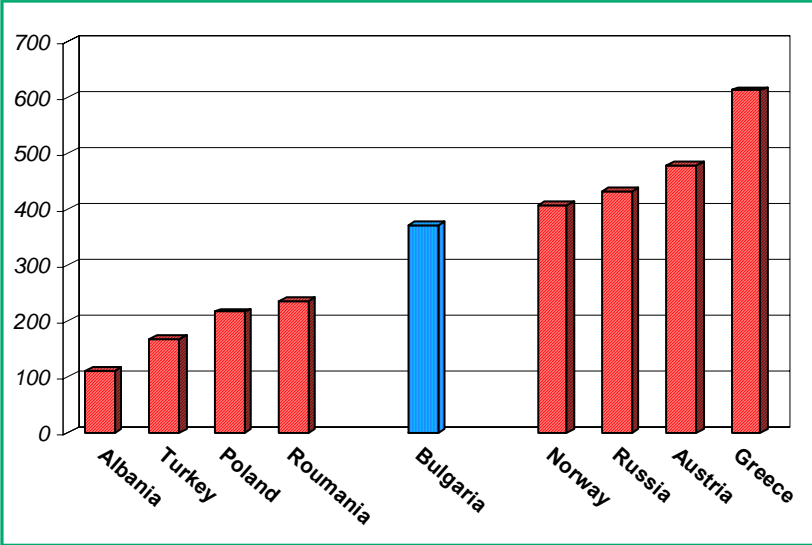
3. Medical Personnel and Hospital Beds

(per 100 000 population)

<i>Countries</i>	<i>Year</i>	<i>Physicians</i>	<i>Year</i>	<i>Dentists</i>	<i>Year</i>	<i>Beds</i>
Albania	2011	111.3	2006	32.9	2011	242.8
Austria	2010	478.1	2011	56.3	2010	763.1
Belgium	2010	297.0	2010	71.7	2011	653.0
Bulgaria	2011	386.6	2011	90.6	2011	602.7
Czech republic	2010	358.1	2010	69.1	2010	701.2
Denmark	2009	348.4	2009	77.9	2010	349.6
Finland	2008	272.1	2009	74.4	2010	584.7
France	2011	315.0	2011	66.3	2010	663.7
Germany	2010	373.2	2010	79.5	2010	825.0
Greece	2010	612.6	2010	129.7	2009	484.9
Hungary	2010	286.9	2010	52.6	2010	718.2
Ireland	2011	323.8	2011	58.3	2010	315.0
Israel	2011	302.6	2011	85.0	2011	327.7
Italy	2009	367.5	2010	56.3	2010	352.5
Luxembourg	2011	276.7	2011	80.3	2010	536.7
Netherlands	2009	292.3	2009	49.8	2009	465.7
Norway	2010	406.8	2010	87.7	2010	329.6
Poland	2010	216.0	2010	32.6	2010	652.9
Portugal	2010	384.7	2010	75.8	2010	336.7
Roumania	2010	236.9	2010	60.5	2010	628.7
Russia	2006	431.0	2006	32.0	2006	965.9
Spain	2011	396.8	2010	60.4	2010	315.7
Sweden	2009	380.2	2009	80.2	2010	272.6
Switzerland	2010	380.9	2010	52.5	2010	496.5
Turkey	2010	167.5	2010	29.1	2010	249.7
United Kingdom	2011	276.4	2011	53.0	2010	295.6
European Union	2010	332.7	2010	65.9	2010	545.5

Number of Physicians

(per 100 000 population)



Number of Hospital Beds

(per 100 000 population)

