



MINISTRY OF HEALTH



NATIONAL CENTER
OF PUBLIC HEALTH AND ANALYSES

Annual Bulgaria

PUBLIC HEALTH STATISTICS

2012

POPULATION AND VITAL STATISTICS
MORBIDITY AND MORTALITY BY CAUSES
HEALTH FACILITIES
MEDICAL PERSONNEL
ACTIVITIES OF THE HEALTH FACILITIES
ECONOMICAL INDICATORS
REVIEW BY REGIONS
INTERNATIONAL REVIEW

Sofia, 2012

PUBLIC HEALTH STATISTICS, Bulgaria 2012, Annual

ISSN 1310–2931

Editors *Christian Griva, Krasimira Dikova*

Publish *National center of public health and analysis*

Sofia, 2012

Print *National center of public health and analysis*

Circulatuion 60

CONTENTS

I. POPULATION AND VITAL STATISTICS

1. Population on 31.XII.	7
2. Population by age on 31.XII.2011	8
3. Age structure of the population	9
4. Live births, deaths and natural growth	10
5. Births and abortions	12
6. Age specific fertility rates	12
7. Infant mortality	13
8. Perinatal, neonatal and postneonatal infant mortality	13
9. Stillbirths and infant deaths under 1 year	16
10. Mortality by age groups	17
11. Life expectancy in Republic of Bulgaria	17

II. MORBIDITY AND MORTALITY BY CAUSES

1. Registered cases of certain infectious diseases subject to obligatory reporting	18
2. Registered cases of active tuberculosis	19
3. Registered cases of malignant neoplasms	20
4. Registered cases of malignant neoplasms by localization	22
5. Registered cases of some venereal and skin infections	23
6. Patients under observation of psychiatric facilities, wards and consultations 31.12. by type of disease	24
7. Hospitalized patients (discharged and deceased) in hospitals by age	25
8. Hospitalized patients (discharged and deceased) in hospitals by classes of ICD-10 in 2011	26
9. Hospitalized patients (discharged and deceased) in hospitals 0-17 years of age by classes of ICD-10 in 2011	27
10. Hospitalized patients (discharged and deceased) in hospitals 18-64 years of age by classes of ICD-10 in 2011	28
11. Hospitalized patients (discharged and deceased) in hospitals over 65 years of age by classes of ICD-10 in 2011	29
12. Primary disability of persons over 16 years of age	30
13. Primary disability of persons under 16 years of age	31

14. Primary disability of persons over 16 years of age by class of disease and loss of capacity to work in 2011	32
15. Primary disability of persons under 16 years of age by class of disease and loss of capacity in 2011	33
16. Mortality by causes in 2011	34
III. HEALTH FACILITIES	
1. Health facilities and hospital beds in 2011	36
2. Beds in hospitals on 31.XII.2011 by type	38
3. Beds in hospitals and other healthcare establishments on 31.XII.2011 by type	40
IV. MEDICAL PERSONNEL	
1. Medical personnel.....	41
2. Physicians by speciality	43
V. ACTIVITIES OF THE HEALTH FACILITIES	
1. Activities of the inpatient wards of the hospital health care facilities in 2011	44
2. Utilization, turnover and average length of stay in health care facilities in 2011 by type of beds	46
3. Women in childbirth served at inpatient healthcare facilities	48
4. Made abortions in health facilities during 2011 by age group and type of abortion	49
5. Medical abortions in health facilities	50
6. Persons served by calls attended and ambulatory examinations in need of urgent medical care in the centers for urgent medical care	50
7. Number and type of surgeries of patients, discharged from hospitals in 2011	51
8. Number and type of surgeries of patients, discharged from hospitals in 2011 by type of healthcare facility	52
VI. ECONOMICAL INDICATORS OF THE HEALTH FACILITIES FOR 2011	54

VII. REVIEW BY REGIONS

1. Population on 31.XII.2011	55
2. Live births in 2011	57
3. Deaths in 2011	58
4. Natural growth of population in 2011	59
5. Infant mortality in 2011	60
6. Registered cases of certain infectious diseases subject to obligatory reporting in 2011	61
7. Registered cases of active tuberculosis in 2011	63
8. Registered cases of malignant neoplasms in 2011	64
9. Registered cases of some venereal and skin infections in 2011	65
10. Patients under observation of psychiatric facilities, wards and consultations by type of disease on 31.12.2011	66
11. Hospitalized patients (discharged and deceased) in Hospitals in 2011	68
12. Primary disability of persons in 2011	69
13. Beds in hospitals on 31.XII.2011	70
14. Beds in hospitals and other healthcare establishments on 31.XII.2011 by type	71
15. Medical personnel in health facilities on 31.XII.2011	73
16. Persons served by the centers for urgent medical care in 2011	75
17. Childbirth care at inpatient healthcare facilities during 2011	76
18. Surgical patients, discharged from hospitals in 2011	77

VIII. INTERNATIONAL REVIEW

1. Birth rate, death rate and natural growth	78
2. Infant mortality rate	79
3. Medical personnel and hospital beds	80

Main Health-demographic Indicators for 2011

Population on 31.12.2011	7 327 224
Age structure of the population:	
0-17 years of age	16.1%
18-64 years of age	65.0%
over 65 years of age	18.9%
Crude birth rate	9.6‰
Crude death rate	14.7‰
Infant mortality	8.5‰
Perinatal mortality	11.7‰
Neonatal mortality	5.3‰
Post neonatal mortality	3.2‰
Life expectancy at birth (<i>years</i>)	73.83
male	70.37
female	77.37
New cases of active tuberculosis	27.9‰‰‰
New cases of malignant neoplasms	448.7‰‰‰
Hospitalized patient	26688.3‰‰‰
0-17 years of age	25079.2‰‰‰
18-64 years of age	21768.9‰‰‰
over 65 years of age	45279.6‰‰‰
Primary disability of persons over 16 years of age	10.2‰
Primary disability of persons under 16 years of age	4.6‰
Hospitals (<i>number</i>)	315
Beds in hospitals (<i>number</i>)	44 811
Physicians (<i>number</i>)	28 411
Auxiliary medical personnel (<i>number</i>)	47 427
Persons served in need of urgent medical care	2 496 265
Surgeries of patients discharged from hospitals	520 466

I. POPULATION AND VITAL STATISTICS

1. Population on 31.XII.¹⁾

<i>Year</i>	<i>Total</i>	<i>Male</i>	<i>Female</i>	<i>Urban</i>	<i>Rural</i>
Number (thous.)					
1946	7029.3	3516.7	3512.6	1735.2	5294.1
1956	7613.7	3799.4	3814.3	2556.1	5057.6
1960	7905.5	3946.9	3958.6	3005.0	4900.5
1970	8514.9	4256.6	4258.3	4509.8	4005.1
1980	8876.6	4421.7	4454.9	5546.0	3330.6
1990	8669.3	4270.0	4399.3	5817.9	2851.4
2000	8149.5	3967.4	4182.1	5576.9	2572.6
2005	7718.8	3743.4	3975.4	5416.6	2302.2
2008	7606.6	3681.3	3925.3	5407.1	2199.5
2009	7563.7	3659.3	3904.4	5401.2	2162.5
2010	7504.9	3629.8	3875.1	5375.1	2129.8
2011	7327.2	3566.8	3760.4	5324.9	2002.3
Percentage (%)					
1946	100.0	50.0	50.0	24.7	75.3
1956	100.0	49.9	50.1	33.6	66.4
1960	100.0	49.9	50.1	38.0	62.0
1970	100.0	50.0	50.0	53.0	47.0
1980	100.0	49.8	50.2	62.5	37.5
1990	100.0	49.3	50.7	67.1	32.9
2000	100.0	48.7	51.3	68.4	31.6
2005	100.0	48.5	51.5	70.2	29.8
2008	100.0	48.4	51.6	71.1	28.9
2009	100.0	48.4	51.6	71.4	28.6
2010	100.0	48.4	51.6	71.6	28.4
2011	100.0	48.7	51.3	72.7	27.3

¹⁾ NSI data

2. Population by Age on 31.XII.2011¹⁾

<i>Age</i>	<i>Total</i>	<i>Male</i>	<i>Female</i>	<i>Urban</i>	<i>Rural</i>
Total	7327224	3566767	3760457	5324900	2002324
0	66214	34165	32049	50023	16191
1–4	279803	143697	136106	207116	72687
5–9	321683	165639	156044	232921	88762
10–14	312256	160513	151743	225039	87217
15–19	358043	184231	173812	258896	99147
20–24	476084	244907	231177	369447	106637
25–29	490354	254638	235716	381237	109117
30–34	520808	270154	250654	407851	112957
35–39	550714	283890	266824	430939	119775
40–44	522726	268802	253924	398281	124445
45–49	483885	245517	238368	361325	122560
50–54	509722	253526	256196	378462	131260
55–59	524881	252511	272370	384549	140332
60–64	528972	243210	285762	373298	155674
65–69	433485	190684	242801	284334	149151
70–74	340532	141493	199039	209805	130727
75–79	303625	119612	184013	183014	120611
80–84	189698	70854	118844	118013	71685
85–89	90471	31229	59242	55963	34508
90–94	20352	6612	13740	12555	7797
95–99	2617	772	1845	1637	980
100+	299	111	188	195	104

¹⁾ NSI data

3. Age Structure of the Population

(percentage)

Year	Total	Age groups		
		0–17	18–64	65+
Total				
1970	100.0	27.5	62.8	9.7
1995	100.0	22.0	62.8	15.2
2000	100.0	19.5	64.1	16.4
2005	100.0	17.5	65.3	17.2
2009	100.0	16.7	65.8	17.5
2010	100.0	16.7	65.6	17.7
2011	100.0	16.1	65.0	18.9
Urban				
1970	100.0	28.1	65.3	6.6
1995	100.0	22.9	65.6	11.5
2000	100.0	20.0	67.7	12.3
2005	100.0	17.7	68.7	13.6
2009	100.0	16.8	68.9	14.3
2010	100.0	16.9	68.5	14.6
2011	100.0	16.1	67.6	16.3
Rural				
1970	100.0	26.8	60.0	13.2
1995	100.0	20.1	57.0	22.9
2000	100.0	18.6	56.3	25.1
2005	100.0	17.0	57.4	25.6
2009	100.0	16.1	58.2	25.7
2010	100.0	16.1	58.2	25.7
2011	100.0	16.1	58.2	25.7

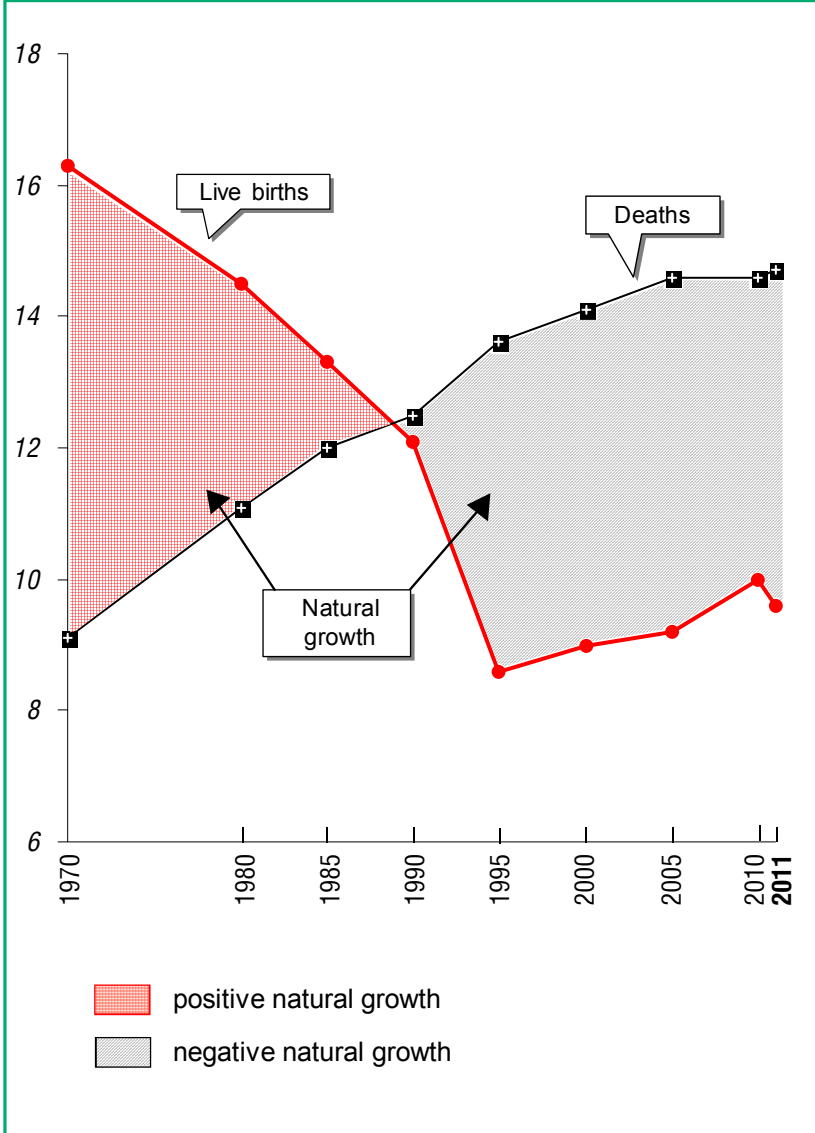
4. Live Births, Deaths and Natural Growth¹⁾

Year	Live births	Deaths	Natural growth	Live births	Deaths	Natural growth
	Number			Per 1000 population		
Total						
1970	138745	77095	61650	16.3	9.1	7.2
1980	128190	97950	30240	14.5	11.1	3.4
1990	105180	108608	-3428	12.1	12.5	-0.4
1995	71967	114670	-42703	8.6	13.6	-5.0
2000	73679	115087	-41408	9.0	14.1	-5.1
2005	71075	113374	-42299	9.2	14.6	-5.4
2009	80956	108068	-27112	10.7	14.2	-3.5
2010	75513	110165	-34652	10.0	14.6	-4.6
2011	70846	108258	-37412	9.6	14.7	-5.1
Urban						
1970	79809	30957	48852	18.0	7.0	11.0
1980	86664	45153	41511	15.7	8.2	7.5
1990	73940	55225	18715	12.6	9.4	3.2
1995	50405	60767	-10362	8.8	10.7	-1.9
2000	52789	64184	-11395	9.5	11.5	-2.0
2005	52280	65309	-13029	9.6	12.0	-2.4
2009	60664	64335	-3671	11.2	11.9	-0.7
2010	57077	65759	-8682	10.6	12.2	-1.6
2011	53396	65182	-11786	10.0	12.2	-2.2
Rural						
1970	58936	46138	12798	14.6	11.4	3.2
1980	41526	52797	-11271	12.4	15.7	-3.3
1990	31240	53383	-22143	10.9	18.6	-7.7
1995	21562	53903	-32341	8.0	19.9	-11.9
2000	20890	50903	-30013	8.1	19.6	-11.5
2005	18795	48065	-29270	8.1	20.8	-12.7
2009	20292	43733	-23441	9.3	20.1	-10.8
2010	18436	44406	-25970	8.6	20.7	-12.1
2011	17450	43076	-25626	8.7	21.4	-12.7

¹⁾ NSI data

Live Births, Deaths and Natural Growth

(per 1000 population)



5. Births and Abortions

Year	<i>Births</i>	<i>Abortions</i>	<i>Births</i>	<i>Abortions</i>
	Number		Per 1000 women at 15–49	
1980	129176	156056	60.4	72.9
1990	105821	144644	49.2	67.2
1995	72425	97092	35.2	47.2
2000	74234	61378	37.0	30.6
2005	71640	41795	38.2	22.3
2008	78283	36593	42.9	20.0
2009	81572	33733	45.2	18.7
2010	76105	31548	42.9	17.8
2011	71402	31716	43.0	19.1

6. Age Specific Fertility Rates

(per 1000 women at 15–49)

Age	1980	1990	1995	2000	2005	2009	2010	2011
Total	59.8	48.9	35.0	36.7	37.9	44.9	42.6	42.6
15–19	80.3	68.3	53.5	47.1	40.1	48.9	43.1	43.5
20–24	192.8	158.4	100.6	89.7	78.6	80.3	73.1	70.4
25–29	92.8	78.3	61.8	72.9	80.9	91.6	86.8	90.1
30–34	32.2	28.8	22.4	32.3	47.3	64.8	65.1	66.8
35–39	9.7	9.4	7.5	9.5	14.5	24.5	26.1	26.9
40–44	2.1	1.8	1.5	1.9	2.1	3.8	4.1	4.5
45–49	0.1	0.1	0.1	0.1	0.1	0.3	0.3	0.3

7. Infant Mortality¹⁾

<i>Year</i>	<i>Total</i>	<i>Urban</i>	<i>Rural</i>
Number			
1970	3788	1811	1977
1980	2594	1560	1034
1990	1554	1020	534
1995	1065	705	360
2000	981	657	324
2005	739	464	275
2008	668	444	224
2009	729	468	261
2010	708	461	247
2011	601	412	189
Per 1000 live births			
1970	27.3	22.7	33.5
1980	20.2	18.0	24.9
1990	14.8	13.8	17.1
1995	14.8	14.0	16.7
2000	13.3	12.4	15.5
2005	10.4	8.9	14.6
2008	8.6	7.6	11.6
2009	9.0	7.7	12.9
2010	9.4	8.1	13.4
2011	8.5	7.7	10.8

8. Perinatal, Neonatal and Postneonatal Infant Mortality

(per 1000 live births)

	<i>1980</i>	<i>1990</i>	<i>1995</i>	<i>2000</i>	<i>2005</i>	<i>2009</i>	<i>2010</i>	<i>2011</i>
Perinatal ²⁾	15.0	11.1	11.8	12.2	12.0	11.3	11.4	11.7
Neonatal	10.4	7.7	7.8	7.5	6.2	5.4	5.2	5.3
Postneonatal ³⁾	10.0	7.1	7.1	5.9	4.2	3.6	4.2	3.2

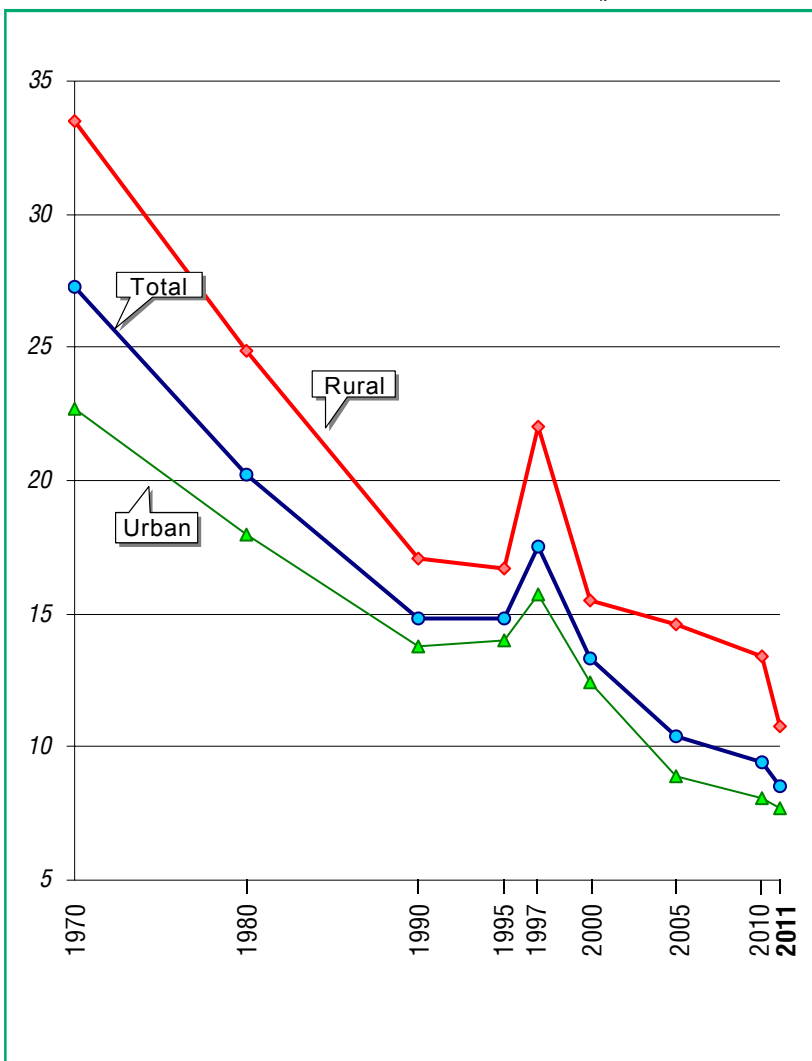
¹⁾ NSI data

²⁾ Per 1000 births.

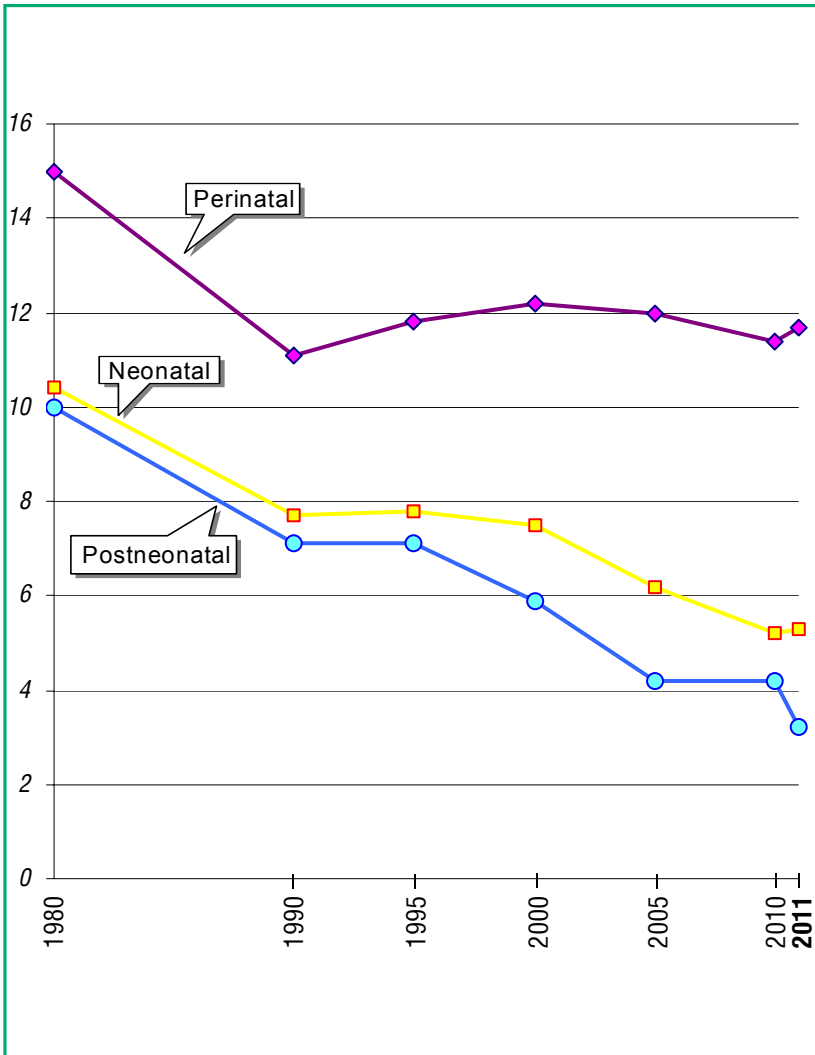
³⁾ Per 1000 live births, excl. deaths before 28th day.

Infant Mortality

(per 1000 live births)



Perinatal, Neonatal and Postneonatal Infant Mortality



9. Stillbirths and Infant Deaths Under 1 Year¹⁾

(number)

Year	Stillbirths	Infant deaths under 1 year			
		Total	Incl:		
			0-6 days	7-27 days	28+ days
Total					
1970	1382	3788	1259	569	1960
1980	986	2594	957	372	1265
1990	641	1554	533	278	743
1995	458	1065	397	162	506
2000	555	981	348	201	432
2005	565	739	296	148	295
2009	616	729	306	130	293
2010	592	708	274	120	314
2011	556	601	279	100	222
Urban					
1970	792	1811	773	264	774
1980	606	1560	640	245	675
1990	449	1020	357	208	455
1995	299	705	282	107	316
2000	365	657	237	141	279
2005	363	464	195	91	178
2009	424	468	189	90	189
2010	409	461	183	80	198
2011	401	412	193	70	149
Rural					
1970	590	1977	486	305	1186
1980	380	1034	317	127	590
1990	192	534	176	70	288
1995	159	360	115	55	190
2000	190	324	111	60	153
2005	202	275	101	57	117
2009	192	261	117	40	104
2010	183	247	91	40	116
2011	155	189	86	30	73

¹⁾ NSI data

10. Mortality by Age Groups

(per 1000 population of the same age group)

Year	Total	Age groups								
		under 1 year ¹⁾	1-9	10-19	20-29	30-39	40-49	50-59	60-69	70+
1970	9.1	27.3	0.8	0.6	1.0	1.5	3.2	8.1	22.4	84.2
1980	11.1	20.2	0.7	0.6	1.0	1.6	3.6	9.1	24.3	88.1
1990	12.5	14.8	0.6	0.6	1.1	1.8	4.3	10.0	23.5	93.4
2000	14.1	13.3	0.5	0.4	0.8	1.7	4.3	10.1	23.8	84.5
2005	14.6	10.4	0.4	0.4	0.8	1.5	4.2	10.4	22.4	80.2
2009	14.2	9.0	0.3	0.4	0.8	1.4	3.7	9.7	20.5	77.1
2010	14.6	9.4	0.3	0.4	0.7	1.3	3.7	9.4	20.1	80.2
2011	14.7	8.5	0.3	0.4	0.7	1.3	3.6	9.3	19.3	77.4

¹⁾ Per 1000 live births

11. Life Expectancy in Republic of Bulgaria¹⁾

(in years)

Periods	Total	Male	Female
1935-1939	51.75	50.98	52.56
1960-1963	69.59	67.82	71.35
1974-1976	71.31	68.68	73.91
1978-1980	71.14	68.35	73.55
1984-1986	71.19	68.17	74.44
1989-1991	71.22	68.02	74.66
1993-1995	70.60	67.10	74.90
1995-1998	70.50	67.10	74.30
1997-1999	71.00	67.60	74.60
1998-2000	71.70	68.15	75.34
1999-2001	71.80	68.50	75.20
2000-2002	71.87	68.54	75.37
2003-2005	72.60	69.00	76.30
2005-2007	72.70	69.20	76.30
2006-2008	73.00	69.50	76.60
2007-2009	73.43	69.90	77.08
2008-2010	73.60	70.00	77.20
2009-2011	73.83	70.37	77.37

¹⁾ NSI data

II. MORBIDITY AND MORTALITY BY CAUSES

1. Registered Cases of Certain Infectious Diseases Subject to Obligatory Reporting

(per 100000 population)

Cases	1980	1990	2000	2005	2010	2011
Diphtheria	0.0	–	–	–	–	–
Scarlet fever	145.6	85.7	64.6	65.5	34.3	35.5
Measles	121.5	1.7	0.6	0.0	292.1	2.1
Pertussis	1.7	0.3	1.3	3.1	0.7	0.6
Rubeolla	779.1	147.3	348.2	25.4	0.5	0.6
Varicella	537.2	418.6	285.8	319.1	261.8	368.9
Mumps	73.6	1.5	28.8	7.9	4.2	1.9
Meningococcal meningitis and sepsis	1.2	0.9	1.1	0.4	0.2	0.2
Poliomyelitis	–	–	–	–	–	–
Q fever	0.0	0.4	1.8	0.6	0.2	0.2
Crimean-Congo haemorrhagic fever	0.1	0.1	0.1	0.2	0.1	0.1
Lyme disease	–	–	3.6	12.6	7.9	8.1
Malaria ¹⁾	1.4	0.5	0.2	0.2	0.1	0.1
Typhoid fever	0.0	0.0	–	–	0.0	–
Shigellosis	96.9	61.9	19.8	21.2	7.9	10.9
Acute viral hepatitis	110.8	274.2	104.8	85.2	39.9	85.2
Anthrax	0.1	0.1	0.2	0.0	0.0	0.0
Leptospirosis	0.2	0.3	0.4	0.6	0.1	0.2
Tetanus	0.2	0.1	0.0	0.0	0.0	0.1
Bacterial meningitis and meningoencephalitis	•	•	•	2.8	1.9	2.1
Viral meningitis and meningoencephalitis	•	•	•	5.0	3.2	3.0

¹⁾ All registered cases are imported.

2. Registered Cases of Active Tuberculosis

(per 100000 population)

<i>Forms of disease</i>	1980	1990	1995	2000	2005	2009	2010	2011
Total	178.2	106.0	154.9	173.4	127.7	109.4	90.5	74.3
Incl. new cases	37.0	25.9	40.5	41.0	40.1	33.6	30.3	27.9
Tuberculosis of the respiratory system	115.1	80.5	123.4	144.8	106.5	95.0	79.2	65.5
Incl. new cases	25.6	19.9	33.9	35.6	35.4	30.0	26.6	24.9
Tuberculosis of the bones and joints	12.4	5.3	5.1	4.8	3.6	2.5	1.8	1.2
Incl. new cases	2.2	1.0	1.0	1.0	0.7	0.4	0.5	0.4
Tuberculosis of the nervous system ¹⁾	0.5	0.3	0.5	0.5	0.2	0.2	0.2	0.4
Incl. new cases	0.1	0.1	0.1	0.1	0.1	0.1	0.1	0.2
Other forms of tuberculosis	50.2	19.9	25.9	23.3	17.4	11.7	9.3	7.2
Incl. new cases	9.1	4.9	5.5	4.3	3.9	3.1	3.1	2.4

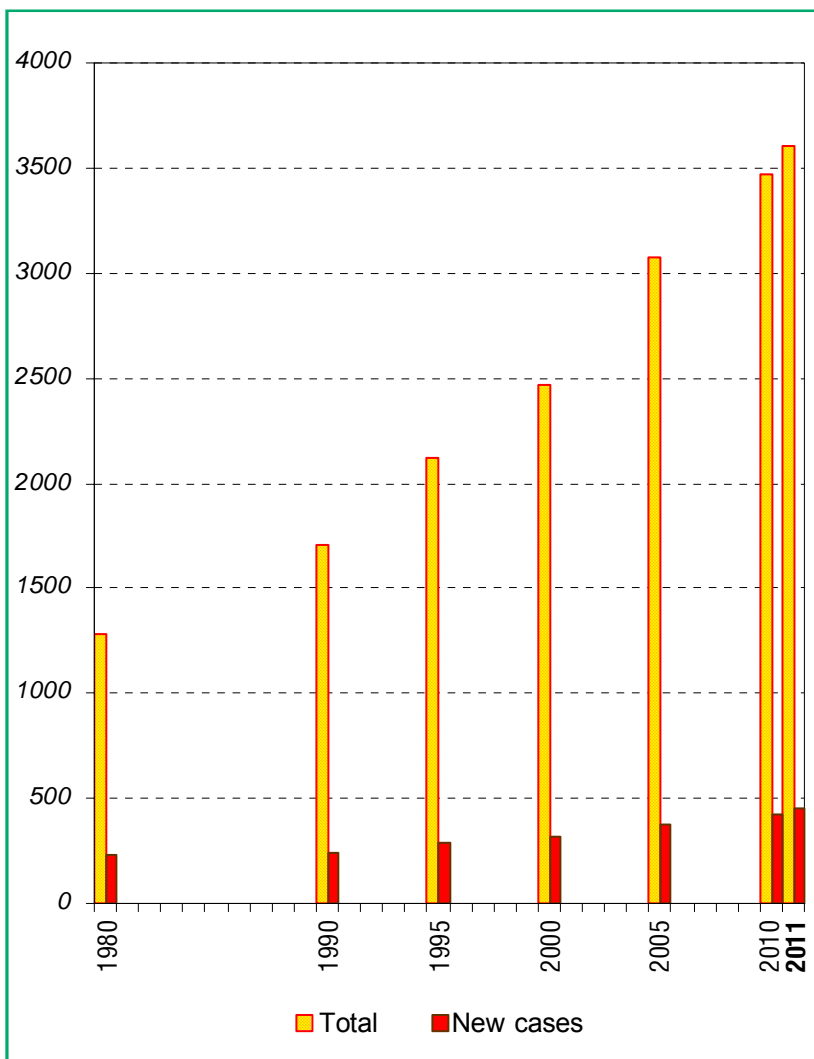
¹⁾ Till 2004 – Meningitis and CNS tuberculosis (ICD-9)

3. Registered Cases of Malignant Neoplasms

<i>Year</i>	<i>Total</i>	<i>incl. new cases</i>	<i>Total</i>	<i>incl. new cases</i>
	Number		Per 100 000 population	
1980	113336	20620	1279.0	232.7
1990	153651	22038	1762.4	252.8
1995	178179	23966	2119.6	285.1
2000	201226	26156	2462.9	320.1
2005	237607	29354	3069.9	379.3
2007	255120	31706	3330.7	413.9
2008	262059	32478	3437.6	426.0
2009	261974	33246	3453.8	438.3
2010	261382	32067	3469.2	425.6
2011	264739	32969	3602.7	448.7

Registered Cases of Malignant Neoplasms

(per 100 000 population)



4. Registered Cases of Malignant Neoplasms by Localization

(per 100000 population)

<i>Localization ICD-10</i>	<i>2010</i>		<i>2011</i>	
	<i>Total</i>	<i>Incl. new cases</i>	<i>Total</i>	<i>Incl. new cases</i>
Total	3469.2	425.6	3602.7	448.7
Lips, oral cavity and pharynx	106.6	10.6	105.0	11.3
Incl. lips	59.9	2.5	56.9	2.6
Digestive organs	519.2	99.6	542.4	104.0
Incl. stomach	73.9	18.4	74.6	19.1
colon	218.7	33.0	229.2	32.4
rectosigmoid junction, rectum, anus and anal canal	161.5	23.6	168.1	23.9
Respiratory and intrathoracic organs	211.5	54.3	213.7	56.8
Incl. trachea, bronchus and lung	137.8	45.8	138.8	48.3
Bone and articular cartilage	10.6	0.8	10.7	0.8
Melanoma and other malignant neoplasms of skin	747.5	64.4	775.0	62.2
Mesothelial and soft tissue	36.6	4.2	37.7	4.6
Malignant neoplasm of breast	622.0	48.4	646.4	51.1
Incl. female breast	1191.2 ¹⁾	92.3 ¹⁾	1246.4 ¹⁾	98.2 ¹⁾
Female genital organs	1029.4 ¹⁾	82.1 ¹⁾	1063.3 ¹⁾	82.1 ¹⁾
Incl. cervix uteri	359.6 ¹⁾	27.4 ¹⁾	371.5 ¹⁾	27.3 ¹⁾
corpus uteru	442.4 ¹⁾	31.1 ¹⁾	459.5 ¹⁾	31.3 ¹⁾
ovary	177.0 ¹⁾	18.7 ¹⁾	183.5 ¹⁾	19.5 ¹⁾
Male genital organs	379.8 ²⁾	51.8 ²⁾	419.1 ²⁾	76.6 ²⁾
Incl. prostate	275.5 ²⁾	45.0 ²⁾	311.2 ²⁾	70.6 ²⁾
Urinary tract	215.8	29.2	230.0	30.2
Incl. bladder	149.3	19.4	159.7	20.9
Eye, brain and other parts of central nervous system	42.4	7.2	44.4	8.8
Thyroid and other endocrine glands	59.5	3.8	63.1	3.8
Ill-defined, secondary and unspecified sites	43.6	17.1	42.7	17.7
Lymphoid, haematopoietic and related tissue	138.8	18.4	141.9	17.9
Independent (primary) multiple sites	–	–	–	–

¹⁾ Per 100 000 female

²⁾ Per 100 000 male

5. Registered Cases of Some Venereal and Skin Infections

(per 100 000 population)

<i>Disease</i>	1990	1995	2000	2005	2009	2010	2011
Syphilis	31.2	54.2	119.7	66.5	44.7	43.9	36.6
incl. new cases	4.4	20.2	19.4	7.7	5.9	5.7	4.8
Gonorrhoea	68.4	27.8	9.6	2.8	2.7	2.8	2.8
incl. new cases	62.3	23.7	7.3	2.3	2.5	2.4	2.7
Microsporia	35.3	36.2	32.2	23.3	33.1	31.4	39.7
incl. new cases	32.3	32.1	23.3	17.1	29.7	25.5	30.1
Trychophytia	13.3	31.3	26.7	25.3	34.5	39.7	33.6
incl. new cases	9.9	28.8	15.9	18.5	30.1	34.8	28.0

6. Patients Under Observation of Psychiatric Facilities, Wards and Consultations on 31.12. by Type of Disease

<i>Name of disease – ICD-10</i>	2010		2011	
	<i>Number</i>	<i>per 100 000 population</i>	<i>Number</i>	<i>per 100 000 population</i>
Total	155741	2075.2	151002	2060.8
Mental and behavioural disorders	145441	1938.0	141618	1932.8
Dementia	3330	44.4	2980	40.7
Delirium, not induced by alcohol and other psychoactive substances	672	9.0	632	8.6
Other mental disorders due to brain disease	4530	60.4	4253	58.0
Mental and behavioural disorders due to use of alcohol	13805	183.9	13199	180.1
Mental and behavioural disorders due to use of other psychoactive substance	901	12.0	927	12.7
Mental and behavioural disorders due to use of opioids	686	9.1	750	10.2
Schizophrenia, schizotypal and delusional disorders	35971	479.3	36347	496.1
Schizophrenia	27766	370.0	28365	387.1
Acute and transient psychotic disorders	2811	37.5	2766	37.7
Mood [affective] disorders	27492	366.3	26813	365.9
Manic episode	3356	44.7	3167	43.2
Bipolar affective disorder	7101	94.6	7266	99.2
Depressive episode	6938	92.4	6616	90.3
Recurrent depressive disorder	9182	122.3	8847	120.7
Neurotic, stress-related and somatoform disorders	15135	201.7	14543	198.5
Disorders of eating, sleep and sexual	163	2.2	158	2.2
Disorders of adult personality and behaviour	5769	76.9	5660	77.2
Mental retardation	34350	457.7	32825	448.0
Specific disorders of psychological development	840	11.2	854	11.7
Pervasive developmental disorders	411	5.5	436	6.0
Hyperkinetic disorders	541	7.2	534	7.3
Other disorders of behaviour and emotions	446	5.9	415	5.7
Nonorganic enuresis	631	8.4	595	8.1
All other classes of diseases	10300	137.2	9384	128.0
Epilepsy	10285	137.0	9373	127.9

7. Hospitalized Patients (discharged and deceased) in Hospitals by Age^{1), 2), 3)}

Year	Age group				
	Total	0-17	18+	Incl.:	
				18-64	65+
Number					
1985	1588695	287198	1301497	•	•
1990	1534738	269742	1264996	•	•
1995	1283472	220525	1062947	•	•
2000	1181097	193861	987236	•	•
2005	1614313	308107	1306206	880895	425311
2009	1958897	322852	1636045	1058525	577520
2010	1917199	328306	1588893	1010719	578174
2011	1961177	297170	1664007	1043329	620678
Per 100 population ⁴⁾					
1985	17.7	14.8	18.5	•	•
1990	17.6	15.2	18.2	•	•
1995	15.3	14.7	15.4	•	•
2000	14.5	12.0	15.1	•	•
2005	20857.0	22576.3	20489.0	17459.0	31986.7
2009	25825.5	25526.1	25885.4	21189.7	43590.9
2010	25446.3	26179.2	25300.0	20412.0	43516.5
2011	26688.3	25079.2	26997.7	21768.9	45279.6

¹⁾ Till 1999 – from general type hospitals only.

²⁾ Till 1996 age groups are: 0–14 and 15+ years.

³⁾ From 2005 incl. healthy live births.

⁴⁾ The indicators from 2003 are calculated per 100 000 population.

8. Hospitalized Patients (discharged and deceased) in Hospitals by Classes of ICD-10 in 2011

ICD-10	Classes	Number	Per 100000 population	Structure (%)
	Total	1961177	26688.3	100.0
	I. Certain infectious and parasitic diseases	52112	709.2	2.7
	II. Neoplasms	131281	1786.5	6.7
	III. Diseases of the blood and blood-forming organs and certain disorders involving the immune mechanism	16117	219.3	0.8
	IV. Endocrine, nutritional and metabolic diseases	69180	941.4	3.5
	V. Mental and behavioural disorders	52080	708.7	2.7
	VI. Diseases of the nervous system	69865	950.7	3.6
	VII. Diseases of the eye and adnexa	60548	824.0	3.1
	VIII. Diseases of the ear and mastoid process	27867	379.2	1.4
	IX. Diseases of the circulatory system	291832	3971.3	14.9
	X. Diseases of the respiratory system	222276	3024.8	11.3
	XI. Diseases of the digestive system	167585	2280.5	8.5
	XII. Diseases of the skin and subcutaneous tissue	35295	480.3	1.8
	XIII. Diseases of the musculoskeletal system and connective tissue	82368	1120.9	4.2
	XIV. Diseases of the genitourinary system	138735	1888.0	7.1
	XV. Pregnancy, childbirth and the puerperium	134157	1825.7	6.8
	XVI. Certain conditions originating in the perinatal period	20384	277.4	1.0
	XVII. Congenital malformations, deformations and chromosomal abnormalities	5493	74.8	0.3
	XVIII. Symptoms, signs and abnormal clinical and laboratory findings, not elsewhere classified	7948	108.2	0.4
	XIX. Injury, poisoning and certain other consequences of external causes	100905	1373.1	5.2
	XXI. Factors influencing health status and contact with health services ¹⁾	275149	3744.3	14.0

¹⁾ Incl. 46238 healthy live births.

**9. Hospitalized Patients (discharged and deceased)
in Hospitals 0-17 Years of Age
by Classes of ICD-10 in 2011**

<i>ICD-10</i>	<i>Classes</i>	<i>Number</i>	<i>Per 100000 population</i>	<i>Structure (%)</i>
	Total	297170	25079.2	100.0
	I. Certain infectious and parasitic diseases	24331	2053.4	8.2
	II. Neoplasms	2900	244.7	1.0
	III. Diseases of the blood and blood-forming organs and certain disorders involving the immune mechanism	2966	250.3	1.0
	IV. Endocrine, nutritional and metabolic diseases	4015	338.8	1.3
	V. Mental and behavioural disorders	2777	234.4	0.9
	VI. Diseases of the nervous system	5363	452.6	1.8
	VII. Diseases of the eye and adnexa	2810	237.2	0.9
	VIII. Diseases of the ear and mastoid process	3198	269.9	1.1
	IX. Diseases of the circulatory system	2676	225.8	0.9
	X. Diseases of the respiratory system	103913	8769.6	35.0
	XI. Diseases of the digestive system	16263	1372.5	5.5
	XII. Diseases of the skin and subcutaneous tissue	3502	295.5	1.2
	XIII. Diseases of the musculoskeletal system and connective tissue	2261	190.8	0.8
	XIV. Diseases of the genitourinary system	10970	925.8	3.7
	XV. Pregnancy, childbirth and the puerperium	7934	669.6	2.7
	XVI. Certain conditions originating in the perinatal period	20384	1720.3	6.8
	XVII. Congenital malformations, deformations and chromosomal abnormalities	4229	356.9	1.4
	XVIII. Symptoms, signs and abnormal clinical and laboratory findings, not elsewhere classified	1413	119.2	0.5
	XIX. Injury, poisoning and certain other consequences of external causes	18412	1553.9	6.2
	XXI. Factors influencing health status and contact with health services ¹⁾	56853	4798.0	19.1

¹⁾ Incl. 52431 healthy live births.

**10. Hospitalized Patients (discharged and deceased)
in Hospitals 18-64 Years of Age
by Classes of ICD-10 in 2011**

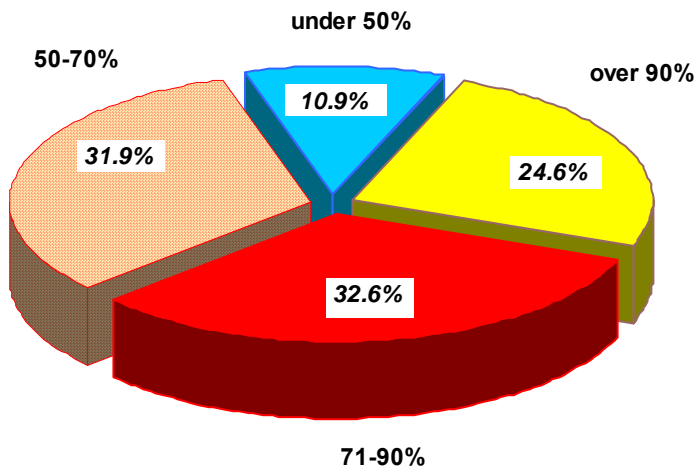
ICD-10	<i>Classes</i>	<i>Number</i>	<i>Per 100000 population</i>	<i>Structure (%)</i>
	Total	1043329	21768.9	100.0
	I. Certain infectious and parasitic diseases	21195	442.2	2.0
	II. Neoplasms	79282	1654.2	7.6
	III. Diseases of the blood and blood-forming organs and certain disorders involving the immune mechanism	8032	167.6	0.8
	IV. Endocrine, nutritional and metabolic diseases	40456	844.1	3.9
	V. Mental and behavioural disorders	44521	928.9	4.3
	VI. Diseases of the nervous system	43011	897.4	4.1
	VII. Diseases of the eye and adnexa	22460	468.6	2.1
	VIII. Diseases of the ear and mastoid process	16280	339.7	1.6
	IX. Diseases of the circulatory system	121500	2535.1	11.6
	X. Diseases of the respiratory system	70116	1463.0	6.7
	XI. Diseases of the digestive system	93386	1948.5	9.0
	XII. Diseases of the skin and subcutaneous tissue	21624	451.2	2.1
	XIII. Diseases of the musculoskeletal system and connective tissue	56048	1169.4	5.4
	XIV. Diseases of the genitourinary system	90201	1882.0	8.6
	XV. Pregnancy, childbirth and the puerperium	126223	2633.6	12.1
	XVI. Certain conditions originating in the perinatal period	-	-	-
	XVII. Congenital malformations, deformations and chromosomal abnormalities	1130	23.6	0.1
	XVIII. Symptoms, signs and abnormal clinical and laboratory findings, not elsewhere classified	3192	66.6	0.3
	XIX. Injury, poisoning and certain other consequences of external causes	55709	1162.4	5.3
	XXI. Factors influencing health status and contact with health services	128963	2690.8	12.4

11. Hospitalized Patients (discharged and deceased) in Hospitals over 65 Years of Age by Classes of ICD-10 in 2011

ICD-10	<i>Classes</i>	<i>Number</i>	<i>Per 100000 population</i>	<i>Structure (%)</i>
	Total	620678	45279.6	100.0
	I. Certain infectious and parasitic diseases	6586	480.5	1.1
	II. Neoplasms	49099	3581.9	7.9
	III. Diseases of the blood and blood-forming organs and certain disorders involving the immune mechanism	5119	373.4	0.8
	IV. Endocrine, nutritional and metabolic diseases	24709	1802.6	4.0
	V. Mental and behavioural disorders	4782	348.9	0.8
	VI. Diseases of the nervous system	21491	1567.8	3.5
	VII. Diseases of the eye and adnexa	35278	2573.6	5.7
	VIII. Diseases of the ear and mastoid process	8389	612.0	1.3
	IX. Diseases of the circulatory system	167656	12230.8	27.0
	X. Diseases of the respiratory system	48247	3519.7	7.8
	XI. Diseases of the digestive system	57936	4226.5	9.3
	XII. Diseases of the skin and subcutaneous tissue	10169	741.8	1.6
	XIII. Diseases of the musculoskeletal system and connective tissue	24059	1755.1	3.9
	XIV. Diseases of the genitourinary system	37564	2740.4	6.1
	XV. Pregnancy, childbirth and the puerperium	–	–	–
	XVI. Certain conditions originating in the perinatal period	–	–	–
	XVII. Congenital malformations, deformations and chromosomal abnormalities	134	9.8	0.0
	XVIII. Symptoms, signs and abnormal clinical and laboratory findings, not elsewhere classified	3343	243.9	0.5
	XIX. Injury, poisoning and certain other consequences of external causes	26784	1953.9	4.3
	XXI. Factors influencing health status and contact with health services	89333	6517.0	14.4

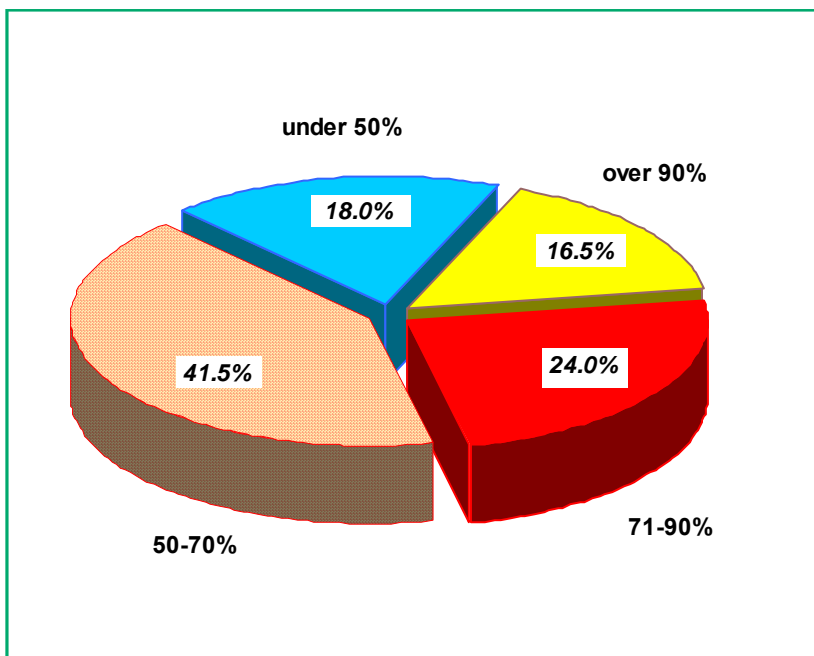
12. Primary Disability of Persons over 16 Years of Age

Year	Loss of capacity to work								total	
	Over 90%		71% – 90%		50% – 70%		under 50%			
	number	%	number	%	number	%	number	%	number	per 1000 population over 16 years of age
2001	29335	36.8	31394	39.3	14847	18.6	4227	5.3	79803	12.1
2004	38413	28.8	56862	42.7	28365	21.3	9611	7.2	133251	20.2
2005	28451	24.7	44452	38.6	28837	25.0	13438	11.7	115178	17.5
2008	15339	24.3	22111	35.1	18544	29.4	7093	11.2	63087	9.7
2009	16330	23.6	24082	34.9	21019	30.4	7647	11.1	69078	10.7
2010	14764	22.9	21002	32.6	20746	32.2	7935	12.3	64447	10.0
2011	15803	24.6	21012	32.6	20524	31.9	7031	10.9	64370	10.2



13. Primary Disability of Persons under 16 Years of Age

Year	Loss of capacity								total	
	over 90%		71% – 90%		50% – 70%		under 50%			
	number	%	number	%	number	%	number	%	number	per 1000 population under 16 years of age
2001	2570	37.8	1757	25.8	1735	25.5	740	10.9	6802	5.1
2004	1222	20.7	1181	20.0	2645	44.9	851	14.4	5899	5.0
2005	801	17.1	•	•	•	•	819	17.5	4674	4.0
2008	405	13.0	•	•	•	•	487	15.7	3106	2.8
2009	517	14.4	•	•	•	•	453	12.7	3578	3.3
2010	628	16.4	•	•	•	•	570	14.9	3833	3.5
2011	793	16.5	1150	24.0	1991	41.5	863	18.0	4797	4.6



14. Primary Disability of Persons over 16 Years of Age by Class of Disease and Loss of Capacity to work in 2011

(number)

ICD-10	Classes	over 90%	71%–90%	50%–70%	under 50%	Total
	Total	15803	21012	20524	7031	64370
	I.Certain infectious and parasitic diseases	70	506	99	56	731
	II.Neoplasms	6625	4447	1158	96	12326
	IV.Endocrine, nutritional and metabolic diseases	373	1544	2465	830	5212
	V.Mental and behavioural disorders	808	1192	1255	149	3404
	VI.Diseases of the nervous system	610	725	683	276	2294
	VII.Diseases of the eye and adnexa	551	627	766	265	2209
	VIII.Diseases of the ear and mastoid process	27	290	513	194	1024
	IX.Diseases of the circulatory system	4585	8366	8309	2574	23834
	X.Diseases of the respiratory system	54	193	643	404	1294
	XI.Diseases of the digestive system	282	417	436	152	1287
	XIII.Diseases of the musculoskeletal system and connective tissue	726	1777	2170	1149	5822
	XIV.Diseases of the genitourinary system	305	277	550	189	1321
	XVII.Congenital malformations, deformations and chromosomal abnormalities	18	65	151	67	301
	XIX.Injury, poisoning and certain other consequences of external causes	723	476	1117	573	2889
	Other classes	46	110	209	57	422

15. Primary Disability of Persons under 16 Years of Age by Class of Disease and Loss of Capacity in 2011

(number)

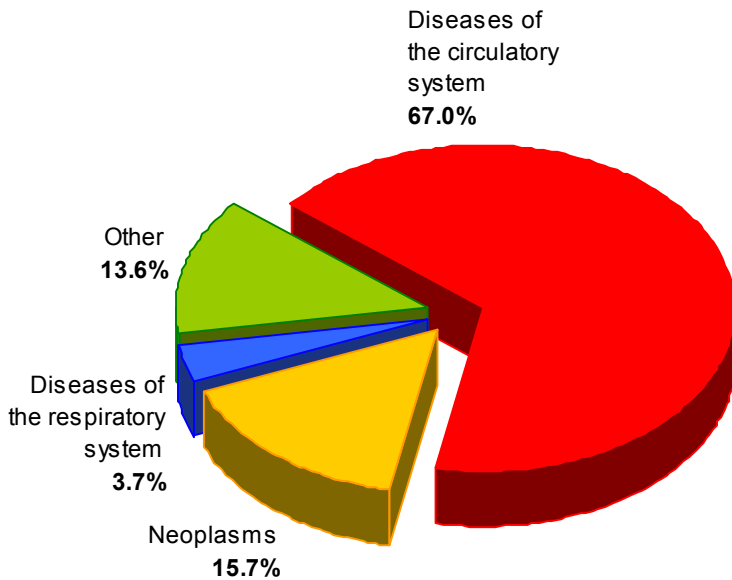
<i>ICD-10</i>	<i>Classes</i>	<i>over 90%</i>	<i>50%–90%</i>	<i>under 50%</i>	<i>Total</i>
	Total	793	3141	863	4797
	I. Certain infectious and parasitic diseases	5	139	2	146
	II. Neoplasms	89	39	2	130
	III. Diseases of the blood and blood-forming organs and certain disorders involving the immune mechanism	10	27	12	49
	IV. Endocrine, nutritional and metabolic diseases	29	211	27	267
	V. Mental and behavioural disorders	146	510	108	764
	VI. Diseases of the nervous system	251	458	79	788
	VII. Diseases of the eye and adnexa	26	117	41	184
	VIII. Diseases of the ear and mastoid process	9	125	15	149
	IX. Diseases of the circulatory system	9	14	2	25
	X. Diseases of the respiratory system	7	779	441	1227
	XI. Diseases of the digestive system	8	47	8	63
	XIII. Diseases of the musculoskeletal system and connective tissue	6	64	9	79
	XIV. Diseases of the genitourinary system	2	30	10	42
	XVII. Congenital malformations, deformations and chromosomal abnormalities	187	484	80	751
	XIX. Injury, poisoning and certain other consequences of external causes	4	55	14	73
	Other classes	5	42	13	60

16. Mortality by Causes in 2011

<i>Cause of death (ICD-10)</i>	<i>Number</i> ¹⁾	<i>Per 100000 population</i>	<i>Percentage (%)</i>
Total	108258	1473.2	100.0
Certain infectious and parasitic diseases	520	7.1	0.5
Neoplasms	16955	230.7	15.7
Diseases of the blood and blood-forming organs and certain disorders involving the immune mechanism	144	2.0	0.1
Endocrine, nutritional and metabolic diseases	1641	22.3	1.5
Mental and behavioural disorders	77	1.1	0.1
Diseases of the nervous system	995	13.5	0.9
Diseases of the eye and adnexa	6	0.1	0.0
Diseases of the ear and mastoid process	6	0.1	0.0
Diseases of the circulatory system	72582	987.7	67.0
Diseases of the respiratory system	4012	54.6	3.7
Diseases of the digestive system	3263	44.4	3.0
Diseases of the skin and subcutaneous tissue	22	0.3	0.0
Diseases of the musculoskeletal system and connective tissue	58	0.8	0.1
Diseases of the genitourinary system	1165	15.9	1.1
Pregnancy, childbirth and the puerperium	2	0.0	0.0
Certain conditions originating in the perinatal period	290	3.9	0.3
Congenital malformations, deformations and chromosomal abnormalities	141	1.9	0.1
Symptoms, signs and abnormal clinical and laboratory findings, not elsewhere classified	3559	48.4	3.3
External causes of morbidity and mortality	2820	38.4	2.6

¹⁾ NSI data

Mortality by Causes in 2011



III. HEALTH FACILITIES

1. Health Facilities and Hospital Beds in 2011

<i>Types of health establishments</i>	<i>Number</i>	<i>Beds</i>
Health establishments for hospital care – total	315	44811
Multiprofile hospitals	120	25500
Multiprofile hospital for active treatment	119	25460
Specialized hospitals	76	7837
Specialized hospital for active treatment	39	3837
Specialized hospital for continuing and long term treatment	5	241
Specialized hospital for continuing, long term treatment and rehabilitation	13	935
Specialized hospital for rehabilitation	19	2824
Psychiatric hospitals	12	2448
Private facilities for hospital care	89	5799
Health facilities for outpatient care (from Health establishments' reports)		
Outpatient facilities for primary medical care – individual practices	3569	–
Outpatient facilities for primary dental care – individual practices	4850	–
Outpatient facilities for primary medical care – group practices	219	–
Outpatient facilities for primary dental care – group practices	264	–
Outpatient facilities for specialized medical care – individual practices	2858	–
Outpatient facilities for specialized dental care – individual practices	62	–

1. Health Facilities and Hospital Beds in 2011

(continued from previous)

<i>Types of health establishments</i>	<i>Number</i>	<i>Beds</i>
Outpatient facilities for specialized medical care – group practices	146	–
Outpatient facilities for specialized dental care – group practices	1	–
Medical center	559	617
Dental center	49	6
Medico-dental center	35	38
Diagnostic-consulting center	121	263
Stand-alone medico-diagnostic and medico-technical laboratories	1006	–
Other healthcare and health establishments		
Integral oncological centers	7	1152
Centers for dermato-venerological diseases	10	100
Centers for mental health	12	1328
Emergency healthcare centers	28	–
Stand alone centers for transfusional haematology	4	–
Medico-social care for children centers	31	3756
Hospises	49	790
National centers without beds	7	–
Regional centers for health	28	–
Sanatorial facilities	4	674

2. Beds in Hospitals on 31.XII.2011 by Type

<i>Type of beds</i>	<i>Number of beds</i>	<i>Percentage (%)</i>	<i>Per 10 000 population</i>
Total¹⁾	44811		61.2
Incl.:			
Total²⁾	41584	100.0	56.8
Incl.:			
Reanimation and intensive care	2327	5.6	3.2
incl.: internal diseases	136	0.3	0.2
cardiological	356	0.9	0.5
pediatric	171	0.4	0.2
surgical	122	0.3	0.2
neurological	268	0.6	0.4
gynecological	29	0.1	0.0
intensive care ward	1053	2.5	1.4
other	192	0.5	0.3
For active treatment	32406	77.9	44.2
incl.: internal diseases	2574	6.3	3.5
gastroenterological	1029	2.5	1.4
endocrinological	593	1.4	0.8
cardiological	1902	4.6	2.6
reumocardiological	333	0.8	0.5
pulmophthysiatric	2120	5.1	2.9
nephrological	524	1.3	0.7
haematological	440	1.1	0.6
pediatric	2275	5.5	3.1
micropediatric	425	1.0	0.6
neonatological	1220	2.9	1.7

¹⁾ Hospital beds of other administrations included, but not allocated by type.

²⁾ Hospital beds of other administrations not included.

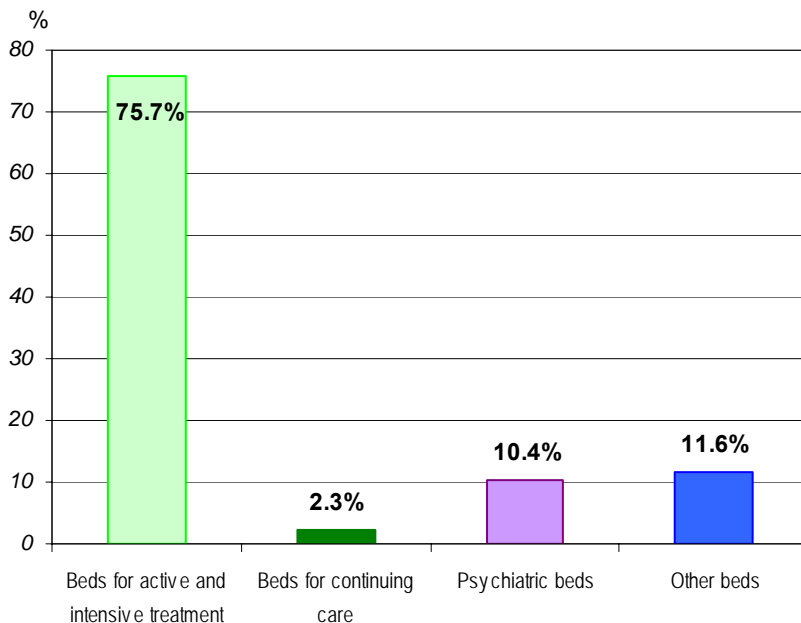
2. Beds in Hospitals on 31.XII.2011 by Type

(continued from previous)

<i>Type of beds</i>	<i>Number of beds</i>	<i>Percentage (%)</i>	<i>Per 10 000 population</i>
surgical	4088	9.8	5.6
traumatological	1694	4.1	2.3
urological	803	1.9	1.1
neurosurgical	394	0.9	0.5
gynecological	1119	2.7	1.5
obstetrics	1344	3.2	1.8
pathological pregnancy	662	1.6	0.9
infectious	846	2.0	1.2
ophthalmological	712	1.7	1.0
oto-rhino-laryngological	665	1.6	0.9
psychiatric	2514	6.0	3.4
neurological	2659	6.4	3.6
dermato-venerological	255	0.6	0.3
toxicological	62	0.1	0.1
oncological	1154	2.8	1.6
For continuing and long term treatment	6590	15.9	9.0
incl.: internal diseases	379	0.9	0.5
cardiological	–	–	–
rheumatological	–	–	–
pulmophthysiatrical	410	1.0	0.6
orthopaedo-traumatological	10	0.0	0.0
psychiatric	550	1.3	0.8
neurological	107	0.3	0.1
premature baby, hypotrophy, or birth defects	33	0.1	0.0
physiotherapeutic and rehabilitation	5023	12.1	6.9
other	78	0.2	0.1
Day care	261	0.6	0.4

3. Beds in Hospitals and Other Healthcare Establishments on 31.XII.2011 by Type¹⁾

Type of beds	Number of beds	Percentage (%)	Per 10 000 population
Total²⁾	47391		64.7
Incl.:			
Total³⁾	44164	100.0	60.3
Incl.:			
Beds for active and intensive treatment	33420	75.7	45.6
Beds for continuing care	1017	2.3	1.4
Psychiatric beds	4614	10.4	6.3
Other beds	5113	11.6	7.0
Incl.: physiotherapeutic and rehabilitation day care	5023	11.4	6.9
	90	0.2	0.1



¹⁾ According to statistical grouping used by Eurostat.

²⁾ Hospital beds of other administrations included, but not allocated by type.

³⁾ Hospital beds of other administrations not included.

IV. MEDICAL PERSONNEL

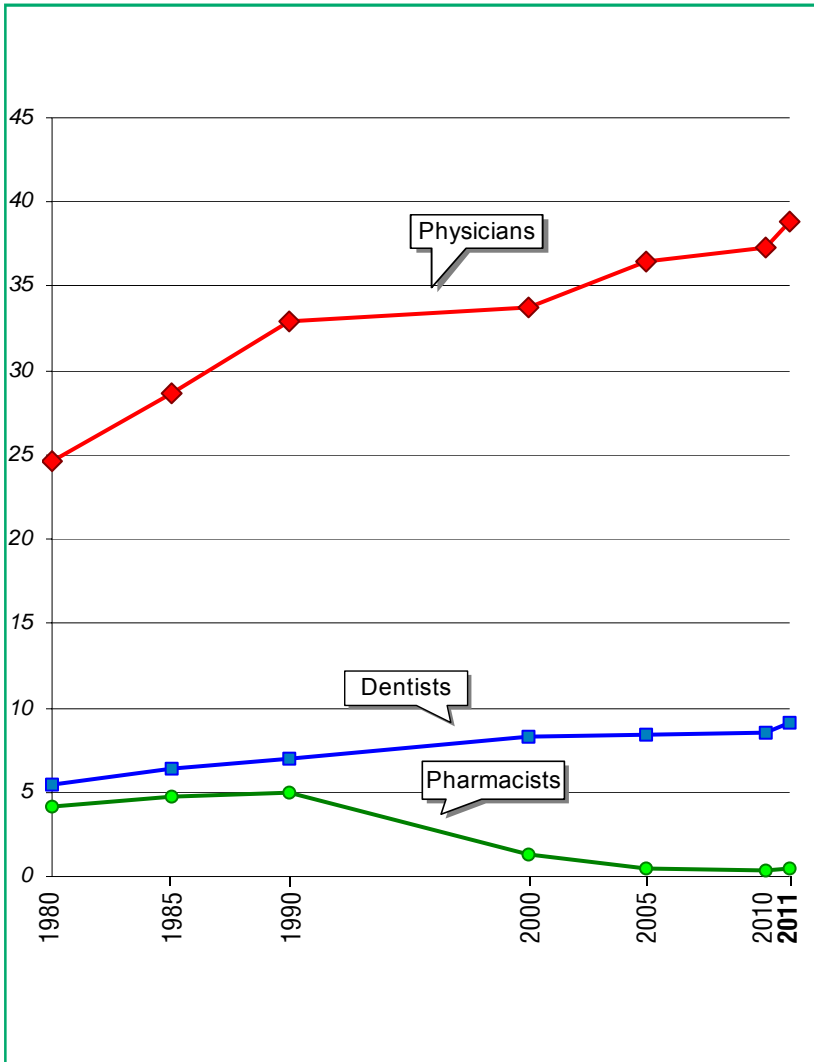
1. Medical Personnel¹⁾

	1980	1990	2000	2005	2010	2011
Number						
Physicians	21796	28497	27526	28197	27997	28411
Dentists	4839	6109	6778	6493	6355	6655
Auxiliary medical personnel	77532	88387	49840	47657	47468	47427
Incl.:						
med.assist.	7355	7617	3158	2466	2417	2439
midwives	7897	7544	4131	3455	3247	3270
nurses	45449	53810	31479	31235	31786	31609
clinical laboratory and X-ray technicians	6757	7604	5964	5935	5765	5837
dental technicians	2342	2858	1305	1401	1280	1514
pharmaceutical assist.	4057	4089	658	238	242	233
other	3675	4865	3145	2927	2731	2525
Per 10 000 population						
Physicians	24.6	32.9	33.8	36.5	37.3	38.8
Dentists	5.4	7.0	8.3	8.4	8.5	9.1
Auxiliary medical personnel	87.3	102.0	61.2	61.7	63.2	64.7
Population per:						
one physician	407	304	296	274	268	258
one dentist	1834	1419	1202	1189	1181	1101

¹⁾ NSI data

Medical Personnel

(per 10 000 population)



2. Physicians by Speciality¹⁾

<i>Specialties</i>	<i>2010</i>		<i>2011</i>	
	<i>number</i>	<i>per 10000 population</i>	<i>number</i>	<i>per 10000 population</i>
Physicians-total²⁾	27997	37.3	28411	38.8
incl.:				
internal medicine	1403	1.9	1467	2.0
gastroenterology	396	0.5	423	0.6
endocrinology	373	0.5	375	0.5
cardiology	1066	1.4	1112	1.5
nephrology	313	0.4	318	0.4
haematology	144	0.2	139	0.2
pulmophytisyatry	538	0.7	529	0.7
pediatry	1425	1.9	1423	1.9
surgery	1399	1.9	1474	2.0
traumatology	686	0.9	740	1.0
urology	364	0.5	391	0.5
neurosurgery	144	0.2	157	0.2
infectious	208	0.3	201	0.3
gynecology	1387	1.8	1386	1.9
ophthalmology	661	0.9	678	0.9
oto-rhino-laryngology	519	0.7	519	0.7
neurology	1139	1.5	1186	1.6
psychiatry	519	0.7	565	0.8
dermato-venerology	379	0.5	360	0.5
anaesthesiology	1347	1.8	1439	2.0
roentgenology	865	1.2	860	1.2
laboratory physicians	611	0.8	613	0.8
physiotherapy and rehabilitation	459	0.6	477	0.7
urgent care medicine	1134	1.5	984	1.3

¹⁾ NSI data

²⁾ Physicians-oncologists are included in the respective general speciality – internists, surgeons etc.

V. ACTIVITIES OF THE HEALTH FACILITIES

1. Activities of the Inpatient Wards of the Hospital Health Care Facilities in 2011

<i>Types of establishments</i>	<i>Admitted</i>	<i>Discharged</i>	<i>Deceased</i>
Healthcare establishments for hospital care – total¹⁾	1800552	1777998	24647
Multiprofile hospitals	1185456	1165005	22215
Multiprofile hospital for active treatment	1185014	1164565	22214
Specialized hospitals	288710	287666	1157
Specialized hospital for active treatment	171960	171100	998
Specialized hospital for continuing and long term treatment	10045	10055	6
Specialized hospital for continuing, long term treatment and rehabilitation	24658	24474	150
Specialized hospital for rehabilitation	82047	82037	3
Psychiatric hospitals	10541	10593	106
Private facilities for hospital care	315845	314734	1169
Integral oncological centers	61196	60867	345
Centers for dermato-venerological diseases	3588	3594	–
Centers for mental health	19402	19359	27

¹⁾ Excl. facilities of other administrations.

1. Activities of the Inpatient Wards of the Hospital Health Care Facilities in 2011

(continued from previous)

<i>Types of establishments</i>	<i>Bed days</i>	<i>Utiliza- tion of beds (days)</i>	<i>Turn- over of beds</i>	<i>Average length of stay (days)</i>	<i>Hospital morta- lity (%)</i>
Healthcare establishments for hospital care – total¹⁾	1818130	255	44	5.8	1.4
Multiprofile hospitals	1198016	263	47	5.6	1.9
Multiprofile hospital for active treatment	1197574	263	47	5.6	1.9
Specialized hospitals	290738	259	38	6.9	0.4
Specialized hospital for active treatment	173681	288	47	6.1	0.6
Specialized hospital for continuing and long term treatment	10111	284	38	7.4	0.1
Specialized hospital for continuing, long term treat- ment and rehabilitation	24863	251	26	9.8	0.6
Specialized hospital for rehabilitation	82083	222	29	7.6	0.0
Psychiatric hospitals	12413	286	5	57.3	1.0
Private facilities for hospital care	316963	199	55	3.6	0.4
Integral oncological centers	61506	276	54	5.1	0.6
Centers for dermato- venerological diseases	3627	293	36	8.1	–
Centers for mental health	20197	297	15	19.9	0.1

¹⁾ Excl. facilities of other administrations.

2. Utilization, Turnover and Average Length of Stay in Health Care Facilities in 2011 by Type of Beds

<i>Type of bed</i>	<i>Utilization (days)</i>	<i>Turnover</i>	<i>Average length of stay (days)</i>
Total¹⁾	255	44	5.8
Incl.:			
Reanimation and intensive care	209	70	3.0
incl.: internal diseases	213	59	3.6
cardiological	238	119	2.0
pediatric	235	59	4.0
surgical	180	52	3.5
neurological	262	53	4.9
gynecological	118	62	1.9
intensive care ward	184	69	2.7
other	229	38	6.1
For active treatment	264	52	5.1
incl.: internal diseases	233	44	5.3
gastroenterological	267	59	4.5
endocrinological	266	51	5.2
cardiological	257	69	3.7
reumocardiological	262	57	4.6
pulmophtysiatrical	294	32	9.3
nephrological	265	49	5.5
haematological	356	69	5.2
pediatric	258	45	5.7
micropediatric	284	45	6.3
neonatological	262	55	4.8
surgical	249	58	4.3

¹⁾ Excl. facilities of other administrations.

2. Utilization, Turnover and Average Length of Stay in Health Care Facilities in 2011 by Type of Beds

(continued from previous)

<i>Type of bed</i>	<i>Utilization (days)</i>	<i>Turnover</i>	<i>Average length of stay (days)</i>
orthopaedo-traumatological	244	51	4.8
urological	270	69	3.9
neurosurgical	284	50	5.7
gynecological	203	77	2.6
obstetrics	230	64	3.6
pathological pregnancy	252	65	3.8
infectious	256	48	5.3
ophthalmological	193	94	2.1
oto-rhino-laryngological	240	58	4.1
psychiatric	307	12	26.5
neurological	263	54	4.9
dermato-venerological	273	36	7.6
toxicological	174	60	2.9
oncological	400	65	6.2
For continuing and long term treatment	222	26	8.5
incl.: internal diseases	113	10	11.0
cardiological	–	–	–
rheumatological	–	–	–
pulmophthysiatrical	294	31	9.6
traumatological	1	0	5.0
psychiatric	248	3	76.5
neurological	152	31	4.8
premature baby, hypotrophy, or birth defects	185	16	11.4
physiotherapeutic and rehabilitation	223	29	7.6
other	49	8	6.5
Day care	362	43	8.4

3. Women in childbirth served at inpatient healthcare facilities

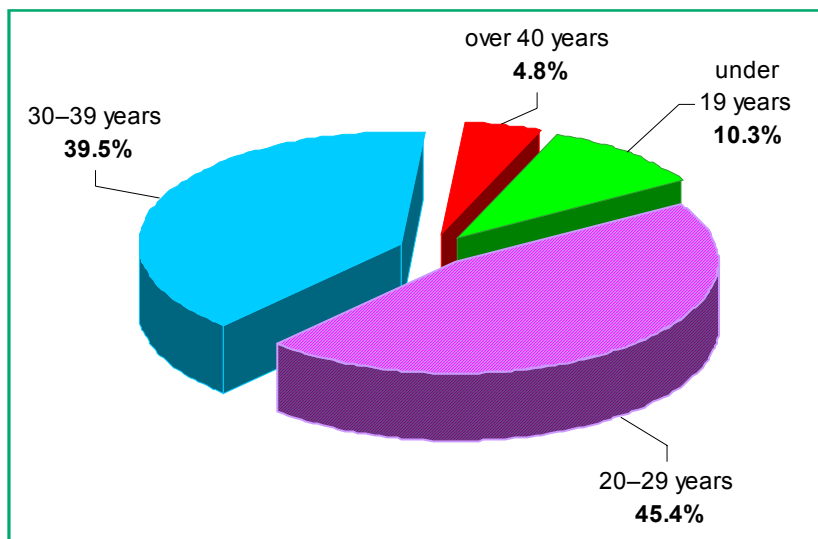
	2000	2005	2010	2011
Women giving birth at healthcare facilities	71107	67845	68854	64253
incl. cases of:				
transverse or oblique presentation	234	327	404	405
of these: unattended	23	19	13	12
Narrow pelvis	857	715	1383	1035
pelvic malpositions	1693	1952	2028	1914
complicated by:				
hemorrhages	1518	884	1185	971
extragenital diseases	629	779	555	634
of these: cardiovascular	148	160	94	141
diabetes mellitus	79	128	193	225
Admitted women after childbirth outside health facilities	793	401	337	348
Total number of women in childbirth attended	71900	68246	69191	64601
of these: multiple gestation	614	582	1088	963
Distribution of women in childbirth by age				
up to 19 years of age	12669	9863	8155	7047
from 20 to 35 years of age	56185	54407	54363	51321
above 35 years of age	3046	3976	6673	6233

4. Medical Abortions in Health Facilities during 2011 by Age Group and Type of Abortion

(Number)

Age group	Total	Type of abortions			
		Medical indicated	Spontaneous	Illegal	Legal
Total	31716	2502	9689	-	19525
< 15	182	30	64	-	88
15-19	3087	173	1037	-	1877
20-24	6635	309	1865	-	4461
25-29	7782	399	2437	-	4946
30-34	7410	443	2256	-	4711
35-39	5112	821	1525	-	2766
40-44	1388	300	469	-	619
45-49	118	27	35	-	56
> 50	2	-	1	-	1

Medical Abortions by Age



5. Medical Abortions in Health Facilities

(Number)

	1980	1985	1990	1995	2000	2010	2011
Total	156056	132269	144644	97092	61378	31548	31716
incl:							
medically indicated	3830	5586	4352	4073	2567	2284	2502
spontaneous abortions	15787	14245	12601	9851	10626	9999	9689
illegal abortions	180	228	91	69	29	1	–
legal abortions	136259	112210	127600	83099	48156	19264	19525

6. Persons Served by Calls attended and ambulatory examinations in need of urgent medical care in the Centers for Urgent Medical Care and Urgent Wards

	2010		2011	
	Number	(%)	Number	(%)
Persons attended – total	2509687	100.0	2496265	100.0
Incl.:				
Centers for urgent medical care	1318024	52.5	1279529	51.3
incl. at calls performed	684593	27.3	690363	27.7
Urgent wards	1101720	43.9	1179226	47.2

7. Number and Type of Surgeries of Patients, Discharged from Hospitals in 2011

<i>Type of surgery</i>	<i>Discharged surgical patients</i>	<i>Incl.:</i>		<i>Lethality (%)</i>
		<i>with compli- cations</i>	<i>dead</i>	
Total	520466	2376	3526	0.7
Surgery of gastrointestinal tract	77418	525	1272	1.6
Apendectomy due to acute appendicits	8938	21	19	0.2
Herniotomy due to unobstructed hernia	19488	43	10	0.1
Obstetrics-gynecological surgeries	118204	258	18	0.0
Endocrine surgeries	3038	6	2	0.1
Orthopaedics-traumatology surgeries	78830	292	365	0.5
Chest surgeries	15748	148	184	1.2
Urological surgeries	44692	189	126	0.3
Otho-Rhino-Larhingological surgeries	32017	22	56	0.2
Tonsillectomy	4213	3	-	-
Ophtalmological surgeries	48404	11	-	-
Catharacta	26334	4	-	-
Neurosurgeries	8822	63	471	5.3
Cardiovascular surgeries	7843	449	302	3.9
Vascular surgeries	13930	150	146	1.0
Facial and dental surgeries	7535	4	6	0.1
Plastic, reconstructive and esthetic surgeries	5219	5	26	0.5
Other surgical interventions	58766	254	552	0.9

**8. Number and Type of Surgeries of Patients,
Discharged from Hospitals in 2011
by type of healthcare facility**

<i>Type of surgery</i>	<i>Total</i>	<i>Multiprofile hospitals for active treatment</i>	<i>Specialized hospitals for active treatment</i>
Total	520466	311239	42378
Surgery of gastrointestinal tract	77418	47295	1910
Apendectomy due to acute appendicitis	8938	7579	4
Herniotomy due to unobstructed hernia	19488	11534	232
Obstetrics-gynecological surgeries	118204	67474	20438
Endocrine surgeries	3038	1224	800
Orthopaedics-traumatology surgeries	78830	45547	3527
Chest surgeries	15748	7131	3402
Urological surgeries	44692	30697	519
Otho-Rhino-Larhingological surgeries	32017	23227	442
Tonsillectomy	4213	2303	7
Ophtalmological surgeries	48404	21791	2983
Catharacta	26334	11473	1319
Neurosurgeries	8822	7185	161
Cardiovascular surgeries	7843	3748	2511
Vascular surgeries	13930	8214	2115
Facial and dental surgeries	7535	4481	1440
Plastic, reconstructive and esthetic surgeries	5219	3278	75
Other surgical interventions	58766	39947	2055

8. Number and Type of Surgeries of Patients, Discharged from Hospitals in 2011 by type of healthcare facility

(continued from previous)

<i>Type of surgery</i>	<i>Private facilities for hospital care</i>	<i>Other facilities for hospital care</i>	<i>Integral oncological centers</i>
Total	135002	19904	11943
Surgery of gastrointestinal tract	23023	3990	1200
Apendectomy due to acute appendicits	1167	187	1
Herniotomy due to unobstructed hernia	6634	1076	12
Obstetrics-gynecological surgeries	25778	1174	3340
Endocrine surgeries	682	255	77
Orthopaedics-traumatology surgeries	26183	3572	1
Chest surgeries	1256	1125	2834
Urological surgeries	9485	2873	1118
Otho-Rhino-Larhingological surgeries	7011	1068	269
Tonsillectomy	1735	168	–
Ophtalmological surgeries	22335	1295	–
Catharacta	12646	896	–
Neurosurgeries	1175	301	–
Cardiovascular surgeries	1394	190	–
Vascular surgeries	2612	911	78
Facial and dental surgeries	943	671	–
Plastic, reconstructive and esthetic surgeries	1701	148	17
Other surgical interventions	11424	2331	3009

VI. ECONOMICAL INDICATORS OF THE HEALTH FACILITIES FOR 2011

(in leva)

<i>Types of health facilities</i>	<i>Average costs:</i>				
	Per patient	Per bed	Per bed day	Per medicine day	Per food day
Multiprofile hospital for active treatment					
Regional	635	31620	113.00	22.89	1.94
Municipal	515	22408	98.77	13.81	1.77
City	586	27887	112.73	17.42	2.88
Specialized hospital for active treatment					
Pulmonary diseases	588	14602	52.64	9.90	3.09
Gynecological diseases	603	34598	149.22	24.61	2.38
State psychiatric hospitals	1488	7454	26.07	2.23	2.03
Other healthcare establishments for hospital care					
Integral oncological centers	959	57689	201.00	105.29	2.45
Centers for dermatovenerological diseases	583	21139	72.24	7.85	3.04
Centers for mental health	683	11138	34.92	2.86	2.35

VII. REVIEW BY REGIONS

1. Population on 31.XII.2011¹⁾

<i>Regions</i>	<i>Total</i>	<i>Male</i>	<i>Female</i>	<i>Urban</i>	<i>Rural</i>
Number					
Total	7327224	3566767	3760457	5324900	2002324
Blagoevgrad	322025	157707	164318	190619	131406
Bourgas	414947	203139	211808	310571	104376
Varna	474344	232141	242203	396695	77649
V. Tarnovo	256279	123763	132516	177892	78387
Vidin	99481	48568	50913	63054	36427
Vratza	184662	91072	93590	108506	76156
Gabrovo	121389	58610	62779	99293	22096
Dobrich	188088	92342	95746	129668	58420
Kardgali	152009	75526	76483	63158	88851
Kjustendil	134990	65968	69022	92711	42279
Lovetch	139609	68387	71222	86775	52834
Montana	145984	71682	74302	93267	52717
Pazardgik	273803	134803	139000	170216	103587
Pernik	131987	64622	67365	103945	28042
Pleven	266865	131095	135770	177428	89437
Plovdiv	680884	328759	352125	506277	174607
Razgrad	123600	60522	63078	58497	65103
Rousse	233767	113905	119862	179565	54202
Silistra	118433	58746	59687	53496	64937
Sliven	196712	96110	100602	130034	66678
Smoljan	120456	58717	61739	66060	54396
Sofia-capital	1296615	618277	678338	1236606	60009
Sofia	245616	120898	124718	149595	96021
St. Zagora	331135	161652	169483	236789	94346
Targovishte	119865	58848	61017	64779	55086
Haskovo	243955	119116	124839	176099	67856
Shoumen	179668	87956	91712	112668	67000
Yambol	130056	63836	66220	90637	39419

¹⁾ NSI data

1. Population on 31.XII.2011

(continued from previous)

<i>Regions</i>	<i>Total</i>	<i>Male</i>	<i>Female</i>	<i>Urban</i>	<i>Rural</i>
Percentage (%)					
Total	100.0	48.7	51.3	72.7	27.3
Blagoevgrad	100.0	49.0	51.0	59.2	40.8
Bourgas	100.0	49.0	51.0	74.8	25.2
Varna	100.0	48.9	51.1	83.6	16.4
V. Tarnovo	100.0	48.3	51.7	69.4	30.6
Vidin	100.0	48.8	51.2	63.4	36.6
Vratza	100.0	49.3	50.7	58.8	41.2
Gabrovo	100.0	48.3	51.7	81.8	18.2
Dobrich	100.0	49.1	50.9	68.9	31.1
Kardgali	100.0	49.7	50.3	41.5	58.5
Kjustendil	100.0	48.9	51.1	68.7	31.3
Lovetch	100.0	49.0	51.0	62.2	37.8
Montana	100.0	49.1	50.9	63.9	36.1
Pazardgik	100.0	49.2	50.8	62.2	37.8
Pernik	100.0	49.0	51.0	78.8	21.2
Pleven	100.0	49.1	50.9	66.5	33.5
Plovdiv	100.0	48.3	51.7	74.4	25.6
Razgrad	100.0	49.0	51.0	47.3	52.7
Rousse	100.0	48.7	51.3	76.8	23.2
Silistra	100.0	49.6	50.4	45.2	54.8
Sliven	100.0	48.9	51.1	66.1	33.9
Smoljan	100.0	48.7	51.3	54.8	45.2
Sofia-capital	100.0	47.7	52.3	95.4	4.6
Sofia	100.0	49.2	50.8	60.9	39.1
St. Zagora	100.0	48.8	51.2	71.5	28.5
Targovishte	100.0	49.1	50.9	54.0	46.0
Haskovo	100.0	48.8	51.2	72.2	27.8
Shoumen	100.0	49.0	51.0	62.7	37.3
Yambol	100.0	49.1	50.9	69.7	30.3

2. Live Births in 2011¹⁾

<i>Regions</i>	<i>Total</i>	<i>Urban</i>	<i>Rural</i>	<i>Total</i>	<i>Urban</i>	<i>Rural</i>
	Number			Per 1000 population		
Total	70846	53396	17450	9.6	10.0	8.7
Blagoevgrad	3169	1999	1170	9.8	10.5	8.9
Bourgas	4281	3153	1128	10.3	10.1	10.8
Varna	4948	4255	693	10.4	10.7	8.9
V. Tarnovo	2280	1707	573	8.9	9.6	7.3
Vidin	752	542	210	7.5	8.5	5.7
Vratza	1594	948	646	8.6	8.7	8.4
Gabrovo	993	817	176	8.1	8.2	7.9
Dobrich	1843	1223	620	9.8	9.4	10.5
Kardgali	1446	667	779	9.5	10.5	8.7
Kjustendil	1085	896	189	8.0	9.6	4.4
Lovetch	1220	787	433	8.7	9.0	8.1
Montana	1264	878	386	8.6	9.4	7.2
Pazardgik	2749	1808	941	10.0	10.6	9.1
Pernik	1005	869	136	7.6	8.3	4.8
Pleven	2394	1613	781	8.9	9.0	8.7
Plovdiv	6827	5357	1470	10.0	10.6	8.4
Razgrad	1055	438	617	8.5	7.4	9.4
Rousse	1855	1474	381	7.9	8.2	7.0
Silistra	1043	427	616	8.8	7.9	9.4
Sliven	2471	1522	949	12.5	11.7	14.3
Smoljan	788	469	319	6.5	7.1	5.8
Sofia-capital	13742	13306	436	10.6	10.8	7.3
Sofia	2119	1464	655	8.6	9.8	6.8
St. Zagora	3308	2358	950	10.0	9.9	10.0
Targovishte	1248	611	637	10.4	9.4	11.5
Haskovo	2232	1697	535	9.1	9.6	7.8
Shoumen	1832	1145	687	10.2	10.1	10.2
Yambol	1303	966	337	10.0	10.6	8.5

¹⁾ NSI data

3. Deaths in 2011¹⁾

<i>Regions</i>	<i>Total</i>	<i>Urban</i>	<i>Rural</i>	<i>Total</i>	<i>Urban</i>	<i>Rural</i>
	Number			Per 1000 population		
Total	108258	65182	43076	14.7	12.2	21.4
Blagoevgrad	3856	1990	1866	11.9	10.4	14.1
Bourgas	5520	3567	1953	13.3	11.5	18.7
Varna	5636	4048	1588	11.9	10.2	20.4
V. Tarnovo	4326	2168	2158	16.8	12.1	27.3
Vidin	2279	918	1361	22.7	14.5	37.0
Vratza	3442	1469	1973	18.5	13.4	25.8
Gabrovo	2176	1477	699	17.8	14.8	31.3
Dobrich	2924	1582	1342	15.5	12.2	22.8
Kardjali	1841	638	1203	12.1	10.1	13.5
Kjustendil	2551	1409	1142	18.8	15.1	26.7
Lovetch	2586	1249	1337	18.4	14.3	25.1
Montana	3075	1341	1734	20.9	14.3	32.5
Pazardgik	4018	2202	1816	14.6	12.9	17.5
Pernik	2509	1621	888	18.9	15.5	31.5
Pleven	4970	2458	2512	18.5	13.8	27.9
Plovdiv	9407	5951	3456	13.8	11.7	19.7
Razgrad	1849	766	1083	14.9	13.0	16.5
Rousse	3758	2405	1353	16.0	13.4	24.8
Silistra	1968	809	1159	16.5	15.0	17.8
Sliven	2857	1625	1232	14.5	12.4	18.5
Smoljan	1565	699	866	12.9	10.5	15.8
Sofia-capital	15174	14359	815	11.7	11.6	13.6
Sofia	4153	1961	2192	16.8	13.1	22.7
St. Zagora	5139	2907	2232	15.5	12.2	23.6
Targovishte	1923	850	1073	16.0	13.1	19.4
Haskovo	3840	2144	1696	15.7	12.1	24.9
Shoumen	2694	1461	1233	15.0	12.9	18.4
Yambol	2222	1108	1114	17.0	12.2	28.1

¹⁾ NSI data

4. Natural Growth of Population in 2011¹⁾

<i>Regions</i>	<i>Total</i>	<i>Urban</i>	<i>Rural</i>	<i>Total</i>	<i>Urban</i>	<i>Rural</i>
	Number			Per 1000 population		
Total	-37412	-11786	-25626	-5.1	-2.2	-12.7
Blagoevgrad	-687	9	-696	-2.1	0.1	-5.2
Bourgas	-1239	-414	-825	-3.0	-1.4	-7.9
Varna	-688	207	-895	-1.5	0.5	-11.5
V. Tarnovo	-2046	-461	-1585	-7.9	-2.5	-20.0
Vidin	-1527	-376	-1151	-15.2	-6.0	-31.3
Vratza	-1848	-521	-1327	-9.9	-4.7	-17.4
Gabrovo	-1183	-660	-523	-9.7	-6.6	-23.4
Dobrich	-1081	-359	-722	-5.7	-2.8	-12.3
Kardgali	-395	29	-424	-2.6	0.4	-4.8
Kjustendil	-1466	-513	-953	-10.8	-5.5	-22.3
Lovetch	-1366	-462	-904	-9.7	-5.3	-17.0
Montana	-1811	-463	-1348	-12.3	-4.9	-25.3
Pazardgik	-1269	-394	-875	-4.6	-2.3	-8.4
Pernik	-1504	-752	-752	-11.3	-7.2	-26.7
Pleven	-2576	-845	-1731	-9.6	-4.8	-19.2
Plovdiv	-2580	-594	-1986	-3.8	-1.1	-11.3
Razgrad	-794	-328	-466	-6.4	-5.6	-7.1
Rousse	-1903	-931	-972	-8.1	-5.2	-17.8
Silistra	-925	-382	-543	-7.7	-7.1	-8.4
Sliven	-386	-103	-283	-2.0	-0.7	-4.2
Smoljan	-777	-230	-547	-6.4	-3.4	-10.0
Sofia-capital	-1432	-1053	-379	-1.1	-0.8	-6.3
Sofia	-2034	-497	-1537	-8.2	-3.3	-15.9
St. Zagora	-1831	-549	-1282	-5.5	-2.3	-13.6
Targovishte	-675	-239	-436	-5.6	-3.7	-7.9
Haskovo	-1608	-447	-1161	-6.6	-2.5	-17.1
Shoumen	-862	-316	-546	-4.8	-2.8	-8.2
Yambol	-919	-142	-777	-7.0	-1.6	-19.6

¹⁾ NSI data

5. Infant Mortality in 2011¹⁾

<i>Regions</i>	<i>Total</i>	<i>Urban</i>	<i>Rural</i>	<i>Total</i>	<i>Urban</i>	<i>Rural</i>
	Number			Per 1000 live births		
Total	601	412	189	8.5	7.7	10.8
Blagoevgrad	31	21	10	9.8	10.5	8.5
Bourgas	40	27	13	9.3	8.6	11.5
Varna	40	31	9	8.1	7.3	13.0
V. Tarnovo	18	12	6	7.9	7.0	10.5
Vidin	6	4	2	8.0	7.4	9.5
Vratza	11	8	3	6.9	8.4	4.6
Gabrovo	8	8	–	8.1	9.8	–
Dobrich	16	10	6	8.7	8.2	9.7
Kardgali	17	9	8	11.8	13.5	10.3
Kjustendil	5	4	1	4.6	4.5	5.3
Lovetch	13	9	4	10.7	11.4	9.2
Montana	10	6	4	7.9	6.8	10.4
Pazardgik	40	26	14	14.6	14.4	14.9
Pernik	7	6	1	7.0	6.9	7.4
Pleven	22	15	7	9.2	9.3	9.0
Plovdiv	63	41	22	9.2	7.7	15.0
Razgrad	10	3	7	9.5	6.8	11.3
Rousse	18	12	6	9.7	8.1	15.7
Silistra	11	5	6	10.5	11.7	9.7
Sliven	42	22	20	17.0	14.5	21.1
Smoljan	7	4	3	8.9	8.5	9.4
Sofia-capital	58	58	–	4.2	4.4	–
Sofia	16	12	4	7.6	8.2	6.1
St. Zagora	28	21	7	8.5	8.9	7.4
Targovishte	7	3	4	5.6	4.9	6.3
Haskovo	22	17	5	9.9	10.0	9.3
Shoumen	22	9	13	12.0	7.9	18.9
Yambol	13	9	4	10.0	9.3	11.9

¹⁾ NSI data

6. Registered Cases of Certain Infectious Diseases Subject to Obligatory Reporting in 2011

(per 100 000 population)

<i>Regions</i>	<i>Scarlet fever</i>	<i>Pertussis</i>	<i>Chiken pox</i>	<i>Mumps</i>	<i>Lyme disease</i>
Total	35.5	0.6	368.9	1.9	8.1
Blagoevgrad	9.9	–	174.4	4.3	4.3
Bourgas	30.8	–	112.9	1.2	2.4
Varna	65.1	0.2	634.3	14.8	14.8
V. Tarnovo	33.4	–	132.0	–	9.3
Vidin	21.9	–	363.7	–	–
Vratza	16.1	3.8	147.9	–	7.5
Gabrovo	49.1	–	236.7	–	6.6
Dobrich	45.0	0.5	245.0	–	29.6
Kardgali	9.2	–	308.9	–	–
Kjustendil	23.5	–	323.7	–	0.7
Lovetch	24.9	–	370.6	–	–
Montana	15.6	–	280.7	–	42.1
Pazardgik	5.8	–	143.0	–	0.4
Pernik	18.1	–	479.5	0.8	21.1
Pleven	28.3	1.1	315.8	0.7	8.2
Plovdiv	32.5	–	563.8	2.6	3.4
Razgrad	22.5	–	233.8	0.8	15.3
Rousse	30.3	–	650.0	0.4	31.5
Silistra	1.7	–	114.3	–	16.8
Sliven	64.4	–	459.0	–	1.0
Smoljan	36.3	–	329.3	–	–
Sofia-capital	43.3	2.0	475.7	1.5	1.9
Sofia	8.1	2.4	176.0	1.2	0.4
St. Zagora	55.4	0.6	310.8	0.9	10.2
Targovishte	88.0	–	487.5	1.7	26.6
Haskovo	30.2	–	461.2	–	8.2
Shoumen	49.9	–	537.8	–	14.4
Yambol	81.0	–	155.2	–	6.9

6. Registered Cases of Certain Infectious Diseases Subject to Obligatory Reporting in 2011

(per 100 000 population)

<i>Regions</i>	<i>Shigellosis</i>	<i>Infectious hepatitis</i>	<i>Meningitis and meningoencephalitis</i>	
			<i>bacterial</i>	<i>viral</i>
Total	10.9	85.2	2.1	3.0
Blagoevgrad	34.1	13.6	0.9	0.6
Bourgas	9.1	60.9	1.9	2.4
Varna	10.3	19.0	2.7	4.2
V. Tarnovo	7.4	20.6	3.5	3.5
Vidin	19.9	38.9	–	5.0
Vratza	6.5	175.4	2.2	1.6
Gabrovo	2.5	22.1	1.6	4.1
Dobrich	17.5	11.1	2.1	2.1
Kardgali	1.3	87.2	3.9	3.3
Kjustendil	14.0	33.1	1.5	3.7
Lovetch	5.0	71.8	2.1	2.8
Montana	1.4	129.8	–	–
Pazardgik	20.0	117.9	0.4	–
Pernik	9.8	40.7	1.5	6.8
Pleven	3.4	100.2	0.4	3.7
Plovdiv	9.4	193.8	1.6	2.9
Razgrad	4.0	10.4	0.8	–
Rousse	0.4	7.7	3.4	3.0
Silistra	48.7	10.9	1.7	–
Sliven	11.7	80.1	3.0	5.6
Smoljan	12.4	71.8	2.5	6.6
Sofia-capital	7.0	27.9	2.2	3.1
Sofia	6.9	77.8	2.4	3.6
St. Zagora	20.8	300.9	1.8	2.4
Targovishte	9.1	15.8	1.7	0.8
Haskovo	0.8	373.5	6.9	7.7
Shoumen	8.9	12.8	2.8	1.7
Yambol	27.5	126.9	–	0.8

7. Registered Cases of Active Tuberculosis in 2011

(per 100 000 population)

<i>Regions</i>	<i>Total</i>	<i>incl. new cases</i>
Total	74.3	27.9
Blagoevgrad	115.2	26.3
Bourgas	28.4	27.0
Varna	83.7	28.2
V. Tarnovo	74.5	17.5
Vidin	55.8	43.8
Vratza	127.0	56.5
Gabrovo	114.6	41.8
Dobrich	132.8	22.2
Kardgali	89.9	17.7
Kjustendil	203.0	52.2
Lovetch	118.8	32.7
Montana	78.2	44.2
Pazardgik	28.0	24.7
Pernik	48.9	41.4
Pleven	71.1	20.1
Plovdiv	85.6	23.7
Razgrad	104.4	28.9
Rousse	49.9	22.2
Silistra	45.4	26.9
Sliven	75.1	36.5
Smoljan	57.8	21.5
Sofia-capital	66.9	29.0
Sofia	102.6	28.4
St. Zagora	51.5	18.4
Targovishte	32.4	26.6
Haskovo	40.8	18.8
Shoumen	54.9	27.7
Yambol	29.8	23.7

8. Registered Cases of Malignant Neoplasms in 2011

(per 100 000 population)

<i>Regions</i>	<i>Total</i>	<i>incl. new cases</i>
Total	3602.7	448.7
Blagoevgrad	2689.6	411.0
Bourgas	3155.8	477.1
Varna	3453.6	456.8
V. Tarnovo	4038.3	464.4
Vidin	2709.7	381.7
Vratza	3517.4	424.5
Gabrovo	4381.0	452.8
Dobrich	2921.0	421.8
Kardgali	2243.7	375.1
Kjustendil	2687.9	326.6
Lovetch	3424.0	426.8
Montana	3091.1	378.6
Pazardgik	4026.9	419.9
Pernik	2762.9	377.2
Pleven	4349.8	531.5
Plovdiv	5143.0	486.4
Razgrad	2908.3	408.9
Rousse	4333.6	531.9
Silistra	3077.2	424.3
Sliven	2860.4	391.5
Smoljan	3819.0	439.9
Sofia-capital	3769.8	451.4
Sofia	2366.6	353.6
St. Zagora	3694.7	497.7
Targovishte	3133.2	377.8
Haskovo	3475.5	541.1
Shoumen	4013.6	407.4
Yambol	3014.4	573.4

9. Registered Cases of Some Venereal and Skin Infections in 2011

(per 100 000 population)

<i>Regions</i>	<i>Syphilis</i>		<i>Gonorrhoea</i>	
	<i>total</i>	<i>incl. new cases</i>	<i>total</i>	<i>incl. new cases</i>
Total	36.6	4.8	2.8	2.7
Blagoevgrad	18.6	3.7	0.6	0.6
Bourgas	22.6	9.9	1.9	1.7
Varna	25.5	5.7	0.2	0.2
V. Tarnovo	63.3	8.5	0.4	0.4
Vidin	1.0	–	2.0	2.0
Vratza	39.3	16.1	–	–
Gabrovo	81.1	9.0	–	–
Dobrich	11.6	3.7	–	–
Kardgali	6.6	1.3	–	–
Kjustendil	33.8	7.4	–	–
Lovetch	–	–	–	–
Montana	9.5	5.4	–	–
Pazardgik	–	–	–	–
Pernik	–	–	–	–
Pleven	21.6	7.4	–	–
Plovdiv	178.3	3.8	18.6	18.6
Razgrad	4.8	0.8	–	–
Rousse	3.4	3.4	2.6	2.6
Silistra	28.6	1.7	–	–
Sliven	56.3	15.2	4.1	4.1
Smoljan	–	–	–	–
Sofia-capital	15.5	3.2	0.6	0.6
Sofia	–	–	4.9	4.9
St. Zagora	40.9	4.8	2.7	1.5
Targovishte	–	–	–	–
Haskovo	46.1	6.9	0.8	0.8
Shoumen	11.1	4.4	8.3	5.5
Yambol	65.0	9.2	4.6	4.6

10. Patients Under Observation of Psychiatric Facilities, Wards and Consultations by Type of Disease on 31.XII.2011

<i>Regions</i>	<i>Total</i>		<i>Schizophrenia, schizotypal and delusional disorders</i>		<i>Incl.: Schizophrenia</i>	
	number	per 100000 population	number	per 100000 population	number	per 100000 population
Total	151002	2060.8	36347	496.1	28365	387.1
Blagoevgrad	508	157.8	299	92.8	294	91.3
Bourgas	24168	5824.4	3838	924.9	1997	481.3
Varna	•	•	•	•	•	•
V. Tarnovo	6550	2555.8	1462	570.5	1325	517.0
Vidin	3453	3471.0	675	678.5	456	458.4
Vratza	1857	1005.6	889	481.4	869	470.6
Gabrovo	1855	1528.1	977	804.9	977	804.9
Dobrich	1805	959.7	901	479.0	851	452.4
Kardgali	4330	2848.5	1223	804.6	1038	682.9
Kjustendil	2383	1765.3	601	445.2	600	444.5
Lovetch	4013	2874.5	762	545.8	480	343.8
Montana	2234	1530.3	620	424.7	540	369.9
Pazardgik	•	•	•	•	•	•
Pernik	5322	4032.2	1068	809.2	903	684.2
Pleven	8101	3035.6	1110	415.9	1074	402.5
Plovdiv	16965	2491.6	4048	594.5	3133	460.1
Razgrad	5031	4070.4	853	690.1	776	627.8
Rousse	2858	1222.6	1114	476.5	992	424.4
Silistra	241	203.5	199	168.0	199	168.0
Sliven	5818	2957.6	1143	581.1	1018	517.5
Smoljan	4176	3466.8	1036	860.1	899	746.3
Sofia-capital	19432	1498.7	5767	444.8	4674	360.5
Sofia	5401	2199.0	1471	598.9	1053	428.7
St. Zagora	7180	2168.3	1900	573.8	957	289.0
Targovishte	6327	5278.4	1482	1236.4	935	780.0
Haskovo	4423	1813.0	1277	523.5	774	317.3
Shoumen	1889	1051.4	870	484.2	807	449.2
Yambol	4682	3600.0	762	585.9	744	572.1

10. Patients Under Observation of Psychiatric Facilities, Wards and Consultations by Type of Disease on 31.XII.2011

(continued from previous)

<i>Regions</i>	<i>Mood [affective] disorders</i>		<i>Neurotic, stress-related and somato-form disorders</i>		<i>Mental retardation</i>	
	number	per 100000 population	number	per 100000 population	number	per 100000 population
Total	26813	365.9	14543	198.5	32825	448.0
Blagoevgrad	103	32.0	19	5.9	24	7.5
Bourgas	2668	643.0	5096	1228.1	5170	1245.9
Varna	•	•	•	•	•	•
V. Tarnovo	1706	665.7	455	177.5	1234	481.5
Vidin	694	697.6	322	323.7	902	906.7
Vratza	393	212.8	60	32.5	326	176.5
Gabrovo	694	571.7	150	123.6	–	–
Dobrich	216	114.8	33	17.5	296	157.4
Kardgali	657	432.2	906	596.0	842	553.9
Kjustendil	1312	971.9	35	25.9	315	233.4
Lovetch	699	500.7	194	139.0	673	482.1
Montana	241	165.1	380	260.3	403	276.1
Pazardgik	•	•	•	•	•	•
Pernik	1079	817.5	12	9.1	1059	802.4
Pleven	1280	479.6	713	267.2	2082	780.2
Plovdiv	3014	442.7	1297	190.5	4700	690.3
Razgrad	903	730.6	601	486.2	1238	1001.6
Rousse	465	198.9	–	–	162	69.3
Silistra	42	35.5	–	–	–	–
Sliven	549	279.1	597	303.5	1969	1001.0
Smoljan	772	640.9	380	315.5	1026	851.8
Sofia-capital	5330	411.1	774	59.7	2928	225.8
Sofia	733	298.4	390	158.8	1114	453.6
St. Zagora	1316	397.4	527	159.1	1807	545.7
Targovishte	774	645.7	739	616.5	1285	1072.0
Haskovo	490	200.9	452	185.3	1219	499.7
Shoumen	233	129.7	23	12.8	344	191.5
Yambol	450	346.0	388	298.3	1707	1312.5

11. Hospitalized Patients (discharged and deceased) in Hospitals in 2011

<i>Regions</i>	<i>Number</i>	<i>Per 100 000 population</i>
Total	1961177	26688.3
Blagoevgrad	63499	19666.6
Bourgas	82853	19942.6
Varna	112775	23763.4
V. Tarnovo	52035	20203.1
Vidin	15046	14994.4
Vratza	54054	29080.5
Gabrovo	32170	26343.6
Dobrich	27619	14615.2
Kardgali	26782	17565.0
Kjustendil	38258	28142.3
Lovetch	33220	23627.8
Montana	45189	30713.0
Pazardgik	87334	31780.8
Pernik	18374	13832.4
Pleven	78239	29140.1
Plovdiv	278553	40835.9
Razgrad	25293	20320.4
Rousse	55558	23678.9
Silistra	19659	16519.3
Sliven	48588	24641.8
Smoljan	27899	23027.1
Sofia-capital	449579	34738.1
Sofia	72741	29492.7
St. Zagora	83021	24980.7
Targovishte	32241	26773.8
Haskovo	46052	18779.0
Shoumen	29759	16515.5
Yambol	24787	18949.4

12. Primari Disability of Persons in 2011

(number)

<i>Regions</i>	<i>Persons under 16 years age</i>		<i>Persons over 16 years age</i>	
	number	per 1000 persons under 16 years age	number	per 1000 persons over 16 years age
Total	4797	4.6	64370	10.2
Blagoevgrad	126	2.6	2123	7.7
Bourgas	204	3.1	2466	7.0
Varna	253	3.5	3801	9.4
V. Tarnovo	96	3.0	1950	8.7
Vidin	31	2.4	1059	12.1
Vratza	116	4.3	2660	16.7
Gabrovo	67	4.6	1389	12.9
Dobrich	60	2.1	1154	7.2
Kardgali	86	3.8	767	5.9
Kjustendil	84	5.0	1565	13.1
Lovetch	117	5.9	1500	12.4
Montana	33	1.6	1343	10.6
Pazardgik	205	4.8	2460	10.6
Pernik	85	5.2	1460	12.5
Pleven	501	13.5	3191	13.8
Plovdiv	480	4.9	6832	11.7
Razgrad	60	3.2	1350	12.7
Rousse	59	2.0	2045	10.0
Silistra	69	4.1	1747	17.1
Sliven	204	5.6	1597	9.9
Smoljan	44	2.9	871	8.2
Sofia-capital	746	4.4	10272	9.1
Sofia	199	5.6	2510	11.9
St. Zagora	461	9.5	2640	9.3
Targovishte	69	3.8	846	8.3
Haskovo	178	5.1	1753	8.3
Shoumen	89	3.3	1846	12.1
Yambol	75	3.9	1173	10.5

13. Beds in Hospitals on 31.XII.2011

<i>Regions</i>	<i>Number</i>	<i>Per 10000 population</i>
Total¹⁾	44811	61.2
Blagoevgrad	1330	41.3
Bourgas	1612	38.8
Varna	2273	47.9
V. Tarnovo	1323	51.6
Vidin	366	36.8
Vratza	1082	58.6
Gabrovo	851	70.1
Dobrich	787	41.8
Kardgali	918	60.4
Kjustendil	1001	74.2
Lovetch	1130	80.9
Montana	897	61.4
Pazardgik	1896	69.2
Pernik	529	40.1
Pleven	1678	62.9
Plovdiv	4541	66.7
Razgrad	516	41.7
Rousse	1192	51.0
Silistra	436	36.8
Sliven	1014	51.5
Smoljan	707	58.7
Sofia-capital	8876	68.5
Sofia	1581	64.4
St. Zagora	2380	71.9
Targovishte	643	53.6
Haskovo	888	36.4
Shoumen	705	39.2
Yambol	432	33.2

¹⁾ Beds belonging to other administrations are included, but not allocated by regions.

14. Beds¹⁾ in Hospitals and Other Healthcare Establishments on 31.XII.2011 by Type²⁾

Regions	Total	Beds for active and intensive care	Beds for continuing care	Psychiatric beds	Other beds	incl:	
						physiotherapeutic and rehabilitation	day care
Number							
Total	44164	33420	1017	4614	5113	5023	90
Blagoevgrad	1450	1016	20	110	304	304	–
Bourgas	2011	1164	40	268	539	514	25
Varna	2273	1923	2	152	196	190	6
V. Tarnovo	1624	1143	34	225	222	222	–
Vidin	366	336	–	30	–	–	–
Vratza	1312	1009	152	75	76	76	–
Gabrovo	851	636	68	118	29	29	–
Dobrich	867	607	–	170	90	90	–
Kardgali	918	539	59	320	–	–	–
Kjustendil	1001	615	–	30	356	356	–
Lovetch	1130	633	–	475	22	22	–
Montana	897	679	10	43	165	165	–
Pazardgik	1896	1521	100	100	175	175	–
Pernik	529	384	75	25	45	45	–
Pleven	1678	1475	35	107	61	61	–
Plovdiv	5081	3964	64	340	713	713	–
Razgrad	516	446	–	45	25	25	–
Rousse	1514	934	–	465	115	115	–
Silistra	436	411	–	15	10	10	–
Sliven	1024	920	5	20	79	79	–
Smoljan	747	553	3	40	151	151	–
Sofia-capital	8916	7134	158	447	1177	1144	33
Sofia	1641	1249	75	60	257	257	–
St. Zagora	2599	1677	70	568	284	258	26
Targovishte	643	557	10	76	–	–	–
Haskovo	978	868	15	80	15	15	–
Shoumen	834	625	22	180	7	7	–
Yambol	432	402	–	30	–	–	–

¹⁾ Beds belonging to other administrations are not included.

²⁾ According to statistical grouping used by Eurostat.

14. Beds¹⁾ in Hospitals and Other Healthcare Establishments on 31.XII.2011 by Type²⁾

(continued from previous)

Regions	Total	Beds for active and intensive care	Beds for continuing care	Psychiatric beds	Other beds	incl:	
						physiotherapeutic and rehabilitation	day care
Per 10 000 population							
Total	60.3	45.6	1.4	6.3	7.0	6.9	0.1
Blagoevgrad	45.0	31.6	0.6	3.4	9.4	9.4	–
Bourgas	48.5	28.1	1.0	6.4	13.0	12.4	0.6
Varna	47.9	40.6	0.0	3.2	4.1	4.0	0.1
V. Tarnovo	63.4	44.6	1.3	8.8	8.7	8.7	–
Vidin	36.8	33.8	–	3.0	–	–	–
Vratza	71.0	54.6	8.2	4.1	4.1	4.1	–
Gabrovo	70.1	52.4	5.6	9.7	2.4	2.4	–
Dobrich	46.1	32.3	–	9.0	4.8	4.8	–
Kardgali	60.4	35.4	3.9	21.1	–	–	–
Kjustendil	74.2	45.6	–	2.2	26.4	26.4	–
Lovetch	80.9	45.3	–	34.0	1.6	1.6	–
Montana	61.4	46.5	0.7	2.9	11.3	11.3	–
Pazardgik	69.2	55.6	3.6	3.6	6.4	6.4	–
Pernik	40.1	29.1	5.7	1.9	3.4	3.4	–
Pleven	62.9	55.3	1.3	4.0	2.3	2.3	–
Plovdiv	74.6	58.2	0.9	5.0	10.5	10.5	–
Razgrad	41.7	36.1	–	3.6	2.0	2.0	–
Rousse	64.8	40.0	–	19.9	4.9	4.9	–
Silistra	36.8	34.7	–	1.3	0.8	0.8	–
Sliven	52.1	46.8	0.3	1.0	4.0	4.0	–
Smoljan	62.0	46.0	0.2	3.3	12.5	12.5	–
Sofia-capital	68.8	55.1	1.2	3.4	9.1	8.8	0.3
Sofia	66.8	50.8	3.1	2.4	10.5	10.5	–
St. Zagora	78.5	50.6	2.1	17.2	8.6	7.8	0.8
Targovishte	53.6	46.5	0.8	6.3	–	–	–
Haskovo	40.1	35.6	0.6	3.3	0.6	0.6	–
Shoumen	46.4	34.8	1.2	10.0	0.4	0.4	–
Yambol	33.2	30.9	–	2.3	–	–	–

¹⁾ Beds belonging to other administrations are not included.

²⁾ According to statistical grouping used by Eurostat.

15. Medical Personnel in Health Facilities on 31.XII.2011

Regions	Physicians	Dentists	Auxiliary medical personnel	Incl.:		
				Med.assist.	Midwives	Nurses
Number						
Total¹⁾	28411	6655	47427	2439	3270	31609
Blagoevgrad	914	261	1607	105	77	1186
Bourgas	1143	274	2050	143	121	1370
Varna	2135	443	3047	54	305	1918
V. Tarnovo	804	187	1481	123	53	1055
Vidin	345	108	555	90	46	311
Vratza	677	115	1240	102	77	847
Gabrovo	466	107	870	70	39	581
Dobrich	533	121	964	65	65	634
Kardgali	405	117	906	84	74	618
Kjustendil	470	115	762	62	50	517
Lovetch	610	115	905	122	54	588
Montana	476	87	836	118	53	523
Pazardgik	852	230	1318	74	88	906
Pernik	350	154	546	23	32	371
Pleven	1340	167	2120	95	176	1420
Plovdiv	2980	974	4732	61	276	3156
Razgrad	317	65	660	65	33	424
Rousse	742	180	1430	141	103	886
Silistra	312	66	624	64	49	406
Sliven	576	136	996	79	49	664
Smoljan	340	122	752	70	50	506
Sofia-capital	5849	1587	9085	65	829	5795
Sofia	957	126	1549	69	102	1083
St. Zagora	1421	277	2405	118	150	1694
Targovishte	365	64	710	51	47	476
Haskovo	709	200	1237	114	114	816
Shoumen	556	101	1099	90	71	751
Yambol	371	99	768	70	45	508

¹⁾ Personnel belonging to other administrations are included, but not allocated by regions.

15. Medical Personnel in Health Facilities on 31.XII.2011

(continued from previous)

Regions	Physicians	Dentists	Auxiliary medical personnel	Incl.:		
				Med.assist.	Midwives	Nurses
Per 10000 population						
Total¹⁾	38.8	9.1	64.7	3.3	4.5	43.1
Blagoevgrad	28.4	8.1	49.9	3.3	2.4	36.8
Bourgas	27.5	6.6	49.4	3.4	2.9	33.0
Varna	45.0	9.3	64.2	1.1	6.4	40.4
V. Tarnovo	31.4	7.3	57.8	4.8	2.1	41.2
Vidin	34.7	10.9	55.8	9.0	4.6	31.3
Vratza	36.7	6.2	67.1	5.5	4.2	45.9
Gabrovo	38.4	8.8	71.7	5.8	3.2	47.9
Dobrich	28.3	6.4	51.3	3.5	3.5	33.7
Kardgali	26.6	7.7	59.6	5.5	4.9	40.7
Kjustendil	34.8	8.5	56.4	4.6	3.7	38.3
Lovetch	43.7	8.2	64.8	8.7	3.9	42.1
Montana	32.6	6.0	57.3	8.1	3.6	35.8
Pazardgik	31.1	8.4	48.1	2.7	3.2	33.1
Pernik	26.5	11.7	41.4	1.7	2.4	28.1
Pleven	50.2	6.3	79.4	3.6	6.6	53.2
Plovdiv	43.8	14.3	69.5	0.9	4.1	46.4
Razgrad	25.6	5.3	53.4	5.3	2.7	34.3
Rousse	31.7	7.7	61.2	6.0	4.4	37.9
Silistra	26.3	5.6	52.7	5.4	4.1	34.3
Sliven	29.3	6.9	50.6	4.0	2.5	33.8
Smoljan	28.2	10.1	62.4	5.8	4.2	42.0
Sofia-capital	45.1	12.2	70.1	0.5	6.4	44.7
Sofia	39.0	5.1	63.1	2.8	4.2	44.1
St. Zagora	42.9	8.4	72.6	3.6	4.5	51.2
Targovishte	30.5	5.3	59.2	4.3	3.9	39.7
Haskovo	29.1	8.2	50.7	4.7	4.7	33.4
Shoumen	30.9	5.6	61.2	5.0	4.0	41.8
Yambol	28.5	7.6	59.1	5.4	3.5	39.1

¹⁾ Personnel belonging to other administrations are included, but not allocated by regions.

16. Persons Served¹⁾ by the Centers for Urgent Medical Care, Urgent Wards and Urgent Portals in 2011

(number)

Regions	Total	Centers for urgent medical care		Urgent wards
		Total	incl.: at calls performed	
Total	2496265	1279529	690363	1179226
Blagoevgrad	90243	70313	24485	19930
Bourgas	107691	69246	37729	38445
Varna	135627	58474	40725	77153
V. Tarnovo	79464	58196	21356	21268
Vidin	45232	19318	11172	25914
Vratza	57547	32786	17277	24761
Gabrovo	38144	23197	10933	14947
Dobrich	79817	33494	15022	46323
Kardgali	65695	37656	11694	28039
Kjustendil	65586	50118	23307	15468
Lovetch	54529	40840	15454	13689
Montana	51645	31146	13244	20499
Pazardgik	80281	55583	28720	24698
Pernik	61860	34247	22663	27613
Pleven	75017	49314	23195	25703
Plovdiv	223995	65715	48181	158280
Razgrad	36183	19087	9491	17096
Rousse	56802	29555	19986	27247
Silistra	39304	24933	10377	14371
Sliven	43839	26679	18552	17160
Smoljan	39056	27581	21953	11475
Sofia-capital	530149	116477	112604	376162
Sofia	110637	83089	19343	27548
St. Zagora	91845	64336	32994	27509
Targovishte	38279	17675	8837	20604
Haskovo	81744	66037	26446	15707
Shoumen	62644	39118	20413	23526
Yambol	53410	35319	24210	18091

¹⁾ excl. ambulance transportation

17. Childbirth care at inpatient healthcare facilities during 2011

Regions	Women in childbirth served	Newborns live births			
		number	per 100 live births	incl. premature	
				number	per 100 deaths
Total	64601	305	0.5	232	76.1
Blagoevgrad	2298	3	0.1	–	–
Burgas	3312	24	0.7	19	79.2
Varna	4958	30	0.6	27	90.0
V. Tarnovo	1402	7	0.5	5	71.4
Vidin	619	5	0.8	5	100.0
Vratza	1181	2	0.2	–	–
Gabrovo	764	2	0.3	2	100.0
Dobrich	1504	8	0.5	7	87.5
Kardgali	1196	6	0.5	4	66.7
Kjustendil	1025	1	0.1	1	100.0
Lovetch	987	–	–	–	–
Montana	1183	4	0.3	3	75.0
Pazardgik	2495	21	0.8	15	71.4
Pernik	660	–	–	–	–
Pleven	2647	15	0.6	12	80.0
Plovdiv	7168	53	0.7	35	66.0
Razgrad	665	1	0.2	–	–
Rousse	1648	11	0.7	6	54.5
Silistra	1126	7	0.6	3	42.9
Sliven	3168	10	0.3	10	100.0
Smoljan	685	5	0.7	3	60.0
Sofia-capital	13672	40	0.3	38	95.0
Sofia	2063	2	0.1	1	50.0
St. Zagora	3051	16	0.5	13	81.3
Targovishte	1097	3	0.3	2	66.7
Haskovo	1776	11	0.6	8	72.7
Shoumen	1470	17	1.2	13	76.5
Yambol	781	1	0.1	–	–

18. Surgical Patients, Discharged from Hospitals in 2011

<i>Regions</i>	<i>Discharged surgical patients</i>	<i>Surgical patients with complications (percentage)</i>	<i>Lethality (percentage)</i>
Total	520466	0.5	0.7
Blagoevgrad	14636	0.2	0.5
Burgas	17124	0.2	0.5
Varna	33549	0.1	1.0
V. Tarnovo	9889	0.8	1.1
Vidin	3070	0.1	1.3
Vratza	11794	0.2	0.8
Gabrovo	8490	0.4	0.8
Dobrich	6166	0.3	1.0
Kardgali	6131	0.2	0.6
Kjustendil	6067	1.2	0.4
Lovetch	7280	0.5	0.6
Montana	9536	0.9	1.1
Pazardgik	20995	0.0	0.3
Pernik	4173	0.1	1.1
Pleven	20598	0.1	0.4
Plovdiv	78104	0.3	0.5
Razgrad	5676	0.0	0.5
Rousse	14938	2.5	0.9
Silistra	5147	0.7	0.7
Sliven	12792	0.0	0.4
Smoljan	5159	0.3	0.2
Sofia-capital	145572	0.5	0.8
Sofia	17572	1.5	1.1
St. Zagora	23157	0.3	0.7
Targovishte	8241	1.0	0.4
Haskovo	11120	0.1	0.4
Shoumen	8202	0.6	0.6
Yambol	5288	0.4	0.8

VIII. INTERNATIONAL REVIEW

1. Birth Rate, Death Rate and Natural Growth

(per 1000 population)

Countries	Year	Birth rate	Death rate	Natural growth	Countries	Year	Birth rate	Death rate	Natural growth
Austria	1980	12.1	12.3	-0.2	Norway	1980	12.5	10.1	2.4
	1990	11.7	10.7	1.0		1990	14.4	10.9	3.5
	2000	9.7	9.5	0.2		2000	13.3	9.9	3.4
	2007	9.2	9.0	0.2		2007	12.4	8.9	3.5
	2008	9.3	9.0	0.3		2008	12.7	8.8	3.9
	2009	9.1	9.3	-0.1		2009	12.8	8.6	4.2
	2010	9.4	9.2	0.2		2010	12.6	8.5	4.1
Belgium	1980	12.7	11.6	1.1	Poland	1980	19.6	9.8	9.7
	1990	12.4	10.5	2.0		1990	14.4	10.2	4.2
	2000	11.2		2000	9.9	9.6	0.3
	2007	11.4		2007	10.2	9.9	0.3
	2008		2008	10.9	10.0	0.9
	2009	11.8		2009	11.0	10.1	0.9
Bulgaria	2010	2010	
	1980	14.5	11.1	3.4	Germany	1980
	1990	11.7	12.1	-0.4		1990	11.4	11.6	-0.2
	2000	9.0	14.1	-5.1		2000	9.3	10.2	-0.9
	2007	9.8	14.8	-4.9		2007	8.3	10.1	-1.7
	2008	10.2	14.5	-4.3		2008	8.3	10.3	-2.0
2009	10.7	14.3	-3.6	2009		8.1	10.4	-2.3	
United Kingdom	2010	10.0	14.6	-4.6	2010	8.3	10.5	-2.2	
	1980	13.4	11.7	1.6	Switzerland	1980	11.7	9.4	2.3
	1990	14.0	11.2	2.7		1990	12.5	9.5	3.0
	2000	11.4	10.3	1.2		2000	10.9	8.7	2.2
	2007	12.7	9.4	3.2		2007	9.9	8.1	1.8
	2008	12.9	9.4	3.5		2008	10.2
2009	12.8	9.1	3.7	2009		
Netherlands	2010	2010	
	1980	12.8	8.1	4.7	Roumania	1980	18.0	10.4	7.5
	1990	13.2	8.6	4.6		1990	13.6	10.7	2.9
	2000	13.0	8.8	4.2		2000	10.5	11.4	-1.0
	2007	11.1	8.1	3.0		2007	10.0	11.7	-1.7
	2008	11.2	8.2	3.0		2008	10.3	11.8	-1.5
2009	11.2	8.1	3.1	2009		10.4	12.0	-1.6	
2010	11.1	8.2	2.9	2010	9.9	12.1	-2.2		

2. Infant Mortality Rate

(per 1000 live births)

<i>Countries</i>	1980	1985	1990	1995	2000	2006	2007	2008	2009	2010
Austria	14.3	11.2	7.8	5.4	4.8	3.6	3.7	3.7	3.8	3.9
Belgium	12.1	9.8	8.0	6.0	...	4.1
Bulgaria	20.2	15.2	14.8	14.8	13.3	9.7	9.2	8.6	9.0	9.4
United Kingdom	12.1	9.4	7.9	6.2	5.6	5.0	4.8	4.7	4.7	...
Germany	7.1	5.3	4.4	3.8	3.9	3.5	3.5	3.4
Greece	17.9	14.1	9.7	8.2	5.4	3.7	3.6	2.7	3.2	...
Spain	12.4	8.9	7.6	5.5	4.4	3.5	3.5	3.4	3.3	...
Italy	14.2	10.3	8.0	6.2	4.5	3.7	3.5	3.5
Norway	8.1	8.5	7.0	4.1	3.8	3.2	3.2	2.7	3.2	2.6
Poland	21.2	18.4	16.0	13.6	8.1	6.0	6.0	5.6	5.6	...
Portugal	24.3	17.8	11.0	7.5	5.5	...	3.5	3.3	3.7	...
Roumania	29.3	25.6	26.9	21.2	18.6	13.9	12.0	11.0	10.1	9.8
Russia	22.0	20.8	17.6	18.2	15.2	10.2	9.2	8.4	8.1	...
Hungary	23.2	20.4	14.8	10.7	9.2	5.7	5.9	5.6	5.1	...
France	10.0	8.3	7.3	4.9	4.4	3.6	3.5	3.5
Czech republic	16.9	12.5	10.8	7.7	4.1	3.3	3.1	2.8	2.9	2.7
Switzerland	9.1	6.9	6.8	5.0	4.9	4.4	3.9

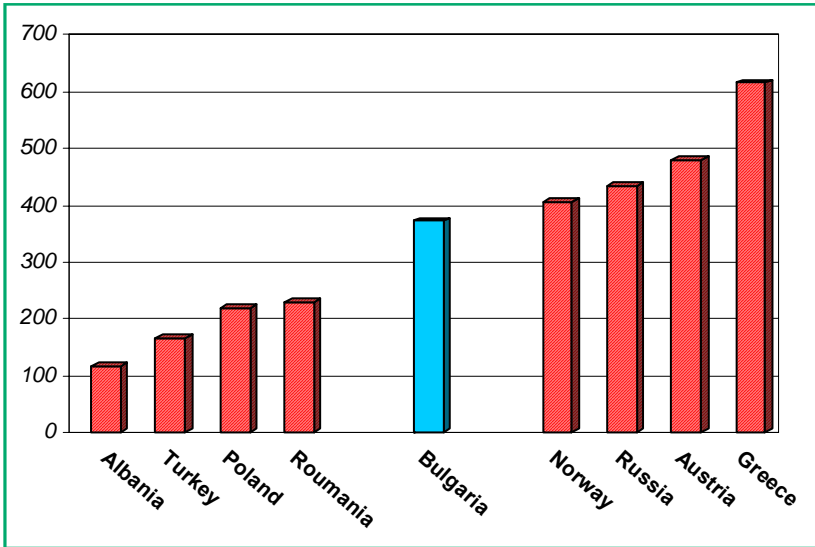
3. Medical Personnel and Hospital Beds

(per 100 000 population)

<i>Countries</i>	<i>Year</i>	<i>Physicians</i>	<i>Year</i>	<i>Dentists</i>	<i>Year</i>	<i>Beds</i>
Albania	2009	115.4	2006	32.9	2009	275.6
Austria	2010	477.2	2010	55.9	2009	766.1
Belgium	2009	292.5	2009	70.9	2010	654.7
Bulgaria	2009	369.0	2009	85.6	2009	659.7
Czech republic	2009	356.0	2009	67.6	2009	711.1
Denmark	2008	343.0	2008	80.4	2009	349.6
Finland	2008	272.1	2008	75.4	2009	621.6
France	2010	337.9	2010	66.7	2009	685.7
Germany	2009	363.8	2009	78.5	2009	824.2
Greece	2009	611.8	2009	130.9	2009	484.9
Hungary	2009	302.1	2009	49.1	2009	714.4
Ireland	2010	313.9	2010	60.9	2008	492.7
Israel	2010	350.2	2010	84.0	2010	343.5
Italy	2009	337.0	2009	51.6	2009	363.4
Luxembourg	2009	271.2	2009	81.2	2009	546.6
Netherlands	2008	286.6	2008	51.2	2009	465.7
Norway	2009	402.3	2009	86.7	2009	334.5
Poland	2009	217.1	2009	31.9	2009	665.3
Portugal	2010	389.5	2009	72.0	2009	334.8
Roumania	2009	225.8	2009	58.0	2009	662.3
Russia	2006	431.0	2006	32.0	2006	965.9
Spain	2010	377.9	2009	58.2	2009	318.6
Sweden	2008	372.9	2008	80.8	2009	275.9
Switzerland	2009	392.2	2009	53.3	2009	522.3
Turkey	2009	163.5	2009	28.4	2009	247.6
United Kingdom	2009	266.9	2009	51.1	2009	329.1
European Union	2009	330.3	2009	66.2	2009	528.6

Number of Physicians

(per 100 000 population)



Number of Hospital Beds

(per 100 000 population)

